



SPEC[®] CFP2006 Result

Copyright 2006-2014 Standard Performance Evaluation Corporation

NEC Corporation

Express5800/120Rj-2
(Intel Xeon E5440)

SPECfp[®]2006 = 21.6

SPECfp_base2006 = 18.2

CPU2006 license: 9006

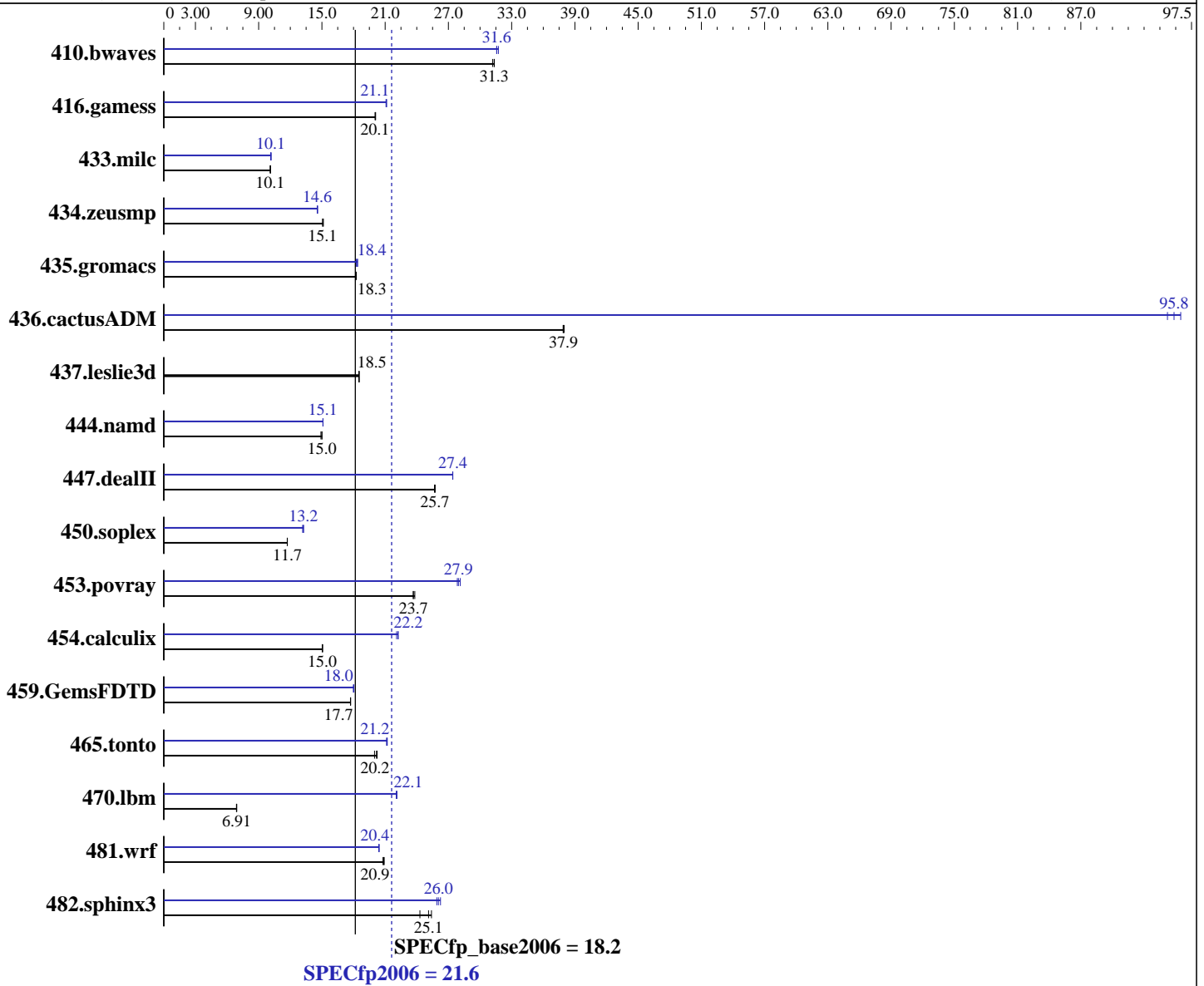
Test sponsor: NEC Corporation

Tested by: NEC Corporation

Test date: Apr-2008

Hardware Availability: Dec-2007

Software Availability: Nov-2007



Hardware

CPU Name: Intel Xeon E5440
 CPU Characteristics: 2.83 GHz, 2x6 MB L2 shared, 1333 MHz bus
 CPU MHz: 2833
 FPU: Integrated
 CPU(s) enabled: 8 cores, 2 chips, 4 cores/chip
 CPU(s) orderable: 1,2 chips
 Primary Cache: 32 KB I + 32 KB D on chip per core
 Secondary Cache: 12 MB I+D on chip per chip, 6 MB shared / 2 cores

Continued on next page

Software

Operating System: SUSE Linux Enterprise Server 10 (x86_64) SP1, Kernel 2.6.16.46-0.12-smpp
 Compiler: Intel C++ and Fortran Compiler for Linux32 and Linux64 version 10.1 Build 20070913 Package ID: l_cc_p_10.1.008, l_fc_p_10.1.008
 Auto Parallel: Yes
 File System: ext2

Continued on next page



SPEC CFP2006 Result

Copyright 2006-2014 Standard Performance Evaluation Corporation

NEC Corporation

Express5800/120Rj-2
(Intel Xeon E5440)

SPECfp2006 = **21.6**

SPECfp_base2006 = **18.2**

CPU2006 license: 9006
Test sponsor: NEC Corporation
Tested by: NEC Corporation

Test date: Apr-2008
Hardware Availability: Dec-2007
Software Availability: Nov-2007

L3 Cache: None
Other Cache: None
Memory: 12 GB (12x1 GB PC2-5300F, 2 rank, CL5-5-5, ECC)
Disk Subsystem: 1x73.2 GB SAS, 15000RPM
Other Hardware: None

System State: Run level 3 (multi-user)
Base Pointers: 64-bit
Peak Pointers: 32/64-bit
Other Software: binutils-2.17.tar.gz, Version 2.17

Results Table

Benchmark	Base						Peak					
	Seconds	Ratio	Seconds	Ratio	Seconds	Ratio	Seconds	Ratio	Seconds	Ratio	Seconds	Ratio
410.bwaves	433	31.4	434	31.3	436	31.2	428	31.7	430	31.6	430	31.6
416.gamess	977	20.0	976	20.1	974	20.1	927	21.1	927	21.1	929	21.1
433.milc	909	10.1	906	10.1	909	10.1	901	10.2	905	10.1	906	10.1
434.zeusmp	604	15.1	601	15.1	604	15.1	624	14.6	625	14.6	625	14.6
435.gromacs	391	18.3	391	18.3	391	18.2	391	18.3	389	18.4	388	18.4
436.cactusADM	315	38.0	315	37.9	315	37.9	125	95.8	124	96.5	126	95.2
437.leslie3d	508	18.5	507	18.5	508	18.5	508	18.5	507	18.5	508	18.5
444.namd	538	14.9	535	15.0	535	15.0	531	15.1	531	15.1	531	15.1
447.dealII	445	25.7	445	25.7	445	25.7	417	27.4	417	27.4	417	27.4
450.soplex	712	11.7	712	11.7	712	11.7	633	13.2	629	13.3	630	13.2
453.povray	225	23.7	225	23.7	223	23.8	189	28.1	191	27.8	190	27.9
454.calculix	548	15.0	548	15.1	548	15.0	374	22.1	371	22.2	371	22.2
459.GemsFDTD	599	17.7	599	17.7	599	17.7	590	18.0	588	18.0	589	18.0
465.tonto	492	20.0	486	20.2	488	20.2	464	21.2	465	21.2	466	21.1
470.lbm	1988	6.91	1994	6.89	1987	6.92	621	22.1	622	22.1	623	22.1
481.wrf	534	20.9	537	20.8	536	20.9	547	20.4	547	20.4	547	20.4
482.sphinx3	802	24.3	776	25.1	767	25.4	742	26.2	748	26.0	753	25.9

Results appear in the order in which they were run. Bold underlined text indicates a median measurement.

Compiler Invocation Notes

OMP_NUM_THREADS set to number of cores

Operating System Notes

'ulimit -s unlimited' was used to set the stacksize to unlimited prior to run

Platform Notes

Bios settings:
Intel SpeedStep Technology: Disabled



SPEC CFP2006 Result

Copyright 2006-2014 Standard Performance Evaluation Corporation

NEC Corporation

Express5800/120Rj-2
(Intel Xeon E5440)

SPECfp2006 = 21.6

SPECfp_base2006 = 18.2

CPU2006 license: 9006

Test sponsor: NEC Corporation

Tested by: NEC Corporation

Test date: Apr-2008

Hardware Availability: Dec-2007

Software Availability: Nov-2007

General Notes

All benchmarks compiled in 64-bit mode except 450.soplex, 470.lbm and 482.sphinx3, for peak, are compiled in 32-bit mode

The NEC Express5800/120Rh-1(Intel Xeon E5440) and the NEC Express5800/120Rj-2(Intel Xeon E5440) models are electronically equivalent. The results have been measured on a NEC Express5800/120Rj-2(Intel Xeon E5440) model.

Base Compiler Invocation

C benchmarks:

icc

C++ benchmarks:

icpc

Fortran benchmarks:

ifort

Benchmarks using both Fortran and C:

icc ifort

Base Portability Flags

410.bwaves: -DSPEC_CPU_LP64
 416.gamess: -DSPEC_CPU_LP64
 433.milc: -DSPEC_CPU_LP64
 434.zeusmp: -DSPEC_CPU_LP64
 435.gromacs: -DSPEC_CPU_LP64 -nofor_main
 436.cactusADM: -DSPEC_CPU_LP64 -nofor_main
 437.leslie3d: -DSPEC_CPU_LP64
 444.namd: -DSPEC_CPU_LP64
 447.dealII: -DSPEC_CPU_LP64
 450.soplex: -DSPEC_CPU_LP64
 453.povray: -DSPEC_CPU_LP64
 454.calculix: -DSPEC_CPU_LP64 -nofor_main
 459.GemsFDTD: -DSPEC_CPU_LP64
 465.tonto: -DSPEC_CPU_LP64
 470.lbm: -DSPEC_CPU_LP64
 481.wrf: -DSPEC_CPU_LP64 -DSPEC_CPU_CASE_FLAG -DSPEC_CPU_LINUX
 482.sphinx3: -DSPEC_CPU_LP64

Base Optimization Flags

C benchmarks:

-fast -parallel

Continued on next page



SPEC CFP2006 Result

Copyright 2006-2014 Standard Performance Evaluation Corporation

NEC Corporation

Express5800/120Rj-2
(Intel Xeon E5440)

SPECfp2006 = 21.6

SPECfp_base2006 = 18.2

CPU2006 license: 9006
Test sponsor: NEC Corporation
Tested by: NEC Corporation

Test date: Apr-2008
Hardware Availability: Dec-2007
Software Availability: Nov-2007

Base Optimization Flags (Continued)

C++ benchmarks:
-fast -parallel

Fortran benchmarks:
-fast -parallel

Benchmarks using both Fortran and C:
-fast -parallel

Peak Compiler Invocation

C benchmarks (except as noted below):
/opt/intel/cc/10.1.008/bin/icc -L/opt/intel/cc/10.1.008/lib
-I/opt/intel/cc/10.1.008/include

433.milc: icc

C++ benchmarks (except as noted below):
icpc

450.soplex: /opt/intel/cc/10.1.008/bin/icpc -L/opt/intel/cc/10.1.008/lib
-I/opt/intel/cc/10.1.008/include

Fortran benchmarks:
ifort

Benchmarks using both Fortran and C:
icc ifort

Peak Portability Flags

410.bwaves: -DSPEC_CPU_LP64
416.gamess: -DSPEC_CPU_LP64
433.milc: -DSPEC_CPU_LP64
434.zeusmp: -DSPEC_CPU_LP64
435.gromacs: -DSPEC_CPU_LP64 -nofor_main
436.cactusADM: -DSPEC_CPU_LP64 -nofor_main
437.leslie3d: -DSPEC_CPU_LP64
444.namd: -DSPEC_CPU_LP64
447.dealII: -DSPEC_CPU_LP64
453.povray: -DSPEC_CPU_LP64
454.calculix: -DSPEC_CPU_LP64 -nofor_main
459.GemsFDTD: -DSPEC_CPU_LP64
465.tonto: -DSPEC_CPU_LP64
481.wrf: -DSPEC_CPU_LP64 -DSPEC_CPU_CASE_FLAG -DSPEC_CPU_LINUX



SPEC CFP2006 Result

Copyright 2006-2014 Standard Performance Evaluation Corporation

NEC Corporation

Express5800/120Rj-2
(Intel Xeon E5440)

SPECfp2006 = 21.6

SPECfp_base2006 = 18.2

CPU2006 license: 9006

Test sponsor: NEC Corporation

Tested by: NEC Corporation

Test date: Apr-2008

Hardware Availability: Dec-2007

Software Availability: Nov-2007

Peak Optimization Flags

C benchmarks:

433.milc: -prof-gen(pass 1) -prof-use(pass 2) -fast -fno-alias
-auto-ilp32

470.lbm: -prof-gen(pass 1) -prof-use(pass 2) -fast -unroll2
-scalar-rep- -prefetch -opt-malloc-options=3

482.sphinx3: -fast -unroll2

C++ benchmarks:

444.namd: -prof-gen(pass 1) -prof-use(pass 2) -fast -fno-alias
-auto-ilp32

447.dealII: -prof-gen(pass 1) -prof-use(pass 2) -fast -unroll2
-ansi-alias -scalar-rep-

450.soplex: -prof-gen(pass 1) -prof-use(pass 2) -fast
-opt-malloc-options=3

453.povray: -prof-gen(pass 1) -prof-use(pass 2) -fast -unroll4
-ansi-alias

Fortran benchmarks:

410.bwaves: -fast -prefetch -parallel

416.gamess: -prof-gen(pass 1) -prof-use(pass 2) -fast -unroll2 -Ob0
-ansi-alias -scalar-rep-

434.zeusmp: -prof-gen(pass 1) -prof-use(pass 2) -fast

437.leslie3d: basepeak = yes

459.GemsFDTD: -prof-gen(pass 1) -prof-use(pass 2) -fast -unroll2 -Ob0
-prefetch -parallel

465.tonto: -prof-gen(pass 1) -prof-use(pass 2) -fast -unroll4 -auto

Benchmarks using both Fortran and C:

435.gromacs: -prof-gen(pass 1) -prof-use(pass 2) -fast -prefetch
-auto-ilp32

436.cactusADM: -prof-gen(pass 1) -prof-use(pass 2) -fast -unroll2
-prefetch -parallel -auto-ilp32

454.calculix: -fast -unroll-aggressive -auto-ilp32

Continued on next page



SPEC CFP2006 Result

Copyright 2006-2014 Standard Performance Evaluation Corporation

NEC Corporation

Express5800/120Rj-2
(Intel Xeon E5440)

SPECfp2006 = 21.6

SPECfp_base2006 = 18.2

CPU2006 license: 9006
Test sponsor: NEC Corporation
Tested by: NEC Corporation

Test date: Apr-2008
Hardware Availability: Dec-2007
Software Availability: Nov-2007

Peak Optimization Flags (Continued)

481.wrf: -fast -parallel -prefetch -auto-ilp32

The flags file that was used to format this result can be browsed at

<http://www.spec.org/cpu2006/flags/NEC-Intel-ic10.1-FP-intel64-linux-flags.20090714.html>

You can also download the XML flags source by saving the following link:

<http://www.spec.org/cpu2006/flags/NEC-Intel-ic10.1-FP-intel64-linux-flags.20090714.xml>

SPEC and SPECfp are registered trademarks of the Standard Performance Evaluation Corporation. All other brand and product names appearing in this result are trademarks or registered trademarks of their respective holders.

For questions about this result, please contact the tester.
For other inquiries, please contact webmaster@spec.org.

Tested with SPEC CPU2006 v1.0.
Report generated on Tue Jul 22 17:19:12 2014 by SPEC CPU2006 PS/PDF formatter v6932.
Originally published on 13 May 2008.