



SPEC[®] CINT2006 Result

Copyright 2006-2015 Standard Performance Evaluation Corporation

Lenovo Group Limited

SPECint[®]2006 = 61.5

Lenovo NeXtScale nx360 M5
(Intel Xeon E5-2695 v3, 2.30 GHz)

SPECint_base2006 = 59.2

CPU2006 license: 9017

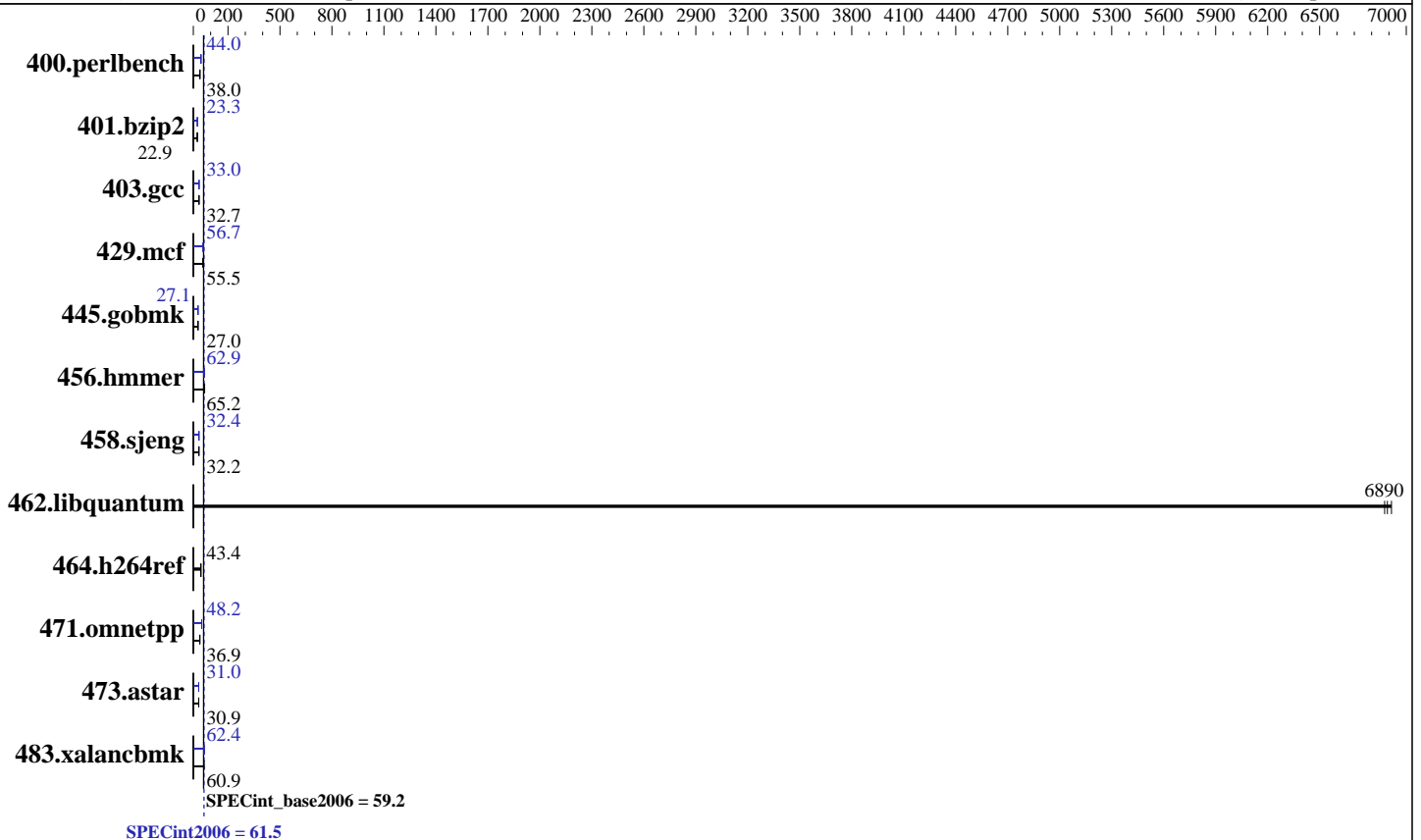
Test date: Jul-2015

Test sponsor: Lenovo Group Limited

Hardware Availability: Nov-2014

Tested by: Lenovo Group Limited

Software Availability: Sep-2014



Hardware

CPU Name: Intel Xeon E5-2695 v3
 CPU Characteristics: Intel Turbo Boost Technology up to 3.30 GHz
 CPU MHz: 2300
 FPU: Integrated
 CPU(s) enabled: 28 cores, 2 chips, 14 cores/chip
 CPU(s) orderable: 1,2 chips
 Primary Cache: 32 KB I + 32 KB D on chip per core
 Secondary Cache: 256 KB I+D on chip per core
 L3 Cache: 35 MB I+D on chip per chip
 Other Cache: None
 Memory: 256 GB (16 x 16 GB 2Rx4 PC4-2133P-R)
 Disk Subsystem: 1 x 1000 GB SATA, 7200 RPM
 Other Hardware: None

Software

Operating System: Red Hat Enterprise Linux Server release 7.0 (Maipo)
 3.10.0-123.el7.x86_64
 Compiler: C/C++: Version 15.0.0.090 of Intel C++ Studio XE for Linux
 Auto Parallel: Yes
 File System: xfs
 System State: Run level 3 (multi-user)
 Base Pointers: 32/64-bit
 Peak Pointers: 32/64-bit
 Other Software: Microquill SmartHeap V10.0



SPEC CINT2006 Result

Copyright 2006-2015 Standard Performance Evaluation Corporation

Lenovo Group Limited

SPECint2006 = **61.5**

Lenovo NeXtScale nx360 M5
(Intel Xeon E5-2695 v3, 2.30 GHz)

SPECint_base2006 = **59.2**

CPU2006 license: 9017

Test date: Jul-2015

Test sponsor: Lenovo Group Limited

Hardware Availability: Nov-2014

Tested by: Lenovo Group Limited

Software Availability: Sep-2014

Results Table

Benchmark	Base						Peak					
	Seconds	Ratio	Seconds	Ratio	Seconds	Ratio	Seconds	Ratio	Seconds	Ratio	Seconds	Ratio
400.perlbench	257	38.1	<u>257</u>	<u>38.0</u>	258	37.9	222	44.0	222	44.0	<u>222</u>	<u>44.0</u>
401.bzip2	420	23.0	<u>421</u>	<u>22.9</u>	422	22.9	415	23.3	414	23.3	<u>415</u>	<u>23.3</u>
403.gcc	<u>246</u>	<u>32.7</u>	246	32.7	246	32.7	242	33.2	<u>244</u>	<u>33.0</u>	244	32.9
429.mcf	163	55.9	<u>164</u>	<u>55.5</u>	164	55.5	<u>161</u>	<u>56.7</u>	161	56.8	163	56.0
445.gobmk	389	27.0	<u>389</u>	<u>27.0</u>	387	27.1	<u>387</u>	<u>27.1</u>	387	27.1	388	27.1
456.hammer	<u>143</u>	<u>65.2</u>	144	64.6	143	65.3	149	62.8	148	62.9	<u>148</u>	<u>62.9</u>
458.sjeng	<u>375</u>	<u>32.2</u>	375	32.3	376	32.2	373	32.4	374	32.4	<u>374</u>	<u>32.4</u>
462.libquantum	3.01	6880	<u>3.01</u>	<u>6890</u>	3.00	6910	3.01	6880	<u>3.01</u>	<u>6890</u>	3.00	6910
464.h264ref	510	43.4	<u>510</u>	<u>43.4</u>	507	43.7	510	43.4	<u>510</u>	<u>43.4</u>	507	43.7
471.omnetpp	162	38.7	<u>170</u>	<u>36.9</u>	170	36.7	129	48.4	<u>130</u>	<u>48.2</u>	130	48.1
473.astar	223	31.5	227	30.9	<u>227</u>	<u>30.9</u>	<u>226</u>	<u>31.0</u>	226	31.1	226	31.0
483.xalancbmk	<u>113</u>	<u>60.9</u>	113	61.0	113	60.9	111	62.4	<u>110</u>	<u>62.4</u>	110	62.5

Results appear in the order in which they were run. Bold underlined text indicates a median measurement.

Submit Notes

The config file option 'submit' was used.

Operating System Notes

Stack size set to unlimited using "ulimit -s unlimited"

Platform Notes

BIOS setting:

Operating Mode set to "Efficiency-Favor Performance"

Sysinfo program /home/SPEC/config/sysinfo.rev6914

\$Rev: 6914 \$ \$Date:: 2014-06-25 #\$ e3fbb8667b5a285932ceab81e28219e1

running on wilykat-2.labs.lenovo.com Fri Jul 24 09:39:39 2015

This section contains SUT (System Under Test) info as seen by some common utilities. To remove or add to this section, see:

<http://www.spec.org/cpu2006/Docs/config.html#sysinfo>

From /proc/cpuinfo

model name : Intel(R) Xeon(R) CPU E5-2695 v3 @ 2.30GHz

2 "physical id"s (chips)

28 "processors"

cores, siblings (Caution: counting these is hw and system dependent. The following excerpts from /proc/cpuinfo might not be reliable. Use with caution.)

cpu cores : 14

siblings : 14

Continued on next page

Standard Performance Evaluation Corporation

info@spec.org

<http://www.spec.org/>

Page 2



SPEC CINT2006 Result

Copyright 2006-2015 Standard Performance Evaluation Corporation

Lenovo Group Limited

SPECint2006 = 61.5

Lenovo NeXtScale nx360 M5
(Intel Xeon E5-2695 v3, 2.30 GHz)

SPECint_base2006 = 59.2

CPU2006 license: 9017

Test date: Jul-2015

Test sponsor: Lenovo Group Limited

Hardware Availability: Nov-2014

Tested by: Lenovo Group Limited

Software Availability: Sep-2014

Platform Notes (Continued)

```
physical 0: cores 0 1 2 3 4 5 6 8 9 10 11 12 13 14
physical 1: cores 0 1 2 3 4 5 6 8 9 10 11 12 13 14
cache size : 35840 KB
```

```
From /proc/meminfo
MemTotal:          263586436 kB
HugePages_Total:   0
Hugepagesize:      2048 kB
```

```
From /etc/*release* /etc/*version*
os-release:
NAME="Red Hat Enterprise Linux Server"
VERSION="7.0 (Maipo)"
ID="rhel"
ID_LIKE="fedora"
VERSION_ID="7.0"
PRETTY_NAME="Red Hat Enterprise Linux Server 7.0 (Maipo)"
ANSI_COLOR="0;31"
CPE_NAME="cpe:/o:redhat:enterprise_linux:7.0:GA:server"
redhat-release: Red Hat Enterprise Linux Server release 7.0 (Maipo)
system-release: Red Hat Enterprise Linux Server release 7.0 (Maipo)
system-release-cpe: cpe:/o:redhat:enterprise_linux:7.0:ga:server
```

```
uname -a:
Linux wilykat-2.labs.lenovo.com 3.10.0-123.el7.x86_64 #1 SMP Mon May 5
11:16:57 EDT 2014 x86_64 x86_64 x86_64 GNU/Linux
```

```
SPEC is set to: /home/SPEC
Filesystem      Type  Size  Used Avail Use% Mounted on
/dev/mapper/rhel-root xfs  927G  47G  881G   5% /
```

Additional information from dmidecode:

Warning: Use caution when you interpret this section. The 'dmidecode' program reads system data which is "intended to allow hardware to be accurately determined", but the intent may not be met, as there are frequent changes to hardware, firmware, and the "DMTF SMBIOS" standard.

```
BIOS IBM -[THE106CUS-1.11]- 02/16/2015
Memory:
10x Hynix HMA42GR7MFR4N-TF 16 GB 2 rank 2133 MHz
6x Hynix HMA42GR7MFR4N-TFT1 16 GB 2 rank 2133 MHz
```

(End of data from sysinfo program)

General Notes

```
Environment variables set by runspec before the start of the run:
KMP_AFFINITY = "granularity=fine,scatter"
LD_LIBRARY_PATH = "/home/SPEC/libs/32:/home/SPEC/libs/64:/home/SPEC/sh"
OMP_NUM_THREADS = "28"
```

Continued on next page



SPEC CINT2006 Result

Copyright 2006-2015 Standard Performance Evaluation Corporation

Lenovo Group Limited

SPECint2006 = 61.5

Lenovo NeXtScale nx360 M5
(Intel Xeon E5-2695 v3, 2.30 GHz)

SPECint_base2006 = 59.2

CPU2006 license: 9017

Test date: Jul-2015

Test sponsor: Lenovo Group Limited

Hardware Availability: Nov-2014

Tested by: Lenovo Group Limited

Software Availability: Sep-2014

General Notes (Continued)

Binaries compiled on a system with 1x Core i5-4670K CPU + 16GB memory using RedHat EL 7.0
Transparent Huge Pages enabled with:
echo always > /sys/kernel/mm/transparent_hugepage/enabled

Base Compiler Invocation

C benchmarks:
icc -m64

C++ benchmarks:
icpc -m64

Base Portability Flags

400.perlbench: -DSPEC_CPU_LP64 -DSPEC_CPU_LINUX_X64
401.bzip2: -DSPEC_CPU_LP64
403.gcc: -DSPEC_CPU_LP64
429.mcf: -DSPEC_CPU_LP64
445.gobmk: -DSPEC_CPU_LP64
456.hmmr: -DSPEC_CPU_LP64
458.sjeng: -DSPEC_CPU_LP64
462.libquantum: -DSPEC_CPU_LP64 -DSPEC_CPU_LINUX
464.h264ref: -DSPEC_CPU_LP64
471.omnetpp: -DSPEC_CPU_LP64
473.astar: -DSPEC_CPU_LP64
483.xalancbmk: -DSPEC_CPU_LP64 -DSPEC_CPU_LINUX

Base Optimization Flags

C benchmarks:
-xCORE-AVX2 -ipo -O3 -no-prec-div -parallel -opt-prefetch -auto-p32

C++ benchmarks:
-xCORE-AVX2 -ipo -O3 -no-prec-div -opt-prefetch -auto-p32
-Wl,-z,muldefs -L/sh -lsmartheap64

Base Other Flags

C benchmarks:
403.gcc: -Dalloca=_alloca



SPEC CINT2006 Result

Copyright 2006-2015 Standard Performance Evaluation Corporation

Lenovo Group Limited

SPECint2006 = 61.5

Lenovo NeXtScale nx360 M5
(Intel Xeon E5-2695 v3, 2.30 GHz)

SPECint_base2006 = 59.2

CPU2006 license: 9017

Test date: Jul-2015

Test sponsor: Lenovo Group Limited

Hardware Availability: Nov-2014

Tested by: Lenovo Group Limited

Software Availability: Sep-2014

Peak Compiler Invocation

C benchmarks (except as noted below):

icc -m64

400.perlbench: icc -m32 -L/opt/intel/composer_xe_2015/lib/ia32

445.gobmk: icc -m32 -L/opt/intel/composer_xe_2015/lib/ia32

C++ benchmarks (except as noted below):

icpc -m32 -L/opt/intel/composer_xe_2015/lib/ia32

473.astar: icpc -m64

Peak Portability Flags

400.perlbench: -DSPEC_CPU_LINUX_IA32

401.bzip2: -DSPEC_CPU_LP64

403.gcc: -DSPEC_CPU_LP64

429.mcf: -DSPEC_CPU_LP64

456.hmmer: -DSPEC_CPU_LP64

458.sjeng: -DSPEC_CPU_LP64

462.libquantum: -DSPEC_CPU_LP64 -DSPEC_CPU_LINUX

464.h264ref: -DSPEC_CPU_LP64

473.astar: -DSPEC_CPU_LP64

483.xalancbmk: -DSPEC_CPU_LINUX

Peak Optimization Flags

C benchmarks:

400.perlbench: -xCORE-AVX2(pass 2) -prof-gen(pass 1) -ipo(pass 2)

-O3(pass 2) -no-prec-div(pass 2) -prof-use(pass 2)

-opt-prefetch -ansi-alias

401.bzip2: -xCORE-AVX2(pass 2) -prof-gen(pass 1) -ipo(pass 2)

-O3(pass 2) -no-prec-div -prof-use(pass 2) -auto-ilp32

-opt-prefetch -ansi-alias

403.gcc: -xCORE-AVX2 -ipo -O3 -no-prec-div -inline-calloc

-opt-malloc-options=3 -auto-ilp32

429.mcf: -xCORE-AVX2 -ipo -O3 -no-prec-div -parallel

-opt-prefetch -auto-p32

445.gobmk: -xCORE-AVX2(pass 2) -prof-gen(pass 1) -prof-use(pass 2)

-ansi-alias

Continued on next page

Standard Performance Evaluation Corporation

info@spec.org

http://www.spec.org/



SPEC CINT2006 Result

Copyright 2006-2015 Standard Performance Evaluation Corporation

Lenovo Group Limited

SPECint2006 = 61.5

Lenovo NeXtScale nx360 M5
(Intel Xeon E5-2695 v3, 2.30 GHz)

SPECint_base2006 = 59.2

CPU2006 license: 9017

Test date: Jul-2015

Test sponsor: Lenovo Group Limited

Hardware Availability: Nov-2014

Tested by: Lenovo Group Limited

Software Availability: Sep-2014

Peak Optimization Flags (Continued)

456.hmmr: -xCORE-AVX2 -ipo -O3 -no-prec-div -unroll2 -auto-ilp32
-ansi-alias

458.sjeng: -xCORE-AVX2(pass 2) -prof-gen(pass 1) -ipo(pass 2)
-O3(pass 2) -no-prec-div(pass 2) -prof-use(pass 2)
-unroll4

462.libquantum: basepeak = yes

464.h264ref: basepeak = yes

C++ benchmarks:

471.omnetpp: -xCORE-AVX2(pass 2) -prof-gen(pass 1) -ipo(pass 2)
-O3(pass 2) -no-prec-div(pass 2) -prof-use(pass 2)
-opt-ra-region-strategy=block -ansi-alias
-Wl,-z,muldefs -L/sh -lsmarheap

473.astar: -xCORE-AVX2 -ipo -O3 -no-prec-div -opt-prefetch
-auto-p32 -Wl,-z,muldefs -L/sh -lsmarheap64

483.xalancbmk: -xCORE-AVX2 -ipo -O3 -no-prec-div -opt-prefetch
-ansi-alias -Wl,-z,muldefs -L/sh -lsmarheap

Peak Other Flags

C benchmarks:

403.gcc: -Dalloca=_alloca

The flags files that were used to format this result can be browsed at

<http://www.spec.org/cpu2006/flags/Intel-ic15.0-official-linux64.html>

<http://www.spec.org/cpu2006/flags/IBM-Platform-Flags-V1.2-HSW-B.html>

You can also download the XML flags sources by saving the following links:

<http://www.spec.org/cpu2006/flags/Intel-ic15.0-official-linux64.xml>

<http://www.spec.org/cpu2006/flags/IBM-Platform-Flags-V1.2-HSW-B.xml>



SPEC CINT2006 Result

Copyright 2006-2015 Standard Performance Evaluation Corporation

Lenovo Group Limited

Lenovo NeXtScale nx360 M5
(Intel Xeon E5-2695 v3, 2.30 GHz)

SPECint2006 = 61.5

SPECint_base2006 = 59.2

CPU2006 license: 9017

Test sponsor: Lenovo Group Limited

Tested by: Lenovo Group Limited

Test date: Jul-2015

Hardware Availability: Nov-2014

Software Availability: Sep-2014

SPEC and SPECint are registered trademarks of the Standard Performance Evaluation Corporation. All other brand and product names appearing in this result are trademarks or registered trademarks of their respective holders.

For questions about this result, please contact the tester.
For other inquiries, please contact webmaster@spec.org.

Tested with SPEC CPU2006 v1.2.
Report generated on Wed Aug 12 11:07:42 2015 by SPEC CPU2006 PS/PDF formatter v6932.
Originally published on 12 August 2015.