



SPEC® CFP2006 Result

Copyright 2006-2015 Standard Performance Evaluation Corporation

Lenovo Group Limited

SPECfp®2006 = 114

Lenovo System x3500 M5
(Intel Xeon E5-2698 v3, 2.30 GHz)

SPECfp_base2006 = 107

CPU2006 license: 9017

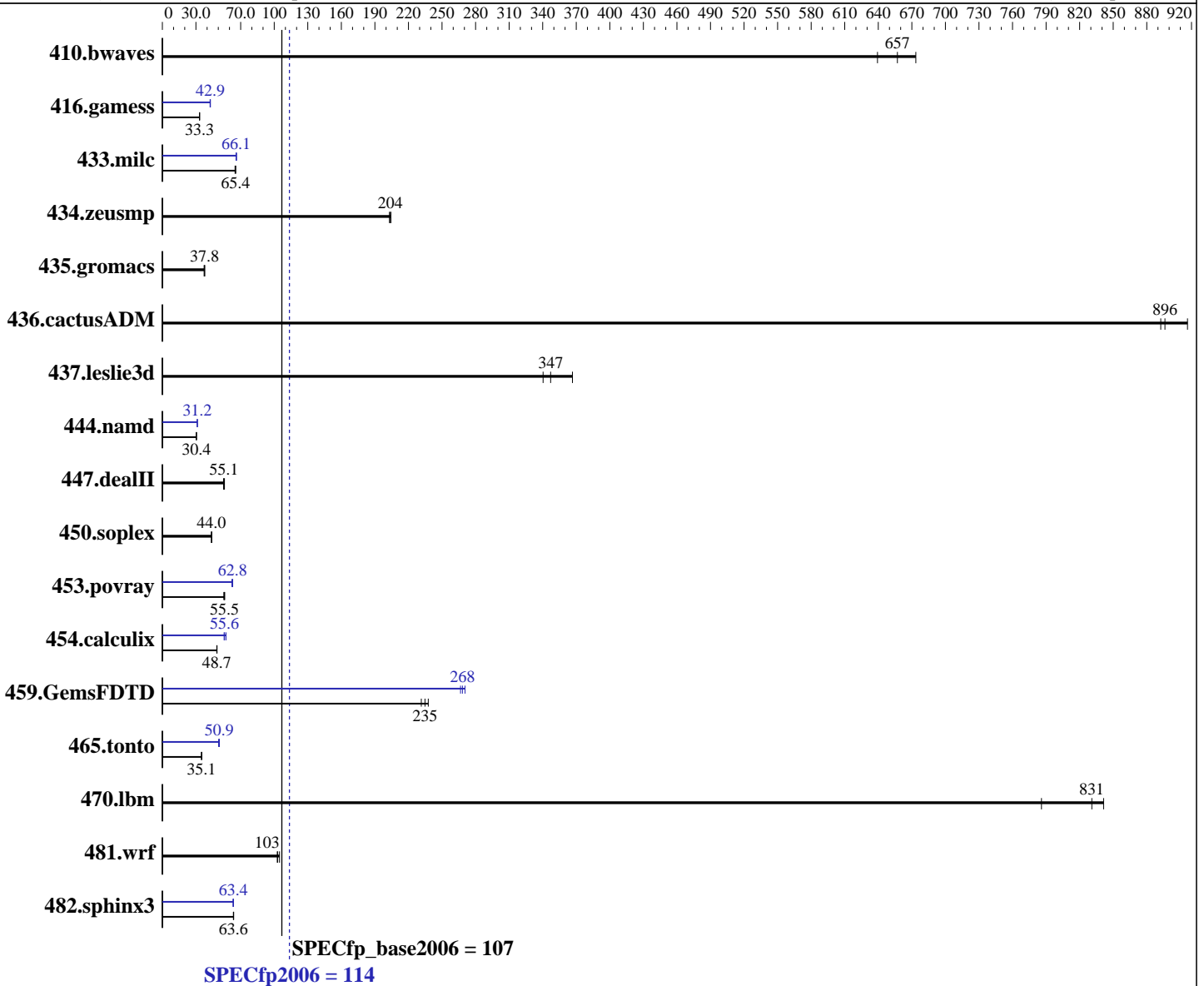
Test date: Aug-2015

Test sponsor: Lenovo Group Limited

Hardware Availability: Jan-2015

Tested by: Lenovo Group Limited

Software Availability: Sep-2014



Hardware	
CPU Name:	Intel Xeon E5-2698 v3
CPU Characteristics:	Intel Turbo Boost Technology up to 3.60 GHz
CPU MHz:	2300
FPU:	Integrated
CPU(s) enabled:	32 cores, 2 chips, 16 cores/chip, 2 threads/core
CPU(s) orderable:	1,2 chips
Primary Cache:	32 KB I + 32 KB D on chip per core
Secondary Cache:	256 KB I+D on chip per core

Continued on next page

Software	
Operating System:	Red Hat Enterprise Linux Server release 7.0 (Maipo)
Compiler:	3.10.0-123.el7.x86_64 C/C++: Version 15.0.0.090 of Intel C++ Studio XE for Linux; Fortran: Version 15.0.0.090 of Intel Fortran Studio XE for Linux
Auto Parallel:	Yes
File System:	xf

Continued on next page



SPEC CFP2006 Result

Copyright 2006-2015 Standard Performance Evaluation Corporation

Lenovo Group Limited

SPECfp2006 = 114

Lenovo System x3500 M5
(Intel Xeon E5-2698 v3, 2.30 GHz)

SPECfp_base2006 = 107

CPU2006 license: 9017

Test date: Aug-2015

Test sponsor: Lenovo Group Limited

Hardware Availability: Jan-2015

Tested by: Lenovo Group Limited

Software Availability: Sep-2014

L3 Cache: 40 MB I+D on chip per chip
Other Cache: None
Memory: 256 GB (16 x 16 GB 2Rx4 PC4-2133P-R)
Disk Subsystem: 1 x 960 GB SATA SSD
Other Hardware: None

System State: Run level 3 (multi-user)
Base Pointers: 64-bit
Peak Pointers: 32/64-bit
Other Software: None

Results Table

Benchmark	Base						Peak					
	Seconds	Ratio	Seconds	Ratio	Seconds	Ratio	Seconds	Ratio	Seconds	Ratio	Seconds	Ratio
410.bwaves	21.3	639	<u>20.7</u>	<u>657</u>	20.2	674	21.3	639	<u>20.7</u>	<u>657</u>	20.2	674
416.gamess	590	33.2	588	33.3	<u>589</u>	<u>33.3</u>	456	42.9	<u>457</u>	<u>42.9</u>	459	42.6
433.milc	<u>140</u>	<u>65.4</u>	140	65.5	141	65.0	139	65.8	<u>139</u>	<u>66.1</u>	138	66.3
434.zeusmp	<u>44.6</u>	<u>204</u>	44.8	203	44.5	204	<u>44.6</u>	<u>204</u>	44.8	203	44.5	204
435.gromacs	191	37.3	189	37.8	<u>189</u>	<u>37.8</u>	191	37.3	189	37.8	<u>189</u>	<u>37.8</u>
436.cactusADM	13.4	893	<u>13.3</u>	<u>896</u>	13.0	916	13.4	893	<u>13.3</u>	<u>896</u>	13.0	916
437.leslie3d	<u>27.1</u>	<u>347</u>	25.6	367	27.6	340	<u>27.1</u>	<u>347</u>	25.6	367	27.6	340
444.namd	264	30.4	<u>264</u>	<u>30.4</u>	263	30.4	257	31.2	256	31.3	<u>257</u>	<u>31.2</u>
447.dealII	209	54.7	206	55.5	<u>208</u>	<u>55.1</u>	209	54.7	206	55.5	<u>208</u>	<u>55.1</u>
450.soplex	190	43.9	<u>190</u>	<u>44.0</u>	189	44.0	190	43.9	<u>190</u>	<u>44.0</u>	189	44.0
453.povray	95.5	55.7	96.9	54.9	<u>95.9</u>	<u>55.5</u>	85.7	62.1	84.6	62.9	<u>84.7</u>	<u>62.8</u>
454.calculix	170	48.7	169	48.9	<u>169</u>	<u>48.7</u>	<u>148</u>	<u>55.6</u>	145	56.9	149	55.2
459.GemsFDTD	<u>45.2</u>	<u>235</u>	45.8	231	44.6	238	39.2	271	<u>39.6</u>	<u>268</u>	39.8	267
465.tonto	280	35.2	282	35.0	<u>280</u>	<u>35.1</u>	<u>193</u>	<u>50.9</u>	193	51.0	196	50.3
470.lbm	16.3	841	17.5	786	<u>16.5</u>	<u>831</u>	16.3	841	17.5	786	<u>16.5</u>	<u>831</u>
481.wrf	107	105	<u>108</u>	<u>103</u>	109	103	107	105	<u>108</u>	<u>103</u>	109	103
482.sphinx3	<u>306</u>	<u>63.6</u>	307	63.5	306	63.8	308	63.2	307	63.6	<u>307</u>	<u>63.4</u>

Results appear in the order in which they were run. Bold underlined text indicates a median measurement.

Operating System Notes

Stack size set to unlimited using "ulimit -s unlimited"

Platform Notes

BIOS setting:
Operating Mode set to "Efficiency-Favor Performance"
Sysinfo program /home/SPEC/config/sysinfo.rev6914
\$Rev: 6914 \$ \$Date:: 2014-06-25 #\$ e3fbb8667b5a285932ceab81e28219e1
running on x3500M5 Fri Aug 28 19:44:47 2015

This section contains SUT (System Under Test) info as seen by some common utilities. To remove or add to this section, see:
<http://www.spec.org/cpu2006/Docs/config.html#sysinfo>

Continued on next page



SPEC CFP2006 Result

Copyright 2006-2015 Standard Performance Evaluation Corporation

Lenovo Group Limited

SPECfp2006 = 114

Lenovo System x3500 M5
(Intel Xeon E5-2698 v3, 2.30 GHz)

SPECfp_base2006 = 107

CPU2006 license: 9017

Test date: Aug-2015

Test sponsor: Lenovo Group Limited

Hardware Availability: Jan-2015

Tested by: Lenovo Group Limited

Software Availability: Sep-2014

Platform Notes (Continued)

```

From /proc/cpuinfo
model name      : Intel(R) Xeon(R) CPU E5-2698 v3 @ 2.30GHz
 2 "physical id"s (chips)
 64 "processors"
cores, siblings (Caution: counting these is hw and system dependent. The
following excerpts from /proc/cpuinfo might not be reliable. Use with
caution.)
  cpu cores    : 16
  siblings     : 32
 physical 0: cores 0 1 2 3 4 5 6 7 8 9 10 11 12 13 14 15
 physical 1: cores 0 1 2 3 4 5 6 7 8 9 10 11 12 13 14 15
 cache size   : 40960 KB

```

```

From /proc/meminfo
MemTotal:      263452116 kB
HugePages_Total: 0
Hugepagesize:  2048 kB

```

```

From /etc/*release* /etc/*version*
os-release:
NAME="Red Hat Enterprise Linux Server"
VERSION="7.0 (Maipo)"
ID="rhel"
ID_LIKE="fedora"
VERSION_ID="7.0"
PRETTY_NAME="Red Hat Enterprise Linux Server 7.0 (Maipo)"
ANSI_COLOR="0;31"
CPE_NAME="cpe:/o:redhat:enterprise_linux:7.0:GA:server"
redhat-release: Red Hat Enterprise Linux Server release 7.0 (Maipo)
system-release: Red Hat Enterprise Linux Server release 7.0 (Maipo)
system-release-cpe: cpe:/o:redhat:enterprise_linux:7.0:ga:server

```

```

uname -a:
Linux x3500M5 3.10.0-123.el7.x86_64 #1 SMP Mon May 5 11:16:57 EDT 2014 x86_64
x86_64 x86_64 GNU/Linux

```

```

SPEC is set to: /home/SPEC
Filesystem      Type  Size  Used Avail Use% Mounted on
/dev/mapper/rhel-root xfs  927G 140G 787G  16% /

```

Additional information from dmidecode:

Warning: Use caution when you interpret this section. The 'dmidecode' program reads system data which is "intended to allow hardware to be accurately determined", but the intent may not be met, as there are frequent changes to hardware, firmware, and the "DMTF SMBIOS" standard.

```

BIOS IBM  -[TAE105J-1.10]- 04/20/2015
Memory:
16x Hynix HMA42GR7MFR4N-TFT1 16 GB 2 rank 2133 MHz
8x NO DIMM Unknown

```

Continued on next page



SPEC CFP2006 Result

Copyright 2006-2015 Standard Performance Evaluation Corporation

Lenovo Group Limited

SPECfp2006 = 114

Lenovo System x3500 M5
(Intel Xeon E5-2698 v3, 2.30 GHz)

SPECfp_base2006 = 107

CPU2006 license: 9017

Test date: Aug-2015

Test sponsor: Lenovo Group Limited

Hardware Availability: Jan-2015

Tested by: Lenovo Group Limited

Software Availability: Sep-2014

Platform Notes (Continued)

(End of data from sysinfo program)

General Notes

Environment variables set by runspec before the start of the run:

KMP_AFFINITY = "granularity=fine,compact,1,0"

LD_LIBRARY_PATH = "/home/SPEC/libs/32:/home/SPEC/libs/64:/home/SPEC/sh"

OMP_NUM_THREADS = "32"

Binaries compiled on a system with 1x Core i5-4670K CPU + 16GB
memory using RedHat EL 7.0

Transparent Huge Pages enabled with:

echo always > /sys/kernel/mm/transparent_hugepage/enabled

Base Compiler Invocation

C benchmarks:

icc -m64

C++ benchmarks:

icpc -m64

Fortran benchmarks:

ifort -m64

Benchmarks using both Fortran and C:

icc -m64 ifort -m64

Base Portability Flags

410.bwaves: -DSPEC_CPU_LP64
 416.gamess: -DSPEC_CPU_LP64
 433.milc: -DSPEC_CPU_LP64
 434.zeusmp: -DSPEC_CPU_LP64
 435.gromacs: -DSPEC_CPU_LP64 -nofor_main
 436.cactusADM: -DSPEC_CPU_LP64 -nofor_main
 437.leslie3d: -DSPEC_CPU_LP64
 444.namd: -DSPEC_CPU_LP64
 447.dealII: -DSPEC_CPU_LP64
 450.soplex: -DSPEC_CPU_LP64
 453.povray: -DSPEC_CPU_LP64
 454.calculix: -DSPEC_CPU_LP64 -nofor_main
 459.GemsFDTD: -DSPEC_CPU_LP64
 465.tonto: -DSPEC_CPU_LP64
 470.lbm: -DSPEC_CPU_LP64
 481.wrf: -DSPEC_CPU_LP64 -DSPEC_CPU_CASE_FLAG -DSPEC_CPU_LINUX

Continued on next page



SPEC CFP2006 Result

Copyright 2006-2015 Standard Performance Evaluation Corporation

Lenovo Group Limited

SPECfp2006 = 114

Lenovo System x3500 M5
(Intel Xeon E5-2698 v3, 2.30 GHz)

SPECfp_base2006 = 107

CPU2006 license: 9017

Test date: Aug-2015

Test sponsor: Lenovo Group Limited

Hardware Availability: Jan-2015

Tested by: Lenovo Group Limited

Software Availability: Sep-2014

Base Portability Flags (Continued)

482.sphinx3: -DSPEC_CPU_LP64

Base Optimization Flags

C benchmarks:

-xCORE-AVX2 -ipo -O3 -no-prec-div -parallel -opt-prefetch
-ansi-alias

C++ benchmarks:

-xCORE-AVX2 -ipo -O3 -no-prec-div -opt-prefetch -ansi-alias

Fortran benchmarks:

-xCORE-AVX2 -ipo -O3 -no-prec-div -parallel -opt-prefetch

Benchmarks using both Fortran and C:

-xCORE-AVX2 -ipo -O3 -no-prec-div -parallel -opt-prefetch
-ansi-alias

Peak Compiler Invocation

C benchmarks:

icc -m64

C++ benchmarks:

icpc -m64

Fortran benchmarks:

ifort -m64

Benchmarks using both Fortran and C:

icc -m64 ifort -m64

Peak Portability Flags

Same as Base Portability Flags

Peak Optimization Flags

C benchmarks:

433.milc: -xCORE-AVX2(pass 2) -prof-gen(pass 1) -ipo(pass 2)
-O3(pass 2) -no-prec-div(pass 2) -prof-use(pass 2)
-auto-ilp32 -ansi-alias

Continued on next page



SPEC CFP2006 Result

Copyright 2006-2015 Standard Performance Evaluation Corporation

Lenovo Group Limited

SPECfp2006 = 114

Lenovo System x3500 M5
(Intel Xeon E5-2698 v3, 2.30 GHz)

SPECfp_base2006 = 107

CPU2006 license: 9017

Test date: Aug-2015

Test sponsor: Lenovo Group Limited

Hardware Availability: Jan-2015

Tested by: Lenovo Group Limited

Software Availability: Sep-2014

Peak Optimization Flags (Continued)

470.lbm: basepeak = yes

482.sphinx3: -xCORE-AVX2 -ipo -O3 -no-prec-div -unroll2 -ansi-alias
-parallel

C++ benchmarks:

444.namd: -xCORE-AVX2(pass 2) -prof-gen(pass 1) -ipo(pass 2)
-O3(pass 2) -no-prec-div(pass 2) -prof-use(pass 2)
-fno-alias -auto-ilp32

447.dealIII: basepeak = yes

450.soplex: basepeak = yes

453.povray: -xCORE-AVX2(pass 2) -prof-gen(pass 1) -ipo(pass 2)
-O3(pass 2) -no-prec-div(pass 2) -prof-use(pass 2) -unroll4
-ansi-alias

Fortran benchmarks:

410.bwaves: basepeak = yes

416.gamess: -xCORE-AVX2(pass 2) -prof-gen(pass 1) -ipo(pass 2)
-O3(pass 2) -no-prec-div(pass 2) -prof-use(pass 2) -unroll2
-inline-level=0 -scalar-rep-

434.zeusmp: basepeak = yes

437.leslie3d: basepeak = yes

459.GemsFDTD: -xCORE-AVX2(pass 2) -prof-gen(pass 1) -ipo(pass 2)
-O3(pass 2) -no-prec-div(pass 2) -prof-use(pass 2) -unroll2
-inline-level=0 -opt-prefetch -parallel

465.tonto: -xCORE-AVX2(pass 2) -prof-gen(pass 1) -ipo(pass 2)
-O3(pass 2) -no-prec-div(pass 2) -prof-use(pass 2)
-inline-calloc -opt-malloc-options=3 -auto -unroll4

Benchmarks using both Fortran and C:

435.gromacs: basepeak = yes

436.cactusADM: basepeak = yes

454.calculix: -xCORE-AVX2 -ipo -O3 -no-prec-div -auto-ilp32 -ansi-alias

Continued on next page



SPEC CFP2006 Result

Copyright 2006-2015 Standard Performance Evaluation Corporation

Lenovo Group Limited

SPECfp2006 = 114

Lenovo System x3500 M5
(Intel Xeon E5-2698 v3, 2.30 GHz)

SPECfp_base2006 = 107

CPU2006 license: 9017

Test date: Aug-2015

Test sponsor: Lenovo Group Limited

Hardware Availability: Jan-2015

Tested by: Lenovo Group Limited

Software Availability: Sep-2014

Peak Optimization Flags (Continued)

481.wrf: basepeak = yes

The flags files that were used to format this result can be browsed at

<http://www.spec.org/cpu2006/flags/Intel-ic15.0-official-linux64.html>

<http://www.spec.org/cpu2006/flags/Lenovo-Platform-Flags-V1.2-HSW-B.20150923.html>

You can also download the XML flags sources by saving the following links:

<http://www.spec.org/cpu2006/flags/Intel-ic15.0-official-linux64.xml>

<http://www.spec.org/cpu2006/flags/Lenovo-Platform-Flags-V1.2-HSW-B.20150923.xml>

SPEC and SPECfp are registered trademarks of the Standard Performance Evaluation Corporation. All other brand and product names appearing in this result are trademarks or registered trademarks of their respective holders.

For questions about this result, please contact the tester.
For other inquiries, please contact webmaster@spec.org.

Tested with SPEC CPU2006 v1.2.
Report generated on Wed Sep 23 11:03:59 2015 by SPEC CPU2006 PS/PDF formatter v6932.
Originally published on 22 September 2015.