



SPEC® CINT2006 Result

Copyright 2006-2015 Standard Performance Evaluation Corporation

Huawei

SPECint®2006 = 59.9

Huawei CH226 V3 (Intel Xeon E5-2670 v3)

SPECint_base2006 = 57.7

CPU2006 license: 3175

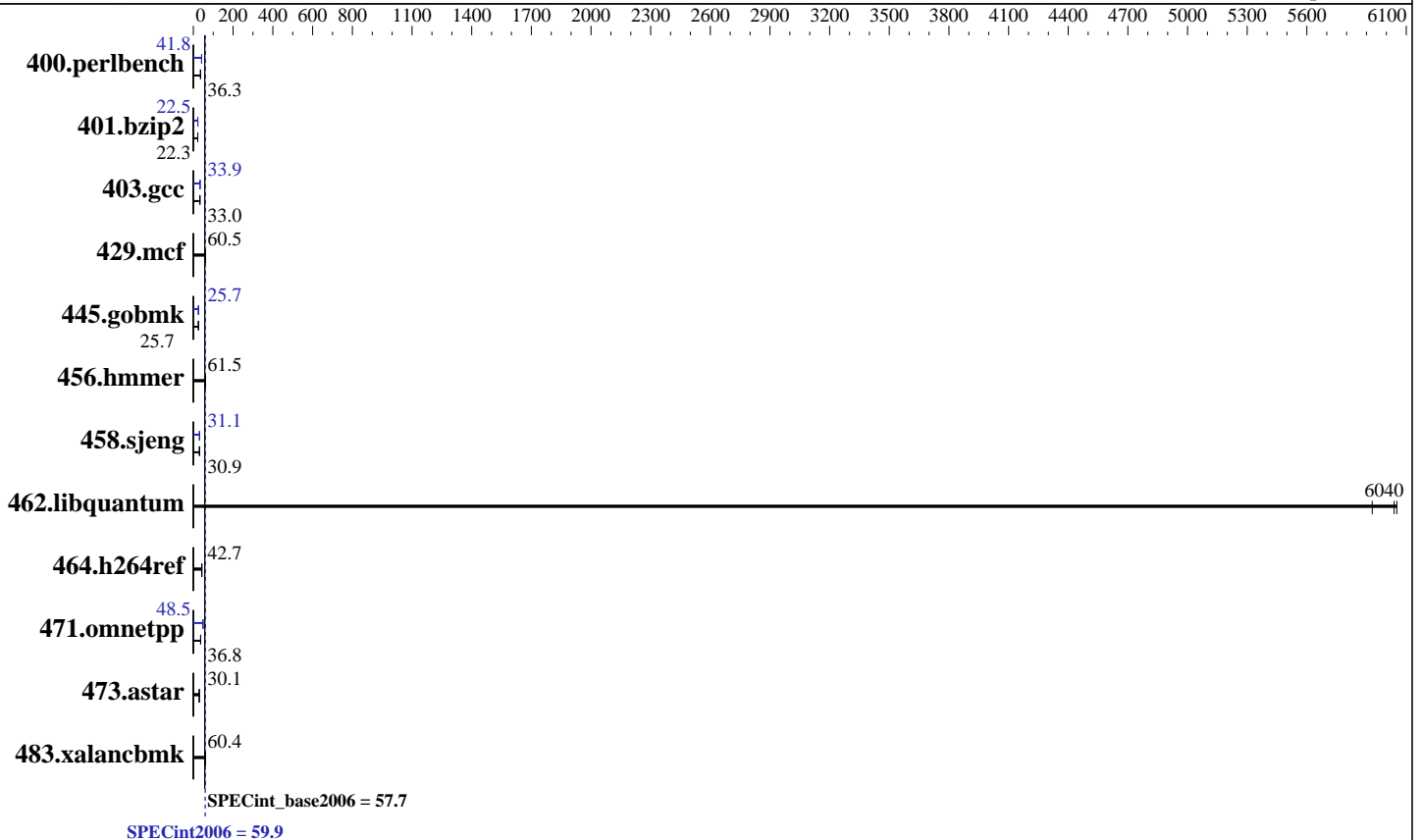
Test sponsor: Huawei

Tested by: Huawei

Test date: Sep-2015

Hardware Availability: Sep-2014

Software Availability: Sep-2014



Hardware

CPU Name: Intel Xeon E5-2670 v3
 CPU Characteristics: Intel Turbo Boost Technology up to 3.10 GHz
 CPU MHz: 2300
 FPU: Integrated
 CPU(s) enabled: 24 cores, 2 chips, 12 cores/chip
 CPU(s) orderable: 1,2 chip
 Primary Cache: 32 KB I + 32 KB D on chip per core
 Secondary Cache: 256 KB I+D on chip per core
 L3 Cache: 30 MB I+D on chip per chip
 Other Cache: None
 Memory: 256 GB (16 x 16 GB 2Rx4 PC4-2133P-R)
 Disk Subsystem: 1 x 300 GB SAS, 10000 RPM
 Other Hardware: None

Software

Operating System: Red Hat Enterprise Linux Server release 7.0 (Maipo)
 3.10.0-123.el7.x86_64
 Compiler: C/C++: Version 15.0.0.090 of Intel C++ Studio XE for Linux
 Auto Parallel: Yes
 File System: ext4
 System State: Run level 3 (multi-user)
 Base Pointers: 32/64-bit
 Peak Pointers: 32/64-bit
 Other Software: Microquill SmartHeap V10.0



SPEC CINT2006 Result

Copyright 2006-2015 Standard Performance Evaluation Corporation

Huawei

SPECint2006 = 59.9

Huawei CH226 V3 (Intel Xeon E5-2670 v3)

SPECint_base2006 = 57.7

CPU2006 license: 3175
Test sponsor: Huawei
Tested by: Huawei

Test date: Sep-2015
Hardware Availability: Sep-2014
Software Availability: Sep-2014

Results Table

Benchmark	Base						Peak					
	Seconds	Ratio	Seconds	Ratio	Seconds	Ratio	Seconds	Ratio	Seconds	Ratio	Seconds	Ratio
400.perlbench	269	36.3	<u>269</u>	<u>36.3</u>	269	36.3	234	41.8	235	41.7	<u>234</u>	<u>41.8</u>
401.bzip2	<u>432</u>	<u>22.3</u>	432	22.3	434	22.3	<u>429</u>	<u>22.5</u>	429	22.5	428	22.5
403.gcc	244	33.0	<u>244</u>	<u>33.0</u>	243	33.1	<u>237</u>	<u>33.9</u>	237	33.9	238	33.8
429.mcf	154	59.1	151	60.5	<u>151</u>	<u>60.5</u>	154	59.1	151	60.5	<u>151</u>	<u>60.5</u>
445.gobmk	<u>408</u>	<u>25.7</u>	409	25.6	407	25.8	<u>409</u>	<u>25.7</u>	408	25.7	409	25.7
456.hammer	<u>152</u>	<u>61.5</u>	151	61.6	152	61.5	<u>152</u>	<u>61.5</u>	151	61.6	152	61.5
458.sjeng	391	30.9	<u>391</u>	<u>30.9</u>	391	30.9	390	31.1	<u>389</u>	<u>31.1</u>	389	31.1
462.libquantum	3.49	5930	3.42	6050	<u>3.43</u>	<u>6040</u>	3.49	5930	3.42	6050	<u>3.43</u>	<u>6040</u>
464.h264ref	519	42.7	<u>519</u>	<u>42.7</u>	519	42.7	519	42.7	<u>519</u>	<u>42.7</u>	519	42.7
471.omnetpp	170	36.8	170	36.8	<u>170</u>	<u>36.8</u>	<u>129</u>	<u>48.5</u>	129	48.6	129	48.4
473.astar	233	30.1	<u>233</u>	<u>30.1</u>	235	29.9	233	30.1	<u>233</u>	<u>30.1</u>	235	29.9
483.xalancbmk	115	60.2	<u>114</u>	<u>60.4</u>	113	61.0	115	60.2	<u>114</u>	<u>60.4</u>	113	61.0

Results appear in the order in which they were run. Bold underlined text indicates a median measurement.

Submit Notes

The config file option 'submit' was used.

Operating System Notes

Stack size set to unlimited using "ulimit -s unlimited"

Platform Notes

BIOS configuration:

Set Power Efficiency Mode to Custom

Set Snoop Mode to ES mode

Set Patrol Scrub to Disable

Set Hyper-Threading to Disable

Sysinfo program /spec/config/sysinfo.rev6914

\$Rev: 6914 \$ \$Date:: 2014-06-25 # \$ e3fbb8667b5a285932ceab81e28219e1

running on localhost.localdomain Wed Sep 2 05:32:49 2015

This section contains SUT (System Under Test) info as seen by some common utilities. To remove or add to this section, see:

<http://www.spec.org/cpu2006/Docs/config.html#sysinfo>

From /proc/cpuinfo

model name : Intel(R) Xeon(R) CPU E5-2670 v3 @ 2.30GHz

2 "physical id"s (chips)

24 "processors"

cores, siblings (Caution: counting these is hw and system dependent. The following excerpts from /proc/cpuinfo might not be reliable. Use with

Continued on next page

Standard Performance Evaluation Corporation

info@spec.org

<http://www.spec.org/>

Page 2



SPEC CINT2006 Result

Copyright 2006-2015 Standard Performance Evaluation Corporation

Huawei

SPECint2006 = 59.9

Huawei CH226 V3 (Intel Xeon E5-2670 v3)

SPECint_base2006 = 57.7

CPU2006 license: 3175

Test sponsor: Huawei

Tested by: Huawei

Test date: Sep-2015

Hardware Availability: Sep-2014

Software Availability: Sep-2014

Platform Notes (Continued)

```

caution.)
  cpu cores : 12
  siblings  : 12
  physical 0: cores 0 1 2 3 4 5 8 9 10 11 12 13
  physical 1: cores 0 1 2 3 4 5 8 9 10 11 12 13
  cache size : 30720 KB

```

```

From /proc/meminfo
MemTotal:      263578440 kB
HugePages_Total:      0
Hugepagesize:    2048 kB

```

```

From /etc/*release* /etc/*version*
os-release:
NAME="Red Hat Enterprise Linux Server"
VERSION="7.0 (Maipo)"
ID="rhel"
ID_LIKE="fedora"
VERSION_ID="7.0"
PRETTY_NAME="Red Hat Enterprise Linux Server 7.0 (Maipo)"
ANSI_COLOR="0;31"
CPE_NAME="cpe:/o:redhat:enterprise_linux:7.0:GA:server"
redhat-release: Red Hat Enterprise Linux Server release 7.0 (Maipo)
system-release: Red Hat Enterprise Linux Server release 7.0 (Maipo)
system-release-cpe: cpe:/o:redhat:enterprise_linux:7.0:ga:server

```

```

uname -a:
Linux localhost.localdomain 3.10.0-123.el7.x86_64 #1 SMP Mon May 5 11:16:57
EDT 2014 x86_64 x86_64 x86_64 GNU/Linux

```

run-level 3 Sep 2 05:01

```

SPEC is set to: /spec
Filesystem      Type      Size      Used Avail Use% Mounted on
/dev/sdal       ext4     443G      98G   323G   24% /

```

Additional information from dmidecode:

Warning: Use caution when you interpret this section. The 'dmidecode' program reads system data which is "intended to allow hardware to be accurately determined", but the intent may not be met, as there are frequent changes to hardware, firmware, and the "DMTF SMBIOS" standard.

```

BIOS Insyde Corp. 1.39 05/06/2015
Memory:
8x Micron 36ASF2G72PZ-2G1A2 16 GB 1 rank 2133 MHz
8x Micron 36ASF2G72PZ-2G1A2 16 GB 2 rank 2133 MHz
8x NO DIMM NO DIMM 3 rank

```

(End of data from sysinfo program)



SPEC CINT2006 Result

Copyright 2006-2015 Standard Performance Evaluation Corporation

Huawei

SPECint2006 = 59.9

Huawei CH226 V3 (Intel Xeon E5-2670 v3)

SPECint_base2006 = 57.7

CPU2006 license: 3175

Test sponsor: Huawei

Tested by: Huawei

Test date: Sep-2015

Hardware Availability: Sep-2014

Software Availability: Sep-2014

General Notes

Environment variables set by runspec before the start of the run:

```
KMP_AFFINITY = "granularity=fine,scatter"  
LD_LIBRARY_PATH = "/spec/libs/32:/spec/libs/64:/spec/sh"  
OMP_NUM_THREADS = "24"
```

Binaries compiled on a system with 1x Core i5-4670K CPU + 16GB memory using RedHat EL 7.0

Transparent Huge Pages enabled with:

```
echo always > /sys/kernel/mm/transparent_hugepage/enabled
```

Base Compiler Invocation

C benchmarks:

```
icc -m64
```

C++ benchmarks:

```
icpc -m64
```

Base Portability Flags

```
400.perlbench: -DSPEC_CPU_LP64 -DSPEC_CPU_LINUX_X64  
401.bzip2: -DSPEC_CPU_LP64  
403.gcc: -DSPEC_CPU_LP64  
429.mcf: -DSPEC_CPU_LP64  
445.gobmk: -DSPEC_CPU_LP64  
456.hmmer: -DSPEC_CPU_LP64  
458.sjeng: -DSPEC_CPU_LP64  
462.libquantum: -DSPEC_CPU_LP64 -DSPEC_CPU_LINUX  
464.h264ref: -DSPEC_CPU_LP64  
471.omnetpp: -DSPEC_CPU_LP64  
473.astar: -DSPEC_CPU_LP64  
483.xalancbmk: -DSPEC_CPU_LP64 -DSPEC_CPU_LINUX
```

Base Optimization Flags

C benchmarks:

```
-xCORE-AVX2 -ipo -O3 -no-prec-div -parallel -opt-prefetch -auto-p32
```

C++ benchmarks:

```
-xCORE-AVX2 -ipo -O3 -no-prec-div -opt-prefetch -auto-p32  
-Wl,-z,muldefs -L/sh -lsmartheap64
```



SPEC CINT2006 Result

Copyright 2006-2015 Standard Performance Evaluation Corporation

Huawei

SPECint2006 = 59.9

Huawei CH226 V3 (Intel Xeon E5-2670 v3)

SPECint_base2006 = 57.7

CPU2006 license: 3175
Test sponsor: Huawei
Tested by: Huawei

Test date: Sep-2015
Hardware Availability: Sep-2014
Software Availability: Sep-2014

Base Other Flags

C benchmarks:

403.gcc: -Dalloca=_alloca

Peak Compiler Invocation

C benchmarks (except as noted below):

icc -m64

400.perlbench: icc -m32 -L/opt/intel/composer_xe_2015/lib/ia32

445.gobmk: icc -m32 -L/opt/intel/composer_xe_2015/lib/ia32

C++ benchmarks (except as noted below):

icpc -m64

471.omnetpp: icpc -m32 -L/opt/intel/composer_xe_2015/lib/ia32

Peak Portability Flags

400.perlbench: -DSPEC_CPU_LINUX_IA32
401.bzip2: -DSPEC_CPU_LP64
403.gcc: -DSPEC_CPU_LP64
429.mcf: -DSPEC_CPU_LP64
456.hmmer: -DSPEC_CPU_LP64
458.sjeng: -DSPEC_CPU_LP64
462.libquantum: -DSPEC_CPU_LP64 -DSPEC_CPU_LINUX
464.h264ref: -DSPEC_CPU_LP64
473.astar: -DSPEC_CPU_LP64
483.xalancbmk: -DSPEC_CPU_LP64 -DSPEC_CPU_LINUX

Peak Optimization Flags

C benchmarks:

400.perlbench: -xCORE-AVX2(pass 2) -prof-gen(pass 1) -ipo(pass 2)
-O3(pass 2) -no-prec-div(pass 2) -prof-use(pass 2)
-opt-prefetch -ansi-alias

401.bzip2: -xCORE-AVX2(pass 2) -prof-gen(pass 1) -ipo(pass 2)
-O3(pass 2) -no-prec-div -prof-use(pass 2) -auto-ilp32
-opt-prefetch -ansi-alias

Continued on next page



SPEC CINT2006 Result

Copyright 2006-2015 Standard Performance Evaluation Corporation

Huawei

SPECint2006 = 59.9

Huawei CH226 V3 (Intel Xeon E5-2670 v3)

SPECint_base2006 = 57.7

CPU2006 license: 3175

Test sponsor: Huawei

Tested by: Huawei

Test date: Sep-2015

Hardware Availability: Sep-2014

Software Availability: Sep-2014

Peak Optimization Flags (Continued)

403.gcc: -xCORE-AVX2 -ipo -O3 -no-prec-div -inline-calloc
-opt-malloc-options=3 -auto-ilp32

429.mcf: basepeak = yes

445.gobmk: -xCORE-AVX2(pass 2) -prof-gen(pass 1) -prof-use(pass 2)
-ansi-alias

456.hmmer: basepeak = yes

458.sjeng: -xCORE-AVX2(pass 2) -prof-gen(pass 1) -ipo(pass 2)
-O3(pass 2) -no-prec-div(pass 2) -prof-use(pass 2)
-unroll4

462.libquantum: basepeak = yes

464.h264ref: basepeak = yes

C++ benchmarks:

471.omnetpp: -xCORE-AVX2(pass 2) -prof-gen(pass 1) -ipo(pass 2)
-O3(pass 2) -no-prec-div(pass 2) -prof-use(pass 2)
-opt-ra-region-strategy=block -ansi-alias
-Wl,-z,muldefs -L/sh -lsmarheap

473.astar: basepeak = yes

483.xalancbmk: basepeak = yes

Peak Other Flags

C benchmarks:

403.gcc: -Dalloca=_alloca

The flags files that were used to format this result can be browsed at

<http://www.spec.org/cpu2006/flags/Intel-ic15.0-official-linux64.html>

<http://www.spec.org/cpu2006/flags/Huawei-Platform-Settings-HASWELL-V1.4.html>

You can also download the XML flags sources by saving the following links:

<http://www.spec.org/cpu2006/flags/Intel-ic15.0-official-linux64.xml>

<http://www.spec.org/cpu2006/flags/Huawei-Platform-Settings-HASWELL-V1.4.xml>



SPEC CINT2006 Result

Copyright 2006-2015 Standard Performance Evaluation Corporation

Huawei

SPECint2006 = 59.9

Huawei CH226 V3 (Intel Xeon E5-2670 v3)

SPECint_base2006 = 57.7

CPU2006 license: 3175

Test sponsor: Huawei

Tested by: Huawei

Test date: Sep-2015

Hardware Availability: Sep-2014

Software Availability: Sep-2014

SPEC and SPECint are registered trademarks of the Standard Performance Evaluation Corporation. All other brand and product names appearing in this result are trademarks or registered trademarks of their respective holders.

For questions about this result, please contact the tester.
For other inquiries, please contact webmaster@spec.org.

Tested with SPEC CPU2006 v1.2.
Report generated on Tue Oct 6 13:12:04 2015 by SPEC CPU2006 PS/PDF formatter v6932.
Originally published on 6 October 2015.