



SPEC® CFP2006 Result

Copyright 2006-2016 Standard Performance Evaluation Corporation

Hewlett Packard Enterprise

(Test Sponsor: HPE)

ProLiant XL450 Gen9

(1.70 GHz, Intel Xeon E5-2609 v4)

SPECfp®2006 =

76.6

SPECfp_base2006 =

74.8

CPU2006 license: 3

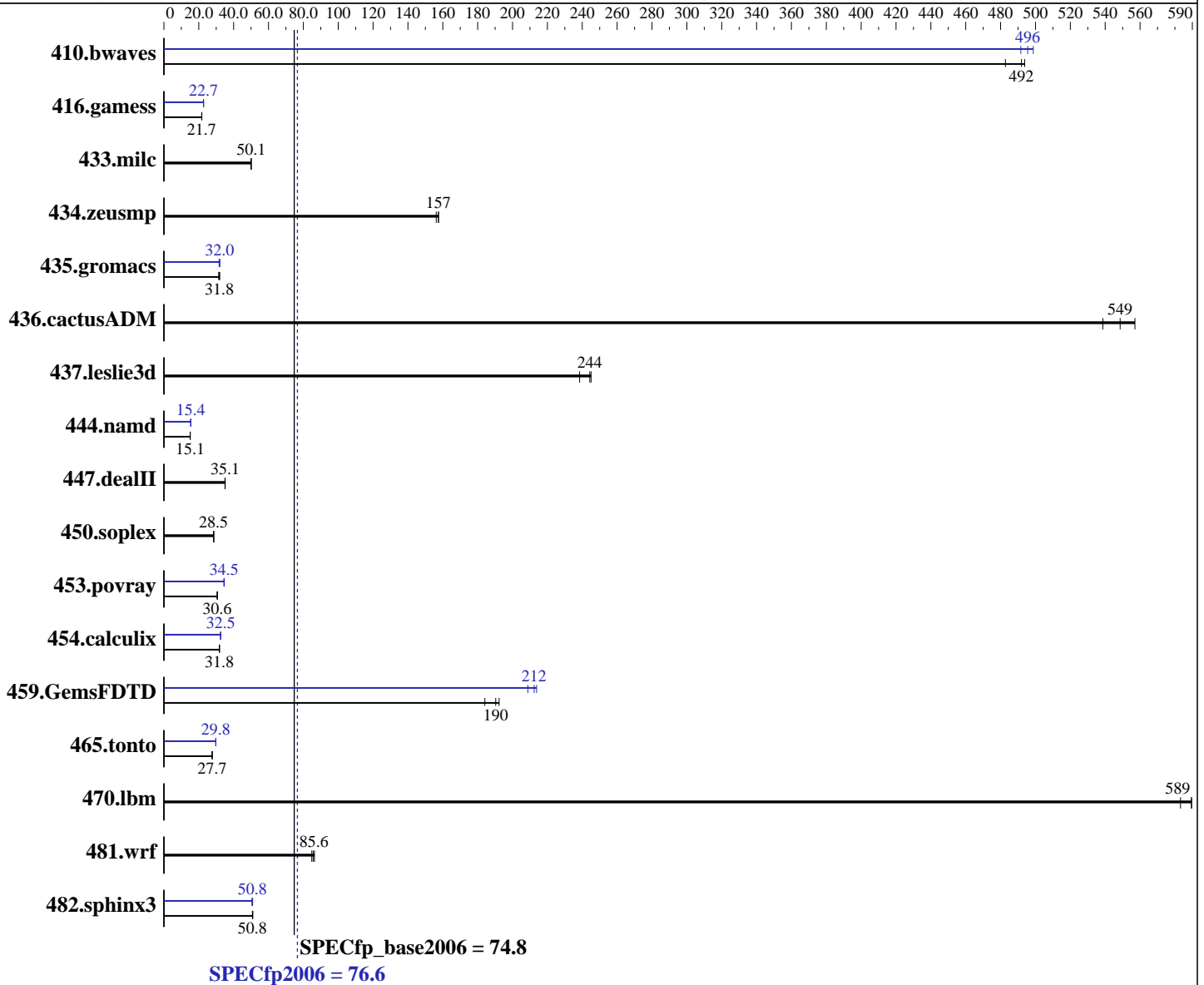
Test sponsor: HPE

Tested by: HPE

Test date: Apr-2016

Hardware Availability: Mar-2016

Software Availability: Nov-2015



Hardware

CPU Name: Intel Xeon E5-2609 v4
 CPU Characteristics:
 CPU MHz: 1700
 FPU: Integrated
 CPU(s) enabled: 16 cores, 2 chips, 8 cores/chip
 CPU(s) orderable: 1,2 chips
 Primary Cache: 32 KB I + 32 KB D on chip per core
 Secondary Cache: 256 KB I+D on chip per core

Continued on next page

Software

Operating System: Red Hat Enterprise Linux Server release 7.2 (Maipo)
 Kernel 3.10.0-327.el7.x86_64
 Compiler: C/C++: Version 16.0.0.101 of Intel C++ Studio XE for Linux;
 Fortran: Version 16.0.0.101 of Intel Fortran Studio XE for Linux
 Auto Parallel: Yes
 File System: xfs

Continued on next page



SPEC CFP2006 Result

Copyright 2006-2016 Standard Performance Evaluation Corporation

Hewlett Packard Enterprise

(Test Sponsor: HPE)

ProLiant XL450 Gen9

(1.70 GHz, Intel Xeon E5-2609 v4)

SPECfp2006 = 76.6

SPECfp_base2006 = 74.8

CPU2006 license: 3

Test sponsor: HPE

Tested by: HPE

Test date: Apr-2016

Hardware Availability: Mar-2016

Software Availability: Nov-2015

L3 Cache: 20 MB I+D on chip per chip
Other Cache: None
Memory: 128 GB (8 x 16 GB 2Rx4 PC4-2400T-R, running at 1866 MHz)
Disk Subsystem: 2 x 480 GB SATA SSD, RAID 1
Other Hardware: None

System State: Run level 3 (multi-user)
Base Pointers: 64-bit
Peak Pointers: 32/64-bit
Other Software: None

Results Table

Benchmark	Base						Peak					
	Seconds	Ratio	Seconds	Ratio	Seconds	Ratio	Seconds	Ratio	Seconds	Ratio	Seconds	Ratio
410.bwaves	27.5	494	<u>27.6</u>	<u>492</u>	28.2	483	27.2	499	<u>27.4</u>	<u>496</u>	27.6	492
416.gamess	899	21.8	<u>902</u>	<u>21.7</u>	904	21.7	861	22.7	861	22.7	<u>861</u>	<u>22.7</u>
433.milc	184	50.0	<u>183</u>	<u>50.1</u>	183	50.1	184	50.0	<u>183</u>	<u>50.1</u>	183	50.1
434.zeusmp	57.8	158	58.2	156	<u>57.8</u>	<u>157</u>	57.8	158	58.2	156	<u>57.8</u>	<u>157</u>
435.gromacs	<u>225</u>	<u>31.8</u>	227	31.4	223	32.0	<u>223</u>	<u>32.0</u>	226	31.6	223	32.0
436.cactusADM	21.5	557	<u>21.8</u>	<u>549</u>	22.2	539	21.5	557	<u>21.8</u>	<u>549</u>	22.2	539
437.leslie3d	<u>38.5</u>	<u>244</u>	38.4	245	39.4	238	<u>38.5</u>	<u>244</u>	38.4	245	39.4	238
444.namd	532	15.1	532	15.1	<u>532</u>	<u>15.1</u>	520	15.4	521	15.4	<u>520</u>	<u>15.4</u>
447.dealII	326	35.1	<u>326</u>	<u>35.1</u>	327	35.0	326	35.1	<u>326</u>	<u>35.1</u>	327	35.0
450.soplex	293	28.5	291	28.7	<u>293</u>	<u>28.5</u>	293	28.5	291	28.7	<u>293</u>	<u>28.5</u>
453.povray	<u>174</u>	<u>30.6</u>	174	30.6	173	30.7	153	34.7	154	34.4	<u>154</u>	<u>34.5</u>
454.calculix	259	31.9	<u>259</u>	<u>31.8</u>	259	31.8	<u>254</u>	<u>32.5</u>	253	32.6	254	32.5
459.GemsFDTD	55.2	192	57.6	184	<u>55.7</u>	<u>190</u>	50.8	209	<u>50.0</u>	<u>212</u>	49.6	214
465.tonto	<u>355</u>	<u>27.7</u>	355	27.7	356	27.6	331	29.8	<u>331</u>	<u>29.8</u>	330	29.8
470.lbm	23.3	590	<u>23.3</u>	<u>589</u>	23.6	583	23.3	590	<u>23.3</u>	<u>589</u>	23.6	583
481.wrf	129	86.4	<u>130</u>	<u>85.6</u>	132	84.8	129	86.4	<u>130</u>	<u>85.6</u>	132	84.8
482.sphinx3	384	50.8	382	51.0	<u>384</u>	<u>50.8</u>	383	50.9	386	50.5	<u>384</u>	<u>50.8</u>

Results appear in the order in which they were run. Bold underlined text indicates a median measurement.

Operating System Notes

Stack size set to unlimited using "ulimit -s unlimited"

Transparent Huge Pages enabled with:

```
echo always > /sys/kernel/mm/transparent_hugepage/enabled
```

Platform Notes

BIOS Configuration:

Power Profile set to Custom

Power Regulator set to HP Static High Performance Mode

Minimum Processor Idle Power Core C-State set to C6 State

Minimum Processor Idle Power Package C-State set to No Package State

QPI Snoop Configuration set to Home Snoop

Collaborative Power Control set to Disabled

Continued on next page

Standard Performance Evaluation Corporation

info@spec.org

http://www.spec.org/

Page 2



SPEC CFP2006 Result

Copyright 2006-2016 Standard Performance Evaluation Corporation

Hewlett Packard Enterprise

(Test Sponsor: HPE)

ProLiant XL450 Gen9

(1.70 GHz, Intel Xeon E5-2609 v4)

SPECfp2006 =

76.6

SPECfp_base2006 =

74.8

CPU2006 license: 3

Test sponsor: HPE

Tested by: HPE

Test date: Apr-2016

Hardware Availability: Mar-2016

Software Availability: Nov-2015

Platform Notes (Continued)

Thermal Configuration set to Maximum Cooling
Processor Power and Utilization Monitoring set to Disabled
Memory Refresh Rate set to 1x Refresh

Sysinfo program /home/cpu2006/config/sysinfo.rev6914
\$Rev: 6914 \$ \$Date:: 2014-06-25 # \$ e3fbb8667b5a285932ceab81e28219e1
running on Dangerfield3 Mon Apr 25 13:57:45 2016

This section contains SUT (System Under Test) info as seen by some common utilities. To remove or add to this section, see: <http://www.spec.org/cpu2006/Docs/config.html#sysinfo>

From /proc/cpuinfo

```
model name      : Intel(R) Xeon(R) CPU E5-2609 v4 @ 1.70GHz
 2 "physical id"s (chips)
 16 "processors"
cores, siblings (Caution: counting these is hw and system dependent. The following excerpts from /proc/cpuinfo might not be reliable. Use with caution.)
  cpu cores      : 8
  siblings       : 8
  physical 0:    : cores 0 1 2 3 4 5 6 7
  physical 1:    : cores 0 1 2 3 4 5 6 7
cache size      : 20480 KB
```

From /proc/meminfo

```
MemTotal:      131731628 kB
HugePages_Total: 0
Hugepagesize:   2048 kB
```

From /etc/*release* /etc/*version*

```
os-release:
NAME="Red Hat Enterprise Linux Server"
VERSION="7.2 (Maipo)"
ID="rhel"
ID_LIKE="fedora"
VERSION_ID="7.2"
PRETTY_NAME="Red Hat Enterprise Linux Server 7.2 (Maipo)"
ANSI_COLOR="0;31"
CPE_NAME="cpe:/o:redhat:enterprise_linux:7.2:GA:server"
redhat-release: Red Hat Enterprise Linux Server release 7.2 (Maipo)
system-release: Red Hat Enterprise Linux Server release 7.2 (Maipo)
system-release-cpe: cpe:/o:redhat:enterprise_linux:7.2:ga:server
```

uname -a:

```
Linux Dangerfield3 3.10.0-327.el7.x86_64 #1 SMP Thu Oct 29 17:29:29 EDT 2015
x86_64 x86_64 x86_64 GNU/Linux
```

run-level 3 Apr 25 13:54

SPEC is set to: /home/cpu2006

```
Filesystem      Type  Size  Used Avail Use% Mounted on
Continued on next page
```



SPEC CFP2006 Result

Copyright 2006-2016 Standard Performance Evaluation Corporation

Hewlett Packard Enterprise

(Test Sponsor: HPE)

ProLiant XL450 Gen9

(1.70 GHz, Intel Xeon E5-2609 v4)

SPECfp2006 =

76.6

SPECfp_base2006 =

74.8

CPU2006 license: 3

Test sponsor: HPE

Tested by: HPE

Test date: Apr-2016

Hardware Availability: Mar-2016

Software Availability: Nov-2015

Platform Notes (Continued)

/dev/sdb1 xfs 373G 20G 354G 6% /
Additional information from dmidecode:

Warning: Use caution when you interpret this section. The 'dmidecode' program reads system data which is "intended to allow hardware to be accurately determined", but the intent may not be met, as there are frequent changes to hardware, firmware, and the "DMTF SMBIOS" standard.

BIOS HP U21 03/10/2016

Memory:

8x UNKNOWN NOT AVAILABLE

8x UNKNOWN NOT AVAILABLE 16 GB 2 rank 2400 MHz, configured at 1866 MHz

(End of data from sysinfo program)

Regarding the sysinfo display about the memory installed, the correct amount of memory is 128 GB and the dmidecode description should have one line reading as:
8x UNKNOWN NOT AVAILABLE 16 GB 2 rank 2400 MHz, configured at 1866 MHz

General Notes

Environment variables set by runspec before the start of the run:

KMP_AFFINITY = "granularity=fine,compact"

LD_LIBRARY_PATH = "/home/cpu2006/libs/32:/home/cpu2006/libs/64:/home/cpu2006/sh"

OMP_NUM_THREADS = "16"

Environment variables set by runspec before the start of the run:

LD_LIBRARY_PATH = "/cpu2006/libs/32:/cpu2006/libs/64:/cpu2006/sh"

Binaries compiled on a system with 1x Intel Xeon E5-2660 v4 CPU + 128GB memory using RedHat EL 7.2

Base Compiler Invocation

C benchmarks:

icc -m64

C++ benchmarks:

icpc -m64

Fortran benchmarks:

ifort -m64

Benchmarks using both Fortran and C:

icc -m64 ifort -m64



SPEC CFP2006 Result

Copyright 2006-2016 Standard Performance Evaluation Corporation

Hewlett Packard Enterprise

(Test Sponsor: HPE)

ProLiant XL450 Gen9

(1.70 GHz, Intel Xeon E5-2609 v4)

SPECfp2006 =

76.6

SPECfp_base2006 =

74.8

CPU2006 license: 3

Test sponsor: HPE

Tested by: HPE

Test date: Apr-2016

Hardware Availability: Mar-2016

Software Availability: Nov-2015

Base Portability Flags

```

410.bwaves: -DSPEC_CPU_LP64
416.gamess: -DSPEC_CPU_LP64
433.milc: -DSPEC_CPU_LP64
434.zeusmp: -DSPEC_CPU_LP64
435.gromacs: -DSPEC_CPU_LP64 -nofor_main
436.cactusADM: -DSPEC_CPU_LP64 -nofor_main
437.leslie3d: -DSPEC_CPU_LP64
444.namd: -DSPEC_CPU_LP64
447.deallI: -DSPEC_CPU_LP64
450.soplex: -DSPEC_CPU_LP64
453.povray: -DSPEC_CPU_LP64
454.calculix: -DSPEC_CPU_LP64 -nofor_main
459.GemsFDTD: -DSPEC_CPU_LP64
465.tonto: -DSPEC_CPU_LP64
470.lbm: -DSPEC_CPU_LP64
481.wrf: -DSPEC_CPU_LP64 -DSPEC_CPU_CASE_FLAG -DSPEC_CPU_LINUX
482.sphinx3: -DSPEC_CPU_LP64

```

Base Optimization Flags

C benchmarks:

```

-xCORE-AVX2 -ipo -O3 -no-prec-div -static -parallel -opt-prefetch
-ansi-alias -qopt-prefetch-issue-excl-hint

```

C++ benchmarks:

```

-xCORE-AVX2 -ipo -O3 -no-prec-div -static -opt-prefetch -ansi-alias

```

Fortran benchmarks:

```

-xCORE-AVX2 -ipo -O3 -no-prec-div -static -parallel -opt-prefetch
-fp-model fast=2
-qopt-prefetch-issue-excl-hint

```

Benchmarks using both Fortran and C:

```

-xCORE-AVX2 -ipo -O3 -no-prec-div -static -parallel -opt-prefetch
-ansi-alias -qopt-prefetch-issue-excl-hint
-fp-model fast=2

```

Peak Compiler Invocation

C benchmarks:

```

icc -m64

```

C++ benchmarks:

```

icpc -m64

```

Continued on next page



SPEC CFP2006 Result

Copyright 2006-2016 Standard Performance Evaluation Corporation

Hewlett Packard Enterprise

(Test Sponsor: HPE)

ProLiant XL450 Gen9

(1.70 GHz, Intel Xeon E5-2609 v4)

SPECfp2006 =

76.6

SPECfp_base2006 =

74.8

CPU2006 license: 3

Test sponsor: HPE

Tested by: HPE

Test date: Apr-2016

Hardware Availability: Mar-2016

Software Availability: Nov-2015

Peak Compiler Invocation (Continued)

Fortran benchmarks:

ifort -m64

Benchmarks using both Fortran and C:

icc -m64 ifort -m64

Peak Portability Flags

Same as Base Portability Flags

Peak Optimization Flags

C benchmarks:

433.milc: basepeak = yes

470.lbm: basepeak = yes

482.sphinx3: -xCORE-AVX2 -ipo -O3 -no-prec-div -static -parallel
-opt-prefetch -ansi-alias
-fp-model fast=2
-qopt-prefetch-issue-excl-hint -funroll-all-loops

-nofor-main

C++ benchmarks:

444.namd: -xCORE-AVX2(pass 2) -prof-gen:threadsafe(pass 1)
-ipo(pass 2) -O3(pass 2) -no-prec-div(pass 2)
-par-num-threads=1(pass 1) -prof-use(pass 2) -fno-alias
-auto-ilp32

447.dealIII: basepeak = yes

450.soplex: basepeak = yes

453.povray: -xCORE-AVX2(pass 2) -prof-gen:threadsafe(pass 1)
-ipo(pass 2) -O3(pass 2) -no-prec-div(pass 2)
-par-num-threads=1(pass 1) -prof-use(pass 2) -unroll4
-ansi-alias

Fortran benchmarks:

410.bwaves: -xCORE-AVX2 -ipo -O3 -no-prec-div -static -parallel
-opt-prefetch
-fp-model fast=2
-qopt-prefetch-issue-excl-hint -funroll-all-loops

Continued on next page



SPEC CFP2006 Result

Copyright 2006-2016 Standard Performance Evaluation Corporation

Hewlett Packard Enterprise

(Test Sponsor: HPE)

ProLiant XL450 Gen9

(1.70 GHz, Intel Xeon E5-2609 v4)

SPECfp2006 =

76.6

SPECfp_base2006 =

74.8

CPU2006 license: 3

Test sponsor: HPE

Tested by: HPE

Test date: Apr-2016

Hardware Availability: Mar-2016

Software Availability: Nov-2015

Peak Optimization Flags (Continued)

416.gamess: -xCORE-AVX2(pass 2) -prof-gen:threadsafe(pass 1)
-ipo(pass 2) -O3(pass 2) -no-prec-div(pass 2)
-par-num-threads=1(pass 1) -prof-use(pass 2) -unroll2
-inline-level=0 -scalar-rep-

434.zeusmp: basepeak = yes

437.leslie3d: basepeak = yes

459.GemsFDTD: -xCORE-AVX2(pass 2) -prof-gen:threadsafe(pass 1)
-ipo(pass 2) -O3(pass 2) -no-prec-div(pass 2)
-par-num-threads=1(pass 1) -prof-use(pass 2) -unroll2
-inline-level=0 -opt-prefetch -parallel

465.tonto: -xCORE-AVX2(pass 2) -prof-gen:threadsafe(pass 1)
-ipo(pass 2) -O3(pass 2) -no-prec-div(pass 2)
-par-num-threads=1(pass 1) -prof-use(pass 2) -inline-alloc
-opt-malloc-options=3 -auto -unroll4

Benchmarks using both Fortran and C:

435.gromacs: -xCORE-AVX2 -ipo -O3 -no-prec-div -static -parallel
-opt-prefetch -ansi-alias
-fp-model fast=2
-qopt-prefetch-issue-excl-hint -funroll-all-loops
-auto-ilp32

-nofor-main

436.cactusADM: basepeak = yes

454.calculix: -xCORE-AVX2 -ipo -O3 -no-prec-div -auto-ilp32 -ansi-alias

481.wrf: basepeak = yes

The flags files that were used to format this result can be browsed at

<http://www.spec.org/cpu2006/flags/HP-Compiler-Flags-Intel-V1.2-HSW-revF.html>

<http://www.spec.org/cpu2006/flags/HP-Platform-Flags-Intel-V1.2-HSW-revE.html>

You can also download the XML flags sources by saving the following links:

<http://www.spec.org/cpu2006/flags/HP-Compiler-Flags-Intel-V1.2-HSW-revF.xml>

<http://www.spec.org/cpu2006/flags/HP-Platform-Flags-Intel-V1.2-HSW-revE.xml>



SPEC CFP2006 Result

Copyright 2006-2016 Standard Performance Evaluation Corporation

Hewlett Packard Enterprise

(Test Sponsor: HPE)

ProLiant XL450 Gen9

(1.70 GHz, Intel Xeon E5-2609 v4)

SPECfp2006 =

76.6

SPECfp_base2006 =

74.8

CPU2006 license: 3

Test sponsor: HPE

Tested by: HPE

Test date: Apr-2016

Hardware Availability: Mar-2016

Software Availability: Nov-2015

SPEC and SPECfp are registered trademarks of the Standard Performance Evaluation Corporation. All other brand and product names appearing in this result are trademarks or registered trademarks of their respective holders.

For questions about this result, please contact the tester.
For other inquiries, please contact webmaster@spec.org.

Tested with SPEC CPU2006 v1.2.
Report generated on Wed Jun 1 19:11:08 2016 by SPEC CPU2006 PS/PDF formatter v6932.
Originally published on 1 June 2016.