



SPEC® CINT2006 Result

Copyright 2006-2016 Standard Performance Evaluation Corporation

Huawei

SPECint®2006 = 74.9

Huawei RH2288H V3 (Intel Xeon E5-2698 v4)

SPECint_base2006 = 72.5

CPU2006 license: 3175

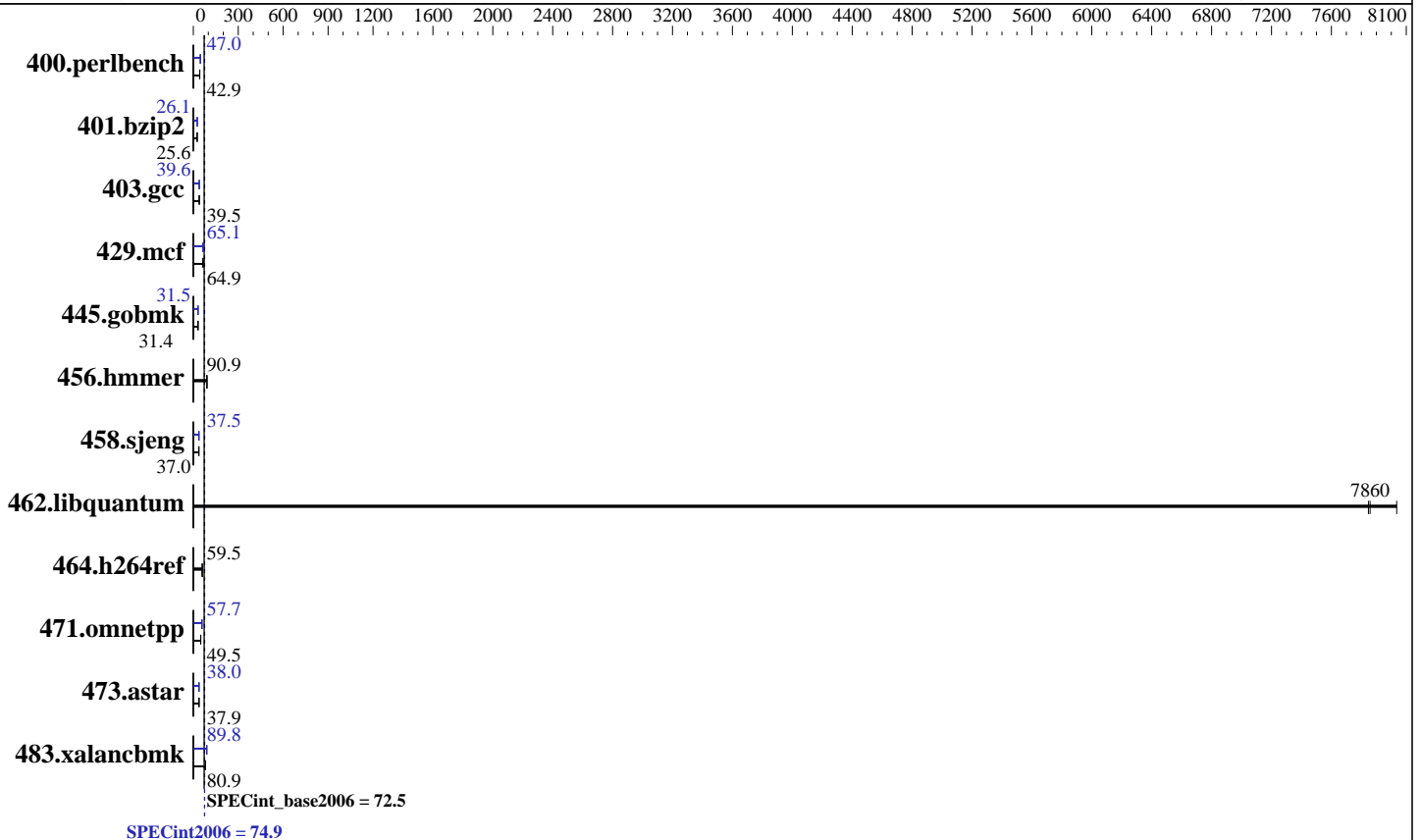
Test date: Nov-2016

Test sponsor: Huawei

Hardware Availability: Mar-2016

Tested by: Huawei

Software Availability: Nov-2015



Hardware

CPU Name: Intel Xeon E5-2698 v4
 CPU Characteristics: Intel Turbo Boost Technology up to 3.60 GHz
 CPU MHz: 2200
 FPU: Integrated
 CPU(s) enabled: 40 cores, 2 chips, 20 cores/chip
 CPU(s) orderable: 1,2 chip
 Primary Cache: 32 KB I + 32 KB D on chip per core
 Secondary Cache: 256 KB I+D on chip per core
 L3 Cache: 50 MB I+D on chip per chip
 Other Cache: None
 Memory: 512 GB (16 x 32 GB 2Rx4 PC4-2400T-R)
 Disk Subsystem: 1 x 1000 GB SATA, 7200 RPM
 Other Hardware: None

Software

Operating System: Red Hat Enterprise Linux Server release 7.2 (Maipo)
 3.10.0-327.el7.x86_64
 Compiler: C/C++: Version 16.0.0.101 of Intel C++ Studio XE for Linux
 Auto Parallel: Yes
 File System: xfs
 System State: Run level 3 (multi-user)
 Base Pointers: 32/64-bit
 Peak Pointers: 32/64-bit
 Other Software: Microquill SmartHeap V10.2



SPEC CINT2006 Result

Copyright 2006-2016 Standard Performance Evaluation Corporation

Huawei

SPECint2006 = 74.9

Huawei RH2288H V3 (Intel Xeon E5-2698 v4)

SPECint_base2006 = 72.5

CPU2006 license: 3175
Test sponsor: Huawei
Tested by: Huawei

Test date: Nov-2016
Hardware Availability: Mar-2016
Software Availability: Nov-2015

Results Table

Benchmark	Base						Peak					
	Seconds	Ratio	Seconds	Ratio	Seconds	Ratio	Seconds	Ratio	Seconds	Ratio	Seconds	Ratio
400.perlbench	<u>228</u>	<u>42.9</u>	228	42.9	228	42.8	<u>208</u>	<u>47.0</u>	208	46.9	208	47.0
401.bzip2	<u>378</u>	<u>25.6</u>	376	25.7	378	25.5	370	26.1	<u>369</u>	<u>26.1</u>	369	26.1
403.gcc	203	39.6	<u>204</u>	<u>39.5</u>	204	39.5	204	39.5	203	39.6	<u>204</u>	<u>39.6</u>
429.mcf	<u>141</u>	<u>64.9</u>	144	63.5	138	66.2	<u>140</u>	<u>65.1</u>	140	65.3	140	64.9
445.gobmk	334	31.4	334	31.4	<u>334</u>	<u>31.4</u>	<u>333</u>	<u>31.5</u>	333	31.5	333	31.5
456.hammer	103	91.0	<u>103</u>	<u>90.9</u>	103	90.6	103	91.0	<u>103</u>	<u>90.9</u>	103	90.6
458.sjeng	<u>327</u>	<u>37.0</u>	327	36.9	327	37.0	323	37.5	<u>323</u>	<u>37.5</u>	323	37.5
462.libquantum	2.58	8040	2.64	7850	<u>2.64</u>	<u>7860</u>	2.58	8040	2.64	7850	<u>2.64</u>	<u>7860</u>
464.h264ref	372	59.5	<u>372</u>	<u>59.5</u>	371	59.6	372	59.5	<u>372</u>	<u>59.5</u>	371	59.6
471.omnetpp	127	49.3	<u>126</u>	<u>49.5</u>	126	49.8	109	57.4	<u>108</u>	<u>57.7</u>	108	57.8
473.astar	186	37.8	<u>185</u>	<u>37.9</u>	185	38.0	185	37.9	<u>185</u>	<u>38.0</u>	184	38.1
483.xalancbmk	85.5	80.7	<u>85.3</u>	<u>80.9</u>	85.2	81.0	76.7	90.0	76.9	89.7	<u>76.8</u>	<u>89.8</u>

Results appear in the order in which they were run. Bold underlined text indicates a median measurement.

Submit Notes

The config file option 'submit' was used.

Operating System Notes

Stack size set to unlimited using "ulimit -s unlimited"

Platform Notes

BIOS configuration:
Set Power Efficiency Mode to Custom
Set Snoop Mode to ES mode
Set Patrol Scrub to Disable
Set Hyper-Threading to Disable
Sysinfo program /spec16/config/sysinfo.rev6914
\$Rev: 6914 \$ \$Date:: 2014-06-25 # \$ e3fbb8667b5a285932ceab81e28219e1
running on localhost.localdomain Tue Nov 22 12:25:30 2016

This section contains SUT (System Under Test) info as seen by some common utilities. To remove or add to this section, see: <http://www.spec.org/cpu2006/Docs/config.html#sysinfo>

```
From /proc/cpuinfo
model name : Intel(R) Xeon(R) CPU E5-2698 v4 @ 2.20GHz
2 "physical id"s (chips)
40 "processors"
cores, siblings (Caution: counting these is hw and system dependent. The
following excerpts from /proc/cpuinfo might not be reliable. Use with
Continued on next page
```



SPEC CINT2006 Result

Copyright 2006-2016 Standard Performance Evaluation Corporation

Huawei

SPECint2006 = 74.9

Huawei RH2288H V3 (Intel Xeon E5-2698 v4)

SPECint_base2006 = 72.5

CPU2006 license: 3175

Test sponsor: Huawei

Tested by: Huawei

Test date: Nov-2016

Hardware Availability: Mar-2016

Software Availability: Nov-2015

Platform Notes (Continued)

```

caution.)
  cpu cores : 20
  siblings  : 20
  physical 0: cores 0 1 2 3 4 8 9 10 11 12 16 17 18 19 20 24 25 26 27 28
  physical 1: cores 0 1 2 3 4 8 9 10 11 12 16 17 18 19 20 24 25 26 27 28
cache size : 51200 KB

```

```

From /proc/meminfo
MemTotal:      527791624 kB
HugePages_Total:      0
Hugepagesize:    2048 kB

```

```

From /etc/*release* /etc/*version*
os-release:
NAME="Red Hat Enterprise Linux Server"
VERSION="7.2 (Maipo)"
ID="rhel"
ID_LIKE="fedora"
VERSION_ID="7.2"
PRETTY_NAME="Red Hat Enterprise Linux Server 7.2 (Maipo)"
ANSI_COLOR="0;31"
CPE_NAME="cpe:/o:redhat:enterprise_linux:7.2:GA:server"
redhat-release: Red Hat Enterprise Linux Server release 7.2 (Maipo)
system-release: Red Hat Enterprise Linux Server release 7.2 (Maipo)
system-release-cpe: cpe:/o:redhat:enterprise_linux:7.2:ga:server

```

```

uname -a:
Linux localhost.localdomain 3.10.0-327.el7.x86_64 #1 SMP Thu Oct 29 17:29:29
EDT 2015 x86_64 x86_64 x86_64 GNU/Linux

```

run-level 3 Nov 22 12:23

```

SPEC is set to: /spec16
Filesystem      Type  Size  Used Avail Use% Mounted on
/dev/sda2        xfs   254G   32G  223G  13% /

```

Additional information from dmidecode:

Warning: Use caution when you interpret this section. The 'dmidecode' program reads system data which is "intended to allow hardware to be accurately determined", but the intent may not be met, as there are frequent changes to hardware, firmware, and the "DMTF SMBIOS" standard.

```

BIOS Insyde Corp. 3.32 09/14/2016
Memory:
16x Micron 36ASF4G72PZ-2G3A1 32 GB 2 rank 2400 MHz
8x NO DIMM NO DIMM

```

(End of data from sysinfo program)



SPEC CINT2006 Result

Copyright 2006-2016 Standard Performance Evaluation Corporation

Huawei

SPECint2006 = 74.9

Huawei RH2288H V3 (Intel Xeon E5-2698 v4)

SPECint_base2006 = 72.5

CPU2006 license: 3175

Test date: Nov-2016

Test sponsor: Huawei

Hardware Availability: Mar-2016

Tested by: Huawei

Software Availability: Nov-2015

General Notes

Environment variables set by runspec before the start of the run:

```
KMP_AFFINITY = "granularity=fine,compact,1,0"
LD_LIBRARY_PATH = "/spec16/libs/32:/spec16/libs/64:/spec16/sh"
OMP_NUM_THREADS = "40"
```

Binaries compiled on a system with 1x Intel Core i5-4670K CPU + 32GB memory using RedHat EL 7.1

Transparent Huge Pages enabled with:
echo always > /sys/kernel/mm/transparent_hugepage/enabled
runspec command invoked through numactl i.e.:
numactl --interleave=all runspec <etc>

Base Compiler Invocation

C benchmarks:
icc -m64

C++ benchmarks:
icpc -m64

Base Portability Flags

```
400.perlbench: -DSPEC_CPU_LP64 -DSPEC_CPU_LINUX_X64
401.bzip2: -DSPEC_CPU_LP64
403.gcc: -DSPEC_CPU_LP64
429.mcf: -DSPEC_CPU_LP64
445.gobmk: -DSPEC_CPU_LP64
456.hmmer: -DSPEC_CPU_LP64
458.sjeng: -DSPEC_CPU_LP64
462.libquantum: -DSPEC_CPU_LP64 -DSPEC_CPU_LINUX
464.h264ref: -DSPEC_CPU_LP64
471.omnetpp: -DSPEC_CPU_LP64
473.astar: -DSPEC_CPU_LP64
483.xalancbmk: -DSPEC_CPU_LP64 -DSPEC_CPU_LINUX
```

Base Optimization Flags

C benchmarks:
-xCORE-AVX2 -ipo -O3 -no-prec-div -parallel -opt-prefetch -auto-p32

C++ benchmarks:
-xCORE-AVX2 -ipo -O3 -no-prec-div -opt-prefetch -auto-p32
-Wl,-z,muldefs -L/sh -lsmartheap64



SPEC CINT2006 Result

Copyright 2006-2016 Standard Performance Evaluation Corporation

Huawei

SPECint2006 = 74.9

Huawei RH2288H V3 (Intel Xeon E5-2698 v4)

SPECint_base2006 = 72.5

CPU2006 license: 3175
Test sponsor: Huawei
Tested by: Huawei

Test date: Nov-2016
Hardware Availability: Mar-2016
Software Availability: Nov-2015

Base Other Flags

C benchmarks:

403.gcc: -Dalloca=_alloca

Peak Compiler Invocation

C benchmarks (except as noted below):

icc -m64

400.perlbench: icc -m32 -L/opt/intel/compilers_and_libraries_2016/linux/compiler/lib/ia32_lin

445.gobmk: icc -m32 -L/opt/intel/compilers_and_libraries_2016/linux/compiler/lib/ia32_lin

C++ benchmarks (except as noted below):

icpc -m32 -L/opt/intel/compilers_and_libraries_2016/linux/compiler/lib/ia32_lin

473.astar: icpc -m64

Peak Portability Flags

400.perlbench: -D_FILE_OFFSET_BITS=64 -DSPEC_CPU_LINUX_IA32

401.bzip2: -DSPEC_CPU_LP64

403.gcc: -DSPEC_CPU_LP64

429.mcf: -DSPEC_CPU_LP64

445.gobmk: -D_FILE_OFFSET_BITS=64

456.hmmmer: -DSPEC_CPU_LP64

458.sjeng: -DSPEC_CPU_LP64

462.libquantum: -DSPEC_CPU_LP64 -DSPEC_CPU_LINUX

464.h264ref: -DSPEC_CPU_LP64

471.omnetpp: -D_FILE_OFFSET_BITS=64

473.astar: -DSPEC_CPU_LP64

483.xalancbmk: -D_FILE_OFFSET_BITS=64 -DSPEC_CPU_LINUX

Peak Optimization Flags

C benchmarks:

400.perlbench: -xCORE-AVX2(pass 2) -prof-gen:threadsafe(pass 1)
-ipo(pass 2) -O3(pass 2) -no-prec-div(pass 2)
-par-num-threads=1(pass 1) -prof-use(pass 2) -opt-prefetch
-ansi-alias

401.bzip2: -xCORE-AVX2(pass 2) -prof-gen:threadsafe(pass 1)
-ipo(pass 2) -O3(pass 2) -no-prec-div
-par-num-threads=1(pass 1) -prof-use(pass 2) -auto-ilp32

Continued on next page



SPEC CINT2006 Result

Copyright 2006-2016 Standard Performance Evaluation Corporation

Huawei

SPECint2006 = 74.9

Huawei RH2288H V3 (Intel Xeon E5-2698 v4)

SPECint_base2006 = 72.5

CPU2006 license: 3175

Test date: Nov-2016

Test sponsor: Huawei

Hardware Availability: Mar-2016

Tested by: Huawei

Software Availability: Nov-2015

Peak Optimization Flags (Continued)

401.bzip2 (continued):

-opt-prefetch -ansi-alias

403.gcc: -xCORE-AVX2 -ipo -O3 -no-prec-div -inline-calloc

-opt-malloc-options=3 -auto-ilp32

429.mcf: -xCORE-AVX2 -ipo -O3 -no-prec-div -parallel

-opt-prefetch -auto-p32

445.gobmk: -xCORE-AVX2(pass 2) -prof-gen:threadsafe(pass 1)

-prof-use(pass 2) -par-num-threads=1(pass 1) -ansi-alias

456.hmmcr: basepeak = yes

458.sjeng: -xCORE-AVX2(pass 2) -prof-gen:threadsafe(pass 1)

-ipo(pass 2) -O3(pass 2) -no-prec-div(pass 2)

-par-num-threads=1(pass 1) -prof-use(pass 2) -unroll4

462.libquantum: basepeak = yes

464.h264ref: basepeak = yes

C++ benchmarks:

471.omnetpp: -xCORE-AVX2(pass 2) -prof-gen:threadsafe(pass 1)

-ipo(pass 2) -O3(pass 2) -no-prec-div(pass 2)

-par-num-threads=1(pass 1) -prof-use(pass 2)

-opt-ra-region-strategy=block

-ansi-alias

-Wl,-z,muldefs -L/sh -lsmartheap

473.astar: -xCORE-AVX2 -ipo -O3 -no-prec-div -opt-prefetch

-auto-p32 -Wl,-z,muldefs -L/sh -lsmartheap64

483.xalancbmk: -xCORE-AVX2 -ipo -O3 -no-prec-div -opt-prefetch

-ansi-alias -Wl,-z,muldefs -L/sh -lsmartheap

Peak Other Flags

C benchmarks:

403.gcc: -Dalloca=_alloca

The flags files that were used to format this result can be browsed at

<http://www.spec.org/cpu2006/flags/Intel-ic16.0-official-linux64.html>

<http://www.spec.org/cpu2006/flags/Huawei-Platform-Settings-BDW-V1.0.html>



SPEC CINT2006 Result

Copyright 2006-2016 Standard Performance Evaluation Corporation

Huawei

SPECint2006 = 74.9

Huawei RH2288H V3 (Intel Xeon E5-2698 v4)

SPECint_base2006 = 72.5

CPU2006 license: 3175

Test sponsor: Huawei

Tested by: Huawei

Test date: Nov-2016

Hardware Availability: Mar-2016

Software Availability: Nov-2015

You can also download the XML flags sources by saving the following links:

<http://www.spec.org/cpu2006/flags/Intel-ic16.0-official-linux64.xml>

<http://www.spec.org/cpu2006/flags/Huawei-Platform-Settings-BDW-V1.0.xml>

SPEC and SPECint are registered trademarks of the Standard Performance Evaluation Corporation. All other brand and product names appearing in this result are trademarks or registered trademarks of their respective holders.

For questions about this result, please contact the tester.
For other inquiries, please contact webmaster@spec.org.

Tested with SPEC CPU2006 v1.2.
Report generated on Thu Dec 15 11:16:11 2016 by SPEC CPU2006 PS/PDF formatter v6932.
Originally published on 13 December 2016.