



SPEC® CINT2006 Result

Copyright 2006-2017 Standard Performance Evaluation Corporation

Huawei

SPECint®2006 = 75.5

Huawei CH121 V3 (Intel Xeon E5-2699A v4)

SPECint_base2006 = 72.8

CPU2006 license: 3175

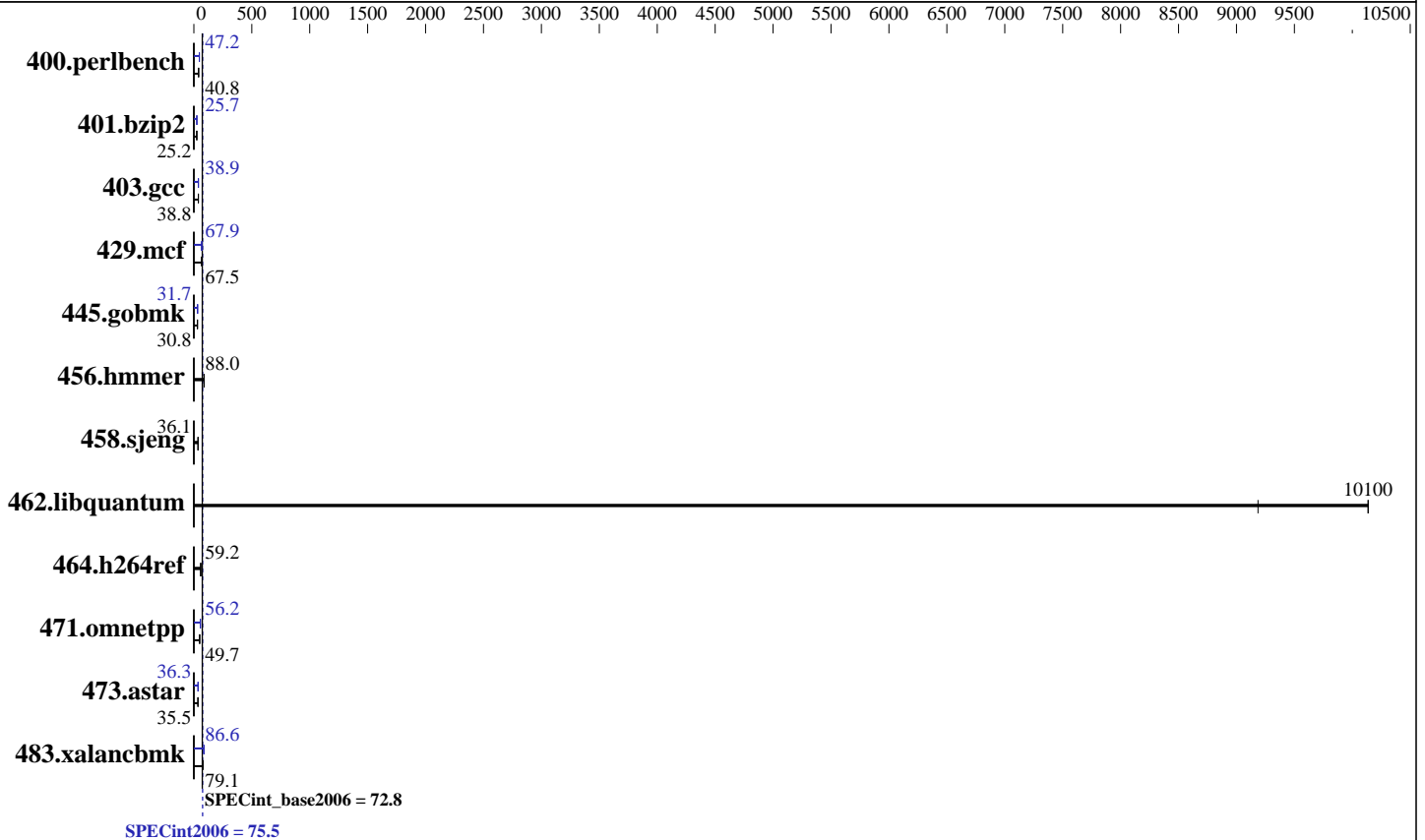
Test sponsor: Huawei

Tested by: Huawei

Test date: Jun-2017

Hardware Availability: Apr-2016

Software Availability: Sep-2016



Hardware

CPU Name: Intel Xeon E5-2699A v4
 CPU Characteristics: Intel Turbo Boost Technology up to 3.60 GHz
 CPU MHz: 2400
 FPU: Integrated
 CPU(s) enabled: 44 cores, 2 chips, 22 cores/chip
 CPU(s) orderable: 1,2 chip
 Primary Cache: 32 KB I + 32 KB D on chip per core
 Secondary Cache: 256 KB I+D on chip per core
 L3 Cache: 55 MB I+D on chip per chip
 Other Cache: None
 Memory: 256 GB (16 x 16 GB 2Rx8 PC4-2400T-R)
 Disk Subsystem: 1 x 1000 GB SATA, 7200 RPM
 Other Hardware: None

Software

Operating System: Red Hat Enterprise Linux Server release 7.2 (Maipo)
 Compiler: 3.10.0-327.el7.x86_64 C/C++: Version 17.0.0.098 of Intel C/C++ Compiler for Linux
 Auto Parallel: Yes
 File System: xfs
 System State: Run level 3 (multi-user)
 Base Pointers: 32/64-bit
 Peak Pointers: 32/64-bit
 Other Software: Microquill SmartHeap V10.2



SPEC CINT2006 Result

Copyright 2006-2017 Standard Performance Evaluation Corporation

Huawei

SPECint2006 = **75.5**

Huawei CH121 V3 (Intel Xeon E5-2699A v4)

SPECint_base2006 = **72.8**

CPU2006 license: 3175
Test sponsor: Huawei
Tested by: Huawei

Test date: Jun-2017
Hardware Availability: Apr-2016
Software Availability: Sep-2016

Results Table

Benchmark	Base						Peak					
	Seconds	Ratio	Seconds	Ratio	Seconds	Ratio	Seconds	Ratio	Seconds	Ratio	Seconds	Ratio
400.perlbench	239	40.9	<u>239</u>	<u>40.8</u>	240	40.7	<u>207</u>	<u>47.2</u>	207	47.3	<u>207</u>	<u>47.2</u>
401.bzip2	<u>383</u>	<u>25.2</u>	382	25.3	383	25.2	<u>376</u>	<u>25.7</u>	376	25.7	376	25.7
403.gcc	<u>208</u>	<u>38.8</u>	207	38.8	208	38.8	206	39.0	<u>207</u>	<u>38.9</u>	207	38.9
429.mcf	<u>135</u>	<u>67.5</u>	137	66.7	134	68.1	134	68.3	135	67.5	<u>134</u>	<u>67.9</u>
445.gobmk	339	30.9	341	30.7	<u>341</u>	<u>30.8</u>	331	31.7	<u>330</u>	<u>31.7</u>	330	31.8
456.hmmer	106	88.1	<u>106</u>	<u>88.0</u>	106	87.9	106	88.1	<u>106</u>	<u>88.0</u>	106	87.9
458.sjeng	335	36.1	<u>335</u>	<u>36.1</u>	335	36.1	335	36.1	<u>335</u>	<u>36.1</u>	335	36.1
462.libquantum	2.26	9190	2.04	10100	<u>2.04</u>	<u>10100</u>	2.26	9190	2.04	10100	<u>2.04</u>	<u>10100</u>
464.h264ref	373	59.4	<u>374</u>	<u>59.2</u>	375	59.0	373	59.4	<u>374</u>	<u>59.2</u>	375	59.0
471.omnetpp	<u>126</u>	<u>49.7</u>	126	49.6	124	50.2	112	56.0	111	56.5	<u>111</u>	<u>56.2</u>
473.astar	197	35.5	200	35.1	<u>198</u>	<u>35.5</u>	194	36.2	193	36.4	<u>194</u>	<u>36.3</u>
483.xalancbmk	86.9	79.4	<u>87.2</u>	<u>79.1</u>	87.3	79.1	<u>79.5</u>	<u>86.8</u>	<u>79.8</u>	<u>86.5</u>	<u>79.6</u>	<u>86.6</u>

Results appear in the order in which they were run. Bold underlined text indicates a median measurement.

Submit Notes

The config file option 'submit' was used.

Operating System Notes

Stack size set to unlimited using "ulimit -s unlimited"

Platform Notes

```

BIOS configuration:
Set Power Efficiency Mode to Custom
Set Snoop Mode to ES mode
Set Patrol Scrub to Disable
Set Hyper-Threading to Disable
Sysinfo program /spec17/config/sysinfo.rev6993
Revision 6993 of 2015-11-06 (b5e8d4b4eb51ed28d7f98696cbe290c1)
running on localhost.localdomain Thu Jun 1 18:45:28 2017

```

This section contains SUT (System Under Test) info as seen by some common utilities. To remove or add to this section, see: <http://www.spec.org/cpu2006/Docs/config.html#sysinfo>

```

From /proc/cpuinfo
model name : Intel(R) Xeon(R) CPU E5-2699A v4 @ 2.40GHz
2 "physical id"s (chips)
44 "processors"
cores, siblings (Caution: counting these is hw and system dependent. The
following excerpts from /proc/cpuinfo might not be reliable. Use with
Continued on next page

```



SPEC CINT2006 Result

Copyright 2006-2017 Standard Performance Evaluation Corporation

Huawei

SPECint2006 = 75.5

Huawei CH121 V3 (Intel Xeon E5-2699A v4)

SPECint_base2006 = 72.8

CPU2006 license: 3175

Test sponsor: Huawei

Tested by: Huawei

Test date: Jun-2017

Hardware Availability: Apr-2016

Software Availability: Sep-2016

Platform Notes (Continued)

```

caution.)
  cpu cores : 22
  siblings  : 22
  physical 0: cores 0 1 2 3 4 5 8 9 10 11 12 16 17 18 19 20 21 24 25 26 27
                28
  physical 1: cores 0 1 2 3 4 5 8 9 10 11 12 16 17 18 19 20 21 24 25 26 27
                28
  cache size : 56320 KB

```

```

From /proc/meminfo
MemTotal:      263566508 kB
HugePages_Total:      0
Hugepagesize:    2048 kB

```

```

From /etc/*release* /etc/*version*
os-release:
NAME="Red Hat Enterprise Linux Server"
VERSION="7.2 (Maipo)"
ID="rhel"
ID_LIKE="fedora"
VERSION_ID="7.2"
PRETTY_NAME="Red Hat Enterprise Linux Server 7.2 (Maipo)"
ANSI_COLOR="0;31"
CPE_NAME="cpe:/o:redhat:enterprise_linux:7.2:GA:server"
redhat-release: Red Hat Enterprise Linux Server release 7.2 (Maipo)
system-release: Red Hat Enterprise Linux Server release 7.2 (Maipo)
system-release-cpe: cpe:/o:redhat:enterprise_linux:7.2:ga:server

```

```

uname -a:
Linux localhost.localdomain 3.10.0-327.el7.x86_64 #1 SMP Thu Oct 29 17:29:29
EDT 2015 x86_64 x86_64 x86_64 GNU/Linux

```

run-level 3 Jun 1 18:45

```

SPEC is set to: /spec17
Filesystem      Type  Size  Used Avail Use% Mounted on
/dev/sda2       xfs   254G   68G  187G  27% /

```

Additional information from dmidecode:

Warning: Use caution when you interpret this section. The 'dmidecode' program reads system data which is "intended to allow hardware to be accurately determined", but the intent may not be met, as there are frequent changes to hardware, firmware, and the "DMTF SMBIOS" standard.

BIOS Insyde Corp. 3.32 09/14/2016

Memory:

8x NO DIMM NO DIMM

16x Samsung M393A2K43BB1-CRC 16 GB 2 rank 2400 MHz

(End of data from sysinfo program)



SPEC CINT2006 Result

Copyright 2006-2017 Standard Performance Evaluation Corporation

Huawei

SPECint2006 = 75.5

Huawei CH121 V3 (Intel Xeon E5-2699A v4)

SPECint_base2006 = 72.8

CPU2006 license: 3175

Test sponsor: Huawei

Tested by: Huawei

Test date: Jun-2017

Hardware Availability: Apr-2016

Software Availability: Sep-2016

General Notes

Environment variables set by runspec before the start of the run:
KMP_AFFINITY = "granularity=fine,compact"
LD_LIBRARY_PATH = "/spec17/libs/32:/spec17/libs/64:/spec17/sh10.2"
OMP_NUM_THREADS = "44"

Binaries compiled on a system with 1x Intel Core i7-4790 CPU + 32GB RAM memory using Redhat Enterprise Linux 7.2
Transparent Huge Pages enabled with:
echo always > /sys/kernel/mm/transparent_hugepage/enabled
runspec command invoked through numactl i.e.:
numactl --interleave=all runspec <etc>

Base Compiler Invocation

C benchmarks:
icc -m64

C++ benchmarks:
icpc -m64

Base Portability Flags

400.perlbench: -DSPEC_CPU_LP64 -DSPEC_CPU_LINUX_X64
401.bzip2: -DSPEC_CPU_LP64
403.gcc: -DSPEC_CPU_LP64
429.mcf: -DSPEC_CPU_LP64
445.gobmk: -DSPEC_CPU_LP64
456.hmmer: -DSPEC_CPU_LP64
458.sjeng: -DSPEC_CPU_LP64
462.libquantum: -DSPEC_CPU_LP64 -DSPEC_CPU_LINUX
464.h264ref: -DSPEC_CPU_LP64
471.omnetpp: -DSPEC_CPU_LP64
473.astar: -DSPEC_CPU_LP64
483.xalancbmk: -DSPEC_CPU_LP64 -DSPEC_CPU_LINUX

Base Optimization Flags

C benchmarks:
-xCORE-AVX2 -ipo -O3 -no-prec-div -parallel -qopt-prefetch
-auto-p32

C++ benchmarks:
-xCORE-AVX2 -ipo -O3 -no-prec-div -qopt-prefetch -auto-p32
-Wl,-z,muldefs -L/sh10.2 -lsmartheap64



SPEC CINT2006 Result

Copyright 2006-2017 Standard Performance Evaluation Corporation

Huawei

SPECint2006 = 75.5

Huawei CH121 V3 (Intel Xeon E5-2699A v4)

SPECint_base2006 = 72.8

CPU2006 license: 3175
Test sponsor: Huawei
Tested by: Huawei

Test date: Jun-2017
Hardware Availability: Apr-2016
Software Availability: Sep-2016

Base Other Flags

C benchmarks:

403.gcc: -Dalloca=_alloca

Peak Compiler Invocation

C benchmarks (except as noted below):

icc -m64

400.perlbench: icc -m32 -L/opt/intel/compilers_and_libraries_2017/linux/lib/ia32

445.gobmk: icc -m32 -L/opt/intel/compilers_and_libraries_2017/linux/lib/ia32

C++ benchmarks (except as noted below):

icc -m32 -L/opt/intel/compilers_and_libraries_2017/linux/lib/ia32

473.astar: icpc -m64

Peak Portability Flags

400.perlbench: -D_FILE_OFFSET_BITS=64 -DSPEC_CPU_LINUX_IA32

401.bzip2: -DSPEC_CPU_LP64

403.gcc: -DSPEC_CPU_LP64

429.mcf: -DSPEC_CPU_LP64

445.gobmk: -D_FILE_OFFSET_BITS=64

456.hmmmer: -DSPEC_CPU_LP64

458.sjeng: -DSPEC_CPU_LP64

462.libquantum: -DSPEC_CPU_LP64 -DSPEC_CPU_LINUX

464.h264ref: -DSPEC_CPU_LP64

471.omnetpp: -D_FILE_OFFSET_BITS=64

473.astar: -DSPEC_CPU_LP64

483.xalancbmk: -D_FILE_OFFSET_BITS=64 -DSPEC_CPU_LINUX

Peak Optimization Flags

C benchmarks:

400.perlbench: -prof-gen(pass 1) -prof-use(pass 2) -xCORE-AVX2(pass 2)
-par-num-threads=1(pass 1) -ipo(pass 2) -O3(pass 2)
-no-prec-div(pass 2) -qopt-prefetch

401.bzip2: -prof-gen(pass 1) -prof-use(pass 2) -xCORE-AVX2(pass 2)
-par-num-threads=1(pass 1) -ipo(pass 2) -O3(pass 2)
-no-prec-div -auto-ilp32 -qopt-prefetch

Continued on next page



SPEC CINT2006 Result

Copyright 2006-2017 Standard Performance Evaluation Corporation

Huawei

SPECint2006 = 75.5

Huawei CH121 V3 (Intel Xeon E5-2699A v4)

SPECint_base2006 = 72.8

CPU2006 license: 3175

Test date: Jun-2017

Test sponsor: Huawei

Hardware Availability: Apr-2016

Tested by: Huawei

Software Availability: Sep-2016

Peak Optimization Flags (Continued)

403.gcc: -xCORE-AVX2 -ipo -O3 -no-prec-div -inline-calloc
-qopt-malloc-options=3 -auto-ilp32

429.mcf: -xCORE-AVX2 -ipo -O3 -no-prec-div -parallel
-qopt-prefetch -auto-p32

445.gobmk: -prof-gen(pass 1) -prof-use(pass 2) -xCORE-AVX2(pass 2)
-par-num-threads=1(pass 1) -ipo(pass 2) -O3(pass 2)
-no-prec-div(pass 2)

456.hmmcr: basepeak = yes

458.sjeng: basepeak = yes

462.libquantum: basepeak = yes

464.h264ref: basepeak = yes

C++ benchmarks:

471.omnetpp: -prof-gen(pass 1) -prof-use(pass 2) -xCORE-AVX2(pass 2)
-par-num-threads=1(pass 1) -ipo(pass 2) -O3(pass 2)
-no-prec-div(pass 2) -qopt-ra-region-strategy=block
-Wl,-z,muldefs -L/sh10.2 -lsmarheap

473.astar: -xCORE-AVX2 -ipo -O3 -no-prec-div -qopt-prefetch
-auto-p32 -Wl,-z,muldefs -L/sh10.2 -lsmarheap64

483.xalancbmk: -xCORE-AVX2 -ipo -O3 -no-prec-div -qopt-prefetch
-Wl,-z,muldefs -L/sh10.2 -lsmarheap

Peak Other Flags

C benchmarks:

403.gcc: -Dalloca=_alloca

The flags files that were used to format this result can be browsed at

<http://www.spec.org/cpu2006/flags/Intel-ic17.0-official-linux64.html>

<http://www.spec.org/cpu2006/flags/Huawei-Platform-Settings-BDW-V1.0.html>

You can also download the XML flags sources by saving the following links:

<http://www.spec.org/cpu2006/flags/Intel-ic17.0-official-linux64.xml>

<http://www.spec.org/cpu2006/flags/Huawei-Platform-Settings-BDW-V1.0.xml>



SPEC CINT2006 Result

Copyright 2006-2017 Standard Performance Evaluation Corporation

Huawei

SPECint2006 = 75.5

Huawei CH121 V3 (Intel Xeon E5-2699A v4)

SPECint_base2006 = 72.8

CPU2006 license: 3175

Test sponsor: Huawei

Tested by: Huawei

Test date: Jun-2017

Hardware Availability: Apr-2016

Software Availability: Sep-2016

SPEC and SPECint are registered trademarks of the Standard Performance Evaluation Corporation. All other brand and product names appearing in this result are trademarks or registered trademarks of their respective holders.

For questions about this result, please contact the tester.
For other inquiries, please contact webmaster@spec.org.

Tested with SPEC CPU2006 v1.2.
Report generated on Tue Jun 27 17:13:53 2017 by SPEC CPU2006 PS/PDF formatter v6932.
Originally published on 27 June 2017.