



SPEC[®] CINT2006 Result

Copyright 2006-2017 Standard Performance Evaluation Corporation

Dell Inc.

SPECint[®]_rate2006 = 1030

PowerEdge C6420 (Intel Xeon Gold 6134, 3.20 GHz)

SPECint_rate_base2006 = 979

CPU2006 license: 55

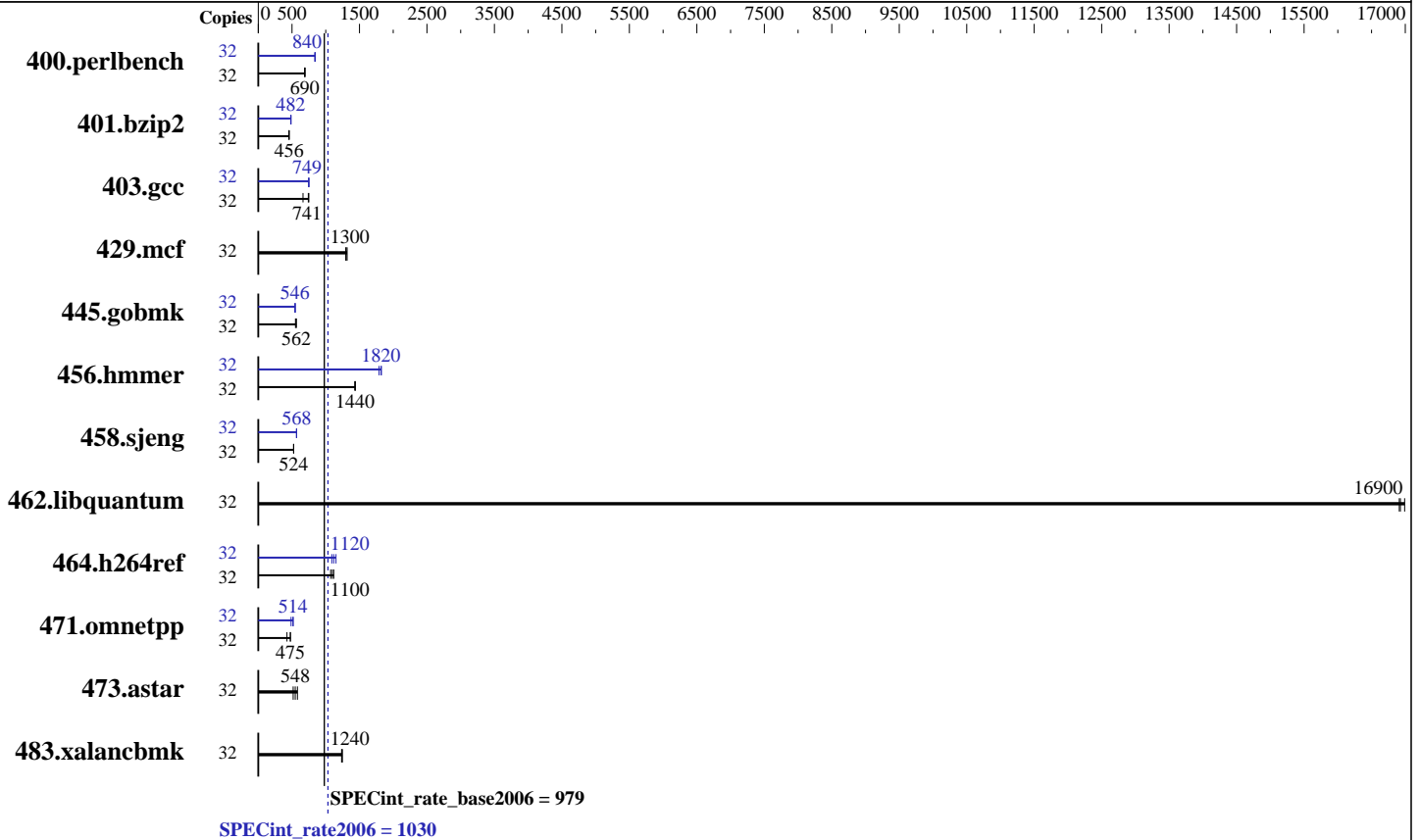
Test date: Jun-2017

Test sponsor: Dell Inc.

Hardware Availability: Jul-2017

Tested by: Dell Inc.

Software Availability: Nov-2016



Hardware

CPU Name: Intel Xeon Gold 6134
 CPU Characteristics: Intel Turbo Boost Technology up to 3.70 GHz
 CPU MHz: 3200
 FPU: Integrated
 CPU(s) enabled: 16 cores, 2 chips, 8 cores/chip, 2 threads/core
 CPU(s) orderable: 1,2 chip
 Primary Cache: 32 KB I + 32 KB D on chip per core
 Secondary Cache: 1 MB I+D on chip per core
 L3 Cache: 24.75 MB I+D on chip per chip
 Other Cache: None
 Memory: 192 GB (12 x 16 GB 2Rx8 PC4-2666V-R)
 Disk Subsystem: 1 x 960 GB SATA SSD
 Other Hardware: None

Software

Operating System: SUSE Linux Enterprise Server 12 SP2 (x86_64) 4.4.21-69-default
 Compiler: C/C++: Version 17.0.3.191 of Intel C/C++ Compiler for Linux
 Auto Parallel: Yes
 File System: xfs
 System State: Run level 3 (multi-user)
 Base Pointers: 32-bit
 Peak Pointers: 32/64-bit
 Other Software: Microquill SmartHeap V10.2



SPEC CINT2006 Result

Copyright 2006-2017 Standard Performance Evaluation Corporation

Dell Inc.

SPECint_rate2006 = 1030

PowerEdge C6420 (Intel Xeon Gold 6134, 3.20 GHz)

SPECint_rate_base2006 = 979

CPU2006 license: 55

Test date: Jun-2017

Test sponsor: Dell Inc.

Hardware Availability: Jul-2017

Tested by: Dell Inc.

Software Availability: Nov-2016

Results Table

Benchmark	Base							Peak						
	Copies	Seconds	Ratio	Seconds	Ratio	Seconds	Ratio	Copies	Seconds	Ratio	Seconds	Ratio	Seconds	Ratio
400.perlbench	32	455	687	<u>453</u>	<u>690</u>	451	693	32	371	843	<u>372</u>	<u>840</u>	372	840
401.bzip2	32	677	456	678	456	<u>678</u>	<u>456</u>	32	641	482	<u>640</u>	<u>482</u>	636	486
403.gcc	32	<u>347</u>	<u>741</u>	389	663	344	749	32	344	749	345	747	<u>344</u>	<u>749</u>
429.mcf	32	222	1320	225	1300	<u>224</u>	<u>1300</u>	32	222	1320	225	1300	<u>224</u>	<u>1300</u>
445.gobmk	32	609	551	<u>598</u>	<u>562</u>	596	563	32	616	545	<u>615</u>	<u>546</u>	614	547
456.hammer	32	<u>208</u>	<u>1440</u>	209	1430	208	1440	32	164	1830	<u>164</u>	<u>1820</u>	167	1790
458.sjeng	32	740	523	<u>738</u>	<u>524</u>	738	525	32	684	566	<u>682</u>	<u>568</u>	681	568
462.libquantum	32	39.2	16900	<u>39.2</u>	<u>16900</u>	39.0	17000	32	39.2	16900	<u>39.2</u>	<u>16900</u>	39.0	17000
464.h264ref	32	633	1120	<u>645</u>	<u>1100</u>	660	1070	32	615	1150	650	1090	<u>633</u>	<u>1120</u>
471.omnetpp	32	<u>421</u>	<u>475</u>	420	476	470	425	32	386	518	412	486	<u>389</u>	<u>514</u>
473.astar	32	387	580	434	517	<u>410</u>	<u>548</u>	32	387	580	434	517	<u>410</u>	<u>548</u>
483.xalancbmk	32	177	1250	179	1230	<u>178</u>	<u>1240</u>	32	177	1250	179	1230	<u>178</u>	<u>1240</u>

Results appear in the order in which they were run. Bold underlined text indicates a median measurement.

Submit Notes

The numactl mechanism was used to bind copies to processors. The config file option 'submit' was used to generate numactl commands to bind each copy to a specific processor. For details, please see the config file.

Operating System Notes

Stack size set to unlimited using "ulimit -s unlimited"

Platform Notes

BIOS settings:
 Sub NUMA Cluster enabled
 Virtualization Technology disabled
 System Profile set to Custom
 CPU Performance set to Maximum Performance
 C States set to autonomous
 C1E disabled
 Uncore Frequency set to Dynamic
 Energy Efficiency Policy set to Performance
 Memory Patrol Scrub disabled
 Logical Processor enabled
 CPU Interconnect Bus Link Power Management disabled
 PCI ASPM L1 Link Power Management disabled
 Sysinfo program /root/cpu2006-1.2_ic17u3/config/sysinfo.rev6993
 Revision 6993 of 2015-11-06 (b5e8d4b4eb51ed28d7f98696cbe290c1)
 running on linux-xp0h Thu Jun 29 02:51:03 2017

Continued on next page



SPEC CINT2006 Result

Copyright 2006-2017 Standard Performance Evaluation Corporation

Dell Inc.

SPECint_rate2006 = 1030

PowerEdge C6420 (Intel Xeon Gold 6134, 3.20 GHz)

SPECint_rate_base2006 = 979

CPU2006 license: 55

Test date: Jun-2017

Test sponsor: Dell Inc.

Hardware Availability: Jul-2017

Tested by: Dell Inc.

Software Availability: Nov-2016

Platform Notes (Continued)

This section contains SUT (System Under Test) info as seen by some common utilities. To remove or add to this section, see: <http://www.spec.org/cpu2006/Docs/config.html#sysinfo>

```

From /proc/cpuinfo
model name      : Intel(R) Xeon(R) Gold 6134 CPU @ 3.20GHz
 2 "physical id"s (chips)
 32 "processors"
cores, siblings (Caution: counting these is hw and system dependent. The
following excerpts from /proc/cpuinfo might not be reliable. Use with
caution.)
  cpu cores    : 8
  siblings     : 16
  physical 0   : cores 0 1 2 3 10 11 24 27
  physical 1   : cores 0 1 2 3 10 11 24 27
cache size    : 25344 KB

```

```

From /proc/meminfo
MemTotal:      196687088 kB
HugePages_Total: 0
Hugepagesize:  2048 kB

```

```

From /etc/*release* /etc/*version*
SuSE-release:
SUSE Linux Enterprise Server 12 (x86_64)
VERSION = 12
PATCHLEVEL = 2
# This file is deprecated and will be removed in a future service pack or
release.
# Please check /etc/os-release for details about this release.
os-release:
NAME="SLES"
VERSION="12-SP2"
VERSION_ID="12.2"
PRETTY_NAME="SUSE Linux Enterprise Server 12 SP2"
ID="sles"
ANSI_COLOR="0;32"
CPE_NAME="cpe:/o:suse:sles:12:sp2"

```

```

uname -a:
Linux linux-xp0h 4.4.21-69-default #1 SMP Tue Oct 25 10:58:20 UTC 2016
(9464f67) x86_64 x86_64 x86_64 GNU/Linux

```

run-level 3 Jun 29 02:49

```

SPEC is set to: /root/cpu2006-1.2_ic17u3
Filesystem      Type  Size  Used Avail Use% Mounted on
/dev/sda2       xfs   930G  8.7G  921G   1% /

```

Additional information from dmidecode:

Warning: Use caution when you interpret this section. The 'dmidecode' program reads system data which is "intended to allow hardware to be accurately

Continued on next page



SPEC CINT2006 Result

Copyright 2006-2017 Standard Performance Evaluation Corporation

Dell Inc.

SPECint_rate2006 = 1030

PowerEdge C6420 (Intel Xeon Gold 6134, 3.20 GHz)

SPECint_rate_base2006 = 979

CPU2006 license: 55

Test date: Jun-2017

Test sponsor: Dell Inc.

Hardware Availability: Jul-2017

Tested by: Dell Inc.

Software Availability: Nov-2016

Platform Notes (Continued)

determined", but the intent may not be met, as there are frequent changes to hardware, firmware, and the "DMTF SMBIOS" standard.

BIOS Dell Inc. 1.0.6 06/22/2017

Memory:

12x 00CE063200CE M393A2K43BB1-CTD 16 GB 2 rank 2666 MHz

4x Not Specified Not Specified

(End of data from sysinfo program)

General Notes

Environment variables set by runspec before the start of the run:

LD_LIBRARY_PATH = */root/cpu2006-1.2_icl7u3/lib/ia32:/root/cpu2006-1.2_icl7u3/lib/intel64:/root/cpu2006-1.2_icl7u3/sh10.2"

Binaries compiled on a system with 1x Intel Core i7-4790 CPU + 32GB RAM memory using Redhat Enterprise Linux 7.2

Transparent Huge Pages enabled by default

Filesystem page cache cleared with:

shell invocation of 'sync; echo 3 > /proc/sys/vm/drop_caches' prior to run

runspec command invoked through numactl i.e.:

numactl --interleave=all runspec <etc>

Base Compiler Invocation

C benchmarks:

icc -m32 -L/opt/intel/compilers_and_libraries_2017/linux/lib/ia32

C++ benchmarks:

icpc -m32 -L/opt/intel/compilers_and_libraries_2017/linux/lib/ia32

Base Portability Flags

400.perlbench: -D_FILE_OFFSET_BITS=64 -DSPEC_CPU_LINUX_IA32

401.bzip2: -D_FILE_OFFSET_BITS=64

403.gcc: -D_FILE_OFFSET_BITS=64

429.mcf: -D_FILE_OFFSET_BITS=64

445.gobmk: -D_FILE_OFFSET_BITS=64

456.hmmer: -D_FILE_OFFSET_BITS=64

458.sjeng: -D_FILE_OFFSET_BITS=64

462.libquantum: -D_FILE_OFFSET_BITS=64 -DSPEC_CPU_LINUX

464.h264ref: -D_FILE_OFFSET_BITS=64

471.omnetpp: -D_FILE_OFFSET_BITS=64

473.astar: -D_FILE_OFFSET_BITS=64

483.xalancbmk: -D_FILE_OFFSET_BITS=64 -DSPEC_CPU_LINUX



SPEC CINT2006 Result

Copyright 2006-2017 Standard Performance Evaluation Corporation

Dell Inc.

SPECint_rate2006 = 1030

PowerEdge C6420 (Intel Xeon Gold 6134, 3.20 GHz)

SPECint_rate_base2006 = 979

CPU2006 license: 55

Test date: Jun-2017

Test sponsor: Dell Inc.

Hardware Availability: Jul-2017

Tested by: Dell Inc.

Software Availability: Nov-2016

Base Optimization Flags

C benchmarks:

-xCORE-AVX512 -ipo -O3 -no-prec-div -qopt-prefetch
-qopt-mem-layout-trans=3

C++ benchmarks:

-xCORE-AVX512 -ipo -O3 -no-prec-div -qopt-prefetch
-qopt-mem-layout-trans=3 -Wl,-z,muldefs -L/sh10.2 -lsmartheap

Base Other Flags

C benchmarks:

403.gcc: -Dalloca=_alloca

Peak Compiler Invocation

C benchmarks (except as noted below):

icc -m32 -L/opt/intel/compilers_and_libraries_2017/linux/lib/ia32

400.perlbench: icc -m64

401.bzip2: icc -m64

456.hmmer: icc -m64

458.sjeng: icc -m64

C++ benchmarks:

icpc -m32 -L/opt/intel/compilers_and_libraries_2017/linux/lib/ia32

Peak Portability Flags

400.perlbench: -DSPEC_CPU_LP64 -DSPEC_CPU_LINUX_X64

401.bzip2: -DSPEC_CPU_LP64

403.gcc: -D_FILE_OFFSET_BITS=64

429.mcf: -D_FILE_OFFSET_BITS=64

445.gobmk: -D_FILE_OFFSET_BITS=64

456.hmmer: -DSPEC_CPU_LP64

458.sjeng: -DSPEC_CPU_LP64

462.libquantum: -D_FILE_OFFSET_BITS=64 -DSPEC_CPU_LINUX

464.h264ref: -D_FILE_OFFSET_BITS=64

471.omnetpp: -D_FILE_OFFSET_BITS=64

473.astar: -D_FILE_OFFSET_BITS=64

Continued on next page



SPEC CINT2006 Result

Copyright 2006-2017 Standard Performance Evaluation Corporation

Dell Inc.

SPECint_rate2006 = 1030

PowerEdge C6420 (Intel Xeon Gold 6134, 3.20 GHz)

SPECint_rate_base2006 = 979

CPU2006 license: 55

Test date: Jun-2017

Test sponsor: Dell Inc.

Hardware Availability: Jul-2017

Tested by: Dell Inc.

Software Availability: Nov-2016

Peak Portability Flags (Continued)

483.xalancbmk: -D_FILE_OFFSET_BITS=64 -DSPEC_CPU_LINUX

Peak Optimization Flags

C benchmarks:

400.perlbench: -prof-gen(pass 1) -prof-use(pass 2) -xCORE-AVX512(pass 2)
-par-num-threads=1(pass 1) -ipo(pass 2) -O3(pass 2)
-no-prec-div(pass 2) -auto-ilp32 -qopt-mem-layout-trans=3

401.bzip2: -prof-gen(pass 1) -prof-use(pass 2) -xCORE-AVX512(pass 2)
-par-num-threads=1(pass 1) -ipo(pass 2) -O3(pass 2)
-no-prec-div(pass 2) -qopt-prefetch -auto-ilp32
-qopt-mem-layout-trans=3

403.gcc: -xCORE-AVX512 -ipo -O3 -no-prec-div
-qopt-mem-layout-trans=3

429.mcf: basepeak = yes

445.gobmk: -prof-gen(pass 1) -prof-use(pass 2) -xCORE-AVX512(pass 2)
-par-num-threads=1(pass 1) -ipo(pass 2) -O3(pass 2)
-no-prec-div(pass 2) -qopt-mem-layout-trans=3

456.hmmmer: -xCORE-AVX512 -ipo -O3 -no-prec-div -unroll2 -auto-ilp32
-qopt-mem-layout-trans=3

458.sjeng: -prof-gen(pass 1) -prof-use(pass 2) -xCORE-AVX512(pass 2)
-par-num-threads=1(pass 1) -ipo(pass 2) -O3(pass 2)
-no-prec-div(pass 2) -unroll4 -auto-ilp32
-qopt-mem-layout-trans=3

462.libquantum: basepeak = yes

464.h264ref: -prof-gen(pass 1) -prof-use(pass 2) -xCORE-AVX512(pass 2)
-par-num-threads=1(pass 1) -ipo(pass 2) -O3(pass 2)
-no-prec-div(pass 2) -unroll2 -qopt-mem-layout-trans=3

C++ benchmarks:

471.omnetpp: -prof-gen(pass 1) -prof-use(pass 2) -xCORE-AVX512(pass 2)
-par-num-threads=1(pass 1) -ipo(pass 2) -O3(pass 2)
-no-prec-div(pass 2)
-qopt-ra-region-strategy=block
-qopt-mem-layout-trans=3 -Wl,-z,muldefs
-L/sh10.2 -lsmartheap

Continued on next page



SPEC CINT2006 Result

Copyright 2006-2017 Standard Performance Evaluation Corporation

Dell Inc.

SPECint_rate2006 = 1030

PowerEdge C6420 (Intel Xeon Gold 6134, 3.20 GHz)

SPECint_rate_base2006 = 979

CPU2006 license: 55

Test date: Jun-2017

Test sponsor: Dell Inc.

Hardware Availability: Jul-2017

Tested by: Dell Inc.

Software Availability: Nov-2016

Peak Optimization Flags (Continued)

473.astar: basepeak = yes

483.xalancbmk: basepeak = yes

Peak Other Flags

C benchmarks:

403.gcc: -Dalloca=_alloca

The flags files that were used to format this result can be browsed at

<http://www.spec.org/cpu2006/flags/Intel-ic17.0-official-linux64-revF.html>

<http://www.spec.org/cpu2006/flags/Dell-Platform-Flags-PowerEdge14G-revC.html>

You can also download the XML flags sources by saving the following links:

<http://www.spec.org/cpu2006/flags/Intel-ic17.0-official-linux64-revF.xml>

<http://www.spec.org/cpu2006/flags/Dell-Platform-Flags-PowerEdge14G-revC.xml>

SPEC and SPECint are registered trademarks of the Standard Performance Evaluation Corporation. All other brand and product names appearing in this result are trademarks or registered trademarks of their respective holders.

For questions about this result, please contact the tester.
For other inquiries, please contact webmaster@spec.org.

Tested with SPEC CPU2006 v1.2.
Report generated on Tue Aug 8 15:42:09 2017 by SPEC CPU2006 PS/PDF formatter v6932.
Originally published on 8 August 2017.