



SPEC[®] CFP2006 Result

Copyright 2006-2014 Standard Performance Evaluation Corporation

HITACHI

SPECfp[®]2006 = 59.8

BladeSymphony BS320 (Intel Xeon E5-2420)

SPECfp_base2006 = 57.0

CPU2006 license: 35

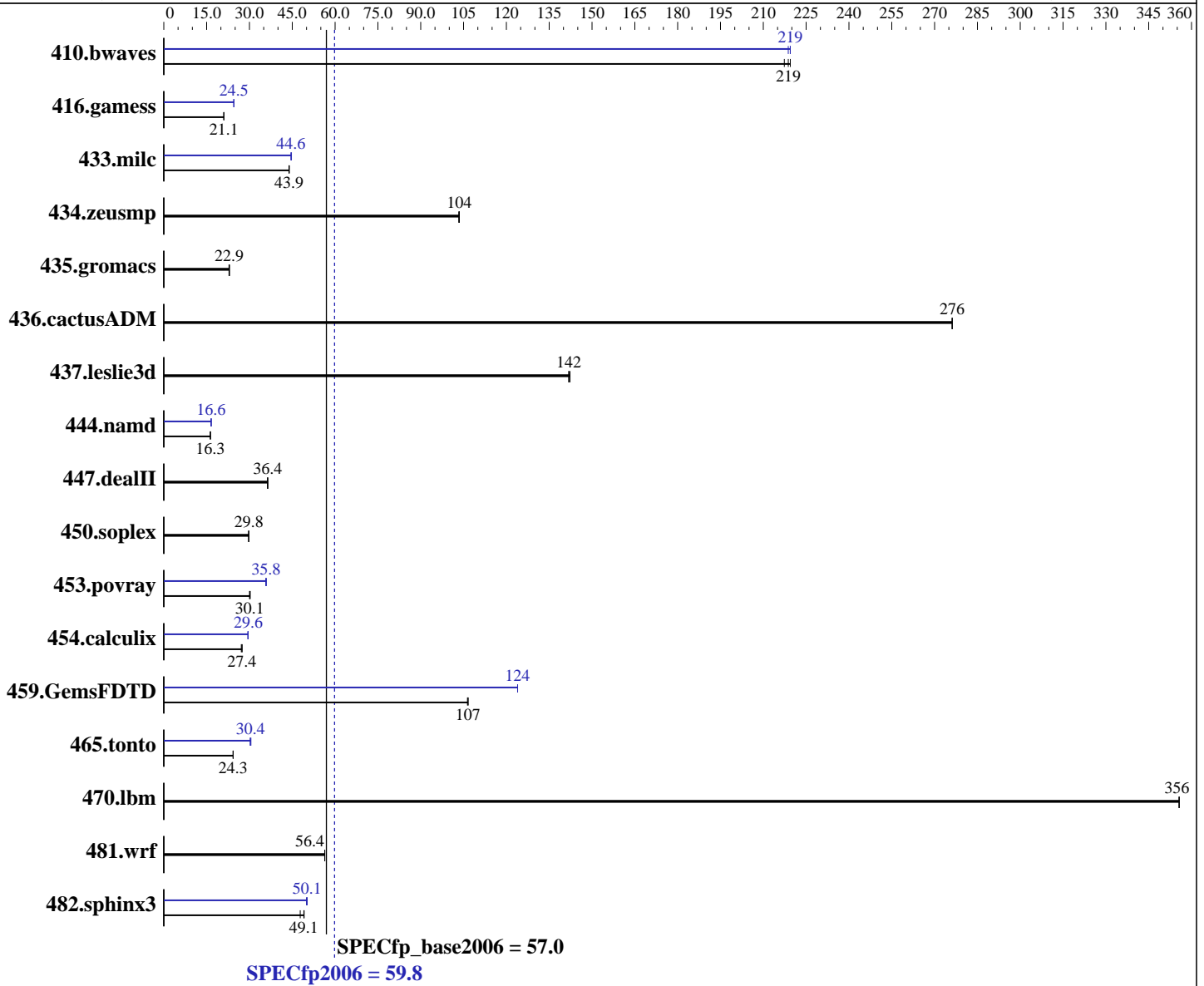
Test sponsor: HITACHI

Tested by: HITACHI

Test date: Jul-2012

Hardware Availability: Jun-2012

Software Availability: Feb-2012



Hardware

CPU Name: Intel Xeon E5-2420
 CPU Characteristics: Intel Turbo Boost Technology up to 2.40 GHz
 CPU MHz: 1900
 FPU: Integrated
 CPU(s) enabled: 12 cores, 2 chips, 6 cores/chip, 2 threads/core
 CPU(s) orderable: 1, 2 chips
 Primary Cache: 32 KB I + 32 KB D on chip per core
 Secondary Cache: 256 KB I+D on chip per core

Continued on next page

Software

Operating System: Red Hat Enterprise Linux Server release 6.2, Kernel 2.6.32-220.4.2.el6.x86_64
 Compiler: C/C++: Version 12.1.0.225 of Intel C++ Studio XE for Linux;
 Fortran: Version 12.1.0.225 of Intel Fortran Studio XE for Linux
 Auto Parallel: Yes
 File System: ext4
 System State: Run level 3 (multi-user)

Continued on next page



SPEC CFP2006 Result

Copyright 2006-2014 Standard Performance Evaluation Corporation

HITACHI

SPECfp2006 = **59.8**

BladeSymphony BS320 (Intel Xeon E5-2420)

SPECfp_base2006 = **57.0**

CPU2006 license: 35

Test sponsor: HITACHI

Tested by: HITACHI

Test date: Jul-2012

Hardware Availability: Jun-2012

Software Availability: Feb-2012

L3 Cache: 15 MB I+D on chip per chip
Other Cache: None
Memory: 96 GB (12 x 8 GB 2Rx4 PC3L-10600R-9, ECC)
Disk Subsystem: 2 x 147 GB SAS, 15000 RPM RAID1 configuration
Other Hardware: None

Base Pointers: 64-bit
Peak Pointers: 32/64-bit
Other Software: None

Results Table

Benchmark	Base						Peak					
	Seconds	Ratio	Seconds	Ratio	Seconds	Ratio	Seconds	Ratio	Seconds	Ratio	Seconds	Ratio
410.bwaves	62.5	217	62.1	219	61.9	219	61.9	219	61.9	219	62.1	219
416.gamess	932	21.0	930	21.1	929	21.1	798	24.5	797	24.6	798	24.5
433.milc	209	43.9	209	43.9	209	43.9	206	44.6	206	44.6	205	44.7
434.zeusmp	87.9	104	87.9	104	88.1	103	87.9	104	87.9	104	88.1	103
435.gromacs	313	22.8	311	22.9	310	23.0	313	22.8	311	22.9	310	23.0
436.cactusADM	43.3	276	43.3	276	43.3	276	43.3	276	43.3	276	43.3	276
437.leslie3d	66.1	142	66.3	142	66.3	142	66.1	142	66.3	142	66.3	142
444.namd	492	16.3	491	16.3	491	16.3	483	16.6	484	16.6	483	16.6
447.dealII	314	36.5	315	36.3	315	36.4	314	36.5	315	36.3	315	36.4
450.soplex	280	29.8	280	29.8	281	29.7	280	29.8	280	29.8	281	29.7
453.povray	176	30.3	177	30.1	177	30.0	149	35.8	148	35.9	149	35.8
454.calculix	301	27.4	304	27.1	301	27.4	279	29.6	281	29.4	279	29.6
459.GemsFDTD	99.7	106	99.5	107	99.5	107	85.6	124	85.6	124	85.6	124
465.tonto	405	24.3	405	24.3	405	24.3	324	30.4	325	30.3	322	30.5
470.lbm	38.6	356	38.6	356	38.6	356	38.6	356	38.6	356	38.6	356
481.wrf	198	56.4	198	56.4	198	56.4	198	56.4	198	56.4	198	56.4
482.sphinx3	408	47.8	396	49.2	397	49.1	390	50.0	389	50.1	388	50.2

Results appear in the order in which they were run. Bold underlined text indicates a median measurement.

Operating System Notes

Stack size set to unlimited using "ulimit -s unlimited"

Platform Notes

Sysinfo program /home/cpu2006/config/sysinfo.rev6800
\$Rev: 6800 \$ \$Date:: 2011-10-11 #\$ 6f2ebdff5032aaa42e583f96b07f99d3
running on localhost.localdomain Wed Jul 25 22:14:53 2012

This section contains SUT (System Under Test) info as seen by some common utilities. To remove or add to this section, see:
<http://www.spec.org/cpu2006/Docs/config.html#sysinfo>

From /proc/cpuinfo
model name : Intel(R) Xeon(R) CPU E5-2420 0 @ 1.90GHz
Continued on next page



SPEC CFP2006 Result

Copyright 2006-2014 Standard Performance Evaluation Corporation

HITACHI

SPECfp2006 = 59.8

BladeSymphony BS320 (Intel Xeon E5-2420)

SPECfp_base2006 = 57.0

CPU2006 license: 35

Test sponsor: HITACHI

Tested by: HITACHI

Test date: Jul-2012

Hardware Availability: Jun-2012

Software Availability: Feb-2012

Platform Notes (Continued)

```

2 "physical id"s (chips)
24 "processors"
cores, siblings (Caution: counting these is hw and system dependent. The
following excerpts from /proc/cpuinfo might not be reliable. Use with
caution.)
cpu cores : 6
siblings  : 12
physical 0: cores 0 1 2 3 4 5
physical 1: cores 0 1 2 3 4 5
cache size : 15360 KB

From /proc/meminfo
MemTotal:      99009112 kB
HugePages_Total:    0
Hugepagesize:    2048 kB

/usr/bin/lsb_release -d
Red Hat Enterprise Linux Server release 6.2 (Santiago)

From /etc/*release* /etc/*version*
redhat-release: Red Hat Enterprise Linux Server release 6.2 (Santiago)
system-release: Red Hat Enterprise Linux Server release 6.2 (Santiago)
system-release-cpe: cpe:/o:redhat:enterprise_linux:6server:ga:server

uname -a:
Linux localhost.localdomain 2.6.32-220.4.2.el6.x86_64 #1 SMP Mon Feb 6
16:39:28 EST 2012 x86_64 x86_64 x86_64 GNU/Linux

run-level 3 Jul 25 21:32

(End of data from sysinfo program)

```

General Notes

Environment variables set by runspec before the start of the run:

```

KMP_AFFINITY = "granularity=fine,compact,1,0"
LD_LIBRARY_PATH = "/home/cpu2006/libs/32:/home/cpu2006/libs/64"
OMP_NUM_THREADS = "12"

```

Binaries compiled on a system with 1x Core i7-860 CPU + 8GB memory using RHEL5.5
Transparent Huge Pages disabled with:
echo never > /sys/kernel/mm/redhat_transparent_hugepage/enabled

Base Compiler Invocation

C benchmarks:
icc -m64

Continued on next page



SPEC CFP2006 Result

Copyright 2006-2014 Standard Performance Evaluation Corporation

HITACHI

SPECfp2006 = 59.8

BladeSymphony BS320 (Intel Xeon E5-2420)

SPECfp_base2006 = 57.0

CPU2006 license: 35

Test date: Jul-2012

Test sponsor: HITACHI

Hardware Availability: Jun-2012

Tested by: HITACHI

Software Availability: Feb-2012

Base Compiler Invocation (Continued)

C++ benchmarks:

icpc -m64

Fortran benchmarks:

ifort -m64

Benchmarks using both Fortran and C:

icc -m64 ifort -m64

Base Portability Flags

410.bwaves: -DSPEC_CPU_LP64
 416.gamess: -DSPEC_CPU_LP64
 433.milc: -DSPEC_CPU_LP64
 434.zeusmp: -DSPEC_CPU_LP64
 435.gromacs: -DSPEC_CPU_LP64 -nofor_main
 436.cactusADM: -DSPEC_CPU_LP64 -nofor_main
 437.leslie3d: -DSPEC_CPU_LP64
 444.namd: -DSPEC_CPU_LP64
 447.dealII: -DSPEC_CPU_LP64
 450.soplex: -DSPEC_CPU_LP64
 453.povray: -DSPEC_CPU_LP64
 454.calculix: -DSPEC_CPU_LP64 -nofor_main
 459.GemsFDTD: -DSPEC_CPU_LP64
 465.tonto: -DSPEC_CPU_LP64
 470.lbm: -DSPEC_CPU_LP64
 481.wrf: -DSPEC_CPU_LP64 -DSPEC_CPU_CASE_FLAG -DSPEC_CPU_LINUX
 482.sphinx3: -DSPEC_CPU_LP64

Base Optimization Flags

C benchmarks:

-xAVX -ipo -O3 -no-prec-div -static -parallel -opt-prefetch
-ansi-alias

C++ benchmarks:

-xAVX -ipo -O3 -no-prec-div -static -opt-prefetch -ansi-alias

Fortran benchmarks:

-xAVX -ipo -O3 -no-prec-div -static -parallel -opt-prefetch

Benchmarks using both Fortran and C:

-xAVX -ipo -O3 -no-prec-div -static -parallel -opt-prefetch
-ansi-alias



SPEC CFP2006 Result

Copyright 2006-2014 Standard Performance Evaluation Corporation

HITACHI

SPECfp2006 = 59.8

BladeSymphony BS320 (Intel Xeon E5-2420)

SPECfp_base2006 = 57.0

CPU2006 license: 35

Test sponsor: HITACHI

Tested by: HITACHI

Test date: Jul-2012

Hardware Availability: Jun-2012

Software Availability: Feb-2012

Peak Compiler Invocation

C benchmarks:

icc -m64

C++ benchmarks:

icpc -m64

Fortran benchmarks:

ifort -m64

Benchmarks using both Fortran and C:

icc -m64 ifort -m64

Peak Portability Flags

Same as Base Portability Flags

Peak Optimization Flags

C benchmarks:

433.milc: -xAVX(pass 2) -prof-gen(pass 1) -ipo(pass 2) -O3(pass 2)
-no-prec-div(pass 2) -prof-use(pass 2) -static -auto-ilp32
-ansi-alias

470.lbm: basepeak = yes

482.sphinx3: -xAVX -ipo -O3 -no-prec-div -unroll2 -ansi-alias
-parallel

C++ benchmarks:

444.namd: -xAVX(pass 2) -prof-gen(pass 1) -ipo(pass 2) -O3(pass 2)
-no-prec-div(pass 2) -prof-use(pass 2) -fno-alias
-auto-ilp32

447.dealIII: basepeak = yes

450.soplex: basepeak = yes

453.povray: -xAVX(pass 2) -prof-gen(pass 1) -ipo(pass 2) -O3(pass 2)
-no-prec-div(pass 2) -prof-use(pass 2) -unroll4 -ansi-alias

Fortran benchmarks:

410.bwaves: -xAVX -ipo -O3 -no-prec-div -opt-prefetch -parallel
-static

Continued on next page



SPEC CFP2006 Result

Copyright 2006-2014 Standard Performance Evaluation Corporation

HITACHI

SPECfp2006 = 59.8

BladeSymphony BS320 (Intel Xeon E5-2420)

SPECfp_base2006 = 57.0

CPU2006 license: 35

Test sponsor: HITACHI

Tested by: HITACHI

Test date: Jul-2012

Hardware Availability: Jun-2012

Software Availability: Feb-2012

Peak Optimization Flags (Continued)

416.gamess: -xAVX(pass 2) -prof-gen(pass 1) -ipo(pass 2) -O3(pass 2)
-no-prec-div(pass 2) -prof-use(pass 2) -unroll2
-inline-level=0 -scalar-rep- -static

434.zeusmp: basepeak = yes

437.leslie3d: basepeak = yes

459.GemsFDTD: -xAVX(pass 2) -prof-gen(pass 1) -ipo(pass 2) -O3(pass 2)
-no-prec-div(pass 2) -prof-use(pass 2) -unroll2
-inline-level=0 -opt-prefetch -parallel

465.tonto: -xAVX(pass 2) -prof-gen(pass 1) -ipo(pass 2) -O3(pass 2)
-no-prec-div(pass 2) -prof-use(pass 2) -inline-calloc
-opt-malloc-options=3 -auto -unroll4

Benchmarks using both Fortran and C:

435.gromacs: basepeak = yes

436.cactusADM: basepeak = yes

454.calculix: -xAVX -ipo -O3 -no-prec-div -auto-ilp32 -ansi-alias

481.wrf: basepeak = yes

The flags files that were used to format this result can be browsed at

<http://www.spec.org/cpu2006/flags/Intel-ic12.1-official-linux64.20111122.html>

<http://www.spec.org/cpu2006/flags/PlatformHitachi-V1.2.html>

You can also download the XML flags sources by saving the following links:

<http://www.spec.org/cpu2006/flags/Intel-ic12.1-official-linux64.20111122.xml>

<http://www.spec.org/cpu2006/flags/PlatformHitachi-V1.2.xml>

SPEC and SPECfp are registered trademarks of the Standard Performance Evaluation Corporation. All other brand and product names appearing in this result are trademarks or registered trademarks of their respective holders.

For questions about this result, please contact the tester.
For other inquiries, please contact webmaster@spec.org.

Tested with SPEC CPU2006 v1.2.
Report generated on Thu Jul 24 12:14:15 2014 by SPEC CPU2006 PS/PDF formatter v6932.
Originally published on 14 August 2012.