



SPEC® CINT2006 Result

Copyright 2006-2014 Standard Performance Evaluation Corporation

NEC Corporation

SPECint®_rate2006 = 1270

Express5800/A2040b (Intel Xeon E7-4830 v2)

SPECint_rate_base2006 = 1230

CPU2006 license: 9006

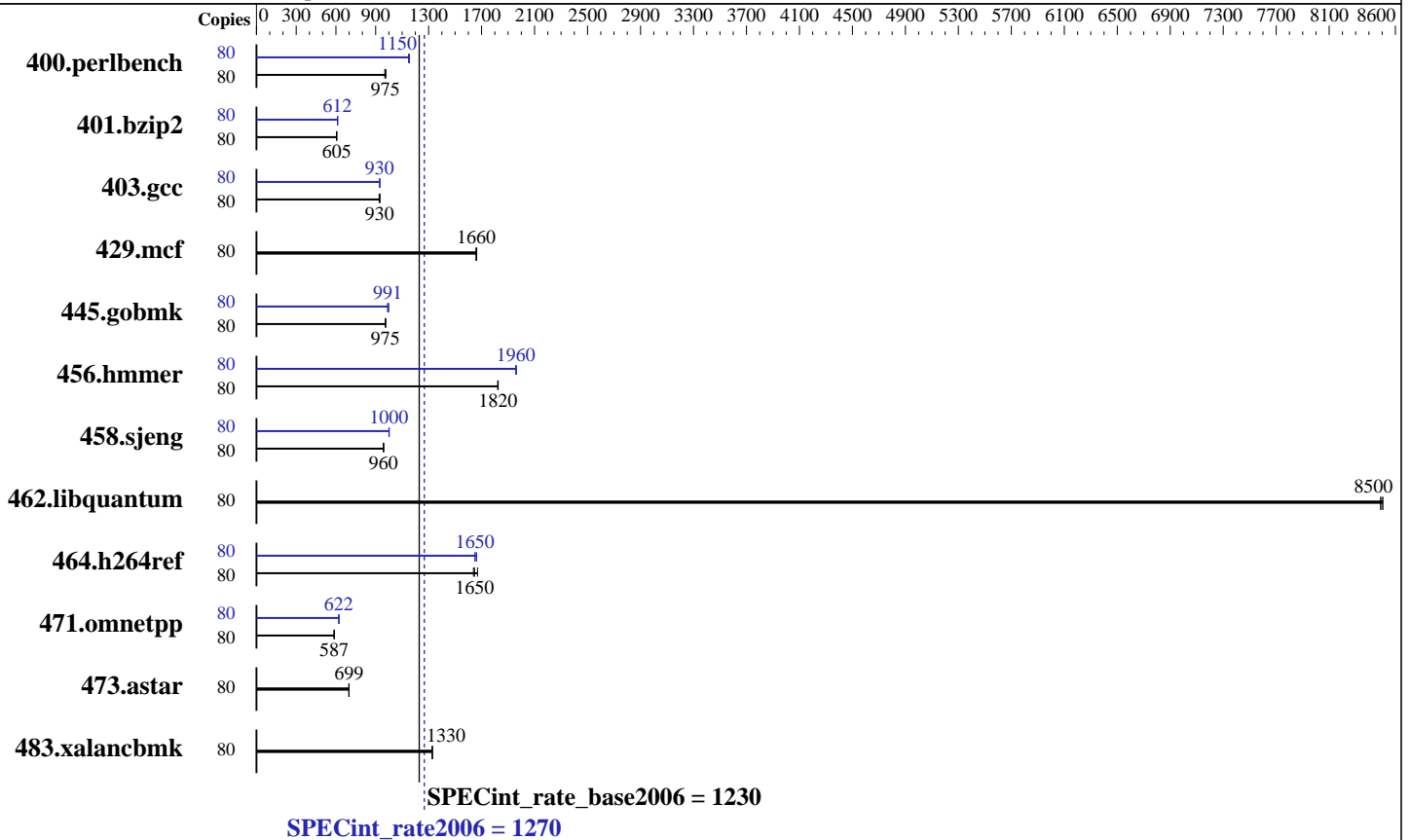
Test date: Sep-2014

Test sponsor: NEC Corporation

Hardware Availability: Mar-2014

Tested by: NEC Corporation

Software Availability: Oct-2013



Hardware

CPU Name: Intel Xeon E7-4830 v2
 CPU Characteristics: Intel Turbo Boost Technology up to 2.70 GHz
 CPU MHz: 2200
 FPU: Integrated
 CPU(s) enabled: 40 cores, 4 chips, 10 cores/chip, 2 threads/core
 CPU(s) orderable: 2,3,4 chips
 Primary Cache: 32 KB I + 32 KB D on chip per core
 Secondary Cache: 256 KB I+D on chip per core
 L3 Cache: 20 MB I+D on chip per chip
 Other Cache: None
 Memory: 1 TB (64 x 16 GB 2Rx4 PC3L-12800R-11, ECC, running at 1066 MHz and CL7)
 Disk Subsystem: 1 x 300 GB SAS, 10000 RPM
 Other Hardware: None

Software

Operating System: Red Hat Enterprise Linux Server release 6.4 (Santiago)
 Kernel 2.6.32-358.23.2.el6.x86_64
 Compiler: C/C++: Version 14.0.1.106 of Intel C++ Studio XE for Linux
 Auto Parallel: No
 File System: ext4
 System State: Run level 3 (multi-user)
 Base Pointers: 32-bit
 Peak Pointers: 32/64-bit
 Other Software: Microquill SmartHeap Multi-Core V10.01



SPEC CINT2006 Result

Copyright 2006-2014 Standard Performance Evaluation Corporation

NEC Corporation

SPECint_rate2006 = 1270

Express5800/A2040b (Intel Xeon E7-4830 v2)

SPECint_rate_base2006 = 1230

CPU2006 license: 9006

Test date: Sep-2014

Test sponsor: NEC Corporation

Hardware Availability: Mar-2014

Tested by: NEC Corporation

Software Availability: Oct-2013

Results Table

Benchmark	Base							Peak						
	Copies	Seconds	Ratio	Seconds	Ratio	Seconds	Ratio	Copies	Seconds	Ratio	Seconds	Ratio	Seconds	Ratio
400.perlbench	80	802	975	800	977	807	969	80	678	1150	678	1150	680	1150
401.bzip2	80	1273	606	1275	605	1276	605	80	1261	612	1259	613	1261	612
403.gcc	80	691	932	692	930	695	926	80	691	932	693	929	692	930
429.mcf	80	439	1660	439	1660	440	1660	80	439	1660	439	1660	440	1660
445.gobmk	80	860	976	861	975	861	974	80	846	991	840	999	847	991
456.hammer	80	409	1830	409	1820	410	1820	80	380	1960	381	1960	381	1960
458.sjeng	80	1009	960	1009	959	1008	960	80	965	1000	968	1000	967	1000
462.libquantum	80	195	8500	195	8490	195	8510	80	195	8500	195	8490	195	8510
464.h264ref	80	1075	1650	1081	1640	1061	1670	80	1065	1660	1073	1650	1072	1650
471.omnetpp	80	852	587	853	586	852	587	80	802	623	804	622	804	622
473.astar	80	804	699	805	697	803	699	80	804	699	805	697	803	699
483.xalancbmk	80	416	1330	416	1330	416	1330	80	416	1330	416	1330	416	1330

Results appear in the order in which they were run. Bold underlined text indicates a median measurement.

Submit Notes

The numactl mechanism was used to bind copies to processors. The config file option 'submit' was used to generate numactl commands to bind each copy to a specific processor. For details, please see the config file.

Operating System Notes

Stack size set to unlimited using "ulimit -s unlimited"
Zone reclaim mode enabled with:
echo 1 > /proc/sys/vm/zone_reclaim_mode

Platform Notes

BIOS Settings:
Memory RAS Mode: Independent mode

General Notes

Environment variables set by runspec before the start of the run:

LD_LIBRARY_PATH = */opt/SmartHeap_10mc/lib:/opt/SmartHeap_10mc/lib64:/opt/intel/composer_xe_2013_sp1.1.106/compiler/lib/ia32:/opt/intel/composer_xe_2013_sp1.1.106/compiler/lib/intel64*

Transparent Huge Pages enabled with:
echo always > /sys/kernel/mm/redhat_transparent_hugepage/enabled
Filesystem page cache cleared with:
echo 1 > /proc/sys/vm/drop_caches
runspec command invoked through numactl i.e.:
numactl --interleave=all runspec <etc>



SPEC CINT2006 Result

Copyright 2006-2014 Standard Performance Evaluation Corporation

NEC Corporation

SPECint_rate2006 = 1270

Express5800/A2040b (Intel Xeon E7-4830 v2)

SPECint_rate_base2006 = 1230

CPU2006 license: 9006

Test date: Sep-2014

Test sponsor: NEC Corporation

Hardware Availability: Mar-2014

Tested by: NEC Corporation

Software Availability: Oct-2013

Base Compiler Invocation

C benchmarks:

icc -m32

C++ benchmarks:

icpc -m32

Base Portability Flags

400.perlbench: -DSPEC_CPU_LINUX_IA32
462.libquantum: -DSPEC_CPU_LINUX
483.xalancbmk: -DSPEC_CPU_LINUX

Base Optimization Flags

C benchmarks:

-xSSE4.2 -ipo -O3 -no-prec-div -opt-prefetch -opt-mem-layout-trans=3

C++ benchmarks:

-xSSE4.2 -ipo -O3 -no-prec-div -opt-prefetch -opt-mem-layout-trans=3
-Wl,-z,muldefs -L/opt/SmartHeap_10mc/lib -lsmarheap

Base Other Flags

C benchmarks:

403.gcc: -Dalloca=_alloca

Peak Compiler Invocation

C benchmarks (except as noted below):

icc -m32

400.perlbench: icc -m64

401.bzip2: icc -m64

456.hmmer: icc -m64

458.sjeng: icc -m64

C++ benchmarks:

icpc -m32



SPEC CINT2006 Result

Copyright 2006-2014 Standard Performance Evaluation Corporation

NEC Corporation

SPECint_rate2006 = 1270

Express5800/A2040b (Intel Xeon E7-4830 v2)

SPECint_rate_base2006 = 1230

CPU2006 license: 9006

Test sponsor: NEC Corporation

Tested by: NEC Corporation

Test date: Sep-2014

Hardware Availability: Mar-2014

Software Availability: Oct-2013

Peak Portability Flags

400.perlbench: -DSPEC_CPU_LP64 -DSPEC_CPU_LINUX_X64
 401.bzip2: -DSPEC_CPU_LP64
 456.hmmer: -DSPEC_CPU_LP64
 458.sjeng: -DSPEC_CPU_LP64
 462.libquantum: -DSPEC_CPU_LINUX
 483.xalancbmk: -DSPEC_CPU_LINUX

Peak Optimization Flags

C benchmarks:

400.perlbench: -xSSE4.2(pass 2) -prof-gen(pass 1) -ipo(pass 2)
 -O3(pass 2) -no-prec-div(pass 2) -prof-use(pass 2)
 -auto-ilp32

401.bzip2: -xSSE4.2(pass 2) -prof-gen(pass 1) -ipo(pass 2)
 -O3(pass 2) -no-prec-div(pass 2) -prof-use(pass 2)
 -opt-prefetch -auto-ilp32 -ansi-alias

403.gcc: -xSSE4.2 -ipo -O3 -no-prec-div

429.mcf: basepeak = yes

445.gobmk: -xSSE4.2(pass 2) -prof-gen(pass 1) -prof-use(pass 2)
 -ansi-alias -opt-mem-layout-trans=3

456.hmmer: -xSSE4.2 -ipo -O3 -no-prec-div -unroll2 -auto-ilp32

458.sjeng: -xSSE4.2(pass 2) -prof-gen(pass 1) -ipo(pass 2)
 -O3(pass 2) -no-prec-div(pass 2) -prof-use(pass 2)
 -unroll4 -auto-ilp32

462.libquantum: basepeak = yes

464.h264ref: -xSSE4.2(pass 2) -prof-gen(pass 1) -ipo(pass 2)
 -O3(pass 2) -no-prec-div(pass 2) -prof-use(pass 2)
 -unroll2 -ansi-alias

C++ benchmarks:

471.omnetpp: -xSSE4.2(pass 2) -prof-gen(pass 1) -ipo(pass 2)
 -O3(pass 2) -no-prec-div(pass 2) -prof-use(pass 2)
 -ansi-alias -opt-ra-region-strategy=block -Wl,-z,muldefs
 -L/opt/SmartHeap_10mc/lib -lsmartheap

473.astar: basepeak = yes

Continued on next page



SPEC CINT2006 Result

Copyright 2006-2014 Standard Performance Evaluation Corporation

NEC Corporation

SPECint_rate2006 = 1270

Express5800/A2040b (Intel Xeon E7-4830 v2)

SPECint_rate_base2006 = 1230

CPU2006 license: 9006

Test sponsor: NEC Corporation

Tested by: NEC Corporation

Test date: Sep-2014

Hardware Availability: Mar-2014

Software Availability: Oct-2013

Peak Optimization Flags (Continued)

483.xalanbmk: basepeak = yes

Peak Other Flags

C benchmarks:

403.gcc: -Dalloca=_alloca

The flags files that were used to format this result can be browsed at

<http://www.spec.org/cpu2006/flags/Intel-ic14.0-official-linux64.20140128.html>

<http://www.spec.org/cpu2006/flags/NEC-platform-Settings-V1.2-A2040b-RevA.html>

You can also download the XML flags sources by saving the following links:

<http://www.spec.org/cpu2006/flags/Intel-ic14.0-official-linux64.20140128.xml>

<http://www.spec.org/cpu2006/flags/NEC-platform-Settings-V1.2-A2040b-RevA.xml>

SPEC and SPECint are registered trademarks of the Standard Performance Evaluation Corporation. All other brand and product names appearing in this result are trademarks or registered trademarks of their respective holders.

For questions about this result, please contact the tester.
For other inquiries, please contact webmaster@spec.org.

Tested with SPEC CPU2006 v1.2.
Report generated on Wed Nov 5 10:23:25 2014 by SPEC CPU2006 PS/PDF formatter v6932.
Originally published on 4 November 2014.