



SPEC[®] CFP2006 Result

Copyright 2006-2015 Standard Performance Evaluation Corporation

Lenovo Group Limited

SPECfp[®]2006 = **116**

Lenovo System x3500 M5
(Intel Xeon E5-2699 v3, 2.30 GHz)

SPECfp_base2006 = **109**

CPU2006 license: 9017

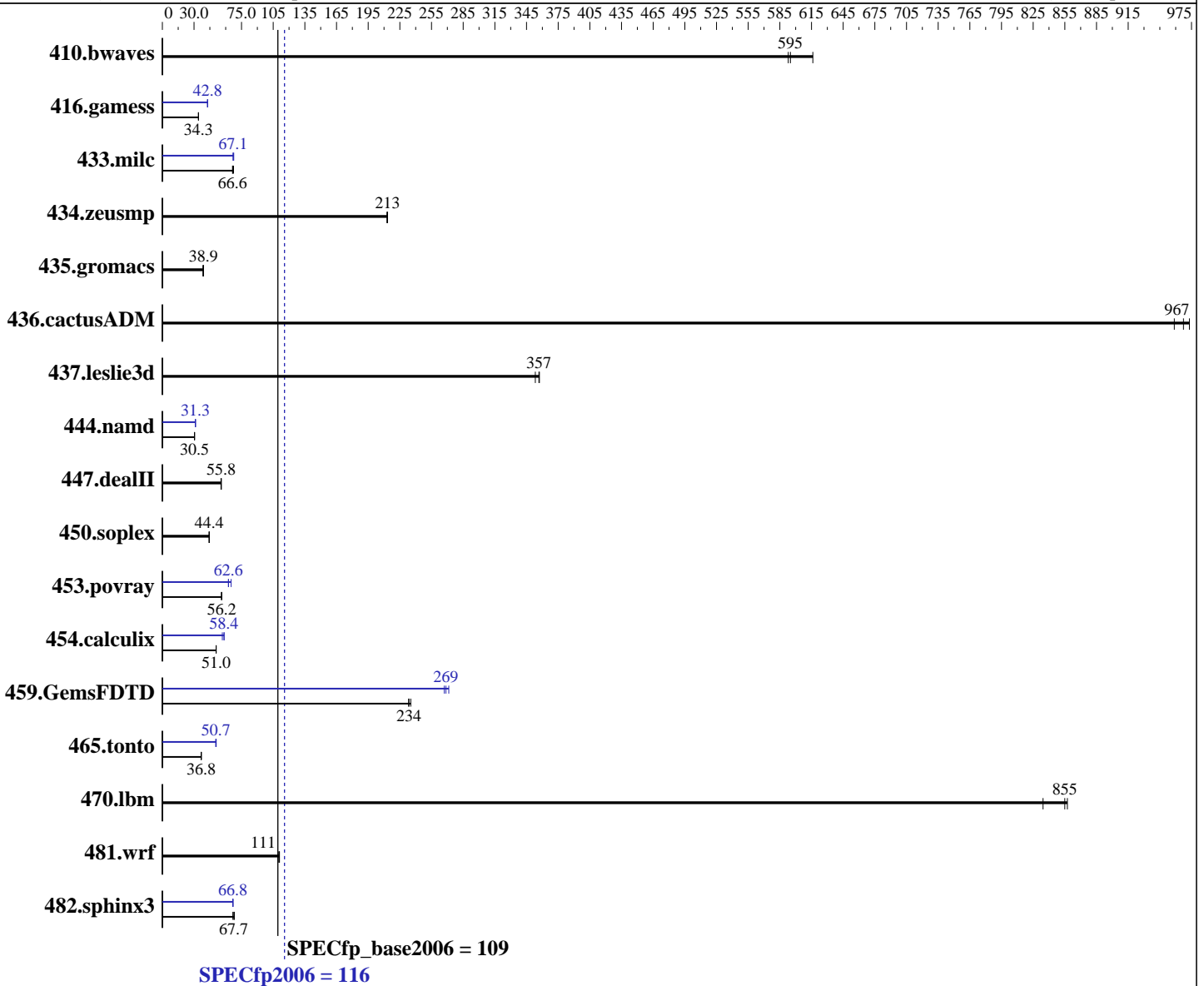
Test date: Jan-2015

Test sponsor: Lenovo Group Limited

Hardware Availability: Jan-2015

Tested by: Lenovo Group Limited

Software Availability: Sep-2014



Hardware

CPU Name: Intel Xeon E5-2699 v3
 CPU Characteristics: Intel Turbo Boost Technology up to 3.60 GHz
 CPU MHz: 2300
 FPU: Integrated
 CPU(s) enabled: 36 cores, 2 chips, 18 cores/chip
 CPU(s) orderable: 1,2 chips
 Primary Cache: 32 KB I + 32 KB D on chip per core
 Secondary Cache: 256 KB I+D on chip per core

Continued on next page

Software

Operating System: Red Hat Enterprise Linux Server release 7.0 (Maipo)
 3.10.0-123.el7.x86_64
 Compiler: C/C++: Version 15.0.0.090 of Intel C++ Studio XE for Linux;
 Fortran: Version 15.0.0.090 of Intel Fortran Studio XE for Linux
 Auto Parallel: Yes
 File System: xfs

Continued on next page



SPEC CFP2006 Result

Copyright 2006-2015 Standard Performance Evaluation Corporation

Lenovo Group Limited

SPECfp2006 = **116**

Lenovo System x3500 M5
(Intel Xeon E5-2699 v3, 2.30 GHz)

SPECfp_base2006 = **109**

CPU2006 license: 9017

Test date: Jan-2015

Test sponsor: Lenovo Group Limited

Hardware Availability: Jan-2015

Tested by: Lenovo Group Limited

Software Availability: Sep-2014

L3 Cache: 45 MB I+D on chip per chip
Other Cache: None
Memory: 256 GB (16 x 16 GB 2Rx4 PC4-2133P-R)
Disk Subsystem: 1 x 1000 GB SATA
Other Hardware: None

System State: Run level 3 (multi-user)
Base Pointers: 64-bit
Peak Pointers: 32/64-bit
Other Software: None

Results Table

Benchmark	Base						Peak					
	Seconds	Ratio	Seconds	Ratio	Seconds	Ratio	Seconds	Ratio	Seconds	Ratio	Seconds	Ratio
410.bwaves	<u>22.8</u>	<u>595</u>	22.9	593	22.1	616	<u>22.8</u>	<u>595</u>	22.9	593	22.1	616
416.gamess	573	34.1	572	34.3	<u>572</u>	<u>34.3</u>	458	42.8	457	42.9	<u>457</u>	<u>42.8</u>
433.milc	138	66.5	<u>138</u>	<u>66.6</u>	136	67.4	136	67.6	137	67.1	<u>137</u>	<u>67.1</u>
434.zeusmp	42.7	213	<u>42.7</u>	<u>213</u>	42.8	213	42.7	213	<u>42.7</u>	<u>213</u>	42.8	213
435.gromacs	<u>184</u>	<u>38.9</u>	186	38.4	183	38.9	<u>184</u>	<u>38.9</u>	186	38.4	183	38.9
436.cactusADM	12.3	973	12.5	959	<u>12.4</u>	<u>967</u>	12.3	973	12.5	959	<u>12.4</u>	<u>967</u>
437.leslie3d	<u>26.4</u>	<u>357</u>	26.3	357	26.6	353	<u>26.4</u>	<u>357</u>	26.3	357	26.6	353
444.namd	<u>263</u>	<u>30.5</u>	263	30.5	263	30.5	256	31.3	256	31.3	<u>256</u>	<u>31.3</u>
447.dealII	<u>205</u>	<u>55.8</u>	206	55.5	205	55.8	<u>205</u>	<u>55.8</u>	206	55.5	205	55.8
450.soplex	<u>188</u>	<u>44.4</u>	187	44.5	189	44.2	<u>188</u>	<u>44.4</u>	187	44.5	189	44.2
453.povray	94.6	56.2	95.0	56.0	<u>94.7</u>	<u>56.2</u>	<u>84.9</u>	<u>62.6</u>	81.7	65.2	85.0	62.6
454.calculix	162	50.9	162	51.0	<u>162</u>	<u>51.0</u>	<u>141</u>	<u>58.4</u>	145	56.8	141	58.5
459.GemsFDTD	45.1	235	<u>45.4</u>	<u>234</u>	45.5	233	39.1	271	<u>39.5</u>	<u>269</u>	39.7	267
465.tonto	266	37.0	<u>267</u>	<u>36.8</u>	268	36.7	193	51.0	<u>194</u>	<u>50.7</u>	194	50.6
470.lbm	16.5	834	<u>16.1</u>	<u>855</u>	16.0	857	16.5	834	<u>16.1</u>	<u>855</u>	16.0	857
481.wrf	<u>101</u>	<u>111</u>	101	111	101	110	<u>101</u>	<u>111</u>	101	111	101	110
482.sphinx3	286	68.2	292	66.8	<u>288</u>	<u>67.7</u>	<u>292</u>	<u>66.8</u>	291	67.0	292	66.7

Results appear in the order in which they were run. Bold underlined text indicates a median measurement.

Operating System Notes

Stack size set to unlimited using "ulimit -s unlimited"

Platform Notes

BIOS setting:
Operating Mode set to "Efficiency-Favor Performance"
Intel Hyperthreading set to Disabled
COD Preference set to Disable
Early Snoop Preference set to Disable
Sysinfo program /root/SPECcpu_15/config/sysinfo.rev6914
\$Rev: 6914 \$ \$Date:: 2014-06-25 #\$ e3fbb8667b5a285932ceab81e28219e1
running on x3500M5 Sat Jan 10 07:31:21 2015

This section contains SUT (System Under Test) info as seen by
Continued on next page



SPEC CFP2006 Result

Copyright 2006-2015 Standard Performance Evaluation Corporation

Lenovo Group Limited

SPECfp2006 = 116

Lenovo System x3500 M5
(Intel Xeon E5-2699 v3, 2.30 GHz)

SPECfp_base2006 = 109

CPU2006 license: 9017

Test date: Jan-2015

Test sponsor: Lenovo Group Limited

Hardware Availability: Jan-2015

Tested by: Lenovo Group Limited

Software Availability: Sep-2014

Platform Notes (Continued)

some common utilities. To remove or add to this section, see:
<http://www.spec.org/cpu2006/Docs/config.html#sysinfo>

```

From /proc/cpuinfo
  model name : Intel(R) Xeon(R) CPU E5-2699 v3 @ 2.30GHz
  2 "physical id"s (chips)
  36 "processors"
  cores, siblings (Caution: counting these is hw and system dependent. The
  following excerpts from /proc/cpuinfo might not be reliable. Use with
  caution.)
    cpu cores : 18
    siblings  : 18
    physical 0: cores 0 1 2 3 4 8 9 10 11 16 17 18 19 20 24 25 26 27
    physical 1: cores 0 1 2 3 4 8 9 10 11 16 17 18 19 20 24 25 26 27
  cache size : 46080 KB

```

```

From /proc/meminfo
MemTotal:      263455364 kB
HugePages_Total:      0
Hugepagesize:    2048 kB

```

```

From /etc/*release* /etc/*version*
os-release:
NAME="Red Hat Enterprise Linux Server"
VERSION="7.0 (Maipo)"
ID="rhel"
ID_LIKE="fedora"
VERSION_ID="7.0"
PRETTY_NAME="Red Hat Enterprise Linux Server 7.0 (Maipo)"
ANSI_COLOR="0;31"
CPE_NAME="cpe:/o:redhat:enterprise_linux:7.0:GA:server"
redhat-release: Red Hat Enterprise Linux Server release 7.0 (Maipo)
system-release: Red Hat Enterprise Linux Server release 7.0 (Maipo)
system-release-cpe: cpe:/o:redhat:enterprise_linux:7.0:ga:server

```

```

uname -a:
Linux x3500M5 3.10.0-123.el7.x86_64 #1 SMP Mon May 5 11:16:57 EDT 2014 x86_64
x86_64 x86_64 GNU/Linux

```

run-level 3 Jan 10 07:22

```

SPEC is set to: /root/SPECcpu_15
Filesystem      Type  Size  Used Avail Use% Mounted on
/dev/mapper/rhel-root xfs  927G  9.4G  917G   2% /
Additional information from dmidecode:

```

Warning: Use caution when you interpret this section. The 'dmidecode' program reads system data which is "intended to allow hardware to be accurately determined", but the intent may not be met, as there are frequent changes to hardware, firmware, and the "DMTF SMBIOS" standard.

BIOS IBM -[TAE103F-1.02]- 12/05/2014
Continued on next page



SPEC CFP2006 Result

Copyright 2006-2015 Standard Performance Evaluation Corporation

Lenovo Group Limited

SPECfp2006 = 116

Lenovo System x3500 M5
(Intel Xeon E5-2699 v3, 2.30 GHz)

SPECfp_base2006 = 109

CPU2006 license: 9017

Test date: Jan-2015

Test sponsor: Lenovo Group Limited

Hardware Availability: Jan-2015

Tested by: Lenovo Group Limited

Software Availability: Sep-2014

Platform Notes (Continued)

Memory:

3x Hynix HMA42GR7MFR4N-TF 16 GB 2 rank 2133 MHz
13x Hynix HMA42GR7MFR4N-TFT1 16 GB 2 rank 2133 MHz
8x NO DIMM Unknown

(End of data from sysinfo program)

General Notes

Environment variables set by runspec before the start of the run:

```
KMP_AFFINITY = "granularity=fine,compact"
LD_LIBRARY_PATH = "/root/SPECcpu_15/libs/32:/root/SPECcpu_15/libs/64:/root/SPECcpu_15/sh"
OMP_NUM_THREADS = "36"
```

Binaries compiled on a system with 1x Core i5-4670K CPU + 16GB memory using RedHat EL 7.0

Transparent Huge Pages enabled with:

```
echo always > /sys/kernel/mm/transparent_hugepage/enabled
```

Base Compiler Invocation

C benchmarks:

```
icc -m64
```

C++ benchmarks:

```
icpc -m64
```

Fortran benchmarks:

```
ifort -m64
```

Benchmarks using both Fortran and C:

```
icc -m64 ifort -m64
```

Base Portability Flags

```
410.bwaves: -DSPEC_CPU_LP64
416.gamess: -DSPEC_CPU_LP64
433.milc: -DSPEC_CPU_LP64
434.zeusmp: -DSPEC_CPU_LP64
435.gromacs: -DSPEC_CPU_LP64 -nofor_main
436.cactusADM: -DSPEC_CPU_LP64 -nofor_main
437.leslie3d: -DSPEC_CPU_LP64
444.namd: -DSPEC_CPU_LP64
447.dealII: -DSPEC_CPU_LP64
450.soplex: -DSPEC_CPU_LP64
453.povray: -DSPEC_CPU_LP64
```

Continued on next page



SPEC CFP2006 Result

Copyright 2006-2015 Standard Performance Evaluation Corporation

Lenovo Group Limited

SPECfp2006 = 116

Lenovo System x3500 M5
(Intel Xeon E5-2699 v3, 2.30 GHz)

SPECfp_base2006 = 109

CPU2006 license: 9017

Test date: Jan-2015

Test sponsor: Lenovo Group Limited

Hardware Availability: Jan-2015

Tested by: Lenovo Group Limited

Software Availability: Sep-2014

Base Portability Flags (Continued)

```

454.calculix: -DSPEC_CPU_LP64 -nofor_main
459.GemsFDTD: -DSPEC_CPU_LP64
465.tonto: -DSPEC_CPU_LP64
470.lbm: -DSPEC_CPU_LP64
481.wrf: -DSPEC_CPU_LP64 -DSPEC_CPU_CASE_FLAG -DSPEC_CPU_LINUX
482.sphinx3: -DSPEC_CPU_LP64

```

Base Optimization Flags

C benchmarks:

```

-xCORE-AVX2 -ipo -O3 -no-prec-div -parallel -opt-prefetch
-ansi-alias

```

C++ benchmarks:

```

-xCORE-AVX2 -ipo -O3 -no-prec-div -opt-prefetch -ansi-alias

```

Fortran benchmarks:

```

-xCORE-AVX2 -ipo -O3 -no-prec-div -parallel -opt-prefetch

```

Benchmarks using both Fortran and C:

```

-xCORE-AVX2 -ipo -O3 -no-prec-div -parallel -opt-prefetch
-ansi-alias

```

Peak Compiler Invocation

C benchmarks:

```

icc -m64

```

C++ benchmarks:

```

icpc -m64

```

Fortran benchmarks:

```

ifort -m64

```

Benchmarks using both Fortran and C:

```

icc -m64 ifort -m64

```

Peak Portability Flags

Same as Base Portability Flags



SPEC CFP2006 Result

Copyright 2006-2015 Standard Performance Evaluation Corporation

Lenovo Group Limited

SPECfp2006 = 116

Lenovo System x3500 M5
(Intel Xeon E5-2699 v3, 2.30 GHz)

SPECfp_base2006 = 109

CPU2006 license: 9017

Test date: Jan-2015

Test sponsor: Lenovo Group Limited

Hardware Availability: Jan-2015

Tested by: Lenovo Group Limited

Software Availability: Sep-2014

Peak Optimization Flags

C benchmarks:

433.milc: -xCORE-AVX2(pass 2) -prof-gen(pass 1) -ipo(pass 2)
-O3(pass 2) -no-prec-div(pass 2) -prof-use(pass 2)
-auto-ilp32 -ansi-alias

470.lbm: basepeak = yes

482.sphinx3: -xCORE-AVX2 -ipo -O3 -no-prec-div -unroll2 -ansi-alias
-parallel

C++ benchmarks:

444.namd: -xCORE-AVX2(pass 2) -prof-gen(pass 1) -ipo(pass 2)
-O3(pass 2) -no-prec-div(pass 2) -prof-use(pass 2)
-fno-alias -auto-ilp32

447.dealII: basepeak = yes

450.soplex: basepeak = yes

453.povray: -xCORE-AVX2(pass 2) -prof-gen(pass 1) -ipo(pass 2)
-O3(pass 2) -no-prec-div(pass 2) -prof-use(pass 2) -unroll4
-ansi-alias

Fortran benchmarks:

410.bwaves: basepeak = yes

416.gamess: -xCORE-AVX2(pass 2) -prof-gen(pass 1) -ipo(pass 2)
-O3(pass 2) -no-prec-div(pass 2) -prof-use(pass 2) -unroll2
-inline-level=0 -scalar-rep-

434.zeusmp: basepeak = yes

437.leslie3d: basepeak = yes

459.GemsFDTD: -xCORE-AVX2(pass 2) -prof-gen(pass 1) -ipo(pass 2)
-O3(pass 2) -no-prec-div(pass 2) -prof-use(pass 2) -unroll2
-inline-level=0 -opt-prefetch -parallel

465.tonto: -xCORE-AVX2(pass 2) -prof-gen(pass 1) -ipo(pass 2)
-O3(pass 2) -no-prec-div(pass 2) -prof-use(pass 2)
-inline-calloc -opt-malloc-options=3 -auto -unroll4

Benchmarks using both Fortran and C:

435.gromacs: basepeak = yes

Continued on next page



SPEC CFP2006 Result

Copyright 2006-2015 Standard Performance Evaluation Corporation

Lenovo Group Limited

SPECfp2006 = 116

Lenovo System x3500 M5
(Intel Xeon E5-2699 v3, 2.30 GHz)

SPECfp_base2006 = 109

CPU2006 license: 9017

Test date: Jan-2015

Test sponsor: Lenovo Group Limited

Hardware Availability: Jan-2015

Tested by: Lenovo Group Limited

Software Availability: Sep-2014

Peak Optimization Flags (Continued)

436.cactusADM: basepeak = yes

454.calculix: -xCORE-AVX2 -ipo -O3 -no-prec-div -auto-ilp32 -ansi-alias

481.wrf: basepeak = yes

The flags files that were used to format this result can be browsed at

<http://www.spec.org/cpu2006/flags/Intel-ic15.0-official-linux64.html>

<http://www.spec.org/cpu2006/flags/Lenovo-Platform-Flags-V1.2-HSW-B.20141230.html>

You can also download the XML flags sources by saving the following links:

<http://www.spec.org/cpu2006/flags/Intel-ic15.0-official-linux64.xml>

<http://www.spec.org/cpu2006/flags/Lenovo-Platform-Flags-V1.2-HSW-B.20141230.xml>

SPEC and SPECfp are registered trademarks of the Standard Performance Evaluation Corporation. All other brand and product names appearing in this result are trademarks or registered trademarks of their respective holders.

For questions about this result, please contact the tester.
For other inquiries, please contact webmaster@spec.org.

Tested with SPEC CPU2006 v1.2.
Report generated on Mon Feb 23 16:46:08 2015 by SPEC CPU2006 PS/PDF formatter v6932.
Originally published on 27 January 2015.