



SPEC® CINT2006 Result

Copyright 2006-2016 Standard Performance Evaluation Corporation

Supermicro

SuperServer 6028TP-HTFR
(X10DRT-PIBF, Intel Xeon E5-2699 v4)

SPECint®2006 = 73.5

SPECint_base2006 = 71.6

CPU2006 license: 001176

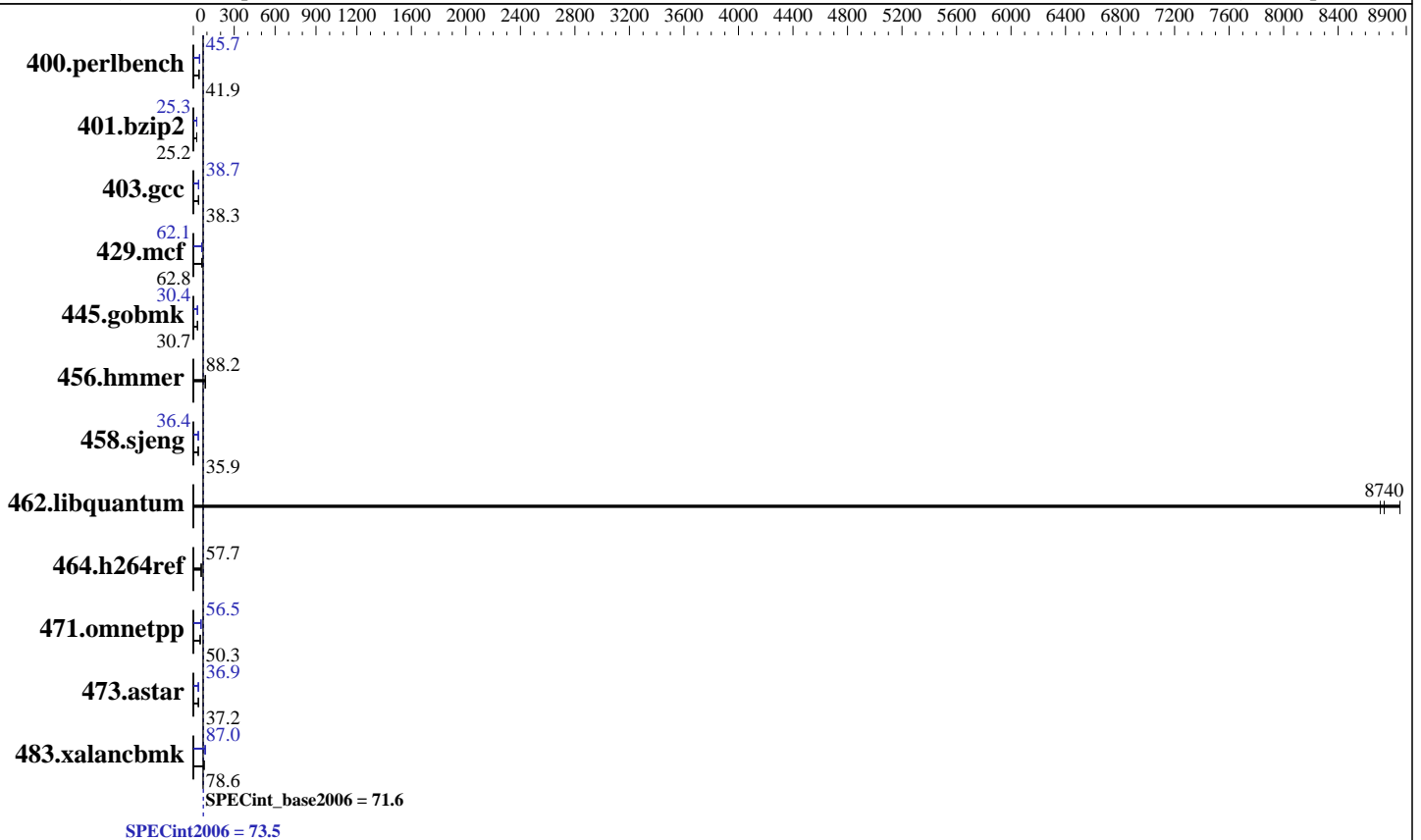
Test sponsor: Supermicro

Tested by: Supermicro

Test date: Mar-2016

Hardware Availability: Mar-2016

Software Availability: Sep-2015



Hardware

CPU Name: Intel Xeon E5-2699 v4
 CPU Characteristics: Intel Turbo Boost Technology up to 3.60 GHz
 CPU MHz: 2200
 FPU: Integrated
 CPU(s) enabled: 44 cores, 2 chips, 22 cores/chip
 CPU(s) orderable: 1,2 chips
 Primary Cache: 32 KB I + 32 KB D on chip per core
 Secondary Cache: 256 KB I+D on chip per core
 L3 Cache: 55 MB I+D on chip per chip
 Other Cache: None
 Memory: 256 GB (16 x 16 GB 2Rx4 PC4-2400P-R)
 Disk Subsystem: 1 x 600 GB SATA III, SSD
 Other Hardware: None

Software

Operating System: SUSE Linux Enterprise Server 12,
Kernel 3.12.28-4-default
 Compiler: C/C++: Version 16.0.0.101 of Intel C++ Studio XE for Linux
 Auto Parallel: Yes
 File System: ext4
 System State: Run level 3 (multi-user)
 Base Pointers: 32/64-bit
 Peak Pointers: 32/64-bit
 Other Software: Microquill SmartHeap V10.2



SPEC CINT2006 Result

Copyright 2006-2016 Standard Performance Evaluation Corporation

Supermicro

SuperServer 6028TP-HTFR
(X10DRT-PIBF, Intel Xeon E5-2699 v4)

SPECint2006 = **73.5**

SPECint_base2006 = **71.6**

CPU2006 license: 001176
Test sponsor: Supermicro
Tested by: Supermicro

Test date: Mar-2016
Hardware Availability: Mar-2016
Software Availability: Sep-2015

Results Table

Benchmark	Base						Peak					
	Seconds	Ratio	Seconds	Ratio	Seconds	Ratio	Seconds	Ratio	Seconds	Ratio	Seconds	Ratio
400.perlbench	233	42.0	236	41.4	<u>233</u>	<u>41.9</u>	213	45.8	214	45.7	<u>214</u>	<u>45.7</u>
401.bzip2	384	25.1	382	25.3	<u>383</u>	<u>25.2</u>	382	25.3	<u>381</u>	<u>25.3</u>	381	25.3
403.gcc	211	38.2	<u>210</u>	<u>38.3</u>	210	38.3	211	38.1	208	38.7	<u>208</u>	<u>38.7</u>
429.mcf	<u>145</u>	<u>62.8</u>	144	63.5	146	62.4	149	61.3	<u>147</u>	<u>62.1</u>	147	62.2
445.gobmk	342	30.7	<u>342</u>	<u>30.7</u>	342	30.6	345	30.4	<u>345</u>	<u>30.4</u>	346	30.3
456.hammer	106	88.1	106	88.3	<u>106</u>	<u>88.2</u>	106	88.1	106	88.3	<u>106</u>	<u>88.2</u>
458.sjeng	337	35.9	<u>337</u>	<u>35.9</u>	337	35.9	333	36.4	<u>333</u>	<u>36.4</u>	333	36.3
462.libquantum	2.34	8850	2.38	8710	<u>2.37</u>	<u>8740</u>	2.34	8850	2.38	8710	<u>2.37</u>	<u>8740</u>
464.h264ref	384	57.7	383	57.8	<u>384</u>	<u>57.7</u>	384	57.7	383	57.8	<u>384</u>	<u>57.7</u>
471.omnetpp	125	50.0	<u>124</u>	<u>50.3</u>	124	50.6	112	56.0	<u>111</u>	<u>56.5</u>	111	56.5
473.astar	189	37.2	<u>189</u>	<u>37.2</u>	189	37.2	191	36.7	190	36.9	<u>190</u>	<u>36.9</u>
483.xalancbmk	87.3	79.0	<u>87.8</u>	<u>78.6</u>	88.0	78.5	<u>79.3</u>	<u>87.0</u>	79.3	87.0	79.2	87.2

Results appear in the order in which they were run. Bold underlined text indicates a median measurement.

Submit Notes

The config file option 'submit' was used.

Operating System Notes

Stack size set to unlimited using "ulimit -s unlimited"

Platform Notes

BIOS Settings:

COD Enable = Disable

Early Snoop = Disable

Hyper-Threading (ALL) = Disable

Enforce POR = Disabled

Sysinfo program /home/SPEC2K6/SPEC2006-V12/config/sysinfo.rev6914

\$Rev: 6914 \$ \$Date:: 2014-06-25 # \$ e3fbb8667b5a285932ceab81e28219e1

running on 30-113 Sat Mar 5 17:32:51 2016

This section contains SUT (System Under Test) info as seen by some common utilities. To remove or add to this section, see:

<http://www.spec.org/cpu2006/Docs/config.html#sysinfo>

From /proc/cpuinfo

model name : Intel(R) Xeon(R) CPU E5-2699 v4 @ 2.20GHz

2 "physical id"s (chips)

44 "processors"

cores, siblings (Caution: counting these is hw and system dependent. The following excerpts from /proc/cpuinfo might not be reliable. Use with

Continued on next page

Standard Performance Evaluation Corporation

info@spec.org

<http://www.spec.org/>



SPEC CINT2006 Result

Copyright 2006-2016 Standard Performance Evaluation Corporation

Supermicro

SuperServer 6028TP-HTFR
(X10DRT-PIBF, Intel Xeon E5-2699 v4)

SPECint2006 = 73.5

SPECint_base2006 = 71.6

CPU2006 license: 001176
Test sponsor: Supermicro
Tested by: Supermicro

Test date: Mar-2016
Hardware Availability: Mar-2016
Software Availability: Sep-2015

Platform Notes (Continued)

```
caution.)
  cpu cores : 22
  siblings  : 22
  physical 0: cores 0 1 2 3 4 5 8 9 10 11 12 16 17 18 19 20 21 24 25 26 27
                28
  physical 1: cores 0 1 2 3 4 5 8 9 10 11 12 16 17 18 19 20 21 24 25 26 27
                28
  cache size : 56320 KB
```

```
From /proc/meminfo
MemTotal:      264563328 kB
HugePages_Total:      0
Hugepagesize:    2048 kB
```

```
/usr/bin/lsb_release -d
SUSE Linux Enterprise Server 12
```

```
From /etc/*release* /etc/*version*
SuSE-release:
  SUSE Linux Enterprise Server 12 (x86_64)
  VERSION = 12
  PATCHLEVEL = 0
  # This file is deprecated and will be removed in a future service pack or
  # release.
  # Please check /etc/os-release for details about this release.
os-release:
  NAME="SLES"
  VERSION="12"
  VERSION_ID="12"
  PRETTY_NAME="SUSE Linux Enterprise Server 12"
  ID="sles"
  ANSI_COLOR="0;32"
  CPE_NAME="cpe:/o:suse:sles:12"
```

```
uname -a:
Linux 30-113 3.12.28-4-default #1 SMP Thu Sep 25 17:02:34 UTC 2014 (9879bd4)
x86_64 x86_64 x86_64 GNU/Linux
```

```
run-level 3 Mar 5 17:23
```

```
SPEC is set to: /home/SPEC2K6/SPEC2006-V12
Filesystem      Type  Size  Used Avail Use% Mounted on
/dev/sda5       ext4  497G  8.5G  487G   2% /home
```

Additional information from dmidecode:

Warning: Use caution when you interpret this section. The 'dmidecode' program reads system data which is "intended to allow hardware to be accurately determined", but the intent may not be met, as there are frequent changes to hardware, firmware, and the "DMTF SMBIOS" standard.

BIOS American Megatrends Inc. 2.0 12/18/2015
Memory:

Continued on next page



SPEC CINT2006 Result

Copyright 2006-2016 Standard Performance Evaluation Corporation

Supermicro

SuperServer 6028TP-HTFR
(X10DRT-PIBF, Intel Xeon E5-2699 v4)

SPECint2006 = 73.5

SPECint_base2006 = 71.6

CPU2006 license: 001176
Test sponsor: Supermicro
Tested by: Supermicro

Test date: Mar-2016
Hardware Availability: Mar-2016
Software Availability: Sep-2015

Platform Notes (Continued)

16x Samsung M393A2G40DB1-CRC 16 GB 2 rank 2400 MHz

(End of data from sysinfo program)

General Notes

Environment variables set by runspec before the start of the run:

KMP_AFFINITY = "granularity=fine,scatter"

LD_LIBRARY_PATH = "/home/SPEC2K6/SPEC2006-V12/libs/32:/home/SPEC2K6/SPEC2006-V12/libs/64:/home/SPEC2K6/SPEC2006-V12/sh"

OMP_NUM_THREADS = "44"

Binaries compiled on a system with 1x Intel Core i5-4670K CPU + 32GB memory using RedHat EL 7.1

Transparent Huge Pages enabled with:

echo always > /sys/kernel/mm/transparent_hugepage/enabled

Base Compiler Invocation

C benchmarks:

icc -m64

C++ benchmarks:

icpc -m64

Base Portability Flags

400.perlbench: -DSPEC_CPU_LP64 -DSPEC_CPU_LINUX_X64
401.bzip2: -DSPEC_CPU_LP64
403.gcc: -DSPEC_CPU_LP64
429.mcf: -DSPEC_CPU_LP64
445.gobmk: -DSPEC_CPU_LP64
456.hmmer: -DSPEC_CPU_LP64
458.sjeng: -DSPEC_CPU_LP64
462.libquantum: -DSPEC_CPU_LP64 -DSPEC_CPU_LINUX
464.h264ref: -DSPEC_CPU_LP64
471.omnetpp: -DSPEC_CPU_LP64
473.astar: -DSPEC_CPU_LP64
483.xalancbmk: -DSPEC_CPU_LP64 -DSPEC_CPU_LINUX

Base Optimization Flags

C benchmarks:

-xCORE-AVX2 -ipo -O3 -no-prec-div -parallel -opt-prefetch -auto-p32

Continued on next page



SPEC CINT2006 Result

Copyright 2006-2016 Standard Performance Evaluation Corporation

Supermicro

SuperServer 6028TP-HTFR
(X10DRT-PIBF, Intel Xeon E5-2699 v4)

SPECint2006 = 73.5

SPECint_base2006 = 71.6

CPU2006 license: 001176
Test sponsor: Supermicro
Tested by: Supermicro

Test date: Mar-2016
Hardware Availability: Mar-2016
Software Availability: Sep-2015

Base Optimization Flags (Continued)

C++ benchmarks:

-xCORE-AVX2 -ipo -O3 -no-prec-div -opt-prefetch -auto-p32
-Wl,-z,muldefs -L/sh -lsmartheap64

Base Other Flags

C benchmarks:

403.gcc: -Dalloca=_alloca

Peak Compiler Invocation

C benchmarks (except as noted below):

icc -m64

400.perlbench: icc -m32 -L/opt/intel/compilers_and_libraries_2016/linux/compiler/lib/ia32_lin

445.gobmk: icc -m32 -L/opt/intel/compilers_and_libraries_2016/linux/compiler/lib/ia32_lin

C++ benchmarks (except as noted below):

icpc -m32 -L/opt/intel/compilers_and_libraries_2016/linux/compiler/lib/ia32_lin

473.astar: icpc -m64

Peak Portability Flags

400.perlbench: -D_FILE_OFFSET_BITS=64 -DSPEC_CPU_LINUX_IA32

401.bzip2: -DSPEC_CPU_LP64

403.gcc: -DSPEC_CPU_LP64

429.mcf: -DSPEC_CPU_LP64

445.gobmk: -D_FILE_OFFSET_BITS=64

456.hmmer: -DSPEC_CPU_LP64

458.sjeng: -DSPEC_CPU_LP64

462.libquantum: -DSPEC_CPU_LP64 -DSPEC_CPU_LINUX

464.h264ref: -DSPEC_CPU_LP64

471.omnetpp: -D_FILE_OFFSET_BITS=64

473.astar: -DSPEC_CPU_LP64

483.xalancbmk: -D_FILE_OFFSET_BITS=64 -DSPEC_CPU_LINUX



SPEC CINT2006 Result

Copyright 2006-2016 Standard Performance Evaluation Corporation

Supermicro

SuperServer 6028TP-HTFR
(X10DRT-PIBF, Intel Xeon E5-2699 v4)

SPECint2006 = 73.5

SPECint_base2006 = 71.6

CPU2006 license: 001176

Test sponsor: Supermicro

Tested by: Supermicro

Test date: Mar-2016

Hardware Availability: Mar-2016

Software Availability: Sep-2015

Peak Optimization Flags

C benchmarks:

400.perlbench: -xCORE-AVX2(pass 2) -prof-gen:threadsafe(pass 1)
-ipo(pass 2) -O3(pass 2) -no-prec-div(pass 2)
-par-num-threads=1(pass 1) -prof-use(pass 2) -opt-prefetch
-ansi-alias

401.bzip2: -xCORE-AVX2(pass 2) -prof-gen:threadsafe(pass 1)
-ipo(pass 2) -O3(pass 2) -no-prec-div
-par-num-threads=1(pass 1) -prof-use(pass 2) -auto-ilp32
-opt-prefetch -ansi-alias

403.gcc: -xCORE-AVX2 -ipo -O3 -no-prec-div -inline-calloc
-opt-malloc-options=3 -auto-ilp32

429.mcf: -xCORE-AVX2 -ipo -O3 -no-prec-div -parallel
-opt-prefetch -auto-p32

445.gobmk: -xCORE-AVX2(pass 2) -prof-gen:threadsafe(pass 1)
-prof-use(pass 2) -par-num-threads=1(pass 1) -ansi-alias

456.hmmer: basepeak = yes

458.sjeng: -xCORE-AVX2(pass 2) -prof-gen:threadsafe(pass 1)
-ipo(pass 2) -O3(pass 2) -no-prec-div(pass 2)
-par-num-threads=1(pass 1) -prof-use(pass 2) -unroll4

462.libquantum: basepeak = yes

464.h264ref: basepeak = yes

C++ benchmarks:

471.omnetpp: -xCORE-AVX2(pass 2) -prof-gen:threadsafe(pass 1)
-ipo(pass 2) -O3(pass 2) -no-prec-div(pass 2)
-par-num-threads=1(pass 1) -prof-use(pass 2)
-opt-ra-region-strategy=block -ansi-alias
-Wl,-z,muldefs -L/sh -lsmartheap

473.astar: -xCORE-AVX2 -ipo -O3 -no-prec-div -opt-prefetch
-auto-p32 -Wl,-z,muldefs -L/sh -lsmartheap64

483.xalancbmk: -xCORE-AVX2 -ipo -O3 -no-prec-div -opt-prefetch
-ansi-alias -Wl,-z,muldefs -L/sh -lsmartheap



SPEC CINT2006 Result

Copyright 2006-2016 Standard Performance Evaluation Corporation

Supermicro

SuperServer 6028TP-HTFR
(X10DRT-PIBF, Intel Xeon E5-2699 v4)

SPECint2006 = 73.5

SPECint_base2006 = 71.6

CPU2006 license: 001176

Test sponsor: Supermicro

Tested by: Supermicro

Test date: Mar-2016

Hardware Availability: Mar-2016

Software Availability: Sep-2015

Peak Other Flags

C benchmarks:

403.gcc: -Dalloca=_alloca

The flags files that were used to format this result can be browsed at

<http://www.spec.org/cpu2006/flags/Intel-ic16.0-official-linux64.html>

<http://www.spec.org/cpu2006/flags/Supermicro-Platform-Settings-V1.2-revH.html>

You can also download the XML flags sources by saving the following links:

<http://www.spec.org/cpu2006/flags/Intel-ic16.0-official-linux64.xml>

<http://www.spec.org/cpu2006/flags/Supermicro-Platform-Settings-V1.2-revH.xml>

SPEC and SPECint are registered trademarks of the Standard Performance Evaluation Corporation. All other brand and product names appearing in this result are trademarks or registered trademarks of their respective holders.

For questions about this result, please contact the tester.
For other inquiries, please contact webmaster@spec.org.

Tested with SPEC CPU2006 v1.2.
Report generated on Thu Jun 30 12:43:48 2016 by SPEC CPU2006 PS/PDF formatter v6932.
Originally published on 4 April 2016.