



SPEC® CINT2006 Result

Copyright 2006-2016 Standard Performance Evaluation Corporation

Lenovo Group Limited

SPECint®2006 = 59.7

Lenovo System x3850 X6 Essential
(2.10 GHz, Intel Xeon E7-4850 v4)

SPECint_base2006 = 57.7

CPU2006 license: 9017

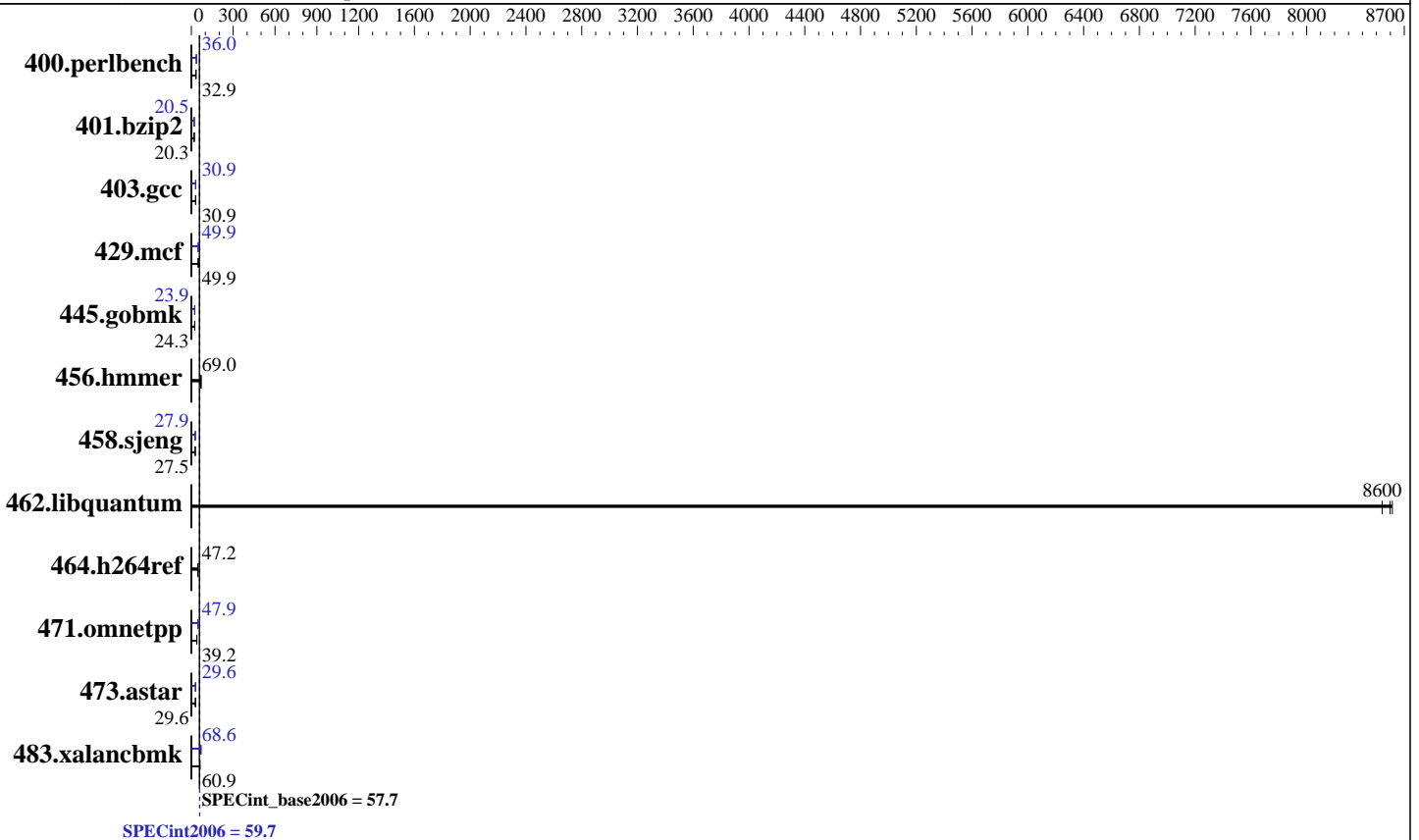
Test date: Jul-2016

Test sponsor: Lenovo Group Limited

Hardware Availability: Jun-2016

Tested by: Lenovo Group Limited

Software Availability: Dec-2015



Hardware

CPU Name: Intel Xeon E7-4850 v4
 CPU Characteristics: Intel Turbo Boost Technology up to 2.80 GHz
 CPU MHz: 2100
 FPU: Integrated
 CPU(s) enabled: 64 cores, 4 chips, 16 cores/chip
 CPU(s) orderable: 2,4 chips
 Primary Cache: 32 KB I + 32 KB D on chip per core
 Secondary Cache: 256 KB I+D on chip per core
 L3 Cache: 40 MB I+D on chip per chip
 Other Cache: None
 Memory: 512 GB (16 x 32 GB 2Rx4 PC4-2133P-R, running at 1333 MHz)
 Disk Subsystem: 1 x 800 GB SATA SSD
 Other Hardware: None

Software

Operating System: SUSE Linux Enterprise Server 12 SP1 (x86_64)
 Kernel 3.12.49-11-default
 Compiler: C/C++; Version 16.0.0.101 of Intel C++ Studio XE for Linux
 Auto Parallel: Yes
 File System: xfs
 System State: Run level 3 (multi-user)
 Base Pointers: 32/64-bit
 Peak Pointers: 32/64-bit
 Other Software: Microquill SmartHeap V10.2



SPEC CINT2006 Result

Copyright 2006-2016 Standard Performance Evaluation Corporation

Lenovo Group Limited

SPECint2006 = **59.7**

Lenovo System x3850 X6 Essential
(2.10 GHz, Intel Xeon E7-4850 v4)

SPECint_base2006 = **57.7**

CPU2006 license: 9017

Test date: Jul-2016

Test sponsor: Lenovo Group Limited

Hardware Availability: Jun-2016

Tested by: Lenovo Group Limited

Software Availability: Dec-2015

Results Table

Benchmark	Base						Peak					
	Seconds	Ratio	Seconds	Ratio	Seconds	Ratio	Seconds	Ratio	Seconds	Ratio	Seconds	Ratio
400.perlbench	<u>297</u>	<u>32.9</u>	298	32.8	295	33.1	<u>272</u>	<u>36.0</u>	271	36.0	272	36.0
401.bzip2	475	20.3	477	20.2	<u>476</u>	<u>20.3</u>	472	20.4	471	20.5	<u>471</u>	<u>20.5</u>
403.gcc	<u>260</u>	<u>30.9</u>	261	30.9	260	30.9	259	31.0	263	30.6	<u>260</u>	<u>30.9</u>
429.mcf	181	50.4	<u>183</u>	<u>49.9</u>	187	48.8	185	49.4	<u>183</u>	<u>49.9</u>	182	50.1
445.gobmk	432	24.3	433	24.2	<u>433</u>	<u>24.3</u>	440	23.9	439	23.9	<u>439</u>	<u>23.9</u>
456.hammer	135	69.0	136	68.5	<u>135</u>	<u>69.0</u>	135	69.0	136	68.5	<u>135</u>	<u>69.0</u>
458.sjeng	440	27.5	<u>440</u>	<u>27.5</u>	439	27.5	434	27.9	435	27.8	<u>434</u>	<u>27.9</u>
462.libquantum	<u>2.41</u>	<u>8600</u>	2.43	8540	2.41	8610	<u>2.41</u>	<u>8600</u>	2.43	8540	2.41	8610
464.h264ref	469	47.2	<u>468</u>	<u>47.2</u>	467	47.4	469	47.2	<u>468</u>	<u>47.2</u>	467	47.4
471.omnetpp	<u>159</u>	<u>39.2</u>	159	39.3	160	39.1	<u>131</u>	<u>47.9</u>	130	47.9	131	47.8
473.astar	<u>237</u>	<u>29.6</u>	238	29.5	237	29.7	<u>237</u>	<u>29.6</u>	237	29.6	239	29.4
483.xalancbmk	<u>113</u>	<u>60.9</u>	113	61.1	114	60.7	101	68.6	101	68.4	<u>101</u>	<u>68.6</u>

Results appear in the order in which they were run. Bold underlined text indicates a median measurement.

Submit Notes

The config file option 'submit' was used.

Operating System Notes

Stack size set to unlimited using "ulimit -s unlimited"

Platform Notes

BIOS Configuration:

Operating Mode set to "Maximum Performance"

Hyper-Threading set to Disable

Sysinfo program /home/cpu2006-1.2-ic16.0/config/sysinfo.rev6914

\$Rev: 6914 \$ \$Date:: 2014-06-25 #\$ e3fbb8667b5a285932ceab81e28219e1

running on Draco-02 Tue Jul 12 17:45:20 2016

This section contains SUT (System Under Test) info as seen by some common utilities. To remove or add to this section, see:

<http://www.spec.org/cpu2006/Docs/config.html#sysinfo>

From /proc/cpuinfo

model name : Intel(R) Xeon(R) CPU E7-4850 v4 @ 2.10GHz

4 "physical id"s (chips)

64 "processors"

cores, siblings (Caution: counting these is hw and system dependent. The following excerpts from /proc/cpuinfo might not be reliable. Use with caution.)

cpu cores : 16

Continued on next page

Standard Performance Evaluation Corporation

info@spec.org

<http://www.spec.org/>

Page 2



SPEC CINT2006 Result

Copyright 2006-2016 Standard Performance Evaluation Corporation

Lenovo Group Limited

SPECint2006 = 59.7

Lenovo System x3850 X6 Essential
(2.10 GHz, Intel Xeon E7-4850 v4)

SPECint_base2006 = 57.7

CPU2006 license: 9017

Test date: Jul-2016

Test sponsor: Lenovo Group Limited

Hardware Availability: Jun-2016

Tested by: Lenovo Group Limited

Software Availability: Dec-2015

Platform Notes (Continued)

```

siblings      : 16
physical 0: cores 0 1 2 3 4 5 6 7 8 9 10 11 12 13 14 15
physical 1: cores 0 1 2 3 4 5 6 7 8 9 10 11 12 13 14 15
physical 2: cores 0 1 2 3 4 5 6 7 8 9 10 11 12 13 14 15
physical 3: cores 0 1 2 3 4 5 6 7 8 9 10 11 12 13 14 15
cache size   : 40960 KB

```

From /proc/meminfo

```

MemTotal:      529163816 kB
HugePages_Total: 0
Hugepagesize:   2048 kB

```

From /etc/*release* /etc/*version*

```

SuSE-release:
SUSE Linux Enterprise Server 12 (x86_64)
VERSION = 12
PATCHLEVEL = 1
# This file is deprecated and will be removed in a future service pack or
# release.
# Please check /etc/os-release for details about this release.
os-release:
NAME="SLES"
VERSION="12-SP1"
VERSION_ID="12.1"
PRETTY_NAME="SUSE Linux Enterprise Server 12 SP1"
ID="sles"
ANSI_COLOR="0;32"
CPE_NAME="cpe:/o:suse:sles:12:sp1"

```

uname -a:

```

Linux Draco-02 3.12.49-11-default #1 SMP Wed Nov 11 20:52:43 UTC 2015
(8d714a0) x86_64 x86_64 x86_64 GNU/Linux

```

run-level 3 Jul 12 17:42

SPEC is set to: /home/cpu2006-1.2-ic16.0

```

Filesystem      Type  Size  Used Avail Use% Mounted on
/dev/sda4        xfs   688G  4.9G  683G   1% /home

```

Additional information from dmidecode:

Warning: Use caution when you interpret this section. The 'dmidecode' program reads system data which is "intended to allow hardware to be accurately determined", but the intent may not be met, as there are frequent changes to hardware, firmware, and the "DMTF SMBIOS" standard.

BIOS LENOVO -[A9E135CUS-3.10]- 06/16/2016

Memory:

```

16x Hynix HMA84GR7MFR4N-UH 32 GB 2 rank 2400 MHz, configured at 1333 MHz
80x NO DIMM Unknown

```

(End of data from sysinfo program)



SPEC CINT2006 Result

Copyright 2006-2016 Standard Performance Evaluation Corporation

Lenovo Group Limited

SPECint2006 = 59.7

Lenovo System x3850 X6 Essential
(2.10 GHz, Intel Xeon E7-4850 v4)

SPECint_base2006 = 57.7

CPU2006 license: 9017

Test date: Jul-2016

Test sponsor: Lenovo Group Limited

Hardware Availability: Jun-2016

Tested by: Lenovo Group Limited

Software Availability: Dec-2015

General Notes

Environment variables set by runspec before the start of the run:

KMP_AFFINITY = "granularity=fine,compact"

LD_LIBRARY_PATH = "/home/cpu2006-1.2-ic16.0/libs/32:/home/cpu2006-1.2-ic16.0/libs/64:/home/cpu2006-1.2-ic16.0/sh"

OMP_NUM_THREADS = "64"

Binaries compiled on a system with 1x Intel Core i5-4670K CPU + 32GB memory using RedHat EL 7.1

Transparent Huge Pages enabled with:

echo always > /sys/kernel/mm/transparent_hugepage/enabled

Base Compiler Invocation

C benchmarks:

icc -m64

C++ benchmarks:

icpc -m64

Base Portability Flags

400.perlbench: -DSPEC_CPU_LP64 -DSPEC_CPU_LINUX_X64

401.bzip2: -DSPEC_CPU_LP64

403.gcc: -DSPEC_CPU_LP64

429.mcf: -DSPEC_CPU_LP64

445.gobmk: -DSPEC_CPU_LP64

456.hmmer: -DSPEC_CPU_LP64

458.sjeng: -DSPEC_CPU_LP64

462.libquantum: -DSPEC_CPU_LP64 -DSPEC_CPU_LINUX

464.h264ref: -DSPEC_CPU_LP64

471.omnetpp: -DSPEC_CPU_LP64

473.astar: -DSPEC_CPU_LP64

483.xalancbmk: -DSPEC_CPU_LP64 -DSPEC_CPU_LINUX

Base Optimization Flags

C benchmarks:

-xCORE-AVX2 -ipo -O3 -no-prec-div -parallel -opt-prefetch -auto-p32

C++ benchmarks:

-xCORE-AVX2 -ipo -O3 -no-prec-div -opt-prefetch -auto-p32

-Wl,-z,muldefs -L/sh -lsmartheap64



SPEC CINT2006 Result

Copyright 2006-2016 Standard Performance Evaluation Corporation

Lenovo Group Limited

SPECint2006 = 59.7

Lenovo System x3850 X6 Essential
(2.10 GHz, Intel Xeon E7-4850 v4)

SPECint_base2006 = 57.7

CPU2006 license: 9017

Test date: Jul-2016

Test sponsor: Lenovo Group Limited

Hardware Availability: Jun-2016

Tested by: Lenovo Group Limited

Software Availability: Dec-2015

Base Other Flags

C benchmarks:

403.gcc: -Dalloca=_alloca

Peak Compiler Invocation

C benchmarks (except as noted below):

icc -m64

400.perlbench: icc -m32 -L/opt/intel/compilers_and_libraries_2016/linux/compiler/lib/ia32_lin

445.gobmk: icc -m32 -L/opt/intel/compilers_and_libraries_2016/linux/compiler/lib/ia32_lin

C++ benchmarks (except as noted below):

icpc -m32 -L/opt/intel/compilers_and_libraries_2016/linux/compiler/lib/ia32_lin

473.astar: icpc -m64

Peak Portability Flags

400.perlbench: -D_FILE_OFFSET_BITS=64 -DSPEC_CPU_LINUX_IA32

401.bzip2: -DSPEC_CPU_LP64

403.gcc: -DSPEC_CPU_LP64

429.mcf: -DSPEC_CPU_LP64

445.gobmk: -D_FILE_OFFSET_BITS=64

456.hmmmer: -DSPEC_CPU_LP64

458.sjeng: -DSPEC_CPU_LP64

462.libquantum: -DSPEC_CPU_LP64 -DSPEC_CPU_LINUX

464.h264ref: -DSPEC_CPU_LP64

471.omnetpp: -D_FILE_OFFSET_BITS=64

473.astar: -DSPEC_CPU_LP64

483.xalancbmk: -D_FILE_OFFSET_BITS=64 -DSPEC_CPU_LINUX

Peak Optimization Flags

C benchmarks:

400.perlbench: -xCORE-AVX2(pass 2) -prof-gen:threadsafe(pass 1)
-ipo(pass 2) -O3(pass 2) -no-prec-div(pass 2)
-par-num-threads=1(pass 1) -prof-use(pass 2) -opt-prefetch
-ansi-alias

401.bzip2: -xCORE-AVX2(pass 2) -prof-gen:threadsafe(pass 1)
-ipo(pass 2) -O3(pass 2) -no-prec-div
-par-num-threads=1(pass 1) -prof-use(pass 2) -auto-ilp32

Continued on next page



SPEC CINT2006 Result

Copyright 2006-2016 Standard Performance Evaluation Corporation

Lenovo Group Limited

SPECint2006 = 59.7

Lenovo System x3850 X6 Essential
(2.10 GHz, Intel Xeon E7-4850 v4)

SPECint_base2006 = 57.7

CPU2006 license: 9017

Test date: Jul-2016

Test sponsor: Lenovo Group Limited

Hardware Availability: Jun-2016

Tested by: Lenovo Group Limited

Software Availability: Dec-2015

Peak Optimization Flags (Continued)

401.bzip2 (continued):

-opt-prefetch -ansi-alias

403.gcc: -xCORE-AVX2 -ipo -O3 -no-prec-div -inline-calloc

-opt-malloc-options=3 -auto-ilp32

429.mcf: -xCORE-AVX2 -ipo -O3 -no-prec-div -parallel

-opt-prefetch -auto-p32

445.gobmk: -xCORE-AVX2(pass 2) -prof-gen:threadsafe(pass 1)

-prof-use(pass 2) -par-num-threads=1(pass 1) -ansi-alias

456.hmmcr: basepeak = yes

458.sjeng: -xCORE-AVX2(pass 2) -prof-gen:threadsafe(pass 1)

-ipo(pass 2) -O3(pass 2) -no-prec-div(pass 2)

-par-num-threads=1(pass 1) -prof-use(pass 2) -unroll4

462.libquantum: basepeak = yes

464.h264ref: basepeak = yes

C++ benchmarks:

471.omnetpp: -xCORE-AVX2(pass 2) -prof-gen:threadsafe(pass 1)

-ipo(pass 2) -O3(pass 2) -no-prec-div(pass 2)

-par-num-threads=1(pass 1) -prof-use(pass 2)

-opt-ra-region-strategy=block

-ansi-alias

-Wl,-z,muldefs -L/sh -lsmartheap

473.astar: -xCORE-AVX2 -ipo -O3 -no-prec-div -opt-prefetch

-auto-p32 -Wl,-z,muldefs -L/sh -lsmartheap64

483.xalancbmk: -xCORE-AVX2 -ipo -O3 -no-prec-div -opt-prefetch

-ansi-alias -Wl,-z,muldefs -L/sh -lsmartheap

Peak Other Flags

C benchmarks:

403.gcc: -Dalloca=_alloca

The flags files that were used to format this result can be browsed at

<http://www.spec.org/cpu2006/flags/Intel-ic16.0-official-linux64.html>

<http://www.spec.org/cpu2006/flags/Lenovo-Platform-Flags-V1.2-BDW-B.html>



SPEC CINT2006 Result

Copyright 2006-2016 Standard Performance Evaluation Corporation

Lenovo Group Limited

SPECint2006 = 59.7

Lenovo System x3850 X6 Essential
(2.10 GHz, Intel Xeon E7-4850 v4)

SPECint_base2006 = 57.7

CPU2006 license: 9017

Test date: Jul-2016

Test sponsor: Lenovo Group Limited

Hardware Availability: Jun-2016

Tested by: Lenovo Group Limited

Software Availability: Dec-2015

You can also download the XML flags sources by saving the following links:

<http://www.spec.org/cpu2006/flags/Intel-ic16.0-official-linux64.xml>

<http://www.spec.org/cpu2006/flags/Lenovo-Platform-Flags-V1.2-BDW-B.xml>

SPEC and SPECint are registered trademarks of the Standard Performance Evaluation Corporation. All other brand and product names appearing in this result are trademarks or registered trademarks of their respective holders.

For questions about this result, please contact the tester.
For other inquiries, please contact webmaster@spec.org.

Tested with SPEC CPU2006 v1.2.
Report generated on Tue Sep 6 16:57:58 2016 by SPEC CPU2006 PS/PDF formatter v6932.
Originally published on 6 September 2016.