



SPEC® CINT2006 Result

Copyright 2006-2017 Standard Performance Evaluation Corporation

Lenovo Global Technology

SPECint®_rate2006 = 6100

ThinkSystem SR950
(3.00 GHz, Intel Xeon Platinum 8158)

SPECint_rate_base2006 = 5800

CPU2006 license: 9017

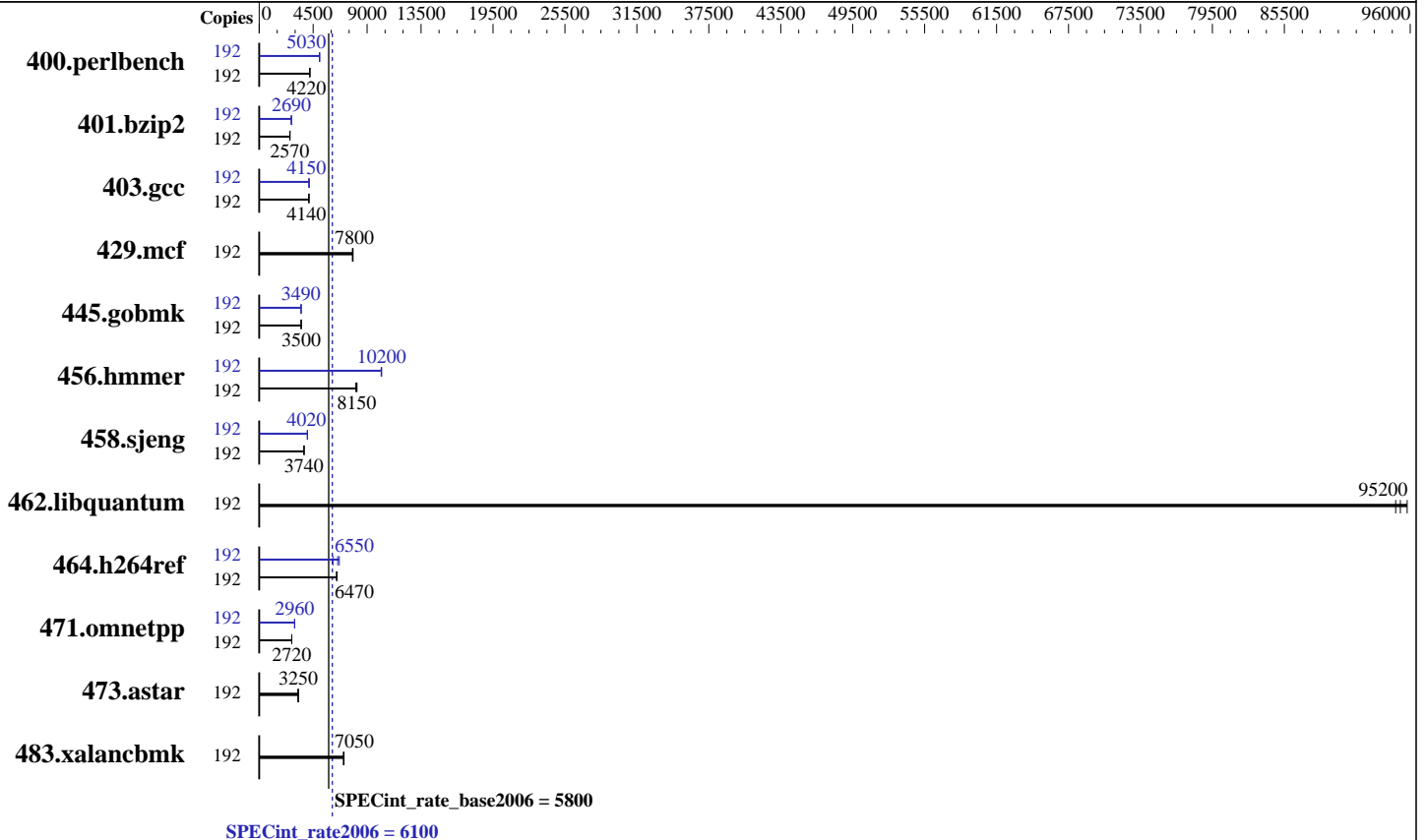
Test date: Aug-2017

Test sponsor: Lenovo Global Technology

Hardware Availability: Sep-2017

Tested by: Lenovo Global Technology

Software Availability: Apr-2017



Hardware

CPU Name: Intel Xeon Platinum 8158
 CPU Characteristics: Intel Turbo Boost Technology up to 3.70 GHz
 CPU MHz: 3000
 FPU: Integrated
 CPU(s) enabled: 96 cores, 8 chips, 12 cores/chip, 2 threads/core
 CPU(s) orderable: 2,4,8 chips
 Primary Cache: 32 KB I + 32 KB D on chip per core
 Secondary Cache: 1 MB I+D on chip per core
 L3 Cache: 24.75 MB I+D on chip per chip
 Other Cache: None
 Memory: 3 TB (96 x 32 GB 2Rx4 PC4-2666V-R)
 Disk Subsystem: 800 GB tmpfs
 Other Hardware: None

Software

Operating System: SUSE Linux Enterprise Server 12 SP2 (x86_64)
 Kernel 4.4.21-69-default
 Compiler: C/C++: Version 17.0.3.191 of Intel C/C++ Compiler for Linux
 Auto Parallel: Yes
 File System: tmpfs
 System State: Run level 3 (multi-user)
 Base Pointers: 32-bit
 Peak Pointers: 32/64-bit
 Other Software: Microquill SmartHeap V10.2



SPEC CINT2006 Result

Copyright 2006-2017 Standard Performance Evaluation Corporation

Lenovo Global Technology

SPECint_rate2006 = 6100

ThinkSystem SR950
(3.00 GHz, Intel Xeon Platinum 8158)

SPECint_rate_base2006 = 5800

CPU2006 license: 9017

Test date: Aug-2017

Test sponsor: Lenovo Global Technology

Hardware Availability: Sep-2017

Tested by: Lenovo Global Technology

Software Availability: Apr-2017

Results Table

Benchmark	Base							Peak						
	Copies	Seconds	Ratio	Seconds	Ratio	Seconds	Ratio	Copies	Seconds	Ratio	Seconds	Ratio	Seconds	Ratio
400.perlbench	192	445	4220	444	4220	444	4230	192	372	5050	373	5030	373	5030
401.bzip2	192	725	2550	722	2570	722	2570	192	688	2690	692	2680	690	2690
403.gcc	192	373	4140	372	4160	373	4140	192	372	4150	371	4170	373	4140
429.mcf	192	224	7830	225	7800	225	7780	192	224	7830	225	7800	225	7780
445.gobmk	192	575	3500	575	3500	575	3500	192	576	3490	576	3500	577	3490
456.hammer	192	220	8150	220	8150	222	8060	192	176	10200	176	10200	175	10200
458.sjeng	192	621	3740	621	3740	622	3740	192	576	4030	578	4020	579	4010
462.libquantum	192	41.6	95700	41.8	95200	42.0	94800	192	41.6	95700	41.8	95200	42.0	94800
464.h264ref	192	657	6470	656	6480	658	6460	192	649	6550	636	6680	691	6150
471.omnetpp	192	441	2720	441	2720	441	2720	192	406	2960	406	2950	406	2960
473.astar	192	416	3240	413	3260	414	3250	192	416	3240	413	3260	414	3250
483.xalancbmk	192	189	7030	187	7070	188	7050	192	189	7030	187	7070	188	7050

Results appear in the order in which they were run. Bold underlined text indicates a median measurement.

Submit Notes

The numactl mechanism was used to bind copies to processors. The config file option 'submit' was used to generate numactl commands to bind each copy to a specific processor. For details, please see the config file.

Operating System Notes

```
Stack size set to unlimited using "ulimit -s unlimited"
Tmpfs filesystem can be set with:
mount -t tmpfs -o size=800g tmpfs /home
Process tuning setting:
echo 50000 > /proc/sys/kernel/sched_cfs_bandwidth_slice_us
echo 240000000 > /proc/sys/kernel/sched_latency_ns
echo 5000000 > /proc/sys/kernel/sched_migration_cost_ns
echo 100000000 > /proc/sys/kernel/sched_min_granularity_ns
echo 150000000 > /proc/sys/kernel/sched_wakeup_granularity_ns
```

Platform Notes

```
BIOS configuration:
Choose Operating Mode set to Maximum Performance
SNC set to Enable
DCU Streamer Prefetcher set to Disable
Stale AtoS set to Enable
LLC dead line alloc set to Disable
Sysinfo program /home/cpu2006-1.2-ic17.0u3/config/sysinfo.rev6993
Revision 6993 of 2015-11-06 (b5e8d4b4eb51ed28d7f98696cbe290c1)
running on Proton8S-SUSE12SP2 Tue Aug 22 17:29:07 2017
```

Continued on next page



SPEC CINT2006 Result

Copyright 2006-2017 Standard Performance Evaluation Corporation

Lenovo Global Technology

SPECint_rate2006 = 6100

ThinkSystem SR950
(3.00 GHz, Intel Xeon Platinum 8158)

SPECint_rate_base2006 = 5800

CPU2006 license: 9017

Test date: Aug-2017

Test sponsor: Lenovo Global Technology

Hardware Availability: Sep-2017

Tested by: Lenovo Global Technology

Software Availability: Apr-2017

Platform Notes (Continued)

This section contains SUT (System Under Test) info as seen by some common utilities. To remove or add to this section, see: <http://www.spec.org/cpu2006/Docs/config.html#sysinfo>

From /proc/cpuinfo

```

model name      : Intel(R) Xeon(R) Platinum 8158 CPU @ 3.00GHz
 8 "physical id"s (chips)
192 "processors"
cores, siblings (Caution: counting these is hw and system dependent. The following excerpts from /proc/cpuinfo might not be reliable. Use with caution.)
cpu cores      : 12
siblings       : 24
physical 0:    : cores 0 1 2 3 4 9 10 16 18 19 25 26
physical 1:    : cores 0 1 2 3 4 8 9 11 17 18 19 20
physical 2:    : cores 0 1 2 3 4 8 9 11 17 18 19 20
physical 3:    : cores 0 1 2 3 4 9 10 16 18 19 25 26
physical 4:    : cores 0 1 2 3 10 17 18 19 24 25 26 27
physical 5:    : cores 0 3 4 5 6 7 16 18 19 20 21 22
physical 6:    : cores 0 1 2 3 4 9 10 16 18 19 25 26
physical 7:    : cores 0 1 2 3 4 9 10 16 18 19 25 26
cache size     : 25344 KB

```

From /proc/meminfo

```

MemTotal:      3170207836 kB
HugePages_Total: 0
Hugepagesize:  2048 kB

```

From /etc/*release* /etc/*version*

```

SuSE-release:
SUSE Linux Enterprise Server 12 (x86_64)
VERSION = 12
PATCHLEVEL = 2
# This file is deprecated and will be removed in a future service pack or
release.
# Please check /etc/os-release for details about this release.
os-release:
NAME="SLES"
VERSION="12-SP2"
VERSION_ID="12.2"
PRETTY_NAME="SUSE Linux Enterprise Server 12 SP2"
ID="sles"
ANSI_COLOR="0;32"
CPE_NAME="cpe:/o:suse:sles:12:sp2"

```

uname -a:

```

Linux Proton8S-SUSE12SP2 4.4.21-69-default #1 SMP Tue Oct 25 10:58:20 UTC
2016 (9464f67) x86_64 x86_64 x86_64 GNU/Linux

```

run-level 3 Aug 22 17:26

Continued on next page



SPEC CINT2006 Result

Copyright 2006-2017 Standard Performance Evaluation Corporation

Lenovo Global Technology

SPECint_rate2006 = 6100

ThinkSystem SR950
(3.00 GHz, Intel Xeon Platinum 8158)

SPECint_rate_base2006 = 5800

CPU2006 license: 9017

Test date: Aug-2017

Test sponsor: Lenovo Global Technology

Hardware Availability: Sep-2017

Tested by: Lenovo Global Technology

Software Availability: Apr-2017

Platform Notes (Continued)

SPEC is set to: /home/cpu2006-1.2-ic17.0u3

Filesystem	Type	Size	Used	Avail	Use%	Mounted on
tmpfs	tmpfs	800G	3.7G	797G	1%	/home

Additional information from dmidecode:

Warning: Use caution when you interpret this section. The 'dmidecode' program reads system data which is "intended to allow hardware to be accurately determined", but the intent may not be met, as there are frequent changes to hardware, firmware, and the "DMTF SMBIOS" standard.

BIOS Lenovo -[PSE105L-1.00]- 06/22/2017

Memory:

96x Samsung M393A4K40BB2-CTD 32 GB 2 rank 2666 MHz

(End of data from sysinfo program)

General Notes

Environment variables set by runspec before the start of the run:

LD_LIBRARY_PATH = "/home/cpu2006-1.2-ic17.0u3/lib/ia32:/home/cpu2006-1.2-ic17.0u3/lib/intel64:/home/cpu2006-1.2-ic17.0u3/sh10.2"

Binaries compiled on a system with 1x Intel Core i7-4790 CPU + 32GB RAM memory using Redhat Enterprise Linux 7.2

Transparent Huge Pages enabled by default

Filesystem page cache cleared with:

shell invocation of 'sync; echo 3 > /proc/sys/vm/drop_caches' prior to run

runspec command invoked through numactl i.e.:

numactl --interleave=all runspec <etc>

Base Compiler Invocation

C benchmarks:

icc -m32 -L/opt/intel/compilers_and_libraries_2017/linux/lib/ia32

C++ benchmarks:

icpc -m32 -L/opt/intel/compilers_and_libraries_2017/linux/lib/ia32

Base Portability Flags

400.perlbench: -D_FILE_OFFSET_BITS=64 -DSPEC_CPU_LINUX_IA32

401.bzip2: -D_FILE_OFFSET_BITS=64

403.gcc: -D_FILE_OFFSET_BITS=64

429.mcf: -D_FILE_OFFSET_BITS=64

445.gobmk: -D_FILE_OFFSET_BITS=64

456.hmmer: -D_FILE_OFFSET_BITS=64

458.sjeng: -D_FILE_OFFSET_BITS=64

Continued on next page

Standard Performance Evaluation Corporation

info@spec.org

http://www.spec.org/



SPEC CINT2006 Result

Copyright 2006-2017 Standard Performance Evaluation Corporation

Lenovo Global Technology

SPECint_rate2006 = 6100

ThinkSystem SR950
(3.00 GHz, Intel Xeon Platinum 8158)

SPECint_rate_base2006 = 5800

CPU2006 license: 9017

Test date: Aug-2017

Test sponsor: Lenovo Global Technology

Hardware Availability: Sep-2017

Tested by: Lenovo Global Technology

Software Availability: Apr-2017

Base Portability Flags (Continued)

462.libquantum: -D_FILE_OFFSET_BITS=64 -DSPEC_CPU_LINUX
464.h264ref: -D_FILE_OFFSET_BITS=64
471.omnetpp: -D_FILE_OFFSET_BITS=64
473.astar: -D_FILE_OFFSET_BITS=64
483.xalancbmk: -D_FILE_OFFSET_BITS=64 -DSPEC_CPU_LINUX

Base Optimization Flags

C benchmarks:

-xCORE-AVX512 -ipo -O3 -no-prec-div -qopt-prefetch
-qopt-mem-layout-trans=3

C++ benchmarks:

-xCORE-AVX512 -ipo -O3 -no-prec-div -qopt-prefetch
-qopt-mem-layout-trans=3 -Wl,-z,muldefs -L/sh10.2 -lsmartheap

Base Other Flags

C benchmarks:

403.gcc: -Dalloca=_alloca

Peak Compiler Invocation

C benchmarks (except as noted below):

icc -m32 -L/opt/intel/compilers_and_libraries_2017/linux/lib/ia32

400.perlbench: icc -m64

401.bzip2: icc -m64

456.hmmer: icc -m64

458.sjeng: icc -m64

C++ benchmarks:

icpc -m32 -L/opt/intel/compilers_and_libraries_2017/linux/lib/ia32

Peak Portability Flags

400.perlbench: -DSPEC_CPU_LP64 -DSPEC_CPU_LINUX_X64

Continued on next page



SPEC CINT2006 Result

Copyright 2006-2017 Standard Performance Evaluation Corporation

Lenovo Global Technology

SPECint_rate2006 = 6100

ThinkSystem SR950
(3.00 GHz, Intel Xeon Platinum 8158)

SPECint_rate_base2006 = 5800

CPU2006 license: 9017

Test date: Aug-2017

Test sponsor: Lenovo Global Technology

Hardware Availability: Sep-2017

Tested by: Lenovo Global Technology

Software Availability: Apr-2017

Peak Portability Flags (Continued)

401.bzip2: -DSPEC_CPU_LP64
 403.gcc: -D_FILE_OFFSET_BITS=64
 429.mcf: -D_FILE_OFFSET_BITS=64
 445.gobmk: -D_FILE_OFFSET_BITS=64
 456.hmmer: -DSPEC_CPU_LP64
 458.sjeng: -DSPEC_CPU_LP64
 462.libquantum: -D_FILE_OFFSET_BITS=64 -DSPEC_CPU_LINUX
 464.h264ref: -D_FILE_OFFSET_BITS=64
 471.omnetpp: -D_FILE_OFFSET_BITS=64
 473.astar: -D_FILE_OFFSET_BITS=64
 483.xalanbmk: -D_FILE_OFFSET_BITS=64 -DSPEC_CPU_LINUX

Peak Optimization Flags

C benchmarks:

400.perlbench: -prof-gen(pass 1) -prof-use(pass 2) -xCORE-AVX512(pass 2)
 -par-num-threads=1(pass 1) -ipo(pass 2) -O3(pass 2)
 -no-prec-div(pass 2) -auto-ilp32 -qopt-mem-layout-trans=3

401.bzip2: -prof-gen(pass 1) -prof-use(pass 2) -xCORE-AVX512(pass 2)
 -par-num-threads=1(pass 1) -ipo(pass 2) -O3(pass 2)
 -no-prec-div(pass 2) -qopt-prefetch -auto-ilp32
 -qopt-mem-layout-trans=3

403.gcc: -xCORE-AVX512 -ipo -O3 -no-prec-div
 -qopt-mem-layout-trans=3

429.mcf: basepeak = yes

445.gobmk: -prof-gen(pass 1) -prof-use(pass 2) -xCORE-AVX512(pass 2)
 -par-num-threads=1(pass 1) -ipo(pass 2) -O3(pass 2)
 -no-prec-div(pass 2) -qopt-mem-layout-trans=3

456.hmmer: -xCORE-AVX512 -ipo -O3 -no-prec-div -unroll2 -auto-ilp32
 -qopt-mem-layout-trans=3

458.sjeng: -prof-gen(pass 1) -prof-use(pass 2) -xCORE-AVX512(pass 2)
 -par-num-threads=1(pass 1) -ipo(pass 2) -O3(pass 2)
 -no-prec-div(pass 2) -unroll14 -auto-ilp32
 -qopt-mem-layout-trans=3

462.libquantum: basepeak = yes

464.h264ref: -prof-gen(pass 1) -prof-use(pass 2) -xCORE-AVX512(pass 2)
 -par-num-threads=1(pass 1) -ipo(pass 2) -O3(pass 2)
 -no-prec-div(pass 2) -unroll2 -qopt-mem-layout-trans=3

Continued on next page



SPEC CINT2006 Result

Copyright 2006-2017 Standard Performance Evaluation Corporation

Lenovo Global Technology

SPECint_rate2006 = 6100

ThinkSystem SR950
(3.00 GHz, Intel Xeon Platinum 8158)

SPECint_rate_base2006 = 5800

CPU2006 license: 9017

Test date: Aug-2017

Test sponsor: Lenovo Global Technology

Hardware Availability: Sep-2017

Tested by: Lenovo Global Technology

Software Availability: Apr-2017

Peak Optimization Flags (Continued)

C++ benchmarks:

```
471.omnetpp: -prof-gen(pass 1) -prof-use(pass 2) -xCORE-AVX512(pass 2)
             -par-num-threads=1(pass 1) -ipo(pass 2) -O3(pass 2)
             -no-prec-div(pass 2)
             -qopt-ra-region-strategy=block
             -qopt-mem-layout-trans=3 -Wl,-z,muldefs
             -L/shl0.2 -lsmartheap
```

473.astar: basepeak = yes

483.xalancbmk: basepeak = yes

Peak Other Flags

C benchmarks:

```
403.gcc: -Dalloca=_alloca
```

The flags files that were used to format this result can be browsed at

<http://www.spec.org/cpu2006/flags/Intel-ic17.0-official-linux64-revF.html>

<http://www.spec.org/cpu2006/flags/Lenovo-Platform-Flags-V1.2-SKL-C.20171004.html>

You can also download the XML flags sources by saving the following links:

<http://www.spec.org/cpu2006/flags/Intel-ic17.0-official-linux64-revF.xml>

<http://www.spec.org/cpu2006/flags/Lenovo-Platform-Flags-V1.2-SKL-C.20171004.xml>

SPEC and SPECint are registered trademarks of the Standard Performance Evaluation Corporation. All other brand and product names appearing in this result are trademarks or registered trademarks of their respective holders.

For questions about this result, please contact the tester.
For other inquiries, please contact webmaster@spec.org.

Tested with SPEC CPU2006 v1.2.

Report generated on Wed Oct 4 12:34:34 2017 by SPEC CPU2006 PS/PDF formatter v6932.

Originally published on 3 October 2017.