



SPEC® CINT2006 Result

Copyright 2006-2017 Standard Performance Evaluation Corporation

Dell Inc.

PowerEdge R940
(Intel Xeon Platinum 8170, 2.10 GHz)

SPECint®_rate2006 = 4690

SPECint_rate_base2006 = 4490

CPU2006 license: 55

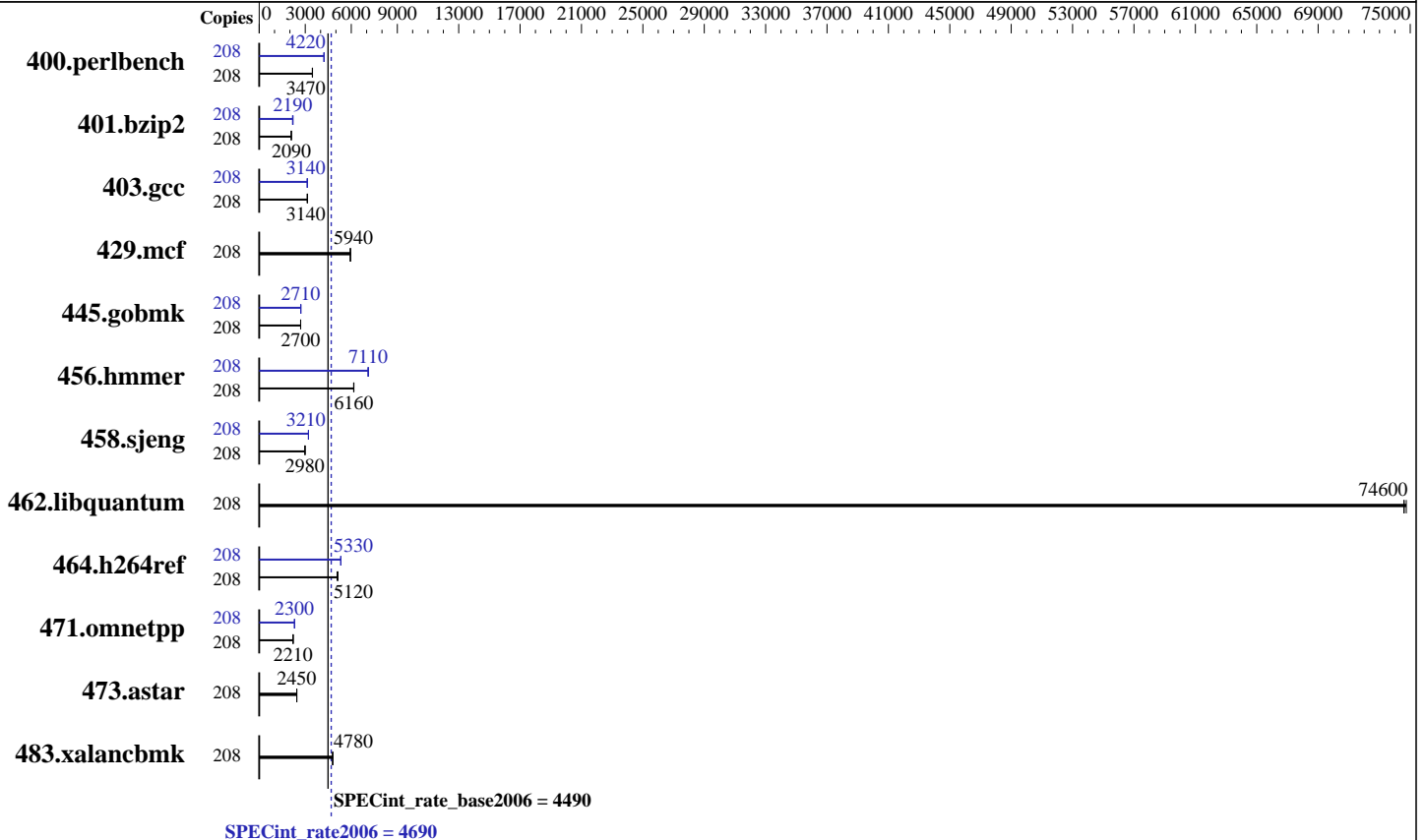
Test sponsor: Dell Inc.

Tested by: Dell Inc.

Test date: Oct-2017

Hardware Availability: Jul-2017

Software Availability: Apr-2017



Hardware

CPU Name: Intel Xeon Platinum 8170
 CPU Characteristics: Intel Turbo Boost Technology up to 3.70 GHz
 CPU MHz: 2100
 FPU: Integrated
 CPU(s) enabled: 104 cores, 4 chips, 26 cores/chip, 2 threads/core
 CPU(s) orderable: 2,4 chip
 Primary Cache: 32 KB I + 32 KB D on chip per core
 Secondary Cache: 1 MB I+D on chip per core
 L3 Cache: 35.75 MB I+D on chip per chip
 Other Cache: None
 Memory: 768 GB (48 x 16 GB 2Rx8 PC4-2666V-R)
 Disk Subsystem: 1 x 900 GB 15K RPM SAS12
 Other Hardware: None

Software

Operating System: SUSE Linux Enterprise Server 12 (x86_64) SP2 4.4.21-69-default
 Compiler: C/C++: Version 17.0.3.191 of Intel C/C++ Compiler for Linux
 Auto Parallel: Yes
 File System: xfs
 System State: Run level 3 (multi-user)
 Base Pointers: 32-bit
 Peak Pointers: 32/64-bit
 Other Software: Microquill SmartHeap V10.2



SPEC CINT2006 Result

Copyright 2006-2017 Standard Performance Evaluation Corporation

Dell Inc.

PowerEdge R940
(Intel Xeon Platinum 8170, 2.10 GHz)

SPECint_rate2006 = 4690

SPECint_rate_base2006 = 4490

CPU2006 license: 55
Test sponsor: Dell Inc.
Tested by: Dell Inc.

Test date: Oct-2017
Hardware Availability: Jul-2017
Software Availability: Apr-2017

Results Table

Benchmark	Base							Peak						
	Copies	Seconds	Ratio	Seconds	Ratio	Seconds	Ratio	Copies	Seconds	Ratio	Seconds	Ratio	Seconds	Ratio
400.perlbench	208	587	3460	586	3470	585	3470	208	482	4220	482	4220	480	4240
401.bzip2	208	956	2100	963	2080	958	2090	208	916	2190	910	2210	924	2170
403.gcc	208	535	3130	534	3140	531	3150	208	533	3140	533	3140	537	3120
429.mcf	208	320	5940	319	5940	319	5950	208	320	5940	319	5940	319	5950
445.gobmk	208	807	2700	808	2700	808	2700	208	805	2710	805	2710	805	2710
456.hammer	208	315	6160	315	6160	314	6170	208	272	7120	274	7080	273	7110
458.sjeng	208	843	2980	845	2980	842	2990	208	783	3210	785	3210	784	3210
462.libquantum	208	57.8	74600	57.8	74600	57.7	74700	208	57.8	74600	57.8	74600	57.7	74700
464.h264ref	208	906	5080	898	5130	899	5120	208	864	5330	868	5300	864	5330
471.omnetpp	208	589	2210	588	2210	588	2210	208	565	2300	565	2300	565	2300
473.astar	208	597	2450	596	2450	596	2450	208	597	2450	596	2450	596	2450
483.xalancbmk	208	299	4800	300	4780	300	4780	208	299	4800	300	4780	300	4780

Results appear in the order in which they were run. Bold underlined text indicates a median measurement.

Submit Notes

The numactl mechanism was used to bind copies to processors. The config file option 'submit' was used to generate numactl commands to bind each copy to a specific processor. For details, please see the config file.

Operating System Notes

Kernel boot parameter: nohz_full=1-207
Stack size set to unlimited using "ulimit -s unlimited"

Platform Notes

BIOS settings:
Logical Processor Enabled
Virtualization Technology Disabled
Sub NUMA Cluster Enabled
System Profile set to Custom
CPU Performance set to Maximum Performance
C1E Disabled
C States set to Autonomous
Uncore Frequency set to Dynamic
Memory Patrol Scrub Disabled
Energy Efficiency Policy set to Performance
CPU Interconnect Bus Link Power Management Disabled
PCI ASPM L1 Link Power Management Disabled
Sysinfo program /home/cpu2006/config/sysinfo.rev6993
Revision 6993 of 2015-11-06 (b5e8d4b4eb51ed28d7f98696cbe290c1)
running on linux-2h8y Wed Oct 18 18:05:46 2017

Continued on next page



SPEC CINT2006 Result

Copyright 2006-2017 Standard Performance Evaluation Corporation

Dell Inc.

SPECint_rate2006 = 4690

PowerEdge R940
(Intel Xeon Platinum 8170, 2.10 GHz)

SPECint_rate_base2006 = 4490

CPU2006 license: 55

Test date: Oct-2017

Test sponsor: Dell Inc.

Hardware Availability: Jul-2017

Tested by: Dell Inc.

Software Availability: Apr-2017

Platform Notes (Continued)

This section contains SUT (System Under Test) info as seen by some common utilities. To remove or add to this section, see: <http://www.spec.org/cpu2006/Docs/config.html#sysinfo>

From /proc/cpuinfo

```

model name      : Intel(R) Xeon(R) Platinum 8170 CPU @ 2.10GHz
 4 "physical id"s (chips)
 208 "processors"
cores, siblings (Caution: counting these is hw and system dependent. The
following excerpts from /proc/cpuinfo might not be reliable. Use with
caution.)
cpu cores      : 26
siblings       : 52
physical 0:    cores 0 1 2 3 4 5 6 8 9 10 11 12 13 16 17 18 19 20 21 22 24 25
                26 27 28 29
physical 1:    cores 0 1 2 3 4 5 6 8 9 10 11 12 13 16 17 18 19 20 21 22 24 25
                26 27 28 29
physical 2:    cores 0 1 2 3 4 5 6 8 9 10 11 12 13 16 17 18 19 20 21 22 24 25
                26 27 28 29
physical 3:    cores 0 1 2 3 4 5 6 8 9 10 11 12 13 16 17 18 19 20 21 22 24 25
                26 27 28 29
cache size     : 36608 KB

```

From /proc/meminfo

```

MemTotal:      791224272 kB
HugePages_Total: 0
Hugepagesize:  2048 kB

```

```

/usr/bin/lsb_release -d
SUSE Linux Enterprise Server 12 SP2

```

From /etc/*release* /etc/*version*

```

SuSE-release:
SUSE Linux Enterprise Server 12 (x86_64)
VERSION = 12
PATCHLEVEL = 2
# This file is deprecated and will be removed in a future service pack or
release.
# Please check /etc/os-release for details about this release.
os-release:
NAME="SLES"
VERSION="12-SP2"
VERSION_ID="12.2"
PRETTY_NAME="SUSE Linux Enterprise Server 12 SP2"
ID="sles"
ANSI_COLOR="0;32"
CPE_NAME="cpe:/o:suse:sles:12:sp2"

```

uname -a:

```

Linux linux-2h8y 4.4.21-69-default #1 SMP Tue Oct 25 10:58:20 UTC 2016
(9464f67) x86_64 x86_64 x86_64 GNU/Linux
Continued on next page

```



SPEC CINT2006 Result

Copyright 2006-2017 Standard Performance Evaluation Corporation

Dell Inc.

PowerEdge R940
(Intel Xeon Platinum 8170, 2.10 GHz)

SPECint_rate2006 = 4690

SPECint_rate_base2006 = 4490

CPU2006 license: 55
Test sponsor: Dell Inc.
Tested by: Dell Inc.

Test date: Oct-2017
Hardware Availability: Jul-2017
Software Availability: Apr-2017

Platform Notes (Continued)

run-level 3 Oct 18 18:05

SPEC is set to: /home/cpu2006

Filesystem	Type	Size	Used	Avail	Use%	Mounted on
/dev/sda4	xfs	796G	17G	779G	3%	/home

Additional information from dmidecode:

Warning: Use caution when you interpret this section. The 'dmidecode' program reads system data which is "intended to allow hardware to be accurately determined", but the intent may not be met, as there are frequent changes to hardware, firmware, and the "DMTF SMBIOS" standard.

BIOS Dell Inc. 1.1.7 08/10/2017

Memory:

48x 00CE063200CE M393A2K43BB1-CTD 16 GB 2 rank 2666 MHz

(End of data from sysinfo program)

General Notes

Environment variables set by runspec before the start of the run:

LD_LIBRARY_PATH = "/home/cpu2006/lib/ia32:/home/cpu2006/lib/intel64:/home/cpu2006/sh10.2"

Binaries compiled on a system with 1x Intel Core i7-4790 CPU + 32GB RAM memory using Redhat Enterprise Linux 7.2

Transparent Huge Pages enabled by default

Filesystem page cache cleared with:

shell invocation of 'sync; echo 3 > /proc/sys/vm/drop_caches' prior to run

runspec command invoked through numactl i.e.:

numactl --interleave=all runspec <etc>

Base Compiler Invocation

C benchmarks:

icc -m32 -L/opt/intel/compilers_and_libraries_2017/linux/lib/ia32

C++ benchmarks:

icpc -m32 -L/opt/intel/compilers_and_libraries_2017/linux/lib/ia32

Base Portability Flags

400.perlbench: -D_FILE_OFFSET_BITS=64 -DSPEC_CPU_LINUX_IA32

401.bzip2: -D_FILE_OFFSET_BITS=64

403.gcc: -D_FILE_OFFSET_BITS=64

429.mcf: -D_FILE_OFFSET_BITS=64

Continued on next page



SPEC CINT2006 Result

Copyright 2006-2017 Standard Performance Evaluation Corporation

Dell Inc.

PowerEdge R940
(Intel Xeon Platinum 8170, 2.10 GHz)

SPECint_rate2006 = 4690

SPECint_rate_base2006 = 4490

CPU2006 license: 55
Test sponsor: Dell Inc.
Tested by: Dell Inc.

Test date: Oct-2017
Hardware Availability: Jul-2017
Software Availability: Apr-2017

Base Portability Flags (Continued)

445.gobmk: -D_FILE_OFFSET_BITS=64
456.hmmer: -D_FILE_OFFSET_BITS=64
458.sjeng: -D_FILE_OFFSET_BITS=64
462.libquantum: -D_FILE_OFFSET_BITS=64 -DSPEC_CPU_LINUX
464.h264ref: -D_FILE_OFFSET_BITS=64
471.omnetpp: -D_FILE_OFFSET_BITS=64
473.astar: -D_FILE_OFFSET_BITS=64
483.xalancbmk: -D_FILE_OFFSET_BITS=64 -DSPEC_CPU_LINUX

Base Optimization Flags

C benchmarks:
-xCORE-AVX512 -ipo -O3 -no-prec-div -qopt-prefetch
-qopt-mem-layout-trans=3

C++ benchmarks:
-xCORE-AVX512 -ipo -O3 -no-prec-div -qopt-prefetch
-qopt-mem-layout-trans=3 -Wl,-z,muldefs -L/sh10.2 -lsmartheap

Base Other Flags

C benchmarks:
403.gcc: -Dalloca=_alloca

Peak Compiler Invocation

C benchmarks (except as noted below):
icc -m32 -L/opt/intel/compilers_and_libraries_2017/linux/lib/ia32

400.perlbench: icc -m64

401.bzip2: icc -m64

456.hmmer: icc -m64

458.sjeng: icc -m64

C++ benchmarks:
icpc -m32 -L/opt/intel/compilers_and_libraries_2017/linux/lib/ia32



SPEC CINT2006 Result

Copyright 2006-2017 Standard Performance Evaluation Corporation

Dell Inc.

PowerEdge R940
(Intel Xeon Platinum 8170, 2.10 GHz)

SPECint_rate2006 = 4690

SPECint_rate_base2006 = 4490

CPU2006 license: 55
Test sponsor: Dell Inc.
Tested by: Dell Inc.

Test date: Oct-2017
Hardware Availability: Jul-2017
Software Availability: Apr-2017

Peak Portability Flags

400.perlbench: -DSPEC_CPU_LP64 -DSPEC_CPU_LINUX_X64
401.bzip2: -DSPEC_CPU_LP64
403.gcc: -D_FILE_OFFSET_BITS=64
429.mcf: -D_FILE_OFFSET_BITS=64
445.gobmk: -D_FILE_OFFSET_BITS=64
456.hmmer: -DSPEC_CPU_LP64
458.sjeng: -DSPEC_CPU_LP64
462.libquantum: -D_FILE_OFFSET_BITS=64 -DSPEC_CPU_LINUX
464.h264ref: -D_FILE_OFFSET_BITS=64
471.omnetpp: -D_FILE_OFFSET_BITS=64
473.astar: -D_FILE_OFFSET_BITS=64
483.xalancbmk: -D_FILE_OFFSET_BITS=64 -DSPEC_CPU_LINUX

Peak Optimization Flags

C benchmarks:

400.perlbench: -prof-gen(pass 1) -prof-use(pass 2) -xCORE-AVX512(pass 2)
-par-num-threads=1(pass 1) -ipo(pass 2) -O3(pass 2)
-no-prec-div(pass 2) -auto-ilp32 -qopt-mem-layout-trans=3

401.bzip2: -prof-gen(pass 1) -prof-use(pass 2) -xCORE-AVX512(pass 2)
-par-num-threads=1(pass 1) -ipo(pass 2) -O3(pass 2)
-no-prec-div(pass 2) -qopt-prefetch -auto-ilp32
-qopt-mem-layout-trans=3

403.gcc: -xCORE-AVX512 -ipo -O3 -no-prec-div
-qopt-mem-layout-trans=3

429.mcf: basepeak = yes

445.gobmk: -prof-gen(pass 1) -prof-use(pass 2) -xCORE-AVX512(pass 2)
-par-num-threads=1(pass 1) -ipo(pass 2) -O3(pass 2)
-no-prec-div(pass 2) -qopt-mem-layout-trans=3

456.hmmer: -xCORE-AVX512 -ipo -O3 -no-prec-div -unroll2 -auto-ilp32
-qopt-mem-layout-trans=3

458.sjeng: -prof-gen(pass 1) -prof-use(pass 2) -xCORE-AVX512(pass 2)
-par-num-threads=1(pass 1) -ipo(pass 2) -O3(pass 2)
-no-prec-div(pass 2) -unroll4 -auto-ilp32
-qopt-mem-layout-trans=3

462.libquantum: basepeak = yes

464.h264ref: -prof-gen(pass 1) -prof-use(pass 2) -xCORE-AVX512(pass 2)
-par-num-threads=1(pass 1) -ipo(pass 2) -O3(pass 2)
-no-prec-div(pass 2) -unroll2 -qopt-mem-layout-trans=3

Continued on next page



SPEC CINT2006 Result

Copyright 2006-2017 Standard Performance Evaluation Corporation

Dell Inc.

PowerEdge R940
(Intel Xeon Platinum 8170, 2.10 GHz)

SPECint_rate2006 = 4690

SPECint_rate_base2006 = 4490

CPU2006 license: 55

Test sponsor: Dell Inc.

Tested by: Dell Inc.

Test date: Oct-2017

Hardware Availability: Jul-2017

Software Availability: Apr-2017

Peak Optimization Flags (Continued)

C++ benchmarks:

```
471.omnetpp: -prof-gen(pass 1) -prof-use(pass 2) -xCORE-AVX512(pass 2)
             -par-num-threads=1(pass 1) -ipo(pass 2) -O3(pass 2)
             -no-prec-div(pass 2)
             -qopt-ra-region-strategy=block
             -qopt-mem-layout-trans=3 -Wl,-z,muldefs
             -L/shl0.2 -lsmartheap
```

473.astar: basepeak = yes

483.xalancbmk: basepeak = yes

Peak Other Flags

C benchmarks:

```
403.gcc: -Dalloca=_alloca
```

The flags files that were used to format this result can be browsed at

<http://www.spec.org/cpu2006/flags/Intel-ic17.0-official-linux64-revF.html>

<http://www.spec.org/cpu2006/flags/Dell-Platform-Flags-PowerEdge14G-revC.html>

You can also download the XML flags sources by saving the following links:

<http://www.spec.org/cpu2006/flags/Intel-ic17.0-official-linux64-revF.xml>

<http://www.spec.org/cpu2006/flags/Dell-Platform-Flags-PowerEdge14G-revC.xml>

SPEC and SPECint are registered trademarks of the Standard Performance Evaluation Corporation. All other brand and product names appearing in this result are trademarks or registered trademarks of their respective holders.

For questions about this result, please contact the tester.
For other inquiries, please contact webmaster@spec.org.

Tested with SPEC CPU2006 v1.2.

Report generated on Wed Nov 15 10:58:46 2017 by SPEC CPU2006 PS/PDF formatter v6932.

Originally published on 14 November 2017.