



SPEC[®] CINT2006 Result

Copyright 2006-2017 Standard Performance Evaluation Corporation

Dell Inc.

PowerEdge R940
(Intel Xeon Gold 6150, 2.70 GHz)

SPECint[®]_rate2006 = 3940

SPECint_rate_base2006 = 3750

CPU2006 license: 55

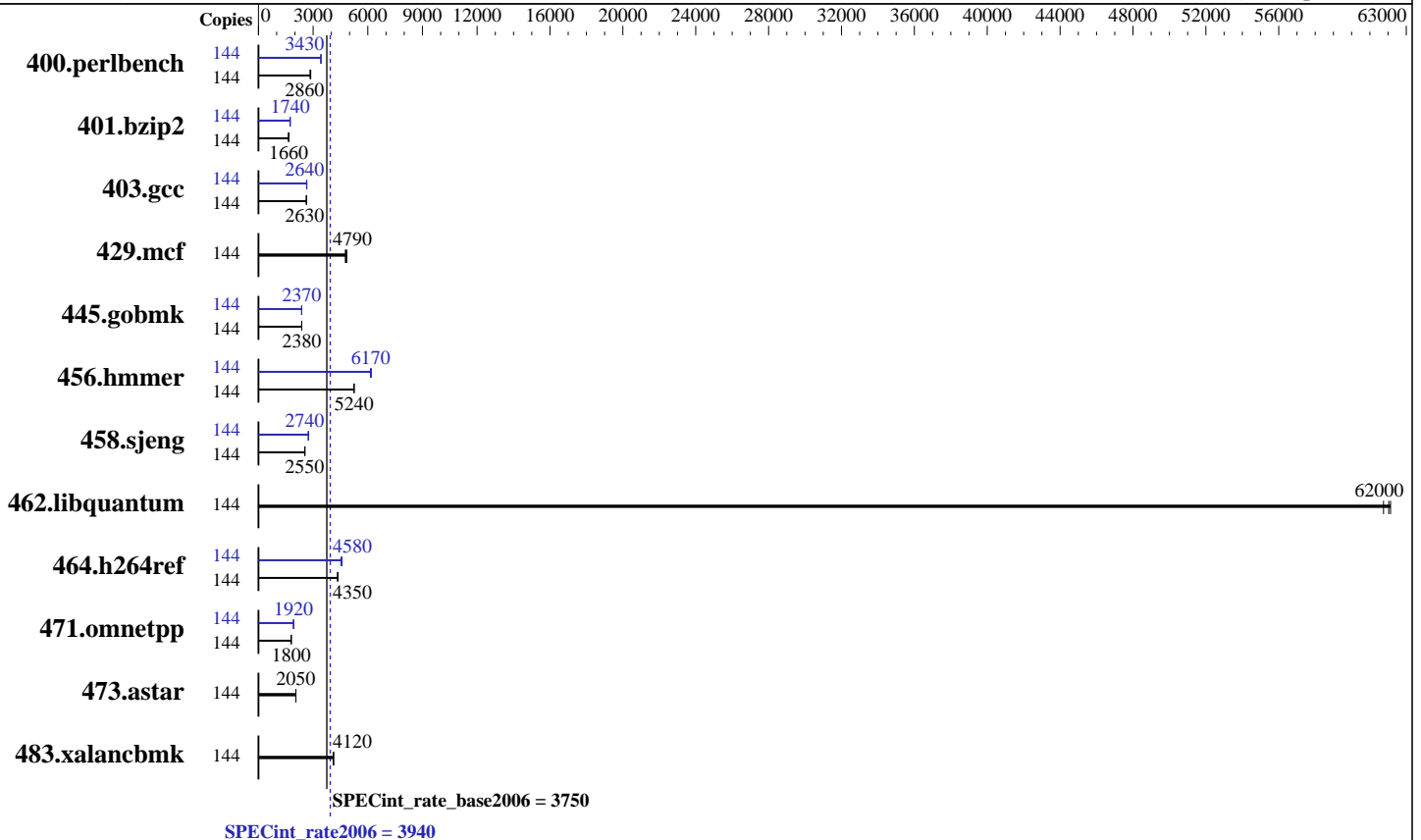
Test sponsor: Dell Inc.

Tested by: Dell Inc.

Test date: Oct-2017

Hardware Availability: Sep-2017

Software Availability: Apr-2017



Hardware

CPU Name: Intel Xeon Gold 6150
 CPU Characteristics: Intel Turbo Boost Technology up to 3.70 GHz
 CPU MHz: 2700
 FPU: Integrated
 CPU(s) enabled: 72 cores, 4 chips, 18 cores/chip, 2 threads/core
 CPU(s) orderable: 2,4 chip
 Primary Cache: 32 KB I + 32 KB D on chip per core
 Secondary Cache: 1 MB I+D on chip per core
 L3 Cache: 24.75 MB I+D on chip per chip
 Other Cache: None
 Memory: 768 GB (48 x 16 GB 2Rx8 PC4-2666V-R)
 Disk Subsystem: 1 x 900 GB 15K RPM SAS12
 Other Hardware: None

Software

Operating System: SUSE Linux Enterprise Server 12 (x86_64) SP2
 4.4.21-69-default
 Compiler: C/C++: Version 17.0.3.191 of Intel C/C++
 Compiler for Linux
 Auto Parallel: Yes
 File System: xfs
 System State: Run level 3 (multi-user)
 Base Pointers: 32-bit
 Peak Pointers: 32/64-bit
 Other Software: Microquill SmartHeap V10.2



SPEC CINT2006 Result

Copyright 2006-2017 Standard Performance Evaluation Corporation

Dell Inc.

PowerEdge R940
(Intel Xeon Gold 6150, 2.70 GHz)

SPECint_rate2006 = 3940

SPECint_rate_base2006 = 3750

CPU2006 license: 55
Test sponsor: Dell Inc.
Tested by: Dell Inc.

Test date: Oct-2017
Hardware Availability: Sep-2017
Software Availability: Apr-2017

Results Table

Benchmark	Base							Peak						
	Copies	Seconds	Ratio	Seconds	Ratio	Seconds	Ratio	Copies	Seconds	Ratio	Seconds	Ratio	Seconds	Ratio
400.perlbench	144	490	2870	497	2830	<u>491</u>	<u>2860</u>	144	411	3420	410	3430	<u>410</u>	<u>3430</u>
401.bzip2	144	841	1650	<u>839</u>	<u>1660</u>	838	1660	144	802	1730	<u>798</u>	<u>1740</u>	797	1740
403.gcc	144	441	2630	440	2640	<u>440</u>	<u>2630</u>	144	<u>438</u>	<u>2640</u>	436	2660	439	2640
429.mcf	144	<u>274</u>	<u>4790</u>	271	4850	275	4770	144	<u>274</u>	<u>4790</u>	271	4850	275	4770
445.gobmk	144	636	2370	<u>636</u>	<u>2380</u>	636	2380	144	<u>637</u>	<u>2370</u>	637	2370	637	2370
456.hammer	144	<u>256</u>	<u>5240</u>	256	5250	256	5240	144	<u>218</u>	<u>6170</u>	218	6150	217	6200
458.sjeng	144	685	2540	684	2550	<u>685</u>	<u>2550</u>	144	<u>636</u>	<u>2740</u>	637	2740	635	2740
462.libquantum	144	48.3	61800	48.0	62100	<u>48.1</u>	<u>62000</u>	144	48.3	61800	48.0	62100	<u>48.1</u>	<u>62000</u>
464.h264ref	144	731	4360	<u>732</u>	<u>4350</u>	734	4340	144	<u>696</u>	<u>4580</u>	695	4590	705	4520
471.omnetpp	144	501	1800	<u>501</u>	<u>1800</u>	501	1800	144	468	1920	<u>468</u>	<u>1920</u>	468	1920
473.astar	144	492	2050	492	2060	<u>492</u>	<u>2050</u>	144	492	2050	492	2060	<u>492</u>	<u>2050</u>
483.xalancbmk	144	<u>241</u>	<u>4120</u>	241	4130	242	4110	144	<u>241</u>	<u>4120</u>	241	4130	242	4110

Results appear in the order in which they were run. Bold underlined text indicates a median measurement.

Submit Notes

The numactl mechanism was used to bind copies to processors. The config file option 'submit' was used to generate numactl commands to bind each copy to a specific processor. For details, please see the config file.

Operating System Notes

Kernel boot parameter: nohz_full=1-143
Stack size set to unlimited using "ulimit -s unlimited"

Platform Notes

BIOS settings:
Logical Processor Enabled
Virtualization Technology Disabled
Sub NUMA Cluster Enabled
System Profile set to Custom
CPU Performance set to Maximum Performance
C1E Disabled
C States set to Autonomous
Uncore Frequency set to Dynamic
Memory Patrol Scrub Disabled
Energy Efficiency Policy set to Performance
CPU Interconnect Bus Link Power Management Disabled
PCI ASPM L1 Link Power Management Disabled
Sysinfo program /home/cpu2006/config/sysinfo.rev6993
Revision 6993 of 2015-11-06 (b5e8d4b4eb51ed28d7f98696cbe290c1)
running on linux-r3h9 Tue Oct 17 11:55:19 2017

Continued on next page



SPEC CINT2006 Result

Copyright 2006-2017 Standard Performance Evaluation Corporation

Dell Inc.

SPECint_rate2006 = 3940

PowerEdge R940
(Intel Xeon Gold 6150, 2.70 GHz)

SPECint_rate_base2006 = 3750

CPU2006 license: 55

Test date: Oct-2017

Test sponsor: Dell Inc.

Hardware Availability: Sep-2017

Tested by: Dell Inc.

Software Availability: Apr-2017

Platform Notes (Continued)

This section contains SUT (System Under Test) info as seen by some common utilities. To remove or add to this section, see: <http://www.spec.org/cpu2006/Docs/config.html#sysinfo>

```

From /proc/cpuinfo
model name : Intel(R) Xeon(R) Gold 6150 CPU @ 2.70GHz
 4 "physical id"s (chips)
144 "processors"
cores, siblings (Caution: counting these is hw and system dependent. The
following excerpts from /proc/cpuinfo might not be reliable. Use with
caution.)
cpu cores : 18
siblings : 36
physical 0: cores 0 1 2 3 4 8 9 10 11 16 17 18 19 20 24 25 26 27
physical 1: cores 0 1 2 3 4 8 9 10 11 16 17 18 19 20 24 25 26 27
physical 2: cores 0 1 2 3 4 8 9 10 11 16 17 18 19 20 24 25 26 27
physical 3: cores 0 1 2 3 4 8 9 10 11 16 17 18 19 20 24 25 26 27
cache size : 25344 KB

```

```

From /proc/meminfo
MemTotal:      791224272 kB
HugePages_Total:      0
Hugepagesize:    2048 kB

```

```

/usr/bin/lsb_release -d
SUSE Linux Enterprise Server 12 SP2

```

```

From /etc/*release* /etc/*version*
SuSE-release:
SUSE Linux Enterprise Server 12 (x86_64)
VERSION = 12
PATCHLEVEL = 2
# This file is deprecated and will be removed in a future service pack or
release.
# Please check /etc/os-release for details about this release.
os-release:
NAME="SLES"
VERSION="12-SP2"
VERSION_ID="12.2"
PRETTY_NAME="SUSE Linux Enterprise Server 12 SP2"
ID="sles"
ANSI_COLOR="0;32"
CPE_NAME="cpe:/o:suse:sles:12:sp2"

```

```

uname -a:
Linux linux-r3h9 4.4.21-69-default #1 SMP Tue Oct 25 10:58:20 UTC 2016
(9464f67) x86_64 x86_64 x86_64 GNU/Linux

```

run-level 3 Oct 17 11:55

SPEC is set to: /home/cpu2006

Continued on next page



SPEC CINT2006 Result

Copyright 2006-2017 Standard Performance Evaluation Corporation

Dell Inc.

PowerEdge R940
(Intel Xeon Gold 6150, 2.70 GHz)

SPECint_rate2006 = 3940

SPECint_rate_base2006 = 3750

CPU2006 license: 55
Test sponsor: Dell Inc.
Tested by: Dell Inc.

Test date: Oct-2017
Hardware Availability: Sep-2017
Software Availability: Apr-2017

Platform Notes (Continued)

Filesystem Type Size Used Avail Use% Mounted on
/dev/sda4 xfs 796G 17G 779G 3% /home
Additional information from dmidecode:

Warning: Use caution when you interpret this section. The 'dmidecode' program reads system data which is "intended to allow hardware to be accurately determined", but the intent may not be met, as there are frequent changes to hardware, firmware, and the "DMTF SMBIOS" standard.

BIOS Dell Inc. 1.1.7 08/10/2017

Memory:

13x 00AD00B300AD HMA82GR7AFR8N-VK 16 GB 2 rank 2666 MHz
35x 00CE063200CE M393A2K43BB1-CTD 16 GB 2 rank 2666 MHz

(End of data from sysinfo program)

General Notes

Environment variables set by runspec before the start of the run:

LD_LIBRARY_PATH = "/home/cpu2006/lib/ia32:/home/cpu2006/lib/intel64:/home/cpu2006/sh10.2"

Binaries compiled on a system with 1x Intel Core i7-4790 CPU + 32GB RAM memory using Redhat Enterprise Linux 7.2

Transparent Huge Pages enabled by default

Filesystem page cache cleared with:

shell invocation of 'sync; echo 3 > /proc/sys/vm/drop_caches' prior to run

runspec command invoked through numactl i.e.:

numactl --interleave=all runspec <etc>

Base Compiler Invocation

C benchmarks:

icc -m32 -L/opt/intel/compilers_and_libraries_2017/linux/lib/ia32

C++ benchmarks:

icpc -m32 -L/opt/intel/compilers_and_libraries_2017/linux/lib/ia32

Base Portability Flags

400.perlbench: -D_FILE_OFFSET_BITS=64 -DSPEC_CPU_LINUX_IA32

401.bzip2: -D_FILE_OFFSET_BITS=64

403.gcc: -D_FILE_OFFSET_BITS=64

429.mcf: -D_FILE_OFFSET_BITS=64

445.gobmk: -D_FILE_OFFSET_BITS=64

456.hmmer: -D_FILE_OFFSET_BITS=64

458.sjeng: -D_FILE_OFFSET_BITS=64

Continued on next page



SPEC CINT2006 Result

Copyright 2006-2017 Standard Performance Evaluation Corporation

Dell Inc.

PowerEdge R940
(Intel Xeon Gold 6150, 2.70 GHz)

SPECint_rate2006 = 3940

SPECint_rate_base2006 = 3750

CPU2006 license: 55
Test sponsor: Dell Inc.
Tested by: Dell Inc.

Test date: Oct-2017
Hardware Availability: Sep-2017
Software Availability: Apr-2017

Base Portability Flags (Continued)

462.libquantum: -D_FILE_OFFSET_BITS=64 -DSPEC_CPU_LINUX
464.h264ref: -D_FILE_OFFSET_BITS=64
471.omnetpp: -D_FILE_OFFSET_BITS=64
473.astar: -D_FILE_OFFSET_BITS=64
483.xalancbmk: -D_FILE_OFFSET_BITS=64 -DSPEC_CPU_LINUX

Base Optimization Flags

C benchmarks:
-xCORE-AVX512 -ipo -O3 -no-prec-div -qopt-prefetch
-qopt-mem-layout-trans=3

C++ benchmarks:
-xCORE-AVX512 -ipo -O3 -no-prec-div -qopt-prefetch
-qopt-mem-layout-trans=3 -Wl,-z,muldefs -L/sh10.2 -lsmartheap

Base Other Flags

C benchmarks:
403.gcc: -Dalloca=_alloca

Peak Compiler Invocation

C benchmarks (except as noted below):
icc -m32 -L/opt/intel/compilers_and_libraries_2017/linux/lib/ia32

400.perlbench: icc -m64
401.bzip2: icc -m64
456.hmmer: icc -m64
458.sjeng: icc -m64

C++ benchmarks:
icpc -m32 -L/opt/intel/compilers_and_libraries_2017/linux/lib/ia32

Peak Portability Flags

400.perlbench: -DSPEC_CPU_LP64 -DSPEC_CPU_LINUX_X64

Continued on next page



SPEC CINT2006 Result

Copyright 2006-2017 Standard Performance Evaluation Corporation

Dell Inc.

PowerEdge R940
(Intel Xeon Gold 6150, 2.70 GHz)

SPECint_rate2006 = 3940

SPECint_rate_base2006 = 3750

CPU2006 license: 55

Test sponsor: Dell Inc.

Tested by: Dell Inc.

Test date: Oct-2017

Hardware Availability: Sep-2017

Software Availability: Apr-2017

Peak Portability Flags (Continued)

401.bzip2: -DSPEC_CPU_LP64
 403.gcc: -D_FILE_OFFSET_BITS=64
 429.mcf: -D_FILE_OFFSET_BITS=64
 445.gobmk: -D_FILE_OFFSET_BITS=64
 456.hmmer: -DSPEC_CPU_LP64
 458.sjeng: -DSPEC_CPU_LP64
 462.libquantum: -D_FILE_OFFSET_BITS=64 -DSPEC_CPU_LINUX
 464.h264ref: -D_FILE_OFFSET_BITS=64
 471.omnetpp: -D_FILE_OFFSET_BITS=64
 473.astar: -D_FILE_OFFSET_BITS=64
 483.xalancbmk: -D_FILE_OFFSET_BITS=64 -DSPEC_CPU_LINUX

Peak Optimization Flags

C benchmarks:

400.perlbench: -prof-gen(pass 1) -prof-use(pass 2) -xCORE-AVX512(pass 2)
 -par-num-threads=1(pass 1) -ipo(pass 2) -O3(pass 2)
 -no-prec-div(pass 2) -auto-ilp32 -qopt-mem-layout-trans=3

401.bzip2: -prof-gen(pass 1) -prof-use(pass 2) -xCORE-AVX512(pass 2)
 -par-num-threads=1(pass 1) -ipo(pass 2) -O3(pass 2)
 -no-prec-div(pass 2) -qopt-prefetch -auto-ilp32
 -qopt-mem-layout-trans=3

403.gcc: -xCORE-AVX512 -ipo -O3 -no-prec-div
 -qopt-mem-layout-trans=3

429.mcf: basepeak = yes

445.gobmk: -prof-gen(pass 1) -prof-use(pass 2) -xCORE-AVX512(pass 2)
 -par-num-threads=1(pass 1) -ipo(pass 2) -O3(pass 2)
 -no-prec-div(pass 2) -qopt-mem-layout-trans=3

456.hmmer: -xCORE-AVX512 -ipo -O3 -no-prec-div -unroll2 -auto-ilp32
 -qopt-mem-layout-trans=3

458.sjeng: -prof-gen(pass 1) -prof-use(pass 2) -xCORE-AVX512(pass 2)
 -par-num-threads=1(pass 1) -ipo(pass 2) -O3(pass 2)
 -no-prec-div(pass 2) -unroll14 -auto-ilp32
 -qopt-mem-layout-trans=3

462.libquantum: basepeak = yes

464.h264ref: -prof-gen(pass 1) -prof-use(pass 2) -xCORE-AVX512(pass 2)
 -par-num-threads=1(pass 1) -ipo(pass 2) -O3(pass 2)
 -no-prec-div(pass 2) -unroll2 -qopt-mem-layout-trans=3

Continued on next page



SPEC CINT2006 Result

Copyright 2006-2017 Standard Performance Evaluation Corporation

Dell Inc.

PowerEdge R940
(Intel Xeon Gold 6150, 2.70 GHz)

SPECint_rate2006 = 3940

SPECint_rate_base2006 = 3750

CPU2006 license: 55
Test sponsor: Dell Inc.
Tested by: Dell Inc.

Test date: Oct-2017
Hardware Availability: Sep-2017
Software Availability: Apr-2017

Peak Optimization Flags (Continued)

C++ benchmarks:

```
471.omnetpp: -prof-gen(pass 1) -prof-use(pass 2) -xCORE-AVX512(pass 2)
             -par-num-threads=1(pass 1) -ipo(pass 2) -O3(pass 2)
             -no-prec-div(pass 2)
             -qopt-ra-region-strategy=block
             -qopt-mem-layout-trans=3 -Wl,-z,muldefs
             -L/shl0.2 -lsmartheap
```

473.astar: basepeak = yes

483.xalancbmk: basepeak = yes

Peak Other Flags

C benchmarks:

```
403.gcc: -Dalloca=_alloca
```

The flags files that were used to format this result can be browsed at

<http://www.spec.org/cpu2006/flags/Intel-ic17.0-official-linux64-revF.html>
<http://www.spec.org/cpu2006/flags/Dell-Platform-Flags-PowerEdge14G-revD.20171221.html>

You can also download the XML flags sources by saving the following links:

<http://www.spec.org/cpu2006/flags/Intel-ic17.0-official-linux64-revF.xml>
<http://www.spec.org/cpu2006/flags/Dell-Platform-Flags-PowerEdge14G-revD.20171221.xml>

SPEC and SPECint are registered trademarks of the Standard Performance Evaluation Corporation. All other brand and product names appearing in this result are trademarks or registered trademarks of their respective holders.

For questions about this result, please contact the tester.
For other inquiries, please contact webmaster@spec.org.

Tested with SPEC CPU2006 v1.2.
Report generated on Thu Dec 21 17:10:20 2017 by SPEC CPU2006 PS/PDF formatter v6932.
Originally published on 21 December 2017.