



SPEC CPU®2026 Floating Point Rate Result

Copyright 2026 Standard Performance Evaluation Corporation

Dell Inc.

SPECrate®2026_fp_base = 1010

PowerEdge M7725 (AMD EPYC 9965 192-Core Processor)

SPECrate®2026_fp_peak = 1010

CPU2026 License: 6573

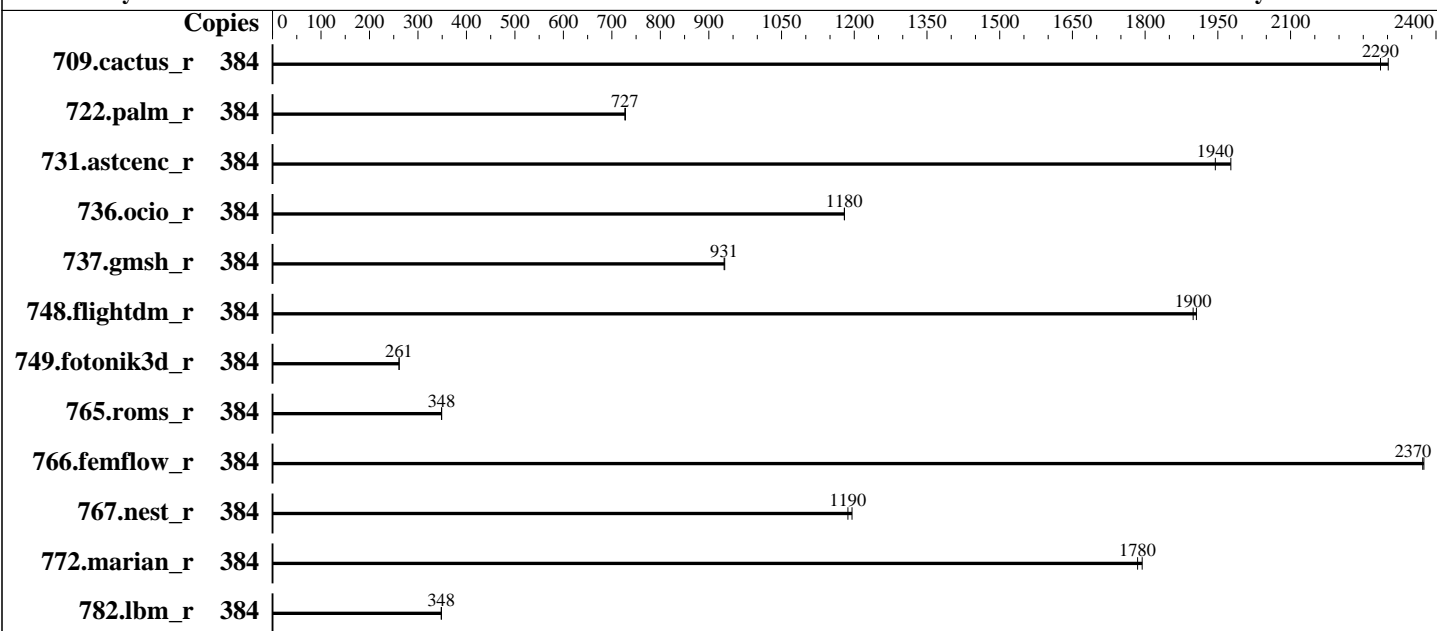
Test Date: Feb-2026

Test Sponsor: Dell Inc.

Hardware Availability: Jan-2025

Tested by: Dell Inc.

Software Availability: Jan-2026



Hardware

CPU Name: AMD EPYC 9965
 Max MHz: 3700
 Nominal: 2250
 Enabled: 384 cores, 2 chips
 Orderable: 1,2 chips
 Cache L1: 32 KB I + 48 KB D on chip per core
 L2: 1 MB I+D on chip per core
 L3: 384 MB I+D on chip per chip, 32 MB shared / 16 cores
 Other: None
 Memory: 1536 GB (24 x 64 GB 2Rx4 PC5-6400B-R)
 Storage: 200 GB on tmpfs
 Cooling: DLC
 Other: None

Software

OS: Ubuntu 24.04.1 LTS
 6.8.0-57-generic
 Compiler: C/C++/Fortran: Version 5.1.0 of AOCC
 Compiler Category: Vendor
 Firmware: Version 1.5.3 released Oct-2025
 File System: tmpfs
 System State: Run level 5 (graphical multi-user)
 Base Pointers: 64-bit
 Peak Pointers: 64-bit
 Other: None
 Power Management: BIOS and OS set to prefer performance at the cost of additional power usage.



SPEC CPU®2026 Floating Point Rate Result

Copyright 2026 Standard Performance Evaluation Corporation

Dell Inc.

SPECrate®2026_fp_base = 1010

PowerEdge M7725 (AMD EPYC 9965 192-Core Processor)

SPECrate®2026_fp_peak = 1010

CPU2026 License: 6573

Test Date: Feb-2026

Test Sponsor: Dell Inc.

Hardware Availability: Jan-2025

Tested by: Dell Inc.

Software Availability: Jan-2026

Results Table

Benchmark	Base							Peak						
	Copies	Seconds	Ratio	Seconds	Ratio	Seconds	Ratio	Copies	Seconds	Ratio	Seconds	Ratio	Seconds	Ratio
709.cactus_r	384	<u>144</u>	<u>2290</u>	143	2300			384	<u>144</u>	<u>2290</u>	143	2300		
722.palm_r	384	696	728	<u>697</u>	<u>727</u>			384	696	728	<u>697</u>	<u>727</u>		
731.ascenc_r	384	163	1980	<u>166</u>	<u>1940</u>			384	163	1980	<u>166</u>	<u>1940</u>		
736.ocio_r	384	285	1180	<u>285</u>	<u>1180</u>			384	285	1180	<u>285</u>	<u>1180</u>		
737.gmsh_r	384	189	933	<u>189</u>	<u>931</u>			384	189	933	<u>189</u>	<u>931</u>		
748.flightdm_r	384	<u>145</u>	<u>1900</u>	144	1910			384	<u>145</u>	<u>1900</u>	144	1910		
749.fotonik3d_r	384	1700	261	<u>1701</u>	<u>261</u>			384	1700	261	<u>1701</u>	<u>261</u>		
765.roms_r	384	1733	349	<u>1735</u>	<u>348</u>			384	1733	349	<u>1735</u>	<u>348</u>		
766.femflow_r	384	237	2380	<u>237</u>	<u>2370</u>			384	237	2380	<u>237</u>	<u>2370</u>		
767.nest_r	384	255	1200	<u>257</u>	<u>1190</u>			384	255	1200	<u>257</u>	<u>1190</u>		
772.marian_r	384	<u>340</u>	<u>1780</u>	338	1790			384	<u>340</u>	<u>1780</u>	338	1790		
782.lbm_r	384	<u>632</u>	<u>348</u>	631	348			384	<u>632</u>	<u>348</u>	631	348		

SPECrate®2026_fp_base = 1010

SPECrate®2026_fp_peak = 1010

Results appear in the order in which they were run. Bold underlined text indicates a median measurement.

Compiler Notes

The AMD64 AOCC Compiler Suite is available at <http://developer.amd.com/amd-aocc/>

Submit Notes

The config file option 'submit' was used.
'numactl' was used to bind copies to the cores.
See the configuration file for details.

Operating System Notes

'ulimit -s unlimited' was used to set environment stack size limit
'ulimit -l 2097152' was used to set environment locked pages in memory limit

runcpu command invoked through numactl i.e.:
numactl --interleave=all runcpu <etc>

To limit dirty cache to 8% of memory, 'sysctl -w vm.dirty_ratio=8' run as root.
To limit swap usage to minimum necessary, 'sysctl -w vm.swappiness=1' run as root.
To free node-local memory and avoid remote memory usage,
'sysctl -w vm.zone_reclaim_mode=1' run as root.
To clear filesystem caches, 'sync; sysctl -w vm.drop_caches=3' run as root.

(Continued on next page)



SPEC CPU®2026 Floating Point Rate Result

Copyright 2026 Standard Performance Evaluation Corporation

Dell Inc.

SPECrate®2026_fp_base = 1010

PowerEdge M7725 (AMD EPYC 9965 192-Core Processor)

SPECrate®2026_fp_peak = 1010

CPU2026 License: 6573

Test Date: Feb-2026

Test Sponsor: Dell Inc.

Hardware Availability: Jan-2025

Tested by: Dell Inc.

Software Availability: Jan-2026

Operating System Notes (Continued)

To disable address space layout randomization (ASLR) to reduce run-to-run variability, 'sysctl -w kernel.randomize_va_space=0' run as root.

To enable Transparent Hugepages (THP) for all allocations, 'echo always > /sys/kernel/mm/transparent_hugepage/enabled' and 'echo always > /sys/kernel/mm/transparent_hugepage/defrag' run as root.

Environment Variables Notes

Environment variables set by runcpu before the start of the run:

```
LD_LIBRARY_PATH =
    "/mnt/ramdisk/cpu2026rc2/amd_rate_aocc510_znver5_A_lib/lib:/mnt/ramdisk/
    cpu2026rc2/amd_rate_aocc510_znver5_A_lib/lib32:"
MALLOC_CONF = "retain:true"
```

General Notes

Binaries were compiled on a system with 2x AMD EPYC Venice256 CPU + 2TiB Memory using Ubuntu 24.04
Benchmark run from a 200 GB ramdisk created with the cmd: "mount -t tmpfs -o size=200G tmpfs /mnt/ramdisk"

Platform Notes

BIOS Settings:

```
Logical Processor : Disabled
Virtualization Technology : Disabled
NUMA Nodes Per Socket : 4

System Profile : Custom
CPU Power Management : Maximum Performance
C-States : Disabled
Memory Patrol Scrub : Disabled
PCI ASPM L1 Link Power Management : Disabled
Periodic Directory Rinse Tuning : Blended
Determinism Control : Manual
Determinism Slider : Power Determinism
Optimizer Mode : Enabled
Algorithm Performance Boost Disable : Enabled
ApbDis Fixed DF P-State : P0
Adaptive Allocation : Enabled
Dram Refresh Delay : Performance
```

Sysinfo program /mnt/ramdisk/cpu2026rc2/bin/sysinfo
Rev: 069f95da7e7f5d81b2ce48a82150e54f

(Continued on next page)



SPEC CPU®2026 Floating Point Rate Result

Copyright 2026 Standard Performance Evaluation Corporation

Dell Inc.

SPECrate®2026_fp_base = 1010

PowerEdge M7725 (AMD EPYC 9965 192-Core Processor)

SPECrate®2026_fp_peak = 1010

CPU2026 License: 6573

Test Date: Feb-2026

Test Sponsor: Dell Inc.

Hardware Availability: Jan-2025

Tested by: Dell Inc.

Software Availability: Jan-2026

Platform Notes (Continued)

running on M772501-M7725 Fri Feb 6 09:17:56 2026

SUT (System Under Test) info as seen by some common utilities.

Table of contents

- 1. uname -srvm
- 2. w
- 3. Username
- 4. ulimit -a
- 5. sysinfo process ancestry
- 6. /proc/cpuinfo
- 7. lscpu
- 8. numactl --hardware
- 9. /proc/meminfo
- 10. who -r
- 11. Systemd service manager version: systemd 255 (255.4-lubuntu8.4)
- 12. Failed units, from systemctl list-units --state=failed
- 13. Services, from systemctl list-unit-files
- 14. Linux kernel boot-time arguments, from /proc/cmdline
- 15. cpupower frequency-info
- 16. tuned-adm active
- 17. sysctl
- 18. /sys/kernel/mm/transparent_hugepage
- 19. /sys/kernel/mm/transparent_hugepage/khugepaged
- 20. OS release
- 21. Disk information
- 22. /sys/devices/virtual/dmi/id
- 23. dmidecode
- 24. BIOS

```
1. uname -srvm
Linux 6.8.0-57-generic #59-Ubuntu SMP PREEMPT_DYNAMIC Sat Mar 15 17:40:59 UTC 2025 x86_64
```

```
2. w
09:17:56 up 20 min, 1 user, load average: 0.25, 0.07, 0.02
USER      TTY      FROM          LOGIN@      IDLE        JCPU      PCPU      WHAT
root                100.71.148.183 08:58      20:30      0.00s      0.03s    sshd: root@pts/0
```

```
3. Username
From environment variable $USER: root
```

(Continued on next page)



SPEC CPU®2026 Floating Point Rate Result

Copyright 2026 Standard Performance Evaluation Corporation

Dell Inc.

SPECrate®2026_fp_base = 1010

PowerEdge M7725 (AMD EPYC 9965 192-Core Processor)

SPECrate®2026_fp_peak = 1010

CPU2026 License: 6573

Test Sponsor: Dell Inc.

Tested by: Dell Inc.

Test Date: Feb-2026

Hardware Availability: Jan-2025

Software Availability: Jan-2026

Platform Notes (Continued)

```

4. ulimit -a
time(seconds)          unlimited
file(blocks)           unlimited
data(kbytes)           unlimited
stack(kbytes)          unlimited
coredump(blocks)      0
memory(kbytes)         unlimited
locked memory(kbytes) 2097152
process                6188632
nofiles                1024
vmemory(kbytes)        unlimited
locks                  unlimited
rtprio                 0

-----

5. sysinfo process ancestry
/sbin/init
tmux new -s 2026ratefp
-bash
/bin/bash /home/DellFiles/bin/DELL_rate.sh
/bin/bash /home/DellFiles/bin/dell-run-main.sh rate
/bin/bash /home/DellFiles/bin/dell-run-main.sh rate
/bin/bash /home/DellFiles/bin/AMD/dell-run-speccpu.sh rate --define DL-VERS=7.0_T01 --output_format
html,pdf,txt
python3 ./run_amd_rate_aocc510_znver5_A1.py
/bin/bash ./amd_rate_aocc510_znver5_A1.sh
runcpu --config amd_rate_aocc510_znver5_A1.cfg --tune base --reportable --iterations 2 --define
DL-VERS=7.0_T01 --output_format html,pdf,txt fprate
runcpu --configfile amd_rate_aocc510_znver5_A1.cfg --tune base --reportable --iterations 2 --define
DL-VERS=7.0_T01 --output_format html,pdf,txt --nopower --runmode rate --tune base --size
test:train:refrate fprate --nopreenv --note-preenv --logfile
$SPEC/tmp/CPU2026.001/temlogs/preenv.fprate.001.0.log --lognum 001.0 --from_runcpu 2
specperl $SPEC/bin/sysinfo
$SPEC = /mnt/ramdisk/cpu2026rc2

-----

6. /proc/cpuinfo
model name      : AMD EPYC 9965 192-Core Processor
vendor_id      : AuthenticAMD
cpu family     : 26
model          : 17
stepping       : 0
microcode      : 0xb101054
bugs           : sysret_ss_attrs spectre_v1 spectre_v2 spec_store_bypass
TLB size      : 192 4K pages
cpu cores      : 192

```

(Continued on next page)



SPEC CPU®2026 Floating Point Rate Result

Copyright 2026 Standard Performance Evaluation Corporation

Dell Inc.

SPECrate®2026_fp_base = 1010

PowerEdge M7725 (AMD EPYC 9965 192-Core Processor)

SPECrate®2026_fp_peak = 1010

CPU2026 License: 6573
Test Sponsor: Dell Inc.
Tested by: Dell Inc.

Test Date: Feb-2026
Hardware Availability: Jan-2025
Software Availability: Jan-2026

Platform Notes (Continued)

```
siblings          : 192
2 physical ids (chips)
384 processors (hardware threads)
physical id 0: core ids 0-191
physical id 1: core ids 0-191
physical id 0: apicids 0-191
physical id 1: apicids 256-447
```

Caution: /proc/cpuinfo data regarding chips, cores, and threads is not necessarily reliable, especially for virtualized systems. Use the above data carefully.

7. lscpu

From lscpu from util-linux 2.39.3:

```
Architecture:          x86_64
CPU op-mode(s):        32-bit, 64-bit
Address sizes:         52 bits physical, 57 bits virtual
Byte Order:            Little Endian
CPU(s):                384
On-line CPU(s) list:   0-383
Vendor ID:             AuthenticAMD
BIOS Vendor ID:        AMD
Model name:            AMD EPYC 9965 192-Core Processor
BIOS Model name:       AMD EPYC 9965 192-Core Processor          CPU @ 2.2GHz
BIOS CPU family:       107
CPU family:            26
Model:                 17
Thread(s) per core:    1
Core(s) per socket:    192
Socket(s):              2
Stepping:              0
BogoMIPS:              4493.45
```

```
Flags:                  fpu vme de pse tsc msr pae mce cx8 apic sep mtrr pge mca cmov pat
pse36 clflush mmx fxsr sse sse2 ht syscall nx mmxext fxsr_opt pdpe1gb
rdtsmp lm constant_tsc rep_good amd_lbr_v2 nopl nonstop_tsc cpuid
extd_apicid aperfmpperf rapl pni pclmulqdq monitor ssse3 fma cx16 pcid
sse4_1 sse4_2 x2apic movbe popcnt aes xsave avx f16c rdrand lahf_lm
cmp_legacy extapic cr8_legacy abm sse4a misalignsse 3dnowprefetch
osvw ibs skinit wdt tce topoext perfctr_core perfctr_nb bpext
perfctr_llc mwaitx cpb cat_l3 cdp_l3 hw_pstate ssbd mba perfmon_v2
ibrs ibpb stibp ibrs_enhanced vmmcall fsgsbase tsc_adjust bmi1 avx2
smep bmi2 invpcid cqm rdt_a avx512f avx512dq rdseed adx smap
avx512ifma clflushopt clwb avx512cd sha_ni avx512bw avx512vl xsaveopt
xsavec xgetbv1 xsaves cqm_llc cqm_occup_llc cqm_mbm_total
cqm_mbm_local user_shstk avx_vnni avx512_bf16 clzero irperf
xsaveerptr rdpru wbnoinvd amd_ppin cppc amd_ibpb_ret arat npt lbrv
svm_lock nrip_save tsc_scale vmcb_clean flushbyasid decodeassists
```

(Continued on next page)



SPEC CPU®2026 Floating Point Rate Result

Copyright 2026 Standard Performance Evaluation Corporation

Dell Inc.

SPECrate®2026_fp_base = 1010

PowerEdge M7725 (AMD EPYC 9965 192-Core Processor)

SPECrate®2026_fp_peak = 1010

CPU2026 License: 6573

Test Date: Feb-2026

Test Sponsor: Dell Inc.

Hardware Availability: Jan-2025

Tested by: Dell Inc.

Software Availability: Jan-2026

Platform Notes (Continued)

```

pausefilter pfthreshold avic v_vmsave_vmload vgif x2avic v_spec_ctrl
vnmi avx512vbmi umip pku ospke avx512_vbmi2 gfni vaes vpclmulqdq
avx512_vnni avx512_bitalg avx512_vpopcntdq la57 rdpid bus_lock_detect
movdiri movdir64b overflow_recov succor smca avx512_vp2intersect
flush_llid debug_swap

```

```

L1d cache: 18 MiB (384 instances)
L1i cache: 12 MiB (384 instances)
L2 cache: 384 MiB (384 instances)
L3 cache: 768 MiB (24 instances)
NUMA node(s): 8
NUMA node0 CPU(s): 0-47
NUMA node1 CPU(s): 48-95
NUMA node2 CPU(s): 96-143
NUMA node3 CPU(s): 144-191
NUMA node4 CPU(s): 192-239
NUMA node5 CPU(s): 240-287
NUMA node6 CPU(s): 288-335
NUMA node7 CPU(s): 336-383
Vulnerability Gather data sampling: Not affected
Vulnerability Itlb multihit: Not affected
Vulnerability L1tf: Not affected
Vulnerability Mds: Not affected
Vulnerability Meltdown: Not affected
Vulnerability Mmio stale data: Not affected
Vulnerability Reg file data sampling: Not affected
Vulnerability Retbleed: Not affected
Vulnerability Spec rstack overflow: Not affected
Vulnerability Spec store bypass: Mitigation; Speculative Store Bypass disabled via prctl
Vulnerability Spectre v1: Mitigation; usercopy/swapgs barriers and __user pointer sanitization
Vulnerability Spectre v2: Mitigation; Enhanced / Automatic IBRS; IBPB conditional; STIBP
disabled; RSB filling; PBRSE-eIBRS Not affected; BHI Not affected
Vulnerability Srbds: Not affected
Vulnerability Tsx async abort: Not affected

```

From lscpu --cache:

NAME	ONE-SIZE	ALL-SIZE	WAYS	TYPE	LEVEL	SETS	PHY-LINE	COHERENCY-SIZE
L1d	48K	18M	12	Data	1	64	1	64
L1i	32K	12M	8	Instruction	1	64	1	64
L2	1M	384M	16	Unified	2	1024	1	64
L3	32M	768M	16	Unified	3	32768	1	64

8. numactl --hardware

NOTE: a numactl 'node' might or might not correspond to a physical chip.

```

available: 8 nodes (0-7)
node 0 cpus: 0-47
node 0 size: 192740 MB

```

(Continued on next page)



SPEC CPU®2026 Floating Point Rate Result

Copyright 2026 Standard Performance Evaluation Corporation

Dell Inc.

SPECrate®2026_fp_base = 1010

PowerEdge M7725 (AMD EPYC 9965 192-Core Processor)

SPECrate®2026_fp_peak = 1010

CPU2026 License: 6573

Test Sponsor: Dell Inc.

Tested by: Dell Inc.

Test Date: Feb-2026

Hardware Availability: Jan-2025

Software Availability: Jan-2026

Platform Notes (Continued)

```

node 0 free: 179700 MB
node 1 cpus: 48-95
node 1 size: 193513 MB
node 1 free: 193037 MB
node 2 cpus: 96-143
node 2 size: 193470 MB
node 2 free: 193042 MB
node 3 cpus: 144-191
node 3 size: 193497 MB
node 3 free: 192991 MB
node 4 cpus: 192-239
node 4 size: 193513 MB
node 4 free: 193025 MB
node 5 cpus: 240-287
node 5 size: 193513 MB
node 5 free: 192976 MB
node 6 cpus: 288-335
node 6 size: 193513 MB
node 6 free: 192978 MB
node 7 cpus: 336-383
node 7 size: 193470 MB
node 7 free: 192966 MB
node distances:
node  0  1  2  3  4  5  6  7
  0:  10 12 12 12 32 32 32 32
  1:  12 10 12 12 32 32 32 32
  2:  12 12 10 12 32 32 32 32
  3:  12 12 12 10 32 32 32 32
  4:  32 32 32 32 10 12 12 12
  5:  32 32 32 32 12 10 12 12
  6:  32 32 32 32 12 12 10 12
  7:  32 32 32 32 12 12 12 10

```

```

-----
9. /proc/meminfo
   MemTotal:      1584366172 kB

```

```

-----
10. who -r
    run-level 5 Feb 6 08:57

```

```

-----
11. Systemd service manager version: systemd 255 (255.4-1ubuntu8.4)
    Default Target Status
    graphical      degraded

```

(Continued on next page)



SPEC CPU®2026 Floating Point Rate Result

Copyright 2026 Standard Performance Evaluation Corporation

Dell Inc.

SPECrate®2026_fp_base = 1010

PowerEdge M7725 (AMD EPYC 9965 192-Core Processor)

SPECrate®2026_fp_peak = 1010

CPU2026 License: 6573

Test Sponsor: Dell Inc.

Tested by: Dell Inc.

Test Date: Feb-2026

Hardware Availability: Jan-2025

Software Availability: Jan-2026

Platform Notes (Continued)

12. Failed units, from `systemctl list-units --state=failed`

UNIT	LOAD	ACTIVE	SUB	DESCRIPTION
* cxl-monitor.service	loaded	failed	failed	CXL Monitor Daemon

Legend: LOAD -> Reflects whether the unit definition was properly loaded.

ACTIVE -> The high-level unit activation state, i.e. generalization of SUB.

SUB -> The low-level unit activation state, values depend on unit type.

1 loaded units listed.

13. Services, from `systemctl list-unit-files`

STATE	UNIT FILES
enabled	ModemManager apparmor appport blk-availability cloud-config cloud-final cloud-init cloud-init-local console-setup cron cxl-monitor dmesg e2scrub_reap finalrd getty@ gpu-manager grub-common grub-initrd-fallback keyboard-setup lm-sensors lvm2-monitor multipathd networkd-dispatcher open-iscsi open-vm-tools pollinate rsyslog secureboot-db setvtrgb sysstat systemd-networkd systemd-networkd-wait-online systemd-pstore systemd-resolved systemd-timesyncd thermald tuned ua-reboot-cmds ubuntu-advantage udisks2 ufw vgauth
enabled-runtime	netplan-ovs-cleanup systemd-fsck-root systemd-remount-fs
disabled	console-getty debug-shell iscsid nftables rsync serial-getty@ ssh systemd-boot-check-no-failures systemd-confext systemd-network-generator systemd-networkd-wait-online@ systemd-pcrlock-file-system systemd-pcrlock-firmware-code systemd-pcrlock-firmware-config systemd-pcrlock-machine-id systemd-pcrlock-make-policy systemd-pcrlock-secureboot-authority systemd-pcrlock-secureboot-policy systemd-sysextr systemd-time-wait-sync upower
indirect	systemd-sysupdate systemd-sysupdate-reboot uidd
masked	cryptdisks cryptdisks-early hwclock multipath-tools-boot screen-cleanup sudo x11-common

14. Linux kernel boot-time arguments, from `/proc/cmdline`

```
BOOT_IMAGE=/vmlinuz-6.8.0-57-generic
root=/dev/mapper/ubuntu--vg-ubuntu--lv
ro
```

15. `cpupower frequency-info`

```
analyzing CPU 294:
Unable to determine current policy
boost state support:
Supported: yes
Active: yes
Boost States: 0
Total States: 3
Pstate-P0: 2250MHz
```

16. `tuned-adm active`

(Continued on next page)



SPEC CPU®2026 Floating Point Rate Result

Copyright 2026 Standard Performance Evaluation Corporation

Dell Inc.

SPECrate®2026_fp_base = 1010

PowerEdge M7725 (AMD EPYC 9965 192-Core Processor)

SPECrate®2026_fp_peak = 1010

CPU2026 License: 6573

Test Sponsor: Dell Inc.

Tested by: Dell Inc.

Test Date: Feb-2026

Hardware Availability: Jan-2025

Software Availability: Jan-2026

Platform Notes (Continued)

Current active profile: throughput-performance

17. sysctl

```

kernel.numa_balancing          1
kernel.randomize_va_space      0
vm.compaction_proactiveness    20
vm.dirty_background_bytes      0
vm.dirty_background_ratio      10
vm.dirty_bytes                  0
vm.dirty_expire_centisecs      3000
vm.dirty_ratio                  8
vm.dirty_writeback_centisecs   500
vm.dirtytime_expire_seconds    43200
vm.extfrag_threshold           500
vm.min_unmapped_ratio          1
vm.nr_hugepages                 0
vm.nr_hugepages_mempolicy      0
vm.nr_overcommit_hugepages     0
vm.swappiness                   1
vm.watermark_boost_factor      15000
vm.watermark_scale_factor      10
vm.zone_reclaim_mode           1

```

18. /sys/kernel/mm/transparent_hugepage

```

defrag          [always] defer defer+madvise madvise never
enabled        [always] madvise never
hpage_pmd_size 2097152
shmem_enabled  always within_size advise [never] deny force

```

19. /sys/kernel/mm/transparent_hugepage/khugepaged

```

alloc_sleep_millisecs  60000
defrag                  1
max_ptes_none           511
max_ptes_shared         256
max_ptes_swap           64
pages_to_scan           4096
scan_sleep_millisecs   10000

```

20. OS release

```

From /etc/*-release /etc/*-version
os-release Ubuntu 24.04.1 LTS

```

(Continued on next page)



SPEC CPU®2026 Floating Point Rate Result

Copyright 2026 Standard Performance Evaluation Corporation

Dell Inc.

SPECrate®2026_fp_base = 1010

PowerEdge M7725 (AMD EPYC 9965 192-Core Processor)

SPECrate®2026_fp_peak = 1010

CPU2026 License: 6573

Test Date: Feb-2026

Test Sponsor: Dell Inc.

Hardware Availability: Jan-2025

Tested by: Dell Inc.

Software Availability: Jan-2026

Platform Notes (Continued)

21. Disk information

SPEC is set to: /mnt/ramdisk/cpu2026rc2

Filesystem	Type	Size	Used	Avail	Use%	Mounted on
tmpfs	tmpfs	200G	11G	190G	6%	/mnt/ramdisk

22. /sys/devices/virtual/dmi/id

```
Vendor:      Dell Inc.
Product:    PowerEdge M7725
Product Family: PowerEdge
Serial:     M772501
```

23. dmidecode

Additional information from dmidecode 3.5 follows. WARNING: Use caution when you interpret this section. The 'dmidecode' program reads system data which is "intended to allow hardware to be accurately determined", but the intent may not be met, as there are frequent changes to hardware, firmware, and the "DMTF SMBIOS" standard.

Memory:

```
1x 80CE000080CE M321R8GA0PB1-CCPQC 64 GB 2 rank 6400
23x 80CE000080CE M321R8GA0PB2-CCPKC 64 GB 2 rank 6400
```

24. BIOS

(This section combines info from /sys/devices and dmidecode.)

```
BIOS Vendor:    Dell Inc.
BIOS Version:   1.5.3
BIOS Date:     10/29/2025
BIOS Revision: 1.5
```

Compiler Version Notes

```
=====  
C      | 782.lbm_r(base)  
=====
```

```
AMD clang version 17.0.6 (CLANG: AOCC_5.1.0-Build#1994 2025_12_23)
Target: x86_64-unknown-linux-gnu
Thread model: posix
InstalledDir: /opt/AMD/aocc/aocc-compiler-5.1.0/bin  
=====
```

```
=====  
C++    | 731.astcenc_r(base) 736.ocio_r(base) 748.flightdm_r(base)  
      | 766.femflow_r(base) 767.nest_r(base) 772.marian_r(base)  
=====
```

(Continued on next page)



SPEC CPU®2026 Floating Point Rate Result

Copyright 2026 Standard Performance Evaluation Corporation

Dell Inc.

SPECrate®2026_fp_base = 1010

PowerEdge M7725 (AMD EPYC 9965 192-Core Processor)

SPECrate®2026_fp_peak = 1010

CPU2026 License: 6573

Test Sponsor: Dell Inc.

Tested by: Dell Inc.

Test Date: Feb-2026

Hardware Availability: Jan-2025

Software Availability: Jan-2026

Compiler Version Notes (Continued)

```
AMD clang version 17.0.6 (CLANG: AOCC_5.1.0-Build#1994 2025_12_23)
Target: x86_64-unknown-linux-gnu
Thread model: posix
InstalledDir: /opt/AMD/aocc/aocc-compiler-5.1.0/bin
```

```
=====  
C++, C | 709.cactus_r(base) 737.gmsh_r(base)  
=====
```

```
AMD clang version 17.0.6 (CLANG: AOCC_5.1.0-Build#1994 2025_12_23)
Target: x86_64-unknown-linux-gnu
Thread model: posix
InstalledDir: /opt/AMD/aocc/aocc-compiler-5.1.0/bin
```

```
=====  
Fortran | 722.palm_r(base) 749.fotonik3d_r(base) 765.roms_r(base)  
=====
```

```
AMD clang version 17.0.6 (CLANG: AOCC_5.1.0-Build#1994 2025_12_23)
Target: x86_64-unknown-linux-gnu
Thread model: posix
InstalledDir: /opt/AMD/aocc/aocc-compiler-5.1.0/bin
```

Base Compiler Invocation

C benchmarks:

clang

C++ benchmarks:

clang++

Fortran benchmarks:

flang

Benchmarks using both C and C++:

clang++ clang

Base Portability Flags

```
709.cactus_r: -DSPEC_LP64
722.palm_r: -DSPEC_LP64
731.astcenc_r: -DSPEC_LP64
```

(Continued on next page)



SPEC CPU®2026 Floating Point Rate Result

Copyright 2026 Standard Performance Evaluation Corporation

Dell Inc.

SPECrate®2026_fp_base = 1010

PowerEdge M7725 (AMD EPYC 9965 192-Core Processor)

SPECrate®2026_fp_peak = 1010

CPU2026 License: 6573

Test Sponsor: Dell Inc.

Tested by: Dell Inc.

Test Date: Feb-2026

Hardware Availability: Jan-2025

Software Availability: Jan-2026

Base Portability Flags (Continued)

```

736.ocio_r: -fno-finite-math-only -DSPEC_LP64
737.gmsh_r: -fno-fast-math -DSPEC_LP64
748.flightdm_r: -fno-reciprocal-math -DSPEC_LP64
749.fotonik3d_r: -DSPEC_LP64
765.roms_r: -DSPEC_LP64
766.femflow_r: -DSPEC_LP64
767.nest_r: -fno-finite-math-only -DSPEC_LP64
772.marian_r: -DSPEC_LP64
782.lbm_r: -DSPEC_LP64

```

Base Optimization Flags

C benchmarks:

```

-m64 -std=c18 -Wl,-mllvm -Wl,-align-all-nofallthru-blocks=6
-Wl,-mllvm -Wl,-reduce-array-computations=3
-Wl,-mllvm -Wl,-ldist-scalar-expand -fenable-aggressive-gather
-ffast-math -O3 -march=znver5 -fveclib=AMDLIBM -fno-PIE -no-pie
-flto -fstruct-layout=7 -mllvm -unroll-threshold=50
-mllvm -inline-threshold=1000 -fremap-arrays -fstrip-mining
-mllvm -reduce-array-computations=3 -zopt -lamdlibm -lamdalloc
-lflang

```

C++ benchmarks:

```

-m64 -std=c++17 -Wl,-mllvm -Wl,-align-all-nofallthru-blocks=6
-Wl,-mllvm -Wl,-reduce-array-computations=3
-Wl,-mllvm -Wl,-x86-use-vzeroupper=false -Wl,-mllvm -Wl,-extra-inliner
-ffast-math -O3 -march=znver5 -fveclib=AMDLIBM -flto
-mllvm -unroll-threshold=100 -mllvm -loop-unswitch-threshold=200000
-mllvm -reduce-array-computations=3 -zopt -lamdlibm -lamdalloc
-lflang

```

Fortran benchmarks:

```

-m64 -Mstandard -Wl,-mllvm -Wl,-align-all-nofallthru-blocks=6
-Wl,-mllvm -Wl,-reduce-array-computations=3
-Wl,-mllvm -Wl,-enable-X86-prefetching
-Wl,-mllvm -Wl,-enable-aggressive-gather=true
-Wl,-mllvm -Wl,-enable-masked-gather-sequence=false -ffast-math -O3
-march=znver5 -fveclib=AMDLIBM -flto -Mrecursive -funroll-loops
-mllvm -lsr-in-nested-loop -mllvm -reduce-array-computations=3
-fepilog-vectorization-of-inductions -zopt -lamdlibm -lamdalloc
-lflang

```

Benchmarks using both C and C++:

```

-m64 -std=c++17 -std=c18 -Wl,-mllvm -Wl,-align-all-nofallthru-blocks=6

```

(Continued on next page)



SPEC CPU®2026 Floating Point Rate Result

Copyright 2026 Standard Performance Evaluation Corporation

Dell Inc.

SPECrate®2026_fp_base = 1010

PowerEdge M7725 (AMD EPYC 9965 192-Core Processor)

SPECrate®2026_fp_peak = 1010

CPU2026 License: 6573

Test Date: Feb-2026

Test Sponsor: Dell Inc.

Hardware Availability: Jan-2025

Tested by: Dell Inc.

Software Availability: Jan-2026

Base Optimization Flags (Continued)

Benchmarks using both C and C++ (continued):

```

-Wl,-mllvm -Wl,-reduce-array-computations=3
-Wl,-mllvm -Wl,-x86-use-vzeroupper=false -Wl,-mllvm -Wl,-extra-inliner
-ffast-math -O3 -march=znver5 -fveclib=AMDLIBM -fno-PIE -no-pie
-flto -fstruct-layout=7 -mllvm -unroll-threshold=50
-mllvm -inline-threshold=1000 -fremap-arrays -fstrip-mining
-mllvm -reduce-array-computations=3 -zopt -mllvm -unroll-threshold=100
-mllvm -loop-unswitch-threshold=200000 -lamdlibm -lamdalloc -lflang

```

Peak Optimization Flags

C benchmarks:

782.lbm_r: basepeak = yes

C++ benchmarks:

731.astcenc_r: basepeak = yes

736.ocio_r: basepeak = yes

748.flightdm_r: basepeak = yes

766.femflow_r: basepeak = yes

767.nest_r: basepeak = yes

772.marian_r: basepeak = yes

Fortran benchmarks:

722.palm_r: basepeak = yes

749.fotonik3d_r: basepeak = yes

765.roms_r: basepeak = yes

Benchmarks using both C and C++:

709.cactus_r: basepeak = yes

737.gmsh_r: basepeak = yes



SPEC CPU®2026 Floating Point Rate Result

Copyright 2026 Standard Performance Evaluation Corporation

Dell Inc.

SPECrate®2026_fp_base = 1010

PowerEdge M7725 (AMD EPYC 9965 192-Core Processor)

SPECrate®2026_fp_peak = 1010

CPU2026 License: 6573

Test Date: Feb-2026

Test Sponsor: Dell Inc.

Hardware Availability: Jan-2025

Tested by: Dell Inc.

Software Availability: Jan-2026

The flags files that were used to format this result can be browsed at

<http://www.spec.org/cpu2026/results/flags/aocc-flags.2026-05-04.html>

<http://www.spec.org/cpu2026/results/flags/Dell-Platform-Flags-PowerEdge-AMD-EPYC-v1.8.html>

You can also download the XML flags sources by saving the following links:

<http://www.spec.org/cpu2026/results/flags/aocc-flags.2026-05-04.xml>

<http://www.spec.org/cpu2026/results/flags/Dell-Platform-Flags-PowerEdge-AMD-EPYC-v1.8.xml>

SPEC CPU and SPECrate are registered trademarks of the Standard Performance Evaluation Corporation. All other brand and product names appearing in this result are trademarks or registered trademarks of their respective holders.

For questions about this result, please contact the tester. For other inquiries, please contact info@spec.org.

Tested with SPEC CPU®2026 v0.902.0 on 2026-02-06 10:17:56-0500.

Report generated on 2026-05-11 16:38:29 by CPU2026 PDF formatter (unknown).

Originally published on 2026-05-05.