



SPEC CPU®2026 Floating Point Rate Result

Copyright 2026 Standard Performance Evaluation Corporation

Dell Inc.

SPECrate®2026_fp_base = 811

PowerEdge R770AP (Intel Xeon 6952P)

SPECrate®2026_fp_peak = 834

CPU2026 License: 6573

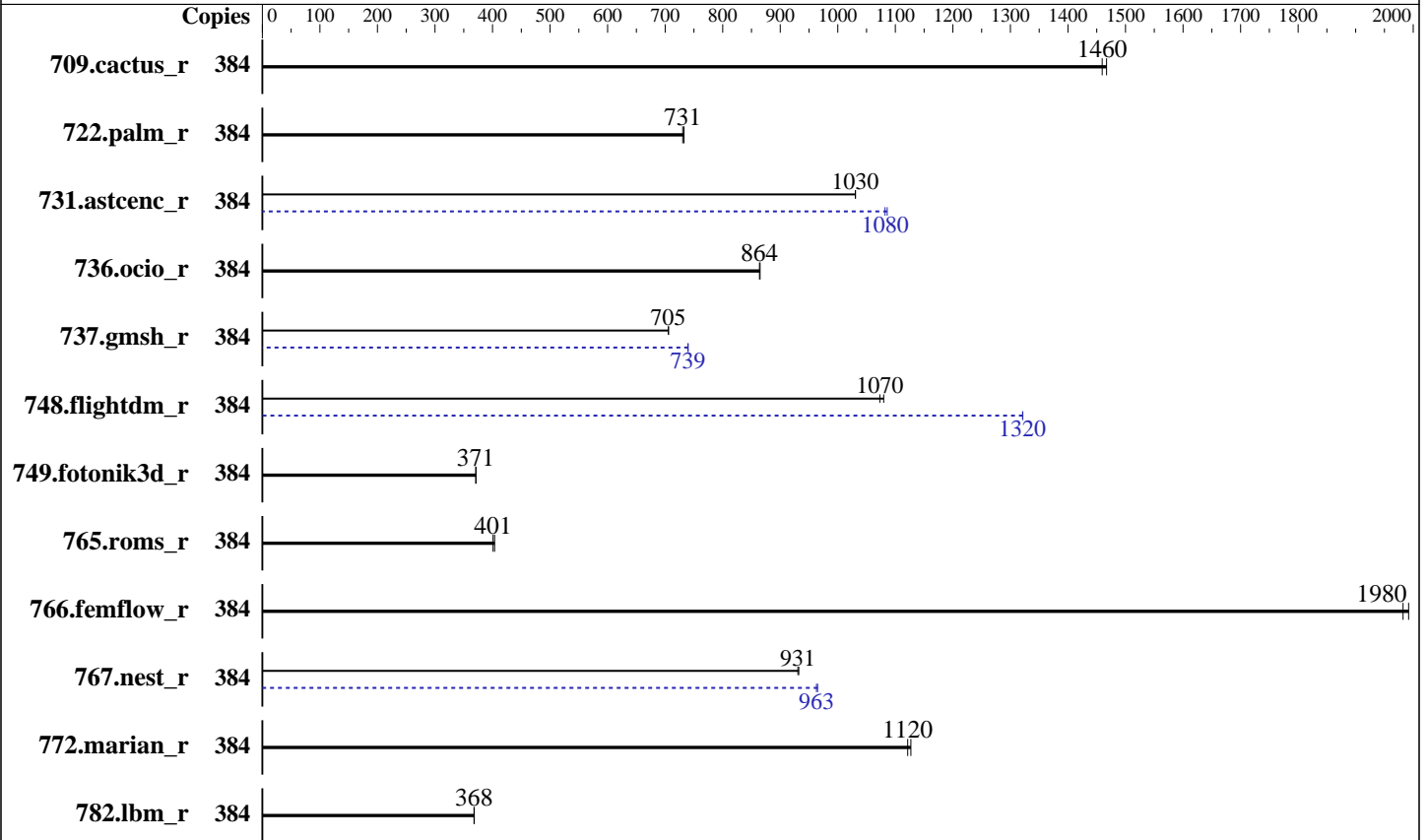
Test Date: Feb-2026

Test Sponsor: Dell Inc.

Hardware Availability: Dec-2025

Tested by: Dell Inc.

Software Availability: Nov-2025



Hardware

CPU Name: Intel Xeon 6952P
 Max MHz: 3900
 Nominal: 2100
 Enabled: 192 cores, 2 chips, 2 threads/core
 Orderable: 1,2 chips
 Cache L1: 64 KB I + 48 KB D on chip per core
 L2: 2 MB I+D on chip per core
 L3: 480 MB I+D on chip per chip
 Other: None
 Memory: 768 GB (24 x 32 GB 2Rx8 PC5-6400B-R)
 Storage: 200 GB on tmpfs
 Cooling: Air
 Other: None

Software

OS: SUSE Linux Enterprise Server 16.0
 6.12.0-160000.5-default
 Compiler: C/C++: Version 2025.3 of Intel oneAPI DPC++/C++
 Compiler for Linux;
 Fortran: Version 2025.3 of Intel Fortran
 Compiler for Linux
 Compiler Category: Vendor
 Firmware: Version 1.1.6 released Nov-2025
 File System: tmpfs
 System State: Run level 3 (multi-user)
 Base Pointers: 64-bit
 Peak Pointers: 64-bit
 Other: jemalloc memory allocator v5.3
 Power Management: BIOS set to prefer performance at the cost of
 additional power usage.



SPEC CPU®2026 Floating Point Rate Result

Copyright 2026 Standard Performance Evaluation Corporation

Dell Inc.

SPECrate®2026_fp_base = 811

PowerEdge R770AP (Intel Xeon 6952P)

SPECrate®2026_fp_peak = 834

CPU2026 License: 6573
Test Sponsor: Dell Inc.
Tested by: Dell Inc.

Test Date: Feb-2026
Hardware Availability: Dec-2025
Software Availability: Nov-2025

Results Table

| Benchmark | Base | | | | | | | Peak | | | | | | |
|-----------------|--------|-------------|------------|------------|-------------|---------|-------|--------|-------------|-------------|------------|-------------|---------|-------|
| | Copies | Seconds | Ratio | Seconds | Ratio | Seconds | Ratio | Copies | Seconds | Ratio | Seconds | Ratio | Seconds | Ratio |
| 709.cactus_r | 384 | 225 | 1470 | 226 | 1460 | | | 384 | 225 | 1470 | 226 | 1460 | | |
| 722.palm_r | 384 | 694 | 731 | 692 | 733 | | | 384 | 694 | 731 | 692 | 733 | | |
| 731.ascenc_r | 384 | 313 | 1030 | 313 | 1030 | | | 384 | 298 | 1080 | 297 | 1090 | | |
| 736.ocio_r | 384 | 388 | 865 | 389 | 864 | | | 384 | 388 | 865 | 389 | 864 | | |
| 737.gmsh_r | 384 | 250 | 706 | 250 | 705 | | | 384 | 238 | 740 | 238 | 739 | | |
| 748.flightdm_r | 384 | 255 | 1080 | 256 | 1070 | | | 384 | 208 | 1320 | 208 | 1320 | | |
| 749.fotonik3d_r | 384 | 1197 | 371 | 1195 | 371 | | | 384 | 1197 | 371 | 1195 | 371 | | |
| 765.roms_r | 384 | 1509 | 401 | 1499 | 404 | | | 384 | 1509 | 401 | 1499 | 404 | | |
| 766.femflow_r | 384 | 283 | 1990 | 284 | 1980 | | | 384 | 283 | 1990 | 284 | 1980 | | |
| 767.nest_r | 384 | 327 | 931 | 327 | 932 | | | 384 | 316 | 963 | 316 | 965 | | |
| 772.marian_r | 384 | 538 | 1130 | 541 | 1120 | | | 384 | 538 | 1130 | 541 | 1120 | | |
| 782.lbm_r | 384 | 598 | 368 | 597 | 368 | | | 384 | 598 | 368 | 597 | 368 | | |

SPECrate®2026_fp_base = **811**

SPECrate®2026_fp_peak = **834**

Results appear in the order in which they were run. Bold underlined text indicates a median measurement.

Submit Notes

The numactl mechanism was used to bind copies to processors. The config file option 'submit' was used to generate numactl commands to bind each copy to a specific processor. For details, please see the config file.

Operating System Notes

Stack size set to unlimited using "ulimit -s unlimited"

Environment Variables Notes

Environment variables set by runcpu before the start of the run:
LD_LIBRARY_PATH = "/mnt/ramdisk/cpu2026rc2/lib"
MALLOC_CONF = "retain:true"

General Notes

Binaries compiled on a system with 2x Intel Xeon Platinum 8280M CPU + 384GB RAM memory using CentOS Stream 9.
Transparent Huge Pages enabled by default
Prior to runcpu invocation
Filesystem page cache synced and cleared with:
sync; echo 3> /proc/sys/vm/drop_caches

(Continued on next page)



SPEC CPU®2026 Floating Point Rate Result

Copyright 2026 Standard Performance Evaluation Corporation

Dell Inc.

SPECrate®2026_fp_base = 811

PowerEdge R770AP (Intel Xeon 6952P)

SPECrate®2026_fp_peak = 834

CPU2026 License: 6573

Test Sponsor: Dell Inc.

Tested by: Dell Inc.

Test Date: Feb-2026

Hardware Availability: Dec-2025

Software Availability: Nov-2025

General Notes (Continued)

runcpu command invoked through numactl i.e.:

```
numactl --interleave=all runcpu <etc>
```

jemalloc, a general purpose malloc implementation
 built with the CentOS Stream 9, and the system compiler gcc 11.5.0
 sources available from jemalloc.net or <https://github.com/jemalloc/jemalloc/releases>
 Benchmark run from a 200 GB ramdisk created with the cmd: "mount -t tmpfs -o size=200G tmpfs /mnt/ramdisk"

Platform Notes

BIOS Settings:

Sub NUMA Cluster : Enabled

SST-Performance Profile : Operating Point 2 | P1: 2.3 GHz, TDP:400w, Core Count:72

System Profile : Custom

CPU Power Management : Maximum Performance

C-States : Autonomous

Latency Optimized Mode : Enabled

Energy Efficient Policy : Performance

Sysinfo program /mnt/ramdisk/cpu2026rc2/bin/sysinfo

Rev: 069f95da7e7f5d81b2ce48a82150e54f

running on R7703AP-R770AP Thu Feb 5 13:11:56 2026

SUT (System Under Test) info as seen by some common utilities.

Table of contents

1. uname -srvm
2. w
3. Username
4. ulimit -a
5. sysinfo process ancestry
6. /proc/cpuinfo
7. lscpu
8. numactl --hardware
9. /proc/meminfo
10. Systemd service manager version: systemd 257 (257.7+suse.19.ga0dfd5de4c)
11. Services, from systemctl list-unit-files
12. Linux kernel boot-time arguments, from /proc/cmdline
13. cpupower frequency-info
14. sysctl
15. /sys/kernel/mm/transparent_hugepage
16. /sys/kernel/mm/transparent_hugepage/khugepaged
17. OS release

(Continued on next page)



SPEC CPU®2026 Floating Point Rate Result

Copyright 2026 Standard Performance Evaluation Corporation

Dell Inc.

SPECrate®2026_fp_base = 811

PowerEdge R770AP (Intel Xeon 6952P)

SPECrate®2026_fp_peak = 834

CPU2026 License: 6573
Test Sponsor: Dell Inc.
Tested by: Dell Inc.

Test Date: Feb-2026
Hardware Availability: Dec-2025
Software Availability: Nov-2025

Platform Notes (Continued)

18. Disk information
19. /sys/devices/virtual/dmi/id
20. dmidecode
21. BIOS

1. `uname -srvm`
Linux 6.12.0-160000.5-default #1 SMP PREEMPT_DYNAMIC Wed Sep 10 15:26:25 UTC 2025 (3545bbd) x86_64

2. `w`
13:11:56 up 12:54, 1 user, load average: 152.77, 319.25, 357.30
USER TTY FROM LOGIN@ IDLE JCPU PCPU WHAT
root tty1 - 00:19 12:35m 1.44s 0.01s /bin/bash
/home/DellFiles/bin/Intel/dell-run-speccpu.sh rate --define DL-VERS=7.0_T01 --output_format html,pdf,txt

3. Username
From environment variable \$USER: root

4. `ulimit -a`
real-time non-blocking time (microseconds, -R) unlimited
core file size (blocks, -c) unlimited
data seg size (kbytes, -d) unlimited
scheduling priority (-e) 0
file size (blocks, -f) unlimited
pending signals (-i) 3092901
max locked memory (kbytes, -l) 8192
max memory size (kbytes, -m) unlimited
open files (-n) 1024
pipe size (512 bytes, -p) 8
POSIX message queues (bytes, -q) 819200
real-time priority (-r) 0
stack size (kbytes, -s) unlimited
cpu time (seconds, -t) unlimited
max user processes (-u) 3092901
virtual memory (kbytes, -v) unlimited
file locks (-x) unlimited

5. `sysinfo process ancestry`
/usr/lib/systemd/systemd --switched-root --system --deserialize=47
login -- root
-bash
/bin/bash /home/DellFiles/bin/DELL_rate.sh

(Continued on next page)



SPEC CPU®2026 Floating Point Rate Result

Copyright 2026 Standard Performance Evaluation Corporation

Dell Inc.

SPECrate®2026_fp_base = 811

PowerEdge R770AP (Intel Xeon 6952P)

SPECrate®2026_fp_peak = 834

CPU2026 License: 6573
Test Sponsor: Dell Inc.
Tested by: Dell Inc.

Test Date: Feb-2026
Hardware Availability: Dec-2025
Software Availability: Nov-2025

Platform Notes (Continued)

```

/bin/bash /home/DellFiles/bin/dell-run-main.sh rate
/bin/bash /home/DellFiles/bin/dell-run-main.sh rate
/bin/bash /home/DellFiles/bin/Intel/dell-run-speccpu.sh rate --define DL-VERS=7.0_T01 --output_format
html,pdf,txt
/bin/bash /home/DellFiles/bin/Intel/dell-run-speccpu.sh rate --define DL-VERS=7.0_T01 --output_format
html,pdf,txt
runcpu --nobuild --reportable --action validate --define default-platform-flags --copies 384 -c
ic2025.3-graniterapids-cpu2026-0.902-rate-20260121.cfg --define smt-on --define cores=192 --define
physicalfirst --define invoke_with_interleave --define drop_caches --tune base,peak -o all --iterations 2
--define DL-VERS=7.0_T01 --output_format html,pdf,txt fprate
runcpu --nobuild --reportable --action validate --define default-platform-flags --copies 384 --configfile
ic2025.3-graniterapids-cpu2026-0.902-rate-20260121.cfg --define smt-on --define cores=192 --define
physicalfirst --define invoke_with_interleave --define drop_caches --tune base,peak --output_format all
--iterations 2 --define DL-VERS=7.0_T01 --output_format html,pdf,txt --nopower --runmode rate --tune
base:peak --size refrate fprate --nopreenv --note-preenv --logfile
$SPEC/tmp/CPU2026.002/templogs/preenv.fprate.002.0.log --lognum 002.0 --from_runcpu 2
specperl $SPEC/bin/sysinfo
$SPEC = /mnt/ramdisk/cpu2026rc2

```

```

-----
6. /proc/cpuinfo
model name      : Intel(R) Xeon(R) 6952P
vendor_id      : GenuineIntel
cpu family     : 6
model          : 173
stepping       : 1
microcode      : 0x10003f3
bugs           : spectre_v1 spectre_v2 spec_store_bypass swaggs bhi spectre_v2_user
cpu cores     : 96
siblings      : 192
2 physical ids (chips)
384 processors (hardware threads)
physical id 0: core ids 0-31,64-95,128-159
physical id 1: core ids 0-31,64-95,128-159
physical id 0: apicids 0-63,128-191,256-319
physical id 1: apicids 512-575,640-703,768-831

```

Caution: /proc/cpuinfo data regarding chips, cores, and threads is not necessarily reliable, especially for virtualized systems. Use the above data carefully.

7. lscpu

```

From lscpu from util-linux 2.41.1:
Architecture:      x86_64
CPU op-mode(s):    32-bit, 64-bit
Address sizes:      52 bits physical, 57 bits virtual
Byte Order:        Little Endian

```

(Continued on next page)



SPEC CPU®2026 Floating Point Rate Result

Copyright 2026 Standard Performance Evaluation Corporation

Dell Inc.

SPECrate®2026_fp_base = 811

PowerEdge R770AP (Intel Xeon 6952P)

SPECrate®2026_fp_peak = 834

CPU2026 License: 6573
Test Sponsor: Dell Inc.
Tested by: Dell Inc.

Test Date: Feb-2026
Hardware Availability: Dec-2025
Software Availability: Nov-2025

Platform Notes (Continued)

```

CPU(s): 384
On-line CPU(s) list: 0-383
Vendor ID: GenuineIntel
Model name: Intel(R) Xeon(R) 6952P
CPU family: 6
Model: 173
Thread(s) per core: 2
Core(s) per socket: 96
Socket(s): 2
Stepping: 1
BogoMIPS: 5000.00
Flags: fpu vme de pse tsc msr pae mce cx8 apic sep mtrr pge mca cmov pat
pse36 clflush dts acpi mmx fxsr sse sse2 ss ht tm pbe syscall nx
pdpe1gb rdtscp lm constant_tsc art arch_perfmon pebs bts rep_good
nopl xtopology nonstop_tsc cpuid aperfperf tsc_known_freq pni
pclmulqdq dtes64 monitor ds_cpl vmx smx est tm2 ssse3 sdbg fma
cx16 xtpr pdcm pcid dca sse4_1 sse4_2 x2apic movbe popcnt
tsc_deadline_timer aes xsave avx f16c rdrand lahf_lm abm
3dnowprefetch cpuid_fault epb cat_l3 cat_l2 cdp_l3 intel_ppin
cdp_l2 ssbd mba ibrs ibpb stibp ibrs_enhanced tpr_shadow
flexpriority ept vpid ept_ad fsgsbase tsc_adjust bmi1 avx2 smep
bmi2 erms invpcid cqm rdt_a avx512f avx512dq rdseed adx smap
avx512ifma clflushopt clwb intel_pt avx512cd sha_ni avx512bw
avx512vl xsaveopt xsavec xgetbv1 xsaves cqm_llc cqm_occup_llc
cqm_mbm_total cqm_mbm_local split_lock_detect user_shstk avx_vnni
avx512_bf16 wbnoinvd dtherm ida arat pln pts hfi vnmi avx512vbmi
umip pku ospke waitpkg avx512_vbmi2 gfni vaes vpclmulqdq
avx512_vnni avx512_bitalg avx512_vpopcntdq la57 rdpid
bus_lock_detect cldemote movdiri movdir64b enqcmd fsrm md_clear
serialize tsxldtrk pconfig arch_lbr ibt amx_bf16 avx512_fp16
amx_tile amx_int8 flush_lld arch_capabilities
Virtualization: VT-x
L1d cache: 9 MiB (192 instances)
L1i cache: 12 MiB (192 instances)
L2 cache: 384 MiB (192 instances)
L3 cache: 960 MiB (2 instances)
NUMA node(s): 6
NUMA node0 CPU(s): 0,2,4,6,8,10,12,14,16,18,20,22,24,26,28,30,32,34,36,38,40,42,44,46
,48,50,52,54,56,58,60,62,192,194,196,198,200,202,204,206,208,210,2
12,214,216,218,220,222,224,226,228,230,232,234,236,238,240,242,244
,246,248,250,252,254
NUMA node1 CPU(s): 64,66,68,70,72,74,76,78,80,82,84,86,88,90,92,94,96,98,100,102,104,
106,108,110,112,114,116,118,120,122,124,126,256,258,260,262,264,26
6,268,270,272,274,276,278,280,282,284,286,288,290,292,294,296,298,
300,302,304,306,308,310,312,314,316,318
NUMA node2 CPU(s): 128,130,132,134,136,138,140,142,144,146,148,150,152,154,156,158,16
0,162,164,166,168,170,172,174,176,178,180,182,184,186,188,190,320,

```

(Continued on next page)



SPEC CPU®2026 Floating Point Rate Result

Copyright 2026 Standard Performance Evaluation Corporation

Dell Inc.

SPECrate®2026_fp_base = 811

PowerEdge R770AP (Intel Xeon 6952P)

SPECrate®2026_fp_peak = 834

CPU2026 License: 6573
Test Sponsor: Dell Inc.
Tested by: Dell Inc.

Test Date: Feb-2026
Hardware Availability: Dec-2025
Software Availability: Nov-2025

Platform Notes (Continued)

```

322,324,326,328,330,332,334,336,338,340,342,344,346,348,350,352,35
4,356,358,360,362,364,366,368,370,372,374,376,378,380,382
NUMA node3 CPU(s): 1,3,5,7,9,11,13,15,17,19,21,23,25,27,29,31,33,35,37,39,41,43,45,47
,49,51,53,55,57,59,61,63,193,195,197,199,201,203,205,207,209,211,2
13,215,217,219,221,223,225,227,229,231,233,235,237,239,241,243,245
,247,249,251,253,255
NUMA node4 CPU(s): 65,67,69,71,73,75,77,79,81,83,85,87,89,91,93,95,97,99,101,103,105,
107,109,111,113,115,117,119,121,123,125,127,129,131,133,135,137,139,141,143,145,147,149,151,153,155,157,159,16
1,163,165,167,169,171,173,175,177,179,181,183,185,187,189,191,193,195,197,199,201,203,205,207,209,211,213,215,217,219,221,223,225,227,229,231,233,235,237,239,241,243,245,247,249,251,253,255
NUMA node5 CPU(s): 129,131,133,135,137,139,141,143,145,147,149,151,153,155,157,159,16
1,163,165,167,169,171,173,175,177,179,181,183,185,187,189,191,193,195,197,199,201,203,205,207,209,211,213,215,217,219,221,223,225,227,229,231,233,235,237,239,241,243,245,247,249,251,253,255
Vulnerability Gather data sampling: Not affected
Vulnerability Indirect target selection: Not affected
Vulnerability Itlb multihit: Not affected
Vulnerability L1tf: Not affected
Vulnerability Mds: Not affected
Vulnerability Meltdown: Not affected
Vulnerability Mmio stale data: Not affected
Vulnerability Reg file data sampling: Not affected
Vulnerability Retbleed: Not affected
Vulnerability Spec rstack overflow: Not affected
Vulnerability Spec store bypass: Mitigation; Speculative Store Bypass disabled via prctl
Vulnerability Spectre v1: Mitigation; usercopy/swaps barriers and __user pointer
sanitization
Vulnerability Spectre v2: Mitigation; Enhanced / Automatic IBRS; IBPB conditional;
PBR SB-eIBRS Not affected; BHI BHI_DIS_S
Vulnerability Srbds: Not affected
Vulnerability Tsa: Not affected
Vulnerability Tsx async abort: Not affected

```

From lscpu --cache:

| NAME | ONE-SIZE | ALL-SIZE | WAYS | TYPE | LEVEL | SETS | PHY-LINE | COHERENCY-SIZE |
|------|----------|----------|------|-------------|-------|--------|----------|----------------|
| L1d | 48K | 9M | 12 | Data | 1 | 64 | 1 | 64 |
| L1i | 64K | 12M | 16 | Instruction | 1 | 64 | 1 | 64 |
| L2 | 2M | 384M | 16 | Unified | 2 | 2048 | 1 | 64 |
| L3 | 480M | 960M | 16 | Unified | 3 | 491520 | 1 | 64 |

8. numactl --hardware

NOTE: a numactl 'node' might or might not correspond to a physical chip.

available: 6 nodes (0-5)

node 0 cpus:

0,2,4,6,8,10,12,14,16,18,20,22,24,26,28,30,32,34,36,38,40,42,44,46,48,50,52,54,56,58,60,62,192,194,196,198,200,202,204,206,208,210,212,214,216,218,220,222,224,226,228,230,232,234,236,238,240,242,244,246,248,250,252

(Continued on next page)



SPEC CPU®2026 Floating Point Rate Result

Copyright 2026 Standard Performance Evaluation Corporation

Dell Inc.

SPECrate®2026_fp_base = 811

PowerEdge R770AP (Intel Xeon 6952P)

SPECrate®2026_fp_peak = 834

CPU2026 License: 6573
Test Sponsor: Dell Inc.
Tested by: Dell Inc.

Test Date: Feb-2026
Hardware Availability: Dec-2025
Software Availability: Nov-2025

Platform Notes (Continued)

```

,254
node 0 size: 128568 MB
node 0 free: 115385 MB
node 1 cpus:
64,66,68,70,72,74,76,78,80,82,84,86,88,90,92,94,96,98,100,102,104,106,108,110,112,114,116,118,120,122,124,1
26,256,258,260,262,264,266,268,270,272,274,276,278,280,282,284,286,288,290,292,294,296,298,300,302,304,306,
308,310,312,314,316,318
node 1 size: 129000 MB
node 1 free: 128553 MB
node 2 cpus:
128,130,132,134,136,138,140,142,144,146,148,150,152,154,156,158,160,162,164,166,168,170,172,174,176,178,180
,182,184,186,188,190,320,322,324,326,328,330,332,334,336,338,340,342,344,346,348,350,352,354,356,358,360,36
2,364,366,368,370,372,374,376,378,380,382
node 2 size: 128959 MB
node 2 free: 128516 MB
node 3 cpus:
1,3,5,7,9,11,13,15,17,19,21,23,25,27,29,31,33,35,37,39,41,43,45,47,49,51,53,55,57,59,61,63,193,195,197,199,
201,203,205,207,209,211,213,215,217,219,221,223,225,227,229,231,233,235,237,239,241,243,245,247,249,251,253
,255
node 3 size: 129000 MB
node 3 free: 128586 MB
node 4 cpus:
65,67,69,71,73,75,77,79,81,83,85,87,89,91,93,95,97,99,101,103,105,107,109,111,113,115,117,119,121,123,125,1
27,257,259,261,263,265,267,269,271,273,275,277,279,281,283,285,287,289,291,293,295,297,299,301,303,305,307,
309,311,313,315,317,319
node 4 size: 129000 MB
node 4 free: 128564 MB
node 5 cpus:
129,131,133,135,137,139,141,143,145,147,149,151,153,155,157,159,161,163,165,167,169,171,173,175,177,179,181
,183,185,187,189,191,321,323,325,327,329,331,333,335,337,339,341,343,345,347,349,351,353,355,357,359,361,36
3,365,367,369,371,373,375,377,379,381,383
node 5 size: 128922 MB
node 5 free: 128501 MB
node distances:
node      0      1      2      3      4      5
0:      10      15      17      21      28      26
1:      15      10      15      23      26      23
2:      17      15      10      26      23      21
3:      21      28      26      10      15      17
4:      23      26      23      15      10      15
5:      26      23      21      17      15      10

```

```

-----
9. /proc/meminfo
   MemTotal:          792014284 kB

'who -r' did not return a run level

```

(Continued on next page)



SPEC CPU®2026 Floating Point Rate Result

Copyright 2026 Standard Performance Evaluation Corporation

Dell Inc.

SPECrate®2026_fp_base = 811

PowerEdge R770AP (Intel Xeon 6952P)

SPECrate®2026_fp_peak = 834

CPU2026 License: 6573
Test Sponsor: Dell Inc.
Tested by: Dell Inc.

Test Date: Feb-2026
Hardware Availability: Dec-2025
Software Availability: Nov-2025

Platform Notes (Continued)

10. Systemd service manager version: systemd 257 (257.7+suse.19.ga0dfd5de4c)
Default Target Status
multi-user running

11. Services, from systemctl list-unit-files

| STATE | UNIT FILES |
|-----------------|--|
| enabled | NetworkManager NetworkManager-dispatcher NetworkManager-wait-online audit-rules auditd bluetooth chronyd dbus-broker firewallld gdm getty@ irqbalance issue-generator kbdsettings klog lvm2-monitor nvme-fc-boot-connections nvme-fc-autoconnect rollback rsyslog smartd soft-reboot-cleanup sshd systemd-pstore wpa_supplicant wtmpdb-update-boot |
| enabled-runtime | systemd-remount-fs |
| disabled | accounts-daemon blk-availability bluetooth-mesh boot-sysctl ca-certificates ca-certificates-setup chrony-wait console-getty cups debug-shell dnsmasq gnome-remote-desktop gnome-remote-desktop-configuration gpm grub2-once hwloc-dump-hwdata issue-add-ssh-keys kea-ctrl-agent kea-dhcp-ddns kea-dhcp4 kea-dhcp6 kernel-sysctl kexec-load lastlog2-import lunmask lvm-devices-import man-db-create multipathd named nftables nis-domainname pkcs11_eventmgr rpmconfigcheck rsyncd rtkit-daemon serial-getty@ setup-systemd-proxy-env smartd_generate_opts snmpd snmptrapd speech-dispatcherd systemd-boot-check-no-failures systemd-confext systemd-network-generator systemd-sysext systemd-time-wait-sync systemd-timesyncd systemd-udev-load-credentials udisks2 upower wpa_supplicant@ |
| indirect | pcscd systemd-userdbd |

12. Linux kernel boot-time arguments, from /proc/cmdline

BOOT_IMAGE=/boot/vmlinuz-6.12.0-160000.5-default
root=UUID=0b344ecf-2e5a-4bf3-b6c0-aecf8a6f67c0
mitigations=auto
quiet
security=selinux
selinux=1

13. cpupower frequency-info

analyzing CPU 0:
Unable to determine current policy
boost state support:
Supported: yes
Active: yes

14. sysctl

kernel.numa_balancing 1
kernel.randomize_va_space 2

(Continued on next page)



SPEC CPU®2026 Floating Point Rate Result

Copyright 2026 Standard Performance Evaluation Corporation

Dell Inc.

SPECrate®2026_fp_base = 811

PowerEdge R770AP (Intel Xeon 6952P)

SPECrate®2026_fp_peak = 834

CPU2026 License: 6573
Test Sponsor: Dell Inc.
Tested by: Dell Inc.

Test Date: Feb-2026
Hardware Availability: Dec-2025
Software Availability: Nov-2025

Platform Notes (Continued)

```

vm.compaction_proactiveness      20
vm.dirty_background_bytes        0
vm.dirty_background_ratio        10
vm.dirty_bytes                   0
vm.dirty_expire_centisecs        3000
vm.dirty_ratio                   20
vm.dirty_writeback_centisecs     500
vm.dirtytime_expire_seconds      43200
vm.extfrag_threshold             500
vm.min_unmapped_ratio            1
vm.nr_hugepages                  0
vm.nr_hugepages_mempolicy        0
vm.nr_overcommit_hugepages       0
vm.swappiness                     60
vm.watermark_boost_factor        15000
vm.watermark_scale_factor        10
vm.zone_reclaim_mode             0

```

```

-----
15. /sys/kernel/mm/transparent_hugepage
defrag          always defer+madvice [madvice] never
enabled         [always] madvice never
hpage_pmd_size 2097152
shmem_enabled   always within_size advise [never] deny force

```

```

-----
16. /sys/kernel/mm/transparent_hugepage/khugepaged
alloc_sleep_millisecs  60000
defrag                 1
max_ptes_none          511
max_ptes_shared        256
max_ptes_swap          64
pages_to_scan          4096
scan_sleep_millisecs   10000

```

```

-----
17. OS release
From /etc/*-release /etc/*-version
os-release SUSE Linux Enterprise Server 16.0

```

```

-----
18. Disk information
SPEC is set to: /mnt/ramdisk/cpu2026rc2
Filesystem      Type  Size  Used Avail Use% Mounted on
tmpfs           tmpfs 200G  13G  188G   7% /mnt/ramdisk

```

(Continued on next page)



SPEC CPU®2026 Floating Point Rate Result

Copyright 2026 Standard Performance Evaluation Corporation

Dell Inc.

SPECrate®2026_fp_base = 811

PowerEdge R770AP (Intel Xeon 6952P)

SPECrate®2026_fp_peak = 834

CPU2026 License: 6573
Test Sponsor: Dell Inc.
Tested by: Dell Inc.

Test Date: Feb-2026
Hardware Availability: Dec-2025
Software Availability: Nov-2025

Platform Notes (Continued)

19. /sys/devices/virtual/dmi/id
Vendor: Dell Inc.
Product: PowerEdge R770AP
Product Family: PowerEdge
Serial: R7703AP

20. dmidecode

Additional information from dmidecode 3.6 follows. WARNING: Use caution when you interpret this section. The 'dmidecode' program reads system data which is "intended to allow hardware to be accurately determined", but the intent may not be met, as there are frequent changes to hardware, firmware, and the "DMTF SMBIOS" standard.

Memory:

2x 00AD063200AD HMC888AHBRA286N 32 GB 2 rank 6400
2x 00AD063200AD HMC888AHBRA477N 32 GB 2 rank 6400
15x 00CE063200CE M321R4GA3EB2-CCPPF 32 GB 2 rank 6400
2x 00CE063200CE M321R4GA3PB1-CCPQC 32 GB 2 rank 6400
3x 00CE063200CE M321R4GA3PB2-CCPKC 32 GB 2 rank 6400

21. BIOS

(This section combines info from /sys/devices and dmidecode.)

BIOS Vendor: Dell Inc.
BIOS Version: 1.1.6
BIOS Date: 11/06/2025
BIOS Revision: 1.1

Compiler Version Notes

=====
C | 782.lbm_r(base, peak)

Intel(R) oneAPI DPC++/C++ Compiler for applications running on Intel(R) 64,
Version 2025.3.0 Build 20251010
Copyright (C) 1985-2025 Intel Corporation. All rights reserved.

=====
C++ | 731.astcenc_r(base, peak) 736.ocio_r(base, peak)
| 748.flightdm_r(base, peak) 766.femflow_r(base, peak)
| 767.nest_r(base, peak) 772.marian_r(base, peak)

Intel(R) oneAPI DPC++/C++ Compiler for applications running on Intel(R) 64,
Version 2025.3.0 Build 20251010
Copyright (C) 1985-2025 Intel Corporation. All rights reserved.

(Continued on next page)



SPEC CPU®2026 Floating Point Rate Result

Copyright 2026 Standard Performance Evaluation Corporation

Dell Inc.

SPECrate®2026_fp_base = 811

PowerEdge R770AP (Intel Xeon 6952P)

SPECrate®2026_fp_peak = 834

CPU2026 License: 6573
Test Sponsor: Dell Inc.
Tested by: Dell Inc.

Test Date: Feb-2026
Hardware Availability: Dec-2025
Software Availability: Nov-2025

Compiler Version Notes (Continued)

=====
C++, C | 709.cactus_r(base, peak) 737.gmsh_r(base, peak)
=====

Intel(R) oneAPI DPC++/C++ Compiler for applications running on Intel(R) 64,
Version 2025.3.0 Build 20251010
Copyright (C) 1985-2025 Intel Corporation. All rights reserved.
=====

=====
Fortran | 722.palm_r(base, peak) 749.fotonik3d_r(base, peak) 765.roms_r(base,
| peak)
=====

Intel(R) Fortran Compiler for applications running on Intel(R) 64, Version
2025.3.0 Build 20251010
Copyright (C) 1985-2025 Intel Corporation. All rights reserved.
=====

Base Compiler Invocation

C benchmarks:
icx

C++ benchmarks:
icpx

Fortran benchmarks:
ifx

Benchmarks using both C and C++:
icpx icx

Base Portability Flags

709.cactus_r: -DSPEC_LP64
722.palm_r: -DSPEC_LP64
731.ascenc_r: -DSPEC_LP64
736.ocio_r: -DSPEC_LP64
737.gmsh_r: -DSPEC_LP64 -fno-associative-math
748.flightdm_r: -DSPEC_LP64
749.fotonik3d_r: -DSPEC_LP64
765.roms_r: -DSPEC_LP64

(Continued on next page)



SPEC CPU®2026 Floating Point Rate Result

Copyright 2026 Standard Performance Evaluation Corporation

Dell Inc.

SPECrate®2026_fp_base = 811

PowerEdge R770AP (Intel Xeon 6952P)

SPECrate®2026_fp_peak = 834

CPU2026 License: 6573

Test Sponsor: Dell Inc.

Tested by: Dell Inc.

Test Date: Feb-2026

Hardware Availability: Dec-2025

Software Availability: Nov-2025

Base Portability Flags (Continued)

766.femflow_r: -DSPEC_LP64

767.nest_r: -DSPEC_LP64

772.marian_r: -DSPEC_LP64

782.lbm_r: -DSPEC_LP64

Base Optimization Flags

C benchmarks:

```
-m64 -std=c18 -Wl,-z,muldefs -xgraniterapids
-mprefer-vector-width=512 -O3 -ffp-model=fast -flto -mfpmath=sse
-funroll-loops -qopt-mem-layout-trans=4 -L/usr/local/jemalloc-5.3.0/lib
-ljemalloc
```

C++ benchmarks:

```
-m64 -std=c++17 -Wl,-z,muldefs -xgraniterapids
-mprefer-vector-width=512 -O3 -ffp-model=fast -flto -mfpmath=sse
-funroll-loops -qopt-mem-layout-trans=4 -L/usr/local/jemalloc-5.3.0/lib
-ljemalloc
```

Fortran benchmarks:

```
-m64 -stand f18 -Wl,-z,muldefs -xgraniterapids
-mprefer-vector-width=512 -O3 -ffp-model=fast -flto -mfpmath=sse
-funroll-loops -qopt-mem-layout-trans=4 -nostandard-realloc-lhs
-align array32byte -auto -L/usr/local/jemalloc-5.3.0/lib -ljemalloc
```

Benchmarks using both C and C++:

```
-m64 -std=c++17 -std=c18 -Wl,-z,muldefs -xgraniterapids
-mprefer-vector-width=512 -O3 -ffp-model=fast -flto -mfpmath=sse
-funroll-loops -qopt-mem-layout-trans=4 -L/usr/local/jemalloc-5.3.0/lib
-ljemalloc
```

Peak Compiler Invocation

C benchmarks:

icx

C++ benchmarks:

icpx

Fortran benchmarks:

ifx

(Continued on next page)



SPEC CPU®2026 Floating Point Rate Result

Copyright 2026 Standard Performance Evaluation Corporation

Dell Inc.

SPECrate®2026_fp_base = 811

PowerEdge R770AP (Intel Xeon 6952P)

SPECrate®2026_fp_peak = 834

CPU2026 License: 6573
Test Sponsor: Dell Inc.
Tested by: Dell Inc.

Test Date: Feb-2026
Hardware Availability: Dec-2025
Software Availability: Nov-2025

Peak Compiler Invocation (Continued)

Benchmarks using both C and C++:
icpx icx

Peak Portability Flags

Same as Base Portability Flags

Peak Optimization Flags

C benchmarks:

782.lbm_r: basepeak = yes

C++ benchmarks:

731.astcenc_r: -m64 -std=c++17 -Wl,-z,muldefs -fprofile-generate(pass 1)
-fprofile-use=default.profddata(pass 2) -xHost(pass 1)
-ffp-model=fast -xgraniterapids(pass 2) -flt0
-mprefer-vector-width=512 -qopt-mem-layout-trans=4 -O3
-mfpmath=sse -funroll-loops
-L/usr/local/jemalloc-5.3.0/lib -ljemalloc

736.ocio_r: basepeak = yes

748.flightdm_r: Same as 731.astcenc_r

766.femflow_r: basepeak = yes

767.nest_r: Same as 731.astcenc_r

772.marian_r: basepeak = yes

Fortran benchmarks:

722.palm_r: basepeak = yes

749.fotonik3d_r: basepeak = yes

765.roms_r: basepeak = yes

Benchmarks using both C and C++:

(Continued on next page)



SPEC CPU®2026 Floating Point Rate Result

Copyright 2026 Standard Performance Evaluation Corporation

Dell Inc.

SPECrate®2026_fp_base = 811

PowerEdge R770AP (Intel Xeon 6952P)

SPECrate®2026_fp_peak = 834

CPU2026 License: 6573

Test Sponsor: Dell Inc.

Tested by: Dell Inc.

Test Date: Feb-2026

Hardware Availability: Dec-2025

Software Availability: Nov-2025

Peak Optimization Flags (Continued)

709.cactus_r: basepeak = yes

```

737.gmsh_r: -m64 -std=c++17 -std=c18 -Wl,-z,muldefs
-fprofile-generate(pass 1)
-fprofile-use=default.profdata(pass 2) -xHost(pass 1)
-ffp-model=fast -xgraniterapids(pass 2) -flto
-mprefer-vector-width=512 -qopt-mem-layout-trans=4 -O3
-mfpmath=sse -funroll-loops
-L/usr/local/jemalloc-5.3.0/lib -ljemalloc

```

The flags files that were used to format this result can be browsed at

<http://www.spec.org/cpu2026/results/flags/Intel-ic2025-official-linux64-cpu2026-0.902.html>

<http://www.spec.org/cpu2026/results/flags/Dell-Platform-Flags-PowerEdge-Intel-Xeon-v1.19a.html>

You can also download the XML flags sources by saving the following links:

<http://www.spec.org/cpu2026/results/flags/Intel-ic2025-official-linux64-cpu2026-0.902.xml>

<http://www.spec.org/cpu2026/results/flags/Dell-Platform-Flags-PowerEdge-Intel-Xeon-v1.19a.xml>

SPEC CPU and SPECrate are registered trademarks of the Standard Performance Evaluation Corporation. All other brand and product names appearing in this result are trademarks or registered trademarks of their respective holders.

For questions about this result, please contact the tester. For other inquiries, please contact info@spec.org.

Tested with SPEC CPU®2026 v0.902.0 on 2026-02-05 14:11:55-0500.

Report generated on 2026-05-11 16:37:49 by CPU2026 PDF formatter (unknown).

Originally published on 2026-05-05.