



SPEC CPU®2026 Floating Point Rate Result

Copyright 2026 Standard Performance Evaluation Corporation

Dell Inc.

SPECrate®2026_fp_base = 993

PowerEdge R7725 (AMD EPYC 9965 192-Core Processor)

SPECrate®2026_fp_peak = 993

CPU2026 License: 6573

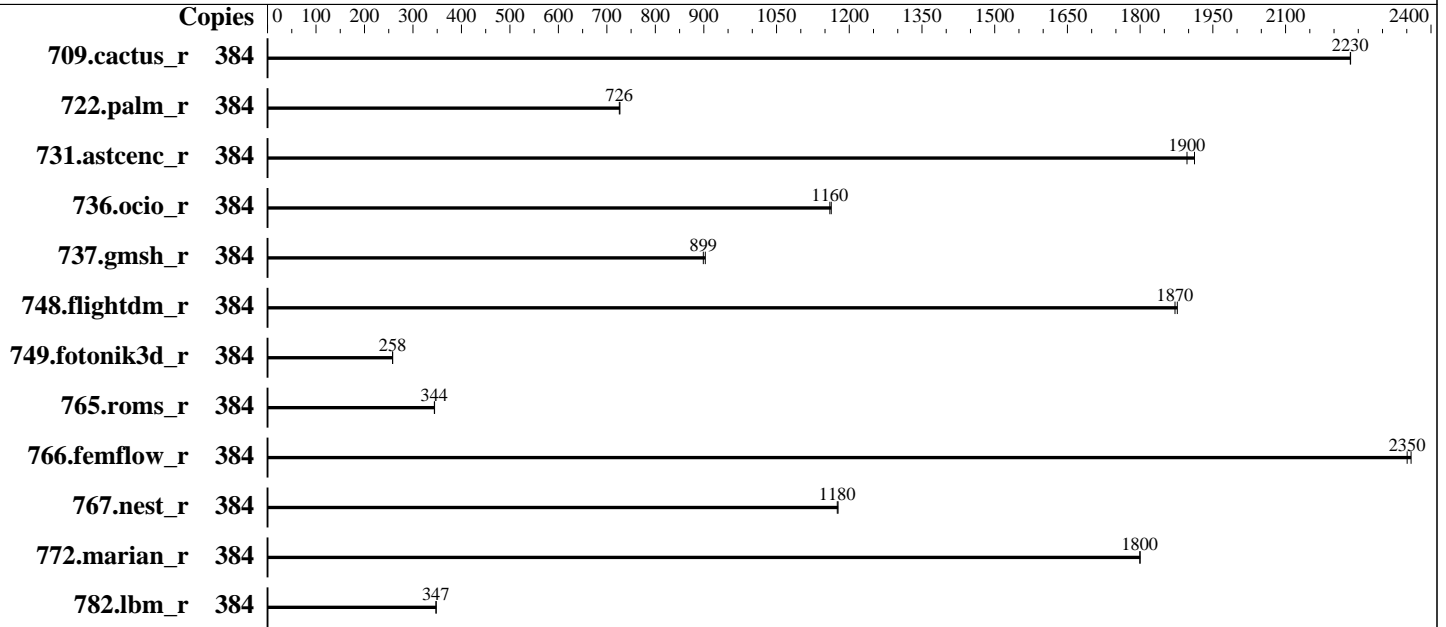
Test Date: Feb-2026

Test Sponsor: Dell Inc.

Hardware Availability: Mar-2025

Tested by: Dell Inc.

Software Availability: Jan-2026



Hardware

CPU Name: AMD EPYC 9965
 Max MHz: 3700
 Nominal: 2250
 Enabled: 384 cores, 2 chips, 2 threads/core
 Orderable: 1,2 chips
 Cache L1: 32 KB I + 48 KB D on chip per core
 L2: 1 MB I+D on chip per core
 L3: 384 MB I+D on chip per chip, 32 MB shared / 16 cores
 Other: None
 Memory: 1536 GB (24 x 64 GB 2Rx4 PC5-6400B-R)
 Storage: 350 GB on tmpfs
 Cooling: Air
 Other: None

Software

OS: Ubuntu 24.04.2 LTS
 6.8.0-55-generic
 Compiler: C/C++/Fortran: Version 5.1.0 of AOCC
 Compiler Category: Vendor
 Firmware: Version 1.5.3 released Oct-2025
 File System: tmpfs
 System State: Run level 3 (multi-user)
 Base Pointers: 64-bit
 Peak Pointers: 64-bit
 Other: None
 Power Management: BIOS and OS set to prefer performance at the cost of additional power usage.



SPEC CPU®2026 Floating Point Rate Result

Copyright 2026 Standard Performance Evaluation Corporation

Dell Inc.

SPECrate®2026_fp_base = 993

PowerEdge R7725 (AMD EPYC 9965 192-Core Processor)

SPECrate®2026_fp_peak = 993

CPU2026 License: 6573
Test Sponsor: Dell Inc.
Tested by: Dell Inc.

Test Date: Feb-2026
Hardware Availability: Mar-2025
Software Availability: Jan-2026

Results Table

Benchmark	Base							Peak						
	Copies	Seconds	Ratio	Seconds	Ratio	Seconds	Ratio	Copies	Seconds	Ratio	Seconds	Ratio	Seconds	Ratio
709.cactus_r	384	147	2230	<u>148</u>	<u>2230</u>			384	147	2230	<u>148</u>	<u>2230</u>		
722.palm_r	384	<u>698</u>	<u>726</u>	697	727			384	<u>698</u>	<u>726</u>	697	727		
731.ascenc_r	384	169	1910	<u>170</u>	<u>1900</u>			384	169	1910	<u>170</u>	<u>1900</u>		
736.ocio_r	384	<u>290</u>	<u>1160</u>	289	1160			384	<u>290</u>	<u>1160</u>	289	1160		
737.gmsh_r	384	<u>196</u>	<u>899</u>	195	903			384	<u>196</u>	<u>899</u>	195	903		
748.flightdm_r	384	<u>147</u>	<u>1870</u>	147	1880			384	<u>147</u>	<u>1870</u>	147	1880		
749.fotonik3d_r	384	1720	258	<u>1720</u>	<u>258</u>			384	1720	258	<u>1720</u>	<u>258</u>		
765.roms_r	384	1755	345	<u>1758</u>	<u>344</u>			384	1755	345	<u>1758</u>	<u>344</u>		
766.femflow_r	384	239	2360	<u>240</u>	<u>2350</u>			384	239	2360	<u>240</u>	<u>2350</u>		
767.nest_r	384	259	1180	<u>259</u>	<u>1180</u>			384	259	1180	<u>259</u>	<u>1180</u>		
772.marian_r	384	337	1800	<u>337</u>	<u>1800</u>			384	337	1800	<u>337</u>	<u>1800</u>		
782.lbm_r	384	632	348	<u>633</u>	<u>347</u>			384	632	348	<u>633</u>	<u>347</u>		

SPECrate®2026_fp_base = **993**

SPECrate®2026_fp_peak = **993**

Results appear in the order in which they were run. Bold underlined text indicates a median measurement.

Compiler Notes

The AMD64 AOCC Compiler Suite is available at
<http://developer.amd.com/amd-aocc/>

Submit Notes

The config file option 'submit' was used.
'numactl' was used to bind copies to the cores.
See the configuration file for details.

Operating System Notes

'ulimit -s unlimited' was used to set environment stack size limit
'ulimit -l 2097152' was used to set environment locked pages in memory limit

runcpu command invoked through numactl i.e.:
numactl --interleave=all runcpu <etc>

To limit dirty cache to 8% of memory, 'sysctl -w vm.dirty_ratio=8' run as root.
To limit swap usage to minimum necessary, 'sysctl -w vm.swappiness=1' run as root.
To free node-local memory and avoid remote memory usage,
'sysctl -w vm.zone_reclaim_mode=1' run as root.
To clear filesystem caches, 'sync; sysctl -w vm.drop_caches=3' run as root.

(Continued on next page)



SPEC CPU®2026 Floating Point Rate Result

Copyright 2026 Standard Performance Evaluation Corporation

Dell Inc.

SPECrate®2026_fp_base = 993

PowerEdge R7725 (AMD EPYC 9965 192-Core Processor)

SPECrate®2026_fp_peak = 993

CPU2026 License: 6573
Test Sponsor: Dell Inc.
Tested by: Dell Inc.

Test Date: Feb-2026
Hardware Availability: Mar-2025
Software Availability: Jan-2026

Operating System Notes (Continued)

To disable address space layout randomization (ASLR) to reduce run-to-run variability, 'sysctl -w kernel.randomize_va_space=0' run as root.
To enable Transparent Hugepages (THP) for all allocations, 'echo always > /sys/kernel/mm/transparent_hugepage/enabled' and 'echo always > /sys/kernel/mm/transparent_hugepage/defrag' run as root.

Environment Variables Notes

Environment variables set by runcpu before the start of the run:
LD_LIBRARY_PATH =
"/mnt/ramdisk/cpu2026rc2/amd_rate_aocc510_znver5_A_lib/lib:/mnt/ramdisk/cpu2026rc2/amd_rate_aocc510_znver5_A_lib/lib32:"
MALLOC_CONF = "retain:true"

General Notes

Binaries were compiled on a system with 2x AMD EPYC Venice256 CPU + 2TiB Memory using Ubuntu 24.04
Benchmark run from a 350 GB ramdisk created with the cmd: "mount -t tmpfs -o size=350G tmpfs /mnt/ramdisk"

Platform Notes

BIOS Settings:
Virtualization Technology : Disabled
NUMA Nodes Per Socket : 4

System Profile : Custom
CPU Power Management : Maximum Performance
C-States : Disabled
Memory Patrol Scrub : Disabled
PCI ASPM L1 Link Power Management : Disabled
Periodic Directory Rinse Tuning : Blended
Determinism Control : Manual
Determinism Slider : Power Determinism
Optimizer Mode : Enabled
Algorithm Performance Boost Disable : Enabled
ApbDis Fixed DF P-State : P0
Adaptive Allocation : Enabled
Dram Refresh Delay : Performance

Sysinfo program /mnt/ramdisk/cpu2026rc2/bin/sysinfo
Rev: 069f95da7e7f5d81b2ce48a82150e54f
running on SLR7753-R7725 Thu Feb 5 19:14:16 2026

(Continued on next page)



SPEC CPU®2026 Floating Point Rate Result

Copyright 2026 Standard Performance Evaluation Corporation

Dell Inc.

SPECrate®2026_fp_base = 993

PowerEdge R7725 (AMD EPYC 9965 192-Core Processor)

SPECrate®2026_fp_peak = 993

CPU2026 License: 6573
Test Sponsor: Dell Inc.
Tested by: Dell Inc.

Test Date: Feb-2026
Hardware Availability: Mar-2025
Software Availability: Jan-2026

Platform Notes (Continued)

SUT (System Under Test) info as seen by some common utilities.

Table of contents

1. uname -srvm
2. w
3. Username
4. ulimit -a
5. sysinfo process ancestry
6. /proc/cpuinfo
7. lscpu
8. numactl --hardware
9. /proc/meminfo
10. who -r
11. Systemd service manager version: systemd 255 (255.4-1ubuntu8.6)
12. Services, from systemctl list-unit-files
13. Linux kernel boot-time arguments, from /proc/cmdline
14. cpupower frequency-info
15. tuned-adm active
16. sysctl
17. /sys/kernel/mm/transparent_hugepage
18. /sys/kernel/mm/transparent_hugepage/khugepaged
19. OS release
20. Disk information
21. /sys/devices/virtual/dmi/id
22. dmidecode
23. BIOS

```
1. uname -srvm
Linux 6.8.0-55-generic #57-Ubuntu SMP PREEMPT_DYNAMIC Wed Feb 12 23:42:21 UTC 2025 x86_64
```

```
2. w
19:14:16 up 3:16, 1 user, load average: 181.91, 558.05, 668.92
USER      TTY      FROM          LOGIN@      IDLE        JCPU      PCPU      WHAT
root     tty1      -              15:58       3:07m  3.10s   1.65s /bin/bash ./amd_rate_aocc510_znver5_A1.sh
```

```
3. Username
From environment variable $USER: root
```

```
4. ulimit -a
```

(Continued on next page)



SPEC CPU®2026 Floating Point Rate Result

Copyright 2026 Standard Performance Evaluation Corporation

Dell Inc.

SPECrate®2026_fp_base = 993

PowerEdge R7725 (AMD EPYC 9965 192-Core Processor)

SPECrate®2026_fp_peak = 993

CPU2026 License: 6573

Test Sponsor: Dell Inc.

Tested by: Dell Inc.

Test Date: Feb-2026

Hardware Availability: Mar-2025

Software Availability: Jan-2026

Platform Notes (Continued)

```

time(seconds)          unlimited
file(blocks)           unlimited
data(kbytes)           unlimited
stack(kbytes)          unlimited
coredump(blocks)       0
memory(kbytes)         unlimited
locked memory(kbytes)  2097152
process                6187509
nofiles                1024
vmemory(kbytes)        unlimited
locks                  unlimited
rtprio                 0

```

5. sysinfo process ancestry

```

/sbin/init
/bin/login -p --
-bash
/bin/bash /home/DellFiles/bin/DELL_rate.sh
/bin/bash /home/DellFiles/bin/dell-run-main.sh rate
/bin/bash /home/DellFiles/bin/dell-run-main.sh rate
/bin/bash /home/DellFiles/bin/AMD/dell-run-speccpu.sh rate --define DL-VERS=7.0_T01 --output_format
html,pdf,txt
python3 ./run_amd_rate_aocc510_znver5_A1.py
/bin/bash ./amd_rate_aocc510_znver5_A1.sh
runcpu --config amd_rate_aocc510_znver5_A1.cfg --tune base --reportable --iterations 2 --define
DL-VERS=7.0_T01 --output_format html,pdf,txt fprate
runcpu --configfile amd_rate_aocc510_znver5_A1.cfg --tune base --reportable --iterations 2 --define
DL-VERS=7.0_T01 --output_format html,pdf,txt --nopower --runmode rate --tune base --size
test:train:refrate fprate --nopreenv --note-preenv --logfile
$SPEC/tmp/CPU2026.002/templogs/preenv.fprate.002.0.log --lognum 002.0 --from_runcpu 2
specperl $SPEC/bin/sysinfo
$SPEC = /mnt/ramdisk/cpu2026rc2

```

6. /proc/cpuinfo

```

model name           : AMD EPYC 9965 192-Core Processor
vendor_id            : AuthenticAMD
cpu family           : 26
model                : 17
stepping             : 0
microcode            : 0xb101054
bugs                  : sysret_ss_attrs spectre_v1 spectre_v2 spec_store_bypass
TLB size             : 192 4K pages
cpu cores            : 192
siblings              : 384
2 physical ids (chips)

```

(Continued on next page)



SPEC CPU®2026 Floating Point Rate Result

Copyright 2026 Standard Performance Evaluation Corporation

Dell Inc.

SPECrate®2026_fp_base = 993

PowerEdge R7725 (AMD EPYC 9965 192-Core Processor)

SPECrate®2026_fp_peak = 993

CPU2026 License: 6573
Test Sponsor: Dell Inc.
Tested by: Dell Inc.

Test Date: Feb-2026
Hardware Availability: Mar-2025
Software Availability: Jan-2026

Platform Notes (Continued)

768 processors (hardware threads)
physical id 0: core ids 0-191
physical id 1: core ids 0-191
physical id 0: apicids 0-383
physical id 1: apicids 512-895

Caution: /proc/cpuinfo data regarding chips, cores, and threads is not necessarily reliable, especially for virtualized systems. Use the above data carefully.

7. lscpu

From lscpu from util-linux 2.39.3:

```

Architecture:                x86_64
CPU op-mode(s):              32-bit, 64-bit
Address sizes:               52 bits physical, 57 bits virtual
Byte Order:                  Little Endian
CPU(s):                      768
On-line CPU(s) list:        0-767
Vendor ID:                   AuthenticAMD
BIOS Vendor ID:             AMD
Model name:                  AMD EPYC 9965 192-Core Processor
BIOS Model name:            AMD EPYC 9965 192-Core Processor      CPU @ 2.2GHz
BIOS CPU family:            107
CPU family:                  26
Model:                       17
Thread(s) per core:         2
Core(s) per socket:         192
Socket(s):                   2
Stepping:                    0
Frequency boost:             enabled
CPU(s) scaling MHz:         61%
CPU max MHz:                 3700.1951
CPU min MHz:                 1500.0000
BogoMIPS:                    4493.33

```

```

Flags:                        fpu vme de pse tsc msr pae mce cx8 apic sep mtrr pge mca cmov pat
pse36 clflush mmx fxsr sse sse2 ht syscall nx mmxext fxsr_opt pdpe1gb
rdtscp lm constant_tsc rep_good amd_lbr_v2 nopl nonstop_tsc cpuid
extd_apicid aperfmperf rapl pni pclmulqdq monitor ssse3 fma cx16 pcid
sse4_1 sse4_2 x2apic movbe popcnt aes xsave avx f16c rdrand lahf_lm
cmp_legacy extapic cr8_legacy abm sse4a misalignsse 3dnowprefetch
osvw ibs skinit wdt tce topoext perfctr_core perfctr_nb bpext
perfctr_llc mwaitx cpb cat_l3 cdp_l3 hw_pstate ssbd mba perfmon_v2
ibrs ibpb stibp ibrs_enhanced vmmcall fsgsbase tsc_adjust bmi1 avx2
smep bmi2 invpcid cqm rdt_a avx512f avx512dq rdseed adx smap
avx512ifma clflushopt clwb avx512cd sha_ni avx512bw avx512vl xsaveopt
xsavec xgetbv1 xsaves cqm_llc cqm_occup_llc cqm_mbm_total
cqm_mbm_local user_shstk avx_vnni avx512_bf16 clzero irperf

```

(Continued on next page)



SPEC CPU®2026 Floating Point Rate Result

Copyright 2026 Standard Performance Evaluation Corporation

Dell Inc.

SPECrate®2026_fp_base = 993

PowerEdge R7725 (AMD EPYC 9965 192-Core Processor)

SPECrate®2026_fp_peak = 993

CPU2026 License: 6573

Test Sponsor: Dell Inc.

Tested by: Dell Inc.

Test Date: Feb-2026

Hardware Availability: Mar-2025

Software Availability: Jan-2026

Platform Notes (Continued)

```

xsaveerptr rdpru wbnoinvd amd_ppin cppc arat npt lbrv svm_lock
nrip_save tsc_scale vmcb_clean flushbyasid decodeassists pausefilter
pfthreshold avic v_vmsave_vmload vgif x2avic v_spec_ctrl vnmi
avx512vbmi umip pku ospke avx512_vbmi2 gfni vaes vpclmulqdq
avx512_vnni avx512_bitalg avx512_vpopcntdq la57 rdpid bus_lock_detect
movdiri movdir64b overflow_recov succor smca avx512_vp2intersect
flush_llid debug_swap

```

```

L1d cache: 18 MiB (384 instances)
L1i cache: 12 MiB (384 instances)
L2 cache: 384 MiB (384 instances)
L3 cache: 768 MiB (24 instances)
NUMA node(s): 8
NUMA node0 CPU(s): 0-47,384-431
NUMA node1 CPU(s): 48-95,432-479
NUMA node2 CPU(s): 96-143,480-527
NUMA node3 CPU(s): 144-191,528-575
NUMA node4 CPU(s): 192-239,576-623
NUMA node5 CPU(s): 240-287,624-671
NUMA node6 CPU(s): 288-335,672-719
NUMA node7 CPU(s): 336-383,720-767
Vulnerability Gather data sampling: Not affected
Vulnerability Itlb multihit: Not affected
Vulnerability L1tf: Not affected
Vulnerability Mds: Not affected
Vulnerability Meltdown: Not affected
Vulnerability Mmio stale data: Not affected
Vulnerability Reg file data sampling: Not affected
Vulnerability Retbleed: Not affected
Vulnerability Spec rstack overflow: Not affected
Vulnerability Spec store bypass: Mitigation; Speculative Store Bypass disabled via prctl
Vulnerability Spectre v1: Mitigation; usercopy/swapgs barriers and __user pointer sanitization
Vulnerability Spectre v2: Mitigation; Enhanced / Automatic IBRS; IBPB conditional; STIBP
always-on; RSB filling; PBRSE-eIBRS Not affected; BHI Not affected
Vulnerability Srbds: Not affected
Vulnerability Tsx async abort: Not affected

```

From `lscpu --cache:`

NAME	ONE-SIZE	ALL-SIZE	WAYS	TYPE	LEVEL	SETS	PHY-LINE	COHERENCY-SIZE
L1d	48K	18M	12	Data	1	64	1	64
L1i	32K	12M	8	Instruction	1	64	1	64
L2	1M	384M	16	Unified	2	1024	1	64
L3	32M	768M	16	Unified	3	32768	1	64

8. `numactl --hardware`

NOTE: a `numactl 'node'` might or might not correspond to a physical chip.
available: 8 nodes (0-7)

(Continued on next page)



SPEC CPU®2026 Floating Point Rate Result

Copyright 2026 Standard Performance Evaluation Corporation

Dell Inc.

SPECrate®2026_fp_base = 993

PowerEdge R7725 (AMD EPYC 9965 192-Core Processor)

SPECrate®2026_fp_peak = 993

CPU2026 License: 6573

Test Sponsor: Dell Inc.

Tested by: Dell Inc.

Test Date: Feb-2026

Hardware Availability: Mar-2025

Software Availability: Jan-2026

Platform Notes (Continued)

```

node 0 cpus: 0-47,384-431
node 0 size: 192584 MB
node 0 free: 187967 MB
node 1 cpus: 48-95,432-479
node 1 size: 193497 MB
node 1 free: 190158 MB
node 2 cpus: 96-143,480-527
node 2 size: 193497 MB
node 2 free: 190087 MB
node 3 cpus: 144-191,528-575
node 3 size: 193481 MB
node 3 free: 179785 MB
node 4 cpus: 192-239,576-623
node 4 size: 193497 MB
node 4 free: 189977 MB
node 5 cpus: 240-287,624-671
node 5 size: 193454 MB
node 5 free: 190041 MB
node 6 cpus: 288-335,672-719
node 6 size: 193497 MB
node 6 free: 190148 MB
node 7 cpus: 336-383,720-767
node 7 size: 193441 MB
node 7 free: 189924 MB
node distances:
node  0  1  2  3  4  5  6  7
  0:  10 12 12 12 32 32 32 32
  1:  12 10 12 12 32 32 32 32
  2:  12 12 10 12 32 32 32 32
  3:  12 12 12 10 32 32 32 32
  4:  32 32 32 32 10 12 12 12
  5:  32 32 32 32 12 10 12 12
  6:  32 32 32 32 12 12 10 12
  7:  32 32 32 32 12 12 12 10

```

```

-----
9. /proc/meminfo
   MemTotal:      1584078168 kB

```

```

-----
10. who -r
    run-level 3 Feb 5 15:57

```

```

-----
11. Systemd service manager version: systemd 255 (255.4-lubuntu8.6)
    Default Target  Status
    multi-user      running

```

(Continued on next page)



SPEC CPU®2026 Floating Point Rate Result

Copyright 2026 Standard Performance Evaluation Corporation

Dell Inc.

SPECrate®2026_fp_base = 993

PowerEdge R7725 (AMD EPYC 9965 192-Core Processor)

SPECrate®2026_fp_peak = 993

CPU2026 License: 6573

Test Sponsor: Dell Inc.

Tested by: Dell Inc.

Test Date: Feb-2026

Hardware Availability: Mar-2025

Software Availability: Jan-2026

Platform Notes (Continued)

12. Services, from systemctl list-unit-files

```

STATE          UNIT FILES
enabled        apparmor apport blk-availability cloud-config cloud-final cloud-init cloud-init-local
                console-setup e2scrub_reap finalrd getty@ gpu-manager grub-common grub-initrd-fallback
                keyboard-setup lm-sensors lvm2-monitor multipathd networkd-dispatcher
                nvmeofc-boot-connections nvmeofc-autoconnect open-iscsi pollinate secureboot-db setvtrgb
                systemd-networkd systemd-networkd-wait-online systemd-pstore systemd-resolved
                systemd-timesyncd thermald tuned
enabled-runtime netplan-ovs-cleanup systemd-fsck-root systemd-remount-fs
disabled        console-getty debug-shell fio iscsid serial-getty@ ssh systemd-boot-check-no-failures
                systemd-confext systemd-network-generator systemd-networkd-wait-online@
                systemd-pcrlock-file-system systemd-pcrlock-firmware-code systemd-pcrlock-firmware-config
                systemd-pcrlock-machine-id systemd-pcrlock-make-policy
                systemd-pcrlock-secureboot-authority systemd-pcrlock-secureboot-policy systemd-sysext
                systemd-time-wait-sync upower
indirect        systemd-sysupdate systemd-sysupdate-reboot uidd
masked         cryptdisks cryptdisks-early hwclock multipath-tools-boot sudo x11-common

```

13. Linux kernel boot-time arguments, from /proc/cmdline

```

BOOT_IMAGE=/boot/vmlinuz-6.8.0-55-generic
root=UUID=12012b0a-8b6b-4db0-98ad-44c145a96bdb
ro

```

14. cpupower frequency-info

```

analyzing CPU 757:
  current policy: frequency should be within 1.50 GHz and 2.25 GHz.
                  The governor "performance" may decide which speed to use
                  within this range.

  boost state support:
    Supported: yes
    Active: yes
    Boost States: 0
    Total States: 3
    Pstate-P0: 2250MHz

```

15. tuned-adm active

Current active profile: latency-performance

16. sysctl

```

kernel.numa_balancing          1
kernel.randomize_va_space      0

```

(Continued on next page)



SPEC CPU®2026 Floating Point Rate Result

Copyright 2026 Standard Performance Evaluation Corporation

Dell Inc.

SPECrate®2026_fp_base = 993

PowerEdge R7725 (AMD EPYC 9965 192-Core Processor)

SPECrate®2026_fp_peak = 993

CPU2026 License: 6573

Test Sponsor: Dell Inc.

Tested by: Dell Inc.

Test Date: Feb-2026

Hardware Availability: Mar-2025

Software Availability: Jan-2026

Platform Notes (Continued)

```

vm.compaction_proactiveness      20
vm.dirty_background_bytes        0
vm.dirty_background_ratio        3
vm.dirty_bytes                   0
vm.dirty_expire_centisecs        3000
vm.dirty_ratio                   8
vm.dirty_writeback_centisecs     500
vm.dirtytime_expire_seconds      43200
vm.extfrag_threshold             500
vm.min_unmapped_ratio            1
vm.nr_hugepages                  0
vm.nr_hugepages_mempolicy        0
vm.nr_overcommit_hugepages       0
vm.swappiness                     1
vm.watermark_boost_factor        15000
vm.watermark_scale_factor        10
vm.zone_reclaim_mode             1

```

```

-----
17. /sys/kernel/mm/transparent_hugepage
defrag          [always] defer defer+madvise madvise never
enabled        [always] madvise never
hpage_pmd_size 2097152
shmem_enabled  always within_size advise [never] deny force

```

```

-----
18. /sys/kernel/mm/transparent_hugepage/khugepaged
alloc_sleep_millisecs  60000
defrag                  1
max_ptes_none          511
max_ptes_shared        256
max_ptes_swap          64
pages_to_scan          4096
scan_sleep_millisecs   10000

```

```

-----
19. OS release
From /etc/*-release /etc/*-version
os-release Ubuntu 24.04.2 LTS

```

```

-----
20. Disk information
SPEC is set to: /mnt/ramdisk/cpu2026rc2
Filesystem      Type      Size  Used Avail Use% Mounted on
tmpfs           tmpfs    350G   10G  341G   3% /mnt/ramdisk

```

(Continued on next page)



SPEC CPU®2026 Floating Point Rate Result

Copyright 2026 Standard Performance Evaluation Corporation

Dell Inc.

SPECrate®2026_fp_base = 993

PowerEdge R7725 (AMD EPYC 9965 192-Core Processor)

SPECrate®2026_fp_peak = 993

CPU2026 License: 6573
Test Sponsor: Dell Inc.
Tested by: Dell Inc.

Test Date: Feb-2026
Hardware Availability: Mar-2025
Software Availability: Jan-2026

Platform Notes (Continued)

```
21. /sys/devices/virtual/dmi/id
Vendor:      Dell Inc.
Product:     PowerEdge R7725
Product Family: PowerEdge
Serial:      SLR7753
```

22. dmidecode

Additional information from dmidecode 3.5 follows. WARNING: Use caution when you interpret this section. The 'dmidecode' program reads system data which is "intended to allow hardware to be accurately determined", but the intent may not be met, as there are frequent changes to hardware, firmware, and the "DMTF SMBIOS" standard.

Memory:

```
23x 80AD000080AD HMC94AHBRA277N 64 GB 2 rank 6400
1x 80AD000080AD HMC94AHBRA480N 64 GB 2 rank 6400
```

23. BIOS

(This section combines info from /sys/devices and dmidecode.)

```
BIOS Vendor:      Dell Inc.
BIOS Version:     1.5.3
BIOS Date:        10/29/2025
BIOS Revision:    1.5
```

Compiler Version Notes

```
=====  
C      | 782.lbm_r(base)
```

```
-----  
AMD clang version 17.0.6 (CLANG: AOCC_5.1.0-Build#1994 2025_12_23)  
Target: x86_64-unknown-linux-gnu  
Thread model: posix  
InstalledDir: /opt/AMD/aocc/aocc-compiler-5.1.0/bin  
-----
```

```
=====  
C++    | 731.astcenc_r(base) 736.ocio_r(base) 748.flightdm_r(base)  
      | 766.femflow_r(base) 767.nest_r(base) 772.marian_r(base)
```

```
-----  
AMD clang version 17.0.6 (CLANG: AOCC_5.1.0-Build#1994 2025_12_23)  
Target: x86_64-unknown-linux-gnu  
Thread model: posix  
InstalledDir: /opt/AMD/aocc/aocc-compiler-5.1.0/bin  
-----
```

(Continued on next page)



SPEC CPU®2026 Floating Point Rate Result

Copyright 2026 Standard Performance Evaluation Corporation

Dell Inc.

SPECrate®2026_fp_base = 993

PowerEdge R7725 (AMD EPYC 9965 192-Core Processor)

SPECrate®2026_fp_peak = 993

CPU2026 License: 6573

Test Sponsor: Dell Inc.

Tested by: Dell Inc.

Test Date: Feb-2026

Hardware Availability: Mar-2025

Software Availability: Jan-2026

Compiler Version Notes (Continued)

=====
C++, C | 709.cactus_r(base) 737.gmsh_r(base)

AMD clang version 17.0.6 (CLANG: AOCC_5.1.0-Build#1994 2025_12_23)
Target: x86_64-unknown-linux-gnu
Thread model: posix
InstalledDir: /opt/AMD/aocc/aocc-compiler-5.1.0/bin

=====
Fortran | 722.palm_r(base) 749.fotonik3d_r(base) 765.roms_r(base)

AMD clang version 17.0.6 (CLANG: AOCC_5.1.0-Build#1994 2025_12_23)
Target: x86_64-unknown-linux-gnu
Thread model: posix
InstalledDir: /opt/AMD/aocc/aocc-compiler-5.1.0/bin

Base Compiler Invocation

C benchmarks:

clang

C++ benchmarks:

clang++

Fortran benchmarks:

flang

Benchmarks using both C and C++:

clang++ clang

Base Portability Flags

709.cactus_r: -DSPEC_LP64
722.palm_r: -DSPEC_LP64
731.astcenc_r: -DSPEC_LP64
736.ocio_r: -fno-finite-math-only -DSPEC_LP64
737.gmsh_r: -fno-fast-math -DSPEC_LP64
748.flightdm_r: -fno-reciprocal-math -DSPEC_LP64
749.fotonik3d_r: -DSPEC_LP64
765.roms_r: -DSPEC_LP64
766.femflow_r: -DSPEC_LP64

(Continued on next page)



SPEC CPU®2026 Floating Point Rate Result

Copyright 2026 Standard Performance Evaluation Corporation

Dell Inc.

SPECrate®2026_fp_base = 993

PowerEdge R7725 (AMD EPYC 9965 192-Core Processor)

SPECrate®2026_fp_peak = 993

CPU2026 License: 6573

Test Date: Feb-2026

Test Sponsor: Dell Inc.

Hardware Availability: Mar-2025

Tested by: Dell Inc.

Software Availability: Jan-2026

Base Portability Flags (Continued)

767.nest_r: -fno-finite-math-only -DSPEC_LP64

772.marian_r: -DSPEC_LP64

782.lbm_r: -DSPEC_LP64

Base Optimization Flags

C benchmarks:

```
-m64 -std=c18 -Wl,-mllvm -Wl,-align-all-nofallthru-blocks=6
-Wl,-mllvm -Wl,-reduce-array-computations=3
-Wl,-mllvm -Wl,-ldist-scalar-expand -fenable-aggressive-gather
-ffast-math -O3 -march=znver5 -fveclib=AMDLIBM -fno-PIE -no-pie
-flto -fstruct-layout=7 -mllvm -unroll-threshold=50
-mllvm -inline-threshold=1000 -fremap-arrays -fstrip-mining
-mllvm -reduce-array-computations=3 -zopt -lamdlibm -lamdalloc
-lflang
```

C++ benchmarks:

```
-m64 -std=c++17 -Wl,-mllvm -Wl,-align-all-nofallthru-blocks=6
-Wl,-mllvm -Wl,-reduce-array-computations=3
-Wl,-mllvm -Wl,-x86-use-vzeroupper=false -Wl,-mllvm -Wl,-extra-inliner
-ffast-math -O3 -march=znver5 -fveclib=AMDLIBM -flto
-mllvm -unroll-threshold=100 -mllvm -loop-unswitch-threshold=200000
-mllvm -reduce-array-computations=3 -zopt -lamdlibm -lamdalloc
-lflang
```

Fortran benchmarks:

```
-m64 -Mstandard -Wl,-mllvm -Wl,-align-all-nofallthru-blocks=6
-Wl,-mllvm -Wl,-reduce-array-computations=3
-Wl,-mllvm -Wl,-enable-X86-prefetching
-Wl,-mllvm -Wl,-enable-aggressive-gather=true
-Wl,-mllvm -Wl,-enable-masked-gather-sequence=false -ffast-math -O3
-march=znver5 -fveclib=AMDLIBM -flto -Mrecursive -funroll-loops
-mllvm -lsr-in-nested-loop -mllvm -reduce-array-computations=3
-fepilog-vectorization-of-inductions -zopt -lamdlibm -lamdalloc
-lflang
```

Benchmarks using both C and C++:

```
-m64 -std=c++17 -std=c18 -Wl,-mllvm -Wl,-align-all-nofallthru-blocks=6
-Wl,-mllvm -Wl,-reduce-array-computations=3
-Wl,-mllvm -Wl,-x86-use-vzeroupper=false -Wl,-mllvm -Wl,-extra-inliner
-ffast-math -O3 -march=znver5 -fveclib=AMDLIBM -fno-PIE -no-pie
-flto -fstruct-layout=7 -mllvm -unroll-threshold=50
-mllvm -inline-threshold=1000 -fremap-arrays -fstrip-mining
-mllvm -reduce-array-computations=3 -zopt -mllvm -unroll-threshold=100
```

(Continued on next page)



SPEC CPU®2026 Floating Point Rate Result

Copyright 2026 Standard Performance Evaluation Corporation

Dell Inc.

SPECrate®2026_fp_base = 993

PowerEdge R7725 (AMD EPYC 9965 192-Core Processor)

SPECrate®2026_fp_peak = 993

CPU2026 License: 6573

Test Date: Feb-2026

Test Sponsor: Dell Inc.

Hardware Availability: Mar-2025

Tested by: Dell Inc.

Software Availability: Jan-2026

Base Optimization Flags (Continued)

Benchmarks using both C and C++ (continued):

-mllvm -loop-unswitch-threshold=200000 -lamdlibm -lamdalloc -lflang

Peak Optimization Flags

C benchmarks:

782.lbm_r: basepeak = yes

C++ benchmarks:

731.astcenc_r: basepeak = yes

736.ocio_r: basepeak = yes

748.flightdm_r: basepeak = yes

766.femflow_r: basepeak = yes

767.nest_r: basepeak = yes

772.marian_r: basepeak = yes

Fortran benchmarks:

722.palm_r: basepeak = yes

749.fotonik3d_r: basepeak = yes

765.roms_r: basepeak = yes

Benchmarks using both C and C++:

709.cactus_r: basepeak = yes

737.gmsh_r: basepeak = yes

The flags files that were used to format this result can be browsed at

<http://www.spec.org/cpu2026/results/flags/aocc-flags.2026-05-04.html>

<http://www.spec.org/cpu2026/results/flags/Dell-Platform-Flags-PowerEdge-AMD-EPYC-v1.8.html>



SPEC CPU®2026 Floating Point Rate Result

Copyright 2026 Standard Performance Evaluation Corporation

Dell Inc.

SPECrate®2026_fp_base = 993

PowerEdge R7725 (AMD EPYC 9965 192-Core Processor)

SPECrate®2026_fp_peak = 993

CPU2026 License: 6573

Test Sponsor: Dell Inc.

Tested by: Dell Inc.

Test Date: Feb-2026

Hardware Availability: Mar-2025

Software Availability: Jan-2026

You can also download the XML flags sources by saving the following links:

<http://www.spec.org/cpu2026/results/flags/aocc-flags.2026-05-04.xml>

<http://www.spec.org/cpu2026/results/flags/Dell-Platform-Flags-PowerEdge-AMD-EPYC-v1.8.xml>

SPEC CPU and SPECrate are registered trademarks of the Standard Performance Evaluation Corporation. All other brand and product names appearing in this result are trademarks or registered trademarks of their respective holders.

For questions about this result, please contact the tester. For other inquiries, please contact info@spec.org.

Tested with SPEC CPU®2026 v0.902.0 on 2026-02-05 14:14:16-0500.

Report generated on 2026-05-11 16:38:04 by CPU2026 PDF formatter (unknown).

Originally published on 2026-05-05.