



SPEC CPU®2026 Floating Point Rate Result

Copyright 2026 Standard Performance Evaluation Corporation

Dell Inc.

SPECrate®2026_fp_base = 285

PowerEdge XR8720t (Intel Xeon 6776P-B)

SPECrate®2026_fp_peak = 293

CPU2026 License: 6573

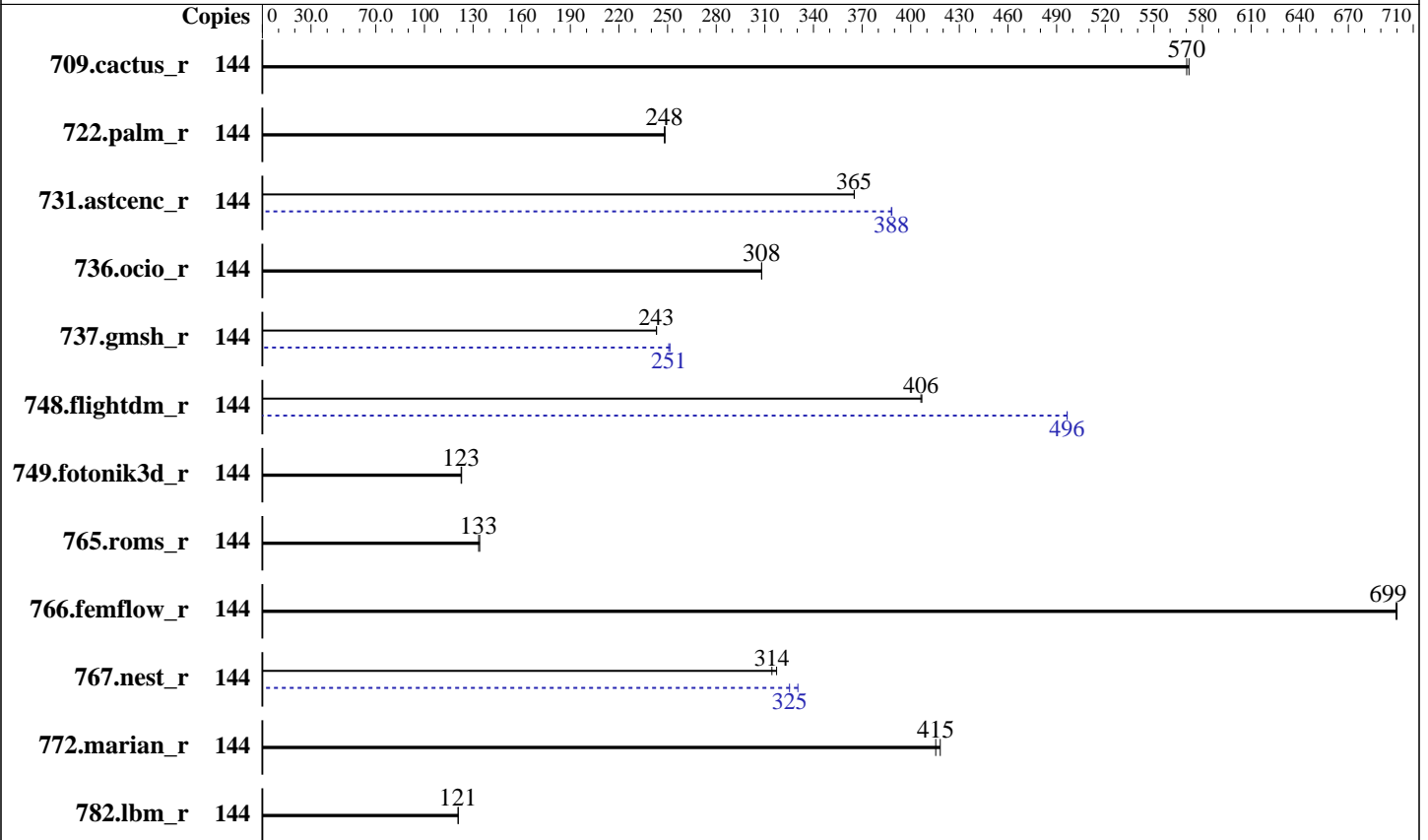
Test Date: Feb-2026

Test Sponsor: Dell Inc.

Hardware Availability: Mar-2026

Tested by: Dell Inc.

Software Availability: Nov-2025



Hardware

CPU Name: Intel Xeon 6776P-B
 Max MHz: 3500
 Nominal: 2300
 Enabled: 72 cores, 1 chip, 2 threads/core
 Orderable: 1 chip
 Cache L1: 64 KB I + 48 KB D on chip per core
 L2: 2 MB I+D on chip per core
 L3: 288 MB I+D on chip per chip
 Other: None
 Memory: 512 GB (8 x 64 GB 2Rx4 PC5-6400B-R)
 Storage: 110 GB on tmpfs
 Cooling: Air
 Other: None

Software

OS: Red Hat Enterprise Linux 10.0 (Coughlan)
 6.12.0-55.9.1.el10_0.x86_64
 Compiler: C/C++: Version 2025.3 of Intel oneAPI DPC++/C++
 Compiler for Linux;
 Fortran: Version 2025.3 of Intel Fortran
 Compiler for Linux
 Compiler Category: Vendor
 Firmware: Version 1.1.3 released Feb-2026
 File System: tmpfs
 System State: Run level 3 (multi-user)
 Base Pointers: 64-bit
 Peak Pointers: 64-bit
 Other: jemalloc memory allocator v5.3
 Power Management: BIOS set to prefer performance at the cost of
 additional power usage.



SPEC CPU®2026 Floating Point Rate Result

Copyright 2026 Standard Performance Evaluation Corporation

Dell Inc.

SPECrate®2026_fp_base = 285

PowerEdge XR8720t (Intel Xeon 6776P-B)

SPECrate®2026_fp_peak = 293

CPU2026 License: 6573
Test Sponsor: Dell Inc.
Tested by: Dell Inc.

Test Date: Feb-2026
Hardware Availability: Mar-2026
Software Availability: Nov-2025

Results Table

Benchmark	Base							Peak						
	Copies	Seconds	Ratio	Seconds	Ratio	Seconds	Ratio	Copies	Seconds	Ratio	Seconds	Ratio	Seconds	Ratio
709.cactus_r	144	216	572	<u>217</u>	<u>570</u>			144	216	572	<u>217</u>	<u>570</u>		
722.palm_r	144	765	248	<u>766</u>	<u>248</u>			144	765	248	<u>766</u>	<u>248</u>		
731.ascenc_r	144	331	365	<u>331</u>	<u>365</u>			144	<u>312</u>	<u>388</u>	311	388		
736.ocio_r	144	409	308	<u>409</u>	<u>308</u>			144	409	308	<u>409</u>	<u>308</u>		
737.gmsh_r	144	<u>272</u>	<u>243</u>	272	243			144	263	251	<u>264</u>	<u>251</u>		
748.flightdm_r	144	253	407	<u>254</u>	<u>406</u>			144	<u>208</u>	<u>496</u>	208	496		
749.fotonik3d_r	144	<u>1358</u>	<u>123</u>	1354	123			144	<u>1358</u>	<u>123</u>	1354	123		
765.roms_r	144	<u>1700</u>	<u>133</u>	1691	134			144	<u>1700</u>	<u>133</u>	1691	134		
766.femflow_r	144	302	700	<u>302</u>	<u>699</u>			144	302	700	<u>302</u>	<u>699</u>		
767.nest_r	144	360	317	<u>363</u>	<u>314</u>			144	346	330	<u>351</u>	<u>325</u>		
772.marian_r	144	<u>547</u>	<u>415</u>	544	418			144	<u>547</u>	<u>415</u>	544	418		
782.lbm_r	144	<u>683</u>	<u>121</u>	683	121			144	<u>683</u>	<u>121</u>	683	121		

SPECrate®2026_fp_base = **285**

SPECrate®2026_fp_peak = **293**

Results appear in the order in which they were run. Bold underlined text indicates a median measurement.

Submit Notes

The numactl mechanism was used to bind copies to processors. The config file option 'submit' was used to generate numactl commands to bind each copy to a specific processor. For details, please see the config file.

Operating System Notes

Stack size set to unlimited using "ulimit -s unlimited"

Environment Variables Notes

Environment variables set by runcpu before the start of the run:
LD_LIBRARY_PATH = "/mnt/ramdisk/cpu2026-0.902.0-ic2025p3/lib"
MALLOC_CONF = "retain:true"

General Notes

Binaries compiled on a system with 2x Intel Xeon Platinum 8280M CPU + 384GB RAM memory using CentOS Stream 9.
Transparent Huge Pages enabled by default
Prior to runcpu invocation
Filesystem page cache synced and cleared with:
sync; echo 3> /proc/sys/vm/drop_caches

(Continued on next page)



SPEC CPU®2026 Floating Point Rate Result

Copyright 2026 Standard Performance Evaluation Corporation

Dell Inc.

SPECrate®2026_fp_base = 285

PowerEdge XR8720t (Intel Xeon 6776P-B)

SPECrate®2026_fp_peak = 293

CPU2026 License: 6573

Test Sponsor: Dell Inc.

Tested by: Dell Inc.

Test Date: Feb-2026

Hardware Availability: Mar-2026

Software Availability: Nov-2025

General Notes (Continued)

```

runcpu command invoked through numactl i.e.:
numactl --interleave=all runcpu <etc>
jemalloc, a general purpose malloc implementation
built with the CentOS Stream 9, and the system compiler gcc 11.5.0
sources available from jemalloc.net or https://github.com/jemalloc/jemalloc/releases
Benchmark run from a 110 GB ramdisk created with the cmd: "mount -t tmpfs -o size=110G tmpfs /mnt/ramdisk"

```

Platform Notes

BIOS Settings:

Sub NUMA Cluster : Enabled

AMP Prefetch : Enabled

Optimizer Mode : Enabled

System Profile : Custom

Latency Optimized Mode : Enabled

Memory Paging Policy : Closed Paging

Sysinfo program /mnt/ramdisk/cpu2026-0.902.0-ic2025p3/bin/sysinfo

Rev: 069f95da7e7f5d81b2ce48a82150e54f

running on P404206-XR8720t Fri Feb 6 04:12:50 2026

SUT (System Under Test) info as seen by some common utilities.

Table of contents

1. uname -srvm
2. w
3. Username
4. ulimit -a
5. sysinfo process ancestry
6. /proc/cpuinfo
7. lscpu
8. numactl --hardware
9. /proc/meminfo
10. who -r
11. Systemd service manager version: systemd 257 (257-9.el10_0.1-g8cd5633)
12. Services, from systemctl list-unit-files
13. Linux kernel boot-time arguments, from /proc/cmdline
14. cpupower frequency-info
15. tuned-adm active
16. sysctl
17. /sys/kernel/mm/transparent_hugepage
18. /sys/kernel/mm/transparent_hugepage/khugepaged

(Continued on next page)



SPEC CPU®2026 Floating Point Rate Result

Copyright 2026 Standard Performance Evaluation Corporation

Dell Inc.

SPECrate®2026_fp_base = 285

PowerEdge XR8720t (Intel Xeon 6776P-B)

SPECrate®2026_fp_peak = 293

CPU2026 License: 6573
Test Sponsor: Dell Inc.
Tested by: Dell Inc.

Test Date: Feb-2026
Hardware Availability: Mar-2026
Software Availability: Nov-2025

Platform Notes (Continued)

- 19. OS release
- 20. Disk information
- 21. /sys/devices/virtual/dmi/id
- 22. dmidecode
- 23. BIOS

```
1. uname -srvm
Linux 6.12.0-55.9.1.el10_0.x86_64 #1 SMP PREEMPT_DYNAMIC Tue Mar 25 09:14:09 EDT 2025 x86_64
```

```
2. w
04:12:50 up 5:17, 2 users, load average: 72.12, 124.75, 135.40
USER      TTY      LOGIN@   IDLE   JCPU   PCPU WHAT
root     tty1      22:56    5:01m  3.22s  0.02s /bin/bash /home/DellFiles/bin/Intel/dell-run-speccpu.sh
rate --define DL-VERS=7.0_T03 --output_format html,pdf,txt
root     22:56    5:00m   0.00s  0.27s /usr/lib/systemd/systemd --user
```

```
3. Username
From environment variable $USER: root
```

```
4. ulimit -a
real-time non-blocking time (microseconds, -R) unlimited
core file size              (blocks, -c) 0
data seg size                (kbytes, -d) unlimited
scheduling priority         (-e) 0
file size                    (blocks, -f) unlimited
pending signals              (-i) 2059607
max locked memory            (kbytes, -l) 8192
max memory size              (kbytes, -m) unlimited
open files                   (-n) 1024
pipe size                    (512 bytes, -p) 8
POSIX message queues         (bytes, -q) 819200
real-time priority           (-r) 0
stack size                   (kbytes, -s) unlimited
cpu time                     (seconds, -t) unlimited
max user processes           (-u) 2059607
virtual memory               (kbytes, -v) unlimited
file locks                   (-x) unlimited
```

```
5. sysinfo process ancestry
/usr/lib/systemd/systemd --switched-root --system --deserialize=47 rhgb
login -- root
```

(Continued on next page)



SPEC CPU®2026 Floating Point Rate Result

Copyright 2026 Standard Performance Evaluation Corporation

Dell Inc.

SPECrate®2026_fp_base = 285

PowerEdge XR8720t (Intel Xeon 6776P-B)

SPECrate®2026_fp_peak = 293

CPU2026 License: 6573
Test Sponsor: Dell Inc.
Tested by: Dell Inc.

Test Date: Feb-2026
Hardware Availability: Mar-2026
Software Availability: Nov-2025

Platform Notes (Continued)

```

-bash
/bin/bash /home/DellFiles/bin/DELL_rate.sh
/bin/bash /home/DellFiles/bin/dell-run-main.sh rate
/bin/bash /home/DellFiles/bin/dell-run-main.sh rate
/bin/bash /home/DellFiles/bin/Intel/dell-run-speccpu.sh rate --define DL-VERS=7.0_T03 --output_format
html,pdf,txt
/bin/bash /home/DellFiles/bin/Intel/dell-run-speccpu.sh rate --define DL-VERS=7.0_T03 --output_format
html,pdf,txt
runcpu --nobuild --reportable --action validate --define default-platform-flags --copies 144 -c
ic2025.3-graniterapids-cpu2026-0.902-rate-20260121.cfg --define smt-on --define cores=72 --define
physicalfirst --define invoke_with_interleave --define drop_caches --tune base,peak -o all --iterations 2
--define DL-VERS=7.0_T03 --output_format html,pdf,txt fprate
runcpu --nobuild --reportable --action validate --define default-platform-flags --copies 144 --configfile
ic2025.3-graniterapids-cpu2026-0.902-rate-20260121.cfg --define smt-on --define cores=72 --define
physicalfirst --define invoke_with_interleave --define drop_caches --tune base,peak --output_format all
--iterations 2 --define DL-VERS=7.0_T03 --output_format html,pdf,txt --nopower --runmode rate --tune
base:peak --size refrate fprate --nopreenv --note-preenv --logfile
$SPEC/tmp/CPU2026.002/templogs/preenv.fprate.002.0.log --lognum 002.0 --from_runcpu 2
specperl $SPEC/bin/sysinfo
$SPEC = /mnt/ramdisk/cpu2026-0.902.0-ic2025p3

```

```

-----
6. /proc/cpuinfo
   model name      : INTEL(R) XEON(R) 6776P-B
   vendor_id       : GenuineIntel
   cpu family      : 6
   model           : 174
   stepping        : 1
   microcode       : 0x1000303
   bugs            : spectre_v1 spectre_v2 spec_store_bypass swappgs bhi
   cpu cores       : 72
   siblings        : 144
   1 physical ids (chips)
   144 processors (hardware threads)
   physical id 0:  core ids 0-35,64-99
   physical id 0:  apicids 0-71,128-199

```

Caution: /proc/cpuinfo data regarding chips, cores, and threads is not necessarily reliable, especially for virtualized systems. Use the above data carefully.

7. lscpu

```

From lscpu from util-linux 2.40.2:
Architecture:      x86_64
CPU op-mode(s):    32-bit, 64-bit
Address sizes:      52 bits physical, 57 bits virtual
Byte Order:        Little Endian

```

(Continued on next page)



SPEC CPU®2026 Floating Point Rate Result

Copyright 2026 Standard Performance Evaluation Corporation

Dell Inc.

SPECrate®2026_fp_base = 285

PowerEdge XR8720t (Intel Xeon 6776P-B)

SPECrate®2026_fp_peak = 293

CPU2026 License: 6573
Test Sponsor: Dell Inc.
Tested by: Dell Inc.

Test Date: Feb-2026
Hardware Availability: Mar-2026
Software Availability: Nov-2025

Platform Notes (Continued)

```

CPU(s): 144
On-line CPU(s) list: 0-143
Vendor ID: GenuineIntel
BIOS Vendor ID: Intel
Model name: INTEL(R) XEON(R) 6776P-B
BIOS Model name: INTEL(R) XEON(R) 6776P-B CPU @ 2.3GHz
BIOS CPU family: 179
CPU family: 6
Model: 174
Thread(s) per core: 2
Core(s) per socket: 72
Socket(s): 1
Stepping: 1
BogoMIPS: 4600.00
Flags: fpu vme de pse tsc msr pae mce cx8 apic sep mtrr pge mca cmov pat
pse36 clflush dts acpi mmx fxsr sse sse2 ss ht tm pbe syscall nx
pdpelgb rdtscp lm constant_tsc art arch_perfmon pebs bts rep_good
nopl xtopology nonstop_tsc cpuid aperfperf tsc_known_freq pni
pclmulqdq dtes64 monitor ds_cpl vmx smx est tm2 ssse3 sdbg fma cx16
xtpr pdcm pcid dca sse4_1 sse4_2 x2apic movbe popcnt
tsc_deadline_timer aes xsave avx f16c rdrand lahf_lm abm
3dnowprefetch cpuid_fault epb cat_l3 cat_l2 cdp_l3 intel_ppin cdp_l2
ssbd mba ibrs ibpb stibp ibrs_enhanced tpr_shadow flexpriority ept
vpid ept_ad fsgsbase tsc_adjust bmi1 avx2 smep bmi2 erms invpcid cqm
rdt_a avx512f avx512dq rdseed adx smap avx512ifma clflushopt clwb
intel_pt avx512cd sha_ni avx512bw avx512vl xsaveopt xsavec xgetbv1
xsaves cqm_llc cqm_occup_llc cqm_mbm_total cqm_mbm_local
split_lock_detect user_shstk avx_vnni avx512_bf16 wbnoinvd dtherm ida
arat pln pts vnni avx512vbmi umip pku ospke waitpkg avx512_vbmi2 gfni
vaes vpclmulqdq avx512_vnni avx512_bitalg avx512_vpopcntdq la57 rdpid
bus_lock_detect cldemote movdiri movdir64b enqcmd fsrm md_clear
serialize tsxldtrk pconfig arch_lbr ibt amx_bf16 avx512_fp16 amx_tile
amx_int8 flush_lld arch_capabilities

Virtualization: VT-x
L1d cache: 3.4 MiB (72 instances)
L1i cache: 4.5 MiB (72 instances)
L2 cache: 144 MiB (72 instances)
L3 cache: 288 MiB (1 instance)
NUMA node(s): 2
NUMA node0 CPU(s): 0-35,72-107
NUMA node1 CPU(s): 36-71,108-143
Vulnerability Gather data sampling: Not affected
Vulnerability Itlb multihit: Not affected
Vulnerability L1tf: Not affected
Vulnerability Mds: Not affected
Vulnerability Meltdown: Not affected
Vulnerability Mmio stale data: Not affected

```

(Continued on next page)



SPEC CPU®2026 Floating Point Rate Result

Copyright 2026 Standard Performance Evaluation Corporation

Dell Inc.

SPECrate®2026_fp_base = 285

PowerEdge XR8720t (Intel Xeon 6776P-B)

SPECrate®2026_fp_peak = 293

CPU2026 License: 6573
Test Sponsor: Dell Inc.
Tested by: Dell Inc.

Test Date: Feb-2026
Hardware Availability: Mar-2026
Software Availability: Nov-2025

Platform Notes (Continued)

Vulnerability Reg file data sampling: Not affected
 Vulnerability Retbleed: Not affected
 Vulnerability Spec rstack overflow: Not affected
 Vulnerability Spec store bypass: Mitigation; Speculative Store Bypass disabled via prctl
 Vulnerability Spectre v1: Mitigation; usercopy/swaps barriers and __user pointer sanitization
 Vulnerability Spectre v2: Mitigation; Enhanced / Automatic IBRS; IBPB conditional; RSB filling;
 PBRSE-eIBRS Not affected; BHI BHI_DIS_S
 Vulnerability Srbds: Not affected
 Vulnerability Tsx async abort: Not affected

From lscpu --cache:

NAME	ONE-SIZE	ALL-SIZE	WAYS	TYPE	LEVEL	SETS	PHY-LINE	COHERENCY-SIZE
L1d	48K	3.4M	12	Data	1	64	1	64
L1i	64K	4.5M	16	Instruction	1	64	1	64
L2	2M	144M	16	Unified	2	2048	1	64
L3	288M	288M	16	Unified	3	294912	1	64

8. numactl --hardware

NOTE: a numactl 'node' might or might not correspond to a physical chip.

```
available: 2 nodes (0-1)
node 0 cpus: 0-35,72-107
node 0 size: 257111 MB
node 0 free: 227478 MB
node 1 cpus: 36-71,108-143
node 1 size: 258013 MB
node 1 free: 255569 MB
node distances:
node    0    1
  0:   10   12
  1:   12   10
```

9. /proc/meminfo

MemTotal: 527488488 kB

10. who -r

run-level 3 Feb 5 22:55

11. Systemd service manager version: systemd 257 (257-9.el10_0.1-g8cd5633)

```
Default Target Status
multi-user      running
```

12. Services, from systemctl list-unit-files

(Continued on next page)



SPEC CPU®2026 Floating Point Rate Result

Copyright 2026 Standard Performance Evaluation Corporation

Dell Inc.

SPECrate®2026_fp_base = 285

PowerEdge XR8720t (Intel Xeon 6776P-B)

SPECrate®2026_fp_peak = 293

CPU2026 License: 6573

Test Date: Feb-2026

Test Sponsor: Dell Inc.

Hardware Availability: Mar-2026

Tested by: Dell Inc.

Software Availability: Nov-2025

Platform Notes (Continued)

STATE	UNIT FILES
enabled	ModemManager NetworkManager NetworkManager-dispatcher NetworkManager-wait-online accounts-daemon atd audit-rules auditd avahi-daemon bluetooth chronyd crond cups dbus-broker fips-crypto-policy-overlay firewallld gdm getty@ insights-client-boot irqbalance iscsi-onboot iscsi-starter kdump libstoragemgmt lvm2-monitor mcelog mdmonitor multipathd nvmeofc-boot-connections qemu-guest-agent rhsmcertd rsyslog rtkit-daemon selinux-autorelabel-mark smartd sshd sssd switcheroo-control systemd-confext systemd-network-generator systemd-pstore systemd-sysextd tuned tuned-ppd udisks2 upower vgauthd vmttoolsd
enabled-runtime	systemd-remount-fs
disabled	arp-ethers blk-availability brltty canberra-system-bootup canberra-system-shutdown canberra-system-shutdown-reboot chrony-wait chronyd-restricted console-getty cups-browsed dbus-daemon debug-shell dnf-system-upgrade dnsmasq gnome-remote-desktop gnome-remote-desktop-configuration hypervfcopyd iscsi-init iscsid iscsiuiio kpatch kvm_stat ledmon low-memory-monitor lvm-devices-import man-db-restart-cache-update microcode netavark-dhcp-proxy netavark-firewallld-reload nftables nis-domainname nvme-autoconnect podman podman-auto-update podman-clean-transient podman-kube@ podman-restart psacct ras-mc-ctl rasdaemon rhsm rhsm-facts rpmdb-migrate rpmdb-rebuild selinux-check-proper-disable serial-getty@ speech-dispatcherd ssh-host-keys-migration sshd-keygen@ systemd-boot-check-no-failures systemd-boot-update systemd-PCRlock-file-system systemd-PCRlock-firmware-code systemd-PCRlock-firmware-config systemd-PCRlock-machine-id systemd-PCRlock-make-policy systemd-PCRlock-secureboot-authority systemd-PCRlock-secureboot-policy systemd-udev-load-credentials wpa_supplicant wsdd yggdrasil yggdrasil@
indirect	iscsi pcsd spice-vdagentd sshd@ sssd-autofs sssd-kcm sssd-nss sssd-pac sssd-pam sssd-ssh sssd-sudo systemd-sysupdate systemd-sysupdate-reboot systemd-userdbd

```
-----
13. Linux kernel boot-time arguments, from /proc/cmdline
BOOT_IMAGE=(hd0,gpt2)/vmlinuz-6.12.0-55.9.1.el10_0.x86_64
root=/dev/mapper/rhel-root
ro
crashkernel=2G-64G:256M,64G-:512M
resume=UUID=94aa4dd4-b04d-42c5-9ac2-da9c96f84f4e
rd.lvm.lv=rhel/root
rd.lvm.lv=rhel/swap
rhgb
quiet
-----
```

```
-----
14. cpupower frequency-info
analyzing CPU 12:
Unable to determine current policy
boost state support:
Supported: yes
Active: yes
-----
```

(Continued on next page)



SPEC CPU®2026 Floating Point Rate Result

Copyright 2026 Standard Performance Evaluation Corporation

Dell Inc.

SPECrate®2026_fp_base = 285

PowerEdge XR8720t (Intel Xeon 6776P-B)

SPECrate®2026_fp_peak = 293

CPU2026 License: 6573

Test Sponsor: Dell Inc.

Tested by: Dell Inc.

Test Date: Feb-2026

Hardware Availability: Mar-2026

Software Availability: Nov-2025

Platform Notes (Continued)

15. tuned-adm active
No current active profile.

16. sysctl
kernel.numa_balancing 1
kernel.randomize_va_space 2
vm.compaction_proactiveness 20
vm.dirty_background_bytes 0
vm.dirty_background_ratio 10
vm.dirty_bytes 0
vm.dirty_expire_centisecs 3000
vm.dirty_ratio 20
vm.dirty_writeback_centisecs 500
vm.dirtytime_expire_seconds 43200
vm.extfrag_threshold 500
vm.min_unmapped_ratio 1
vm.nr_hugepages 0
vm.nr_hugepages_mempolicy 0
vm.nr_overcommit_hugepages 0
vm.swappiness 60
vm.watermark_boost_factor 15000
vm.watermark_scale_factor 10
vm.zone_reclaim_mode 0

17. /sys/kernel/mm/transparent_hugepage
defrag always defer defer+madvice [madvice] never
enabled [always] madvice never
hpage_pmd_size 2097152
shmem_enabled always within_size advise [never] deny force

18. /sys/kernel/mm/transparent_hugepage/khugepaged
alloc_sleep_millisecs 60000
defrag 1
max_ptes_none 511
max_ptes_shared 256
max_ptes_swap 64
pages_to_scan 4096
scan_sleep_millisecs 10000

19. OS release
From /etc/*-release /etc/*-version
os-release Red Hat Enterprise Linux 10.0 (Coughlan)

(Continued on next page)



SPEC CPU®2026 Floating Point Rate Result

Copyright 2026 Standard Performance Evaluation Corporation

Dell Inc.

SPECrate®2026_fp_base = 285

PowerEdge XR8720t (Intel Xeon 6776P-B)

SPECrate®2026_fp_peak = 293

CPU2026 License: 6573
Test Sponsor: Dell Inc.
Tested by: Dell Inc.

Test Date: Feb-2026
Hardware Availability: Mar-2026
Software Availability: Nov-2025

Platform Notes (Continued)

redhat-release Red Hat Enterprise Linux release 10.0 (Coughlan)
system-release Red Hat Enterprise Linux release 10.0 (Coughlan)

20. Disk information

SPEC is set to: /mnt/ramdisk/cpu2026-0.902.0-ic2025p3
Filesystem Type Size Used Avail Use% Mounted on
tmpfs tmpfs 110G 13G 98G 12% /mnt/ramdisk

21. /sys/devices/virtual/dmi/id

Vendor: Dell Inc.
Product: PowerEdge XR8720t
Product Family: PowerEdge
Serial: P404206

22. dmidecode

Additional information from dmidecode 3.6 follows. WARNING: Use caution when you interpret this section. The 'dmidecode' program reads system data which is "intended to allow hardware to be accurately determined", but the intent may not be met, as there are frequent changes to hardware, firmware, and the "DMTF SMBIOS" standard.

Memory:
8x 00CE063200CE M321R8GA0PB2-CCPKC 64 GB 2 rank 6400

23. BIOS

(This section combines info from /sys/devices and dmidecode.)

BIOS Vendor: Dell Inc.
BIOS Version: 1.1.3
BIOS Date: 02/03/2026
BIOS Revision: 1.1

Compiler Version Notes

C | 782.lbm_r(base, peak)

Intel(R) oneAPI DPC++/C++ Compiler for applications running on Intel(R) 64,
Version 2025.3.0 Build 20251010
Copyright (C) 1985-2025 Intel Corporation. All rights reserved.

C++ | 731.astcenc_r(base, peak) 736.ocio_r(base, peak)

(Continued on next page)



SPEC CPU®2026 Floating Point Rate Result

Copyright 2026 Standard Performance Evaluation Corporation

Dell Inc.

SPECrate®2026_fp_base = 285

PowerEdge XR8720t (Intel Xeon 6776P-B)

SPECrate®2026_fp_peak = 293

CPU2026 License: 6573
Test Sponsor: Dell Inc.
Tested by: Dell Inc.

Test Date: Feb-2026
Hardware Availability: Mar-2026
Software Availability: Nov-2025

Compiler Version Notes (Continued)

| 748.flightdm_r(base, peak) 766.femflow_r(base, peak)
| 767.nest_r(base, peak) 772.marian_r(base, peak)

Intel(R) oneAPI DPC++/C++ Compiler for applications running on Intel(R) 64,
Version 2025.3.0 Build 20251010
Copyright (C) 1985-2025 Intel Corporation. All rights reserved.

=====
C++, C | 709.cactus_r(base, peak) 737.gmsh_r(base, peak)

Intel(R) oneAPI DPC++/C++ Compiler for applications running on Intel(R) 64,
Version 2025.3.0 Build 20251010
Copyright (C) 1985-2025 Intel Corporation. All rights reserved.

=====
Fortran | 722.palm_r(base, peak) 749.fotonik3d_r(base, peak) 765.roms_r(base,
peak)

Intel(R) Fortran Compiler for applications running on Intel(R) 64, Version
2025.3.0 Build 20251010
Copyright (C) 1985-2025 Intel Corporation. All rights reserved.

Base Compiler Invocation

C benchmarks:
icx

C++ benchmarks:
icpx

Fortran benchmarks:
ifx

Benchmarks using both C and C++:
icpx icx

Base Portability Flags

709.cactus_r: -DSPEC_LP64
722.palm_r: -DSPEC_LP64

(Continued on next page)



SPEC CPU®2026 Floating Point Rate Result

Copyright 2026 Standard Performance Evaluation Corporation

Dell Inc.

SPECrate®2026_fp_base = 285

PowerEdge XR8720t (Intel Xeon 6776P-B)

SPECrate®2026_fp_peak = 293

CPU2026 License: 6573

Test Sponsor: Dell Inc.

Tested by: Dell Inc.

Test Date: Feb-2026

Hardware Availability: Mar-2026

Software Availability: Nov-2025

Base Portability Flags (Continued)

```

731.astcenc_r: -DSPEC_LP64
736.ocio_r: -DSPEC_LP64
737.gmsh_r: -DSPEC_LP64 -fno-associative-math
748.flightdm_r: -DSPEC_LP64
749.fotonik3d_r: -DSPEC_LP64
765.roms_r: -DSPEC_LP64
766.femflow_r: -DSPEC_LP64
767.nest_r: -DSPEC_LP64
772.marian_r: -DSPEC_LP64
782.lbm_r: -DSPEC_LP64

```

Base Optimization Flags

C benchmarks:

```

-m64 -std=c18 -Wl,-z,muldefs -xgraniterapids
-mprefer-vector-width=512 -O3 -ffp-model=fast -flto -mfpmath=sse
-funroll-loops -qopt-mem-layout-trans=4 -L/usr/local/jemalloc-5.3.0/lib
-ljemalloc

```

C++ benchmarks:

```

-m64 -std=c++17 -Wl,-z,muldefs -xgraniterapids
-mprefer-vector-width=512 -O3 -ffp-model=fast -flto -mfpmath=sse
-funroll-loops -qopt-mem-layout-trans=4 -L/usr/local/jemalloc-5.3.0/lib
-ljemalloc

```

Fortran benchmarks:

```

-m64 -stand f18 -Wl,-z,muldefs -xgraniterapids
-mprefer-vector-width=512 -O3 -ffp-model=fast -flto -mfpmath=sse
-funroll-loops -qopt-mem-layout-trans=4 -nostandard-realloc-lhs
-align array32byte -auto -L/usr/local/jemalloc-5.3.0/lib -ljemalloc

```

Benchmarks using both C and C++:

```

-m64 -std=c++17 -std=c18 -Wl,-z,muldefs -xgraniterapids
-mprefer-vector-width=512 -O3 -ffp-model=fast -flto -mfpmath=sse
-funroll-loops -qopt-mem-layout-trans=4 -L/usr/local/jemalloc-5.3.0/lib
-ljemalloc

```

Peak Compiler Invocation

C benchmarks:

icx

(Continued on next page)



SPEC CPU®2026 Floating Point Rate Result

Copyright 2026 Standard Performance Evaluation Corporation

Dell Inc.

SPECrate®2026_fp_base = 285

PowerEdge XR8720t (Intel Xeon 6776P-B)

SPECrate®2026_fp_peak = 293

CPU2026 License: 6573

Test Sponsor: Dell Inc.

Tested by: Dell Inc.

Test Date: Feb-2026

Hardware Availability: Mar-2026

Software Availability: Nov-2025

Peak Compiler Invocation (Continued)

C++ benchmarks:

icpx

Fortran benchmarks:

ifx

Benchmarks using both C and C++:

icpx icx

Peak Portability Flags

Same as Base Portability Flags

Peak Optimization Flags

C benchmarks:

782.lbm_r: basepeak = yes

C++ benchmarks:

```
731.astcenc_r: -m64 -std=c++17 -Wl,-z,muldefs -fprofile-generate(pass 1)
-fprofile-use=default.profddata(pass 2) -xHost(pass 1)
-ffp-model=fast -xgraniterapids(pass 2) -flt0
-mprefer-vector-width=512 -qopt-mem-layout-trans=4 -O3
-mfpmath=sse -funroll-loops
-L/usr/local/jemalloc-5.3.0/lib -ljemalloc
```

736.ocio_r: basepeak = yes

748.flightdm_r: Same as 731.astcenc_r

766.femflow_r: basepeak = yes

767.nest_r: Same as 731.astcenc_r

772.marian_r: basepeak = yes

Fortran benchmarks:

722.palm_r: basepeak = yes

(Continued on next page)



SPEC CPU®2026 Floating Point Rate Result

Copyright 2026 Standard Performance Evaluation Corporation

Dell Inc.

SPECrate®2026_fp_base = 285

PowerEdge XR8720t (Intel Xeon 6776P-B)

SPECrate®2026_fp_peak = 293

CPU2026 License: 6573

Test Sponsor: Dell Inc.

Tested by: Dell Inc.

Test Date: Feb-2026

Hardware Availability: Mar-2026

Software Availability: Nov-2025

Peak Optimization Flags (Continued)

749.fotonik3d_r: basepeak = yes

765.roms_r: basepeak = yes

Benchmarks using both C and C++:

709.cactus_r: basepeak = yes

```
737.gmsh_r: -m64 -std=c++17 -std=c18 -Wl,-z,muldefs
-fprofile-generate(pass 1)
-fprofile-use=default.profddata(pass 2) -xHost(pass 1)
-ffp-model=fast -xgraniterapids(pass 2) -flto
-mprefer-vector-width=512 -qopt-mem-layout-trans=4 -O3
-mfpmath=sse -funroll-loops
-L/usr/local/jemalloc-5.3.0/lib -ljemalloc
```

The flags files that were used to format this result can be browsed at

<http://www.spec.org/cpu2026/results/flags/Intel-ic2025-official-linux64-cpu2026-0.902.html>

<http://www.spec.org/cpu2026/results/flags/Dell-Platform-Flags-PowerEdge-Intel-Xeon-v1.19.html>

You can also download the XML flags sources by saving the following links:

<http://www.spec.org/cpu2026/results/flags/Intel-ic2025-official-linux64-cpu2026-0.902.xml>

<http://www.spec.org/cpu2026/results/flags/Dell-Platform-Flags-PowerEdge-Intel-Xeon-v1.19.xml>

SPEC CPU and SPECrate are registered trademarks of the Standard Performance Evaluation Corporation. All other brand and product names appearing in this result are trademarks or registered trademarks of their respective holders.

For questions about this result, please contact the tester. For other inquiries, please contact info@spec.org.

Tested with SPEC CPU®2026 v0.902.0 on 2026-02-06 05:12:49-0500.

Report generated on 2026-05-11 16:38:18 by CPU2026 PDF formatter (unknown).

Originally published on 2026-05-05.