



SPEC CPU®2026 Floating Point Rate Result

Copyright 2026 Standard Performance Evaluation Corporation

Hewlett Packard Enterprise

(Test Sponsor: HPE)

ProLiant Compute DL380 Gen12
(2.00 GHz, Intel Xeon 6787P)

SPECrate®2026_fp_base = 637

SPECrate®2026_fp_peak = 637

CPU2026 License: 3

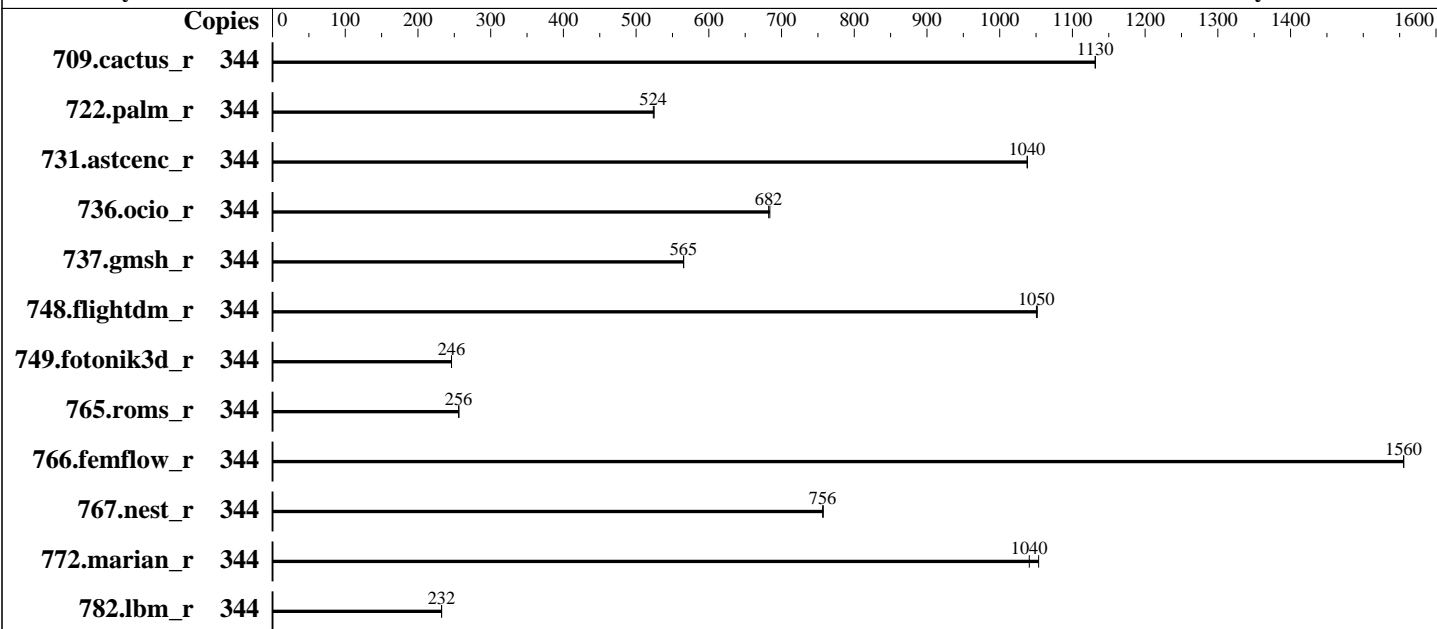
Test Sponsor: HPE

Tested by: HPE

Test Date: Feb-2026

Hardware Availability: Mar-2025

Software Availability: Jan-2026



Hardware

CPU Name: Intel Xeon 6787P
 Max MHz: 3800
 Nominal: 2000
 Enabled: 172 cores, 2 chips, 2 threads/core
 Orderable: 1,2 Chips
 Cache L1: 64 KB I + 48 KB D on chip per core
 L2: 2 MB I+D on chip per core
 L3: 336 MB I+D on chip per chip
 Other: None
 Memory: 1 TB (16 x 64 GB 2Rx4 PC5-6400B-R)
 Storage: 1 X 3.2 TB NVMe SSD
 Cooling: DLC
 Other: None

Software

OS: Ubuntu 24.04.3 LTS
 Kernel 6.8.0-90-generic
 Compiler: C/C++: Version 2025.3 of Intel oneAPI DPC++/C++ Compiler for Linux;
 Fortran: Version 2025.3 of Intel Fortran Compiler for Linux
 Compiler Category: Vendor
 Firmware: HPE BIOS Version v1.60 released Jan-2026
 File System: ext4
 System State: Run level 5 (multi-user, graphical)
 Base Pointers: 64-bit
 Peak Pointers: 64-bit
 Other: jemalloc memory allocator v5.3
 Power Management: BIOS is set to prefer performance at the cost of additional power usage



SPEC CPU®2026 Floating Point Rate Result

Copyright 2026 Standard Performance Evaluation Corporation

Hewlett Packard Enterprise

(Test Sponsor: HPE)

ProLiant Compute DL380 Gen12
(2.00 GHz, Intel Xeon 6787P)

SPECrate®2026_fp_base = 637

SPECrate®2026_fp_peak = 637

CPU2026 License: 3
Test Sponsor: HPE
Tested by: HPE

Test Date: Feb-2026
Hardware Availability: Mar-2025
Software Availability: Jan-2026

Results Table

Benchmark	Base							Peak						
	Copies	Seconds	Ratio	Seconds	Ratio	Seconds	Ratio	Copies	Seconds	Ratio	Seconds	Ratio	Seconds	Ratio
709.cactus_r	344	261	1130	261	1130			344	261	1130	261	1130		
722.palm_r	344	867	524	865	525			344	867	524	865	525		
731.ascenc_r	344	278	1040	278	1040			344	278	1040	278	1040		
736.ocio_r	344	440	684	441	682			344	440	684	441	682		
737.gmsh_r	344	279	565	279	565			344	279	565	279	565		
748.flightdm_r	344	234	1050	234	1050			344	234	1050	234	1050		
749.fotonik3d_r	344	1615	246	1616	246			344	1615	246	1616	246		
765.roms_r	344	2113	256	2117	256			344	2113	256	2117	256		
766.femflow_r	344	324	1560	324	1560			344	324	1560	324	1560		
767.nest_r	344	360	757	361	756			344	360	757	361	756		
772.marian_r	344	522	1040	516	1050			344	522	1040	516	1050		
782.lbm_r	344	848	232	848	233			344	848	232	848	233		

SPECrate®2026_fp_base = **637**

SPECrate®2026_fp_peak = **637**

Results appear in the order in which they were run. Bold underlined text indicates a median measurement.

Submit Notes

The config file option 'submit' was used.
was used to generate numactl commands to bind each copy to a specific processor.
For details, please see the config file.

Operating System Notes

```
Stack size set to unlimited using "ulimit -s unlimited"
Transparent Huge Pages enabled by default
Prior to runcpu invocation
Filesystem page cache synced and cleared with:
sync; echo 3> /proc/sys/vm/drop_caches
runcpu command invoked through numactl i.e.:
numactl --interleave=all runcpu <etc>
```

Environment Variables Notes

Environment variables set by runcpu before the start of the run:
LD_LIBRARY_PATH = "/home/cpu2026/lib"
MALLOC_CONF = "retain:true"



SPEC CPU®2026 Floating Point Rate Result

Copyright 2026 Standard Performance Evaluation Corporation

Hewlett Packard Enterprise

(Test Sponsor: HPE)

ProLiant Compute DL380 Gen12
(2.00 GHz, Intel Xeon 6787P)

SPECrate®2026_fp_base = 637

SPECrate®2026_fp_peak = 637

CPU2026 License: 3

Test Sponsor: HPE

Tested by: HPE

Test Date: Feb-2026

Hardware Availability: Mar-2025

Software Availability: Jan-2026

General Notes

Binaries compiled on a system with 2x Intel Xeon Platinum 8280M CPU + 384GB RAM memory using Red Hat Enterprise Linux 8.4

NA: The test sponsor attests, as of date of publication, that CVE-2017-5754 (Meltdown) is mitigated in the system as tested and documented.

Yes: The test sponsor attests, as of date of publication, that CVE-2017-5753 (Spectre variant 1) is mitigated in the system as tested and documented.

Yes: The test sponsor attests, as of date of publication, that CVE-2017-5715 (Spectre variant 2) is mitigated in the system as tested and documented.

jemalloc, a general purpose malloc implementation built with the RedHat Enterprise 7.5, and the system compiler gcc 4.8.5 sources available from jemalloc.net or <https://github.com/jemalloc/jemalloc/releases>

Platform Notes

BIOS Configurations : Parameters are selected in the order shown below

Workload Profile set to General Throughput Compute

Enhanced Processor Performance Profile set to Aggressive

Thermal Configuration set to Maximum Cooling

Memory Patrol Scrubbing set to Disabled

Last Level Cache (LLC) Prefetch set to Enabled

XPT Prefetch set to Disabled

Intel UPI Prefetch set to Disabled

Workload Profile set to Custom

DCU Stream Prefetcher set to Disabled

Adjacent Sector Prefetch set to Disabled

Sysinfo program /home/cpu2026/bin/sysinfo

Rev: 069f95da7e7f5d81b2ce48a82150e54f

running on admin1 Wed Feb 4 01:30:20 2026

SUT (System Under Test) info as seen by some common utilities.

Table of contents

1. uname -srvm
2. w
3. Username
4. ulimit -a
5. sysinfo process ancestry
6. /proc/cpuinfo
7. lscpu
8. numactl --hardware
9. /proc/meminfo
10. who -r
11. Systemd service manager version: systemd 255 (255.4-lubuntu8.12)

(Continued on next page)



SPEC CPU®2026 Floating Point Rate Result

Copyright 2026 Standard Performance Evaluation Corporation

Hewlett Packard Enterprise

(Test Sponsor: HPE)

ProLiant Compute DL380 Gen12

(2.00 GHz, Intel Xeon 6787P)

SPECrate®2026_fp_base = 637

SPECrate®2026_fp_peak = 637

CPU2026 License: 3

Test Sponsor: HPE

Tested by: HPE

Test Date: Feb-2026

Hardware Availability: Mar-2025

Software Availability: Jan-2026

Platform Notes (Continued)

- 12. Services, from `systemctl list-unit-files`
- 13. Linux kernel boot-time arguments, from `/proc/cmdline`
- 14. `cpupower frequency-info`
- 15. `tuned-adm active`
- 16. `sysctl`
- 17. `/sys/kernel/mm/transparent_hugepage`
- 18. `/sys/kernel/mm/transparent_hugepage/khugepaged`
- 19. OS release
- 20. Disk information
- 21. `/sys/devices/virtual/dmi/id`
- 22. `dmidecode`
- 23. BIOS

```
-----
1. uname -srv
Linux 6.8.0-90-generic #91-Ubuntu SMP PREEMPT_DYNAMIC Tue Nov 18 14:14:30 UTC 2025 x86_64
-----
```

```
-----
2. w
01:30:20 up 17:46, 3 users, load average: 215.49, 309.58, 323.81
USER      TTY      FROM          LOGIN@      IDLE        JCPU       PCPU       WHAT
admin1    -        10.30.195.94  23:05      17:45m     0.00s     0.01s     sshd: admin1 [priv]
admin1    -        10.30.195.94  Tue07      17:45m     0.00s     0.11s     sshd: admin1 [priv]
admin1    tty1    -             Tue07      17:42m     0.03s     ?         -bash
-----
```

```
-----
3. Username
From environment variable $USER:  root
From the command 'logname':      admin1
-----
```

```
-----
4. ulimit -a
time(seconds)      unlimited
file(blocks)       unlimited
data(kbytes)       unlimited
stack(kbytes)      unlimited
coredump(blocks)   0
memory(kbytes)     unlimited
locked memory(kbytes) 132053172
process            4126342
nofiles            1024
vmemory(kbytes)   unlimited
locks              unlimited
rtprio             0
-----
```

(Continued on next page)



SPEC CPU®2026 Floating Point Rate Result

Copyright 2026 Standard Performance Evaluation Corporation

Hewlett Packard Enterprise

(Test Sponsor: HPE)

ProLiant Compute DL380 Gen12

(2.00 GHz, Intel Xeon 6787P)

SPECrate®2026_fp_base = 637

SPECrate®2026_fp_peak = 637

CPU2026 License: 3

Test Sponsor: HPE

Tested by: HPE

Test Date: Feb-2026

Hardware Availability: Mar-2025

Software Availability: Jan-2026

Platform Notes (Continued)

5. sysinfo process ancestry

```

/sbin/init
sshd: /usr/sbin/sshd -D [listener] 0 of 10-100 startups
sshd: admin1 [priv]
sshd: admin1@pts/0
-bash
sudo -i
sudo -i
-bash
-bash
-bash
runcpu --nobuild --reportable --action validate --define default-platform-flags --copies 344 -c
ic2025.3-core-avx512-cpu2026-0.902-rate-20260121.cfg --define smt-on --define cores=172 --define
physicalfirst --define invoke_with_interleave --define drop_caches --tune base -n 2 -o all fprate
runcpu --nobuild --reportable --action validate --define default-platform-flags --copies 344 --configfile
ic2025.3-core-avx512-cpu2026-0.902-rate-20260121.cfg --define smt-on --define cores=172 --define
physicalfirst --define invoke_with_interleave --define drop_caches --tune base --iterations 2
--output_format all --nopower --runmode rate --tune base --size refrate fprate --nopreenv --note-preenv
--logfile $SPEC/tmp/CPU2026.014/templogs/preenv.fprate.014.0.log --lognum 014.0 --from_runcpu 2
specperl $SPEC/bin/sysinfo
$SPEC = /home/cpu2026

```

6. /proc/cpuinfo

```

model name      : Intel(R) Xeon(R) 6787P
vendor_id      : GenuineIntel
cpu family     : 6
model          : 173
stepping       : 1
microcode      : 0x1000411
bugs           : spectre_v1 spectre_v2 spec_store_bypass swapgs bhi vmscape
cpu cores      : 86
siblings       : 172
2 physical ids (chips)
344 processors (hardware threads)
physical id 0: core ids 0-42,64-106
physical id 1: core ids 0-42,64-106
physical id 0: apicids 0-85,128-213
physical id 1: apicids 256-341,384-469

```

Caution: /proc/cpuinfo data regarding chips, cores, and threads is not necessarily reliable, especially for virtualized systems. Use the above data carefully.

7. lscpu

```

From lscpu from util-linux 2.39.3:
Architecture:          x86_64

```

(Continued on next page)



SPEC CPU®2026 Floating Point Rate Result

Copyright 2026 Standard Performance Evaluation Corporation

Hewlett Packard Enterprise

(Test Sponsor: HPE)

ProLiant Compute DL380 Gen12

(2.00 GHz, Intel Xeon 6787P)

SPECrate®2026_fp_base = 637

SPECrate®2026_fp_peak = 637

CPU2026 License: 3
Test Sponsor: HPE
Tested by: HPE

Test Date: Feb-2026
Hardware Availability: Mar-2025
Software Availability: Jan-2026

Platform Notes (Continued)

```

CPU op-mode(s):          32-bit, 64-bit
Address sizes:          46 bits physical, 57 bits virtual
Byte Order:             Little Endian
CPU(s):                 344
On-line CPU(s) list:   0-343
Vendor ID:              GenuineIntel
BIOS Vendor ID:        Intel(R) Corporation
Model name:             Intel(R) Xeon(R) 6787P
BIOS Model name:       Intel(R) Xeon(R) 6787P  CPU @ 2.0GHz
BIOS CPU family:       179
CPU family:             6
Model:                  173
Thread(s) per core:    2
Core(s) per socket:    86
Socket(s):              2
Stepping:               1
CPU(s) scaling MHz:    22%
CPU max MHz:            3800.0000
CPU min MHz:            800.0000
BogoMIPS:               4000.00

```

Flags:

```

fpu vme de pse tsc msr pae mce cx8 apic sep mtrr pge mca cmov pat
pse36 clflush dts acpi mmx fxsr sse2 ss ht tm pbe syscall nx
pdpe1gb rdtscp lm constant_tsc art arch_perfmon pebs bts rep_good
nopl xtopology nonstop_tsc cpuid aperfperf tsc_known_freq pni
pclmulqdq dtes64 monitor ds_cpl vmx smx est tm2 ssse3 sdbg fma cx16
xtpr pdcm pcid dca sse4_1 sse4_2 x2apic movbe popcnt
tsc_deadline_timer aes xsave avx f16c rdrand lahf_lm abm
3dnowprefetch cpuid_fault epb cat_l3 cat_l2 cdp_l3 cdp_l2 ssbd mba
ibrs ibpb stibp ibrs_enhanced tpr_shadow flexpriority ept vpid ept_ad
fsgsbase tsc_adjust bmi1 avx2 smep bmi2 erms invpcid cqm rdt_a
avx512f avx512dq rdseed adx smap avx512ifma clflushopt clwb intel_pt
avx512cd sha_ni avx512bw avx512vl xsaveopt xsavec xgetbv1 xsaves
cqm_llc cqm_occup_llc cqm_mbm_total cqm_mbm_local split_lock_detect
user_shstk avx_vnni avx512_bf16 wbnoinvd dtherm ida arat pln pts hwp
hwp_act_window hwp_epp hwp_pkg_req vnmi avx512vbmi umip pku ospke
waitpkg avx512_vbmi2 gfni vaes vpclmulqdq avx512_vnni avx512_bitalg
tme avx512_vpopcntdq la57 rdpid bus_lock_detect cldemote movdiri
movdir64b enqcmd fsrm md_clear serialize tsxldtrk pconfig arch_lbr
ibt amx_bf16 avx512_fp16 amx_tile amx_int8 flush_lld
arch_capabilities ibpb_exit_to_user

```

```

Virtualization:         VT-x
L1d cache:              8.1 MiB (172 instances)
L1i cache:              10.8 MiB (172 instances)
L2 cache:               344 MiB (172 instances)
L3 cache:               672 MiB (2 instances)
NUMA node(s):           4
NUMA node0 CPU(s):     0-42,172-214

```

(Continued on next page)



SPEC CPU®2026 Floating Point Rate Result

Copyright 2026 Standard Performance Evaluation Corporation

Hewlett Packard Enterprise

(Test Sponsor: HPE)

ProLiant Compute DL380 Gen12

(2.00 GHz, Intel Xeon 6787P)

SPECrate®2026_fp_base = 637

SPECrate®2026_fp_peak = 637

CPU2026 License: 3

Test Sponsor: HPE

Tested by: HPE

Test Date: Feb-2026

Hardware Availability: Mar-2025

Software Availability: Jan-2026

Platform Notes (Continued)

```

NUMA node1 CPU(s):           43-85,215-257
NUMA node2 CPU(s):           86-128,258-300
NUMA node3 CPU(s):           129-171,301-343
Vulnerability Gather data sampling: Not affected
Vulnerability Itlb multihit:   Not affected
Vulnerability L1tf:           Not affected
Vulnerability Mds:            Not affected
Vulnerability Meltdown:       Not affected
Vulnerability Mmio stale data: Not affected
Vulnerability Reg file data sampling: Not affected
Vulnerability Retbleed:       Not affected
Vulnerability Spec rstack overflow: Not affected
Vulnerability Spec store bypass: Mitigation; Speculative Store Bypass disabled via prctl
Vulnerability Spectre v1:      Mitigation; usercopy/swaps barriers and __user pointer sanitization
Vulnerability Spectre v2:      Mitigation; Enhanced / Automatic IBRS; IBPB conditional; RSB filling;
                                PBRSE-eIBRS Not affected; BHI BHI_DIS_S
Vulnerability Srbds:          Not affected
Vulnerability Tsx async abort: Not affected
Vulnerability Vmscape:        Mitigation; IBPB before exit to userspace

```

From lscpu --cache:

NAME	ONE-SIZE	ALL-SIZE	WAYS	TYPE	LEVEL	SETS	PHY-LINE	COHERENCY-SIZE
L1d	48K	8.1M	12	Data	1	64	1	64
L1i	64K	10.8M	16	Instruction	1	64	1	64
L2	2M	344M	16	Unified	2	2048	1	64
L3	336M	672M	16	Unified	3	344064	1	64

8. numactl --hardware

NOTE: a numactl 'node' might or might not correspond to a physical chip.

```

available: 4 nodes (0-3)
node 0 cpus: 0-42,172-214
node 0 size: 257667 MB
node 0 free: 223318 MB
node 1 cpus: 43-85,215-257
node 1 size: 258018 MB
node 1 free: 226609 MB
node 2 cpus: 86-128,258-300
node 2 size: 258018 MB
node 2 free: 226659 MB
node 3 cpus: 129-171,301-343
node 3 size: 257960 MB
node 3 free: 226322 MB
node distances:
node  0  1  2  3
 0:  10  12  21  21
 1:  12  10  21  21

```

(Continued on next page)



SPEC CPU®2026 Floating Point Rate Result

Copyright 2026 Standard Performance Evaluation Corporation

Hewlett Packard Enterprise

(Test Sponsor: HPE)

ProLiant Compute DL380 Gen12

(2.00 GHz, Intel Xeon 6787P)

SPECrate®2026_fp_base = 637

SPECrate®2026_fp_peak = 637

CPU2026 License: 3
Test Sponsor: HPE
Tested by: HPE

Test Date: Feb-2026
Hardware Availability: Mar-2025
Software Availability: Jan-2026

Platform Notes (Continued)

```
2: 21 21 10 12
3: 21 21 12 10
```

9. /proc/meminfo

```
MemTotal: 1056425392 kB
```

10. who -r

```
run-level 5 Feb 3 07:44
```

11. Systemd service manager version: systemd 255 (255.4-lubuntu8.12)

```
Default Target Status
graphical running
```

12. Services, from systemctl list-unit-files

STATE	UNIT FILES
enabled	ModemManager apparmor apport blk-availability cloud-config cloud-final cloud-init cloud-init-local console-setup cron dmesg e2scrub_reap finalrd getty@ gpu-manager grub-common grub-initrd-fallback keyboard-setup lvm2-monitor multipathd networkd-dispatcher open-iscsi open-vm-tools pollinate rsyslog secureboot-db setvtrgb snapd sysstat systemd-networkd systemd-networkd-wait-online systemd-pstore systemd-resolved systemd-timesyncd thermald tuned ua-reboot-cmds ubuntu-advantage udisks2 ufw unattended-upgrades vgauth
enabled-runtime	netplan-ovs-cleanup systemd-fsck-root systemd-remount-fs
disabled	console-getty debug-shell iscsid nftables rsync serial-getty@ ssh systemd-boot-check-no-failures systemd-confext systemd-network-generator systemd-networkd-wait-online@ systemd-pcrlock-file-system systemd-pcrlock-firmware-code systemd-pcrlock-firmware-config systemd-pcrlock-machine-id systemd-pcrlock-make-policy systemd-pcrlock-secureboot-authority systemd-pcrlock-secureboot-policy systemd-sysext systemd-time-wait-sync upower
indirect	systemd-sysupdate systemd-sysupdate-reboot uidd
masked	cryptdisks cryptdisks-early hwclock multipath-tools-boot screen-cleanup sudo x11-common

13. Linux kernel boot-time arguments, from /proc/cmdline

```
BOOT_IMAGE=/boot/vmlinuz-6.8.0-90-generic
root=UUID=390648eb-0859-4220-8de1-88ef9034ae45
ro
```

14. cpupower frequency-info

```
analyzing CPU 7:
current policy: frequency should be within 800 MHz and 3.80 GHz.
The governor "performance" may decide which speed to use
```

(Continued on next page)



SPEC CPU®2026 Floating Point Rate Result

Copyright 2026 Standard Performance Evaluation Corporation

Hewlett Packard Enterprise

(Test Sponsor: HPE)

ProLiant Compute DL380 Gen12

(2.00 GHz, Intel Xeon 6787P)

SPECrate®2026_fp_base = 637

SPECrate®2026_fp_peak = 637

CPU2026 License: 3

Test Sponsor: HPE

Tested by: HPE

Test Date: Feb-2026

Hardware Availability: Mar-2025

Software Availability: Jan-2026

Platform Notes (Continued)

within this range.

boost state support:

Supported: yes

Active: yes

15. tuned-adm active

Current active profile: throughput-performance

16. sysctl

kernel.numa_balancing	1
kernel.randomize_va_space	2
vm.compaction_proactiveness	20
vm.dirty_background_bytes	0
vm.dirty_background_ratio	10
vm.dirty_bytes	0
vm.dirty_expire_centisecs	3000
vm.dirty_ratio	40
vm.dirty_writeback_centisecs	500
vm.dirtytime_expire_seconds	43200
vm.extfrag_threshold	500
vm.min_unmapped_ratio	1
vm.nr_hugepages	0
vm.nr_hugepages_mempolicy	0
vm.nr_overcommit_hugepages	0
vm.swappiness	10
vm.watermark_boost_factor	15000
vm.watermark_scale_factor	10
vm.zone_reclaim_mode	0

17. /sys/kernel/mm/transparent_hugepage

defrag	always defer+advise [advise] never
enabled	always [advise] never
hpage_pmd_size	2097152
shmem_enabled	always within_size advise [never] deny force

18. /sys/kernel/mm/transparent_hugepage/khugepaged

alloc_sleep_millisecs	60000
defrag	1
max_ptes_none	511
max_ptes_shared	256
max_ptes_swap	64
pages_to_scan	4096
scan_sleep_millisecs	10000

(Continued on next page)



SPEC CPU®2026 Floating Point Rate Result

Copyright 2026 Standard Performance Evaluation Corporation

Hewlett Packard Enterprise

(Test Sponsor: HPE)

ProLiant Compute DL380 Gen12
(2.00 GHz, Intel Xeon 6787P)

SPECrate®2026_fp_base = 637

SPECrate®2026_fp_peak = 637

CPU2026 License: 3

Test Sponsor: HPE

Tested by: HPE

Test Date: Feb-2026

Hardware Availability: Mar-2025

Software Availability: Jan-2026

Platform Notes (Continued)

19. OS release

From /etc/*-release /etc/*-version
os-release Ubuntu 24.04.3 LTS

20. Disk information

SPEC is set to: /home/cpu2026

Filesystem	Type	Size	Used	Avail	Use%	Mounted on
/dev/nvme0n1p2	ext4	2.9T	138G	2.6T	5%	/

21. /sys/devices/virtual/dmi/id

Vendor: HPE
Product: HPE ProLiant Compute DL380 Gen12
Product Family: ProLiant
Serial: CNXD1M02CK

22. dmidecode

Additional information from dmidecode 3.5 follows. WARNING: Use caution when you interpret this section. The 'dmidecode' program reads system data which is "intended to allow hardware to be accurately determined", but the intent may not be met, as there are frequent changes to hardware, firmware, and the "DMTF SMBIOS" standard.

Memory:

2x Micron MTC40F2046S1RC64BD2 MWFF 64 GB 2 rank 6400
14x Micron MTC40F2046S1RC64BD2 QSFF 64 GB 2 rank 6400

23. BIOS

(This section combines info from /sys/devices and dmidecode.)

BIOS Vendor: HPE
BIOS Version: 1.60
BIOS Date: 01/09/2026
BIOS Revision: 1.60
Firmware Revision: 1.18

Compiler Version Notes

=====
C | 782.lbm_r(base)

Intel(R) oneAPI DPC++/C++ Compiler for applications running on Intel(R) 64,
Version 2025.3.0 Build 20251010

(Continued on next page)



SPEC CPU®2026 Floating Point Rate Result

Copyright 2026 Standard Performance Evaluation Corporation

Hewlett Packard Enterprise

(Test Sponsor: HPE)

ProLiant Compute DL380 Gen12
(2.00 GHz, Intel Xeon 6787P)

SPECrate®2026_fp_base = 637

SPECrate®2026_fp_peak = 637

CPU2026 License: 3

Test Sponsor: HPE

Tested by: HPE

Test Date: Feb-2026

Hardware Availability: Mar-2025

Software Availability: Jan-2026

Compiler Version Notes (Continued)

Copyright (C) 1985-2025 Intel Corporation. All rights reserved.

=====
C++ | 731.astcenc_r(base) 736.ocio_r(base) 748.flightdm_r(base)
| 766.femflow_r(base) 767.nest_r(base) 772.marian_r(base)
=====

Intel(R) oneAPI DPC++/C++ Compiler for applications running on Intel(R) 64,
Version 2025.3.0 Build 20251010
Copyright (C) 1985-2025 Intel Corporation. All rights reserved.

=====
C++, C | 709.cactus_r(base) 737.gmsh_r(base)
=====

Intel(R) oneAPI DPC++/C++ Compiler for applications running on Intel(R) 64,
Version 2025.3.0 Build 20251010
Copyright (C) 1985-2025 Intel Corporation. All rights reserved.

=====
Fortran | 722.palm_r(base) 749.fotonik3d_r(base) 765.roms_r(base)
=====

Intel(R) Fortran Compiler for applications running on Intel(R) 64, Version
2025.3.0 Build 20251010
Copyright (C) 1985-2025 Intel Corporation. All rights reserved.

Base Compiler Invocation

C benchmarks:

icx

C++ benchmarks:

icpx

Fortran benchmarks:

ifx

Benchmarks using both C and C++:

icpx icx



SPEC CPU®2026 Floating Point Rate Result

Copyright 2026 Standard Performance Evaluation Corporation

Hewlett Packard Enterprise

(Test Sponsor: HPE)

ProLiant Compute DL380 Gen12
(2.00 GHz, Intel Xeon 6787P)

SPECrate®2026_fp_base = 637

SPECrate®2026_fp_peak = 637

CPU2026 License: 3

Test Sponsor: HPE

Tested by: HPE

Test Date: Feb-2026

Hardware Availability: Mar-2025

Software Availability: Jan-2026

Base Portability Flags

```

709.cactus_r: -DSPEC_LP64
722.palm_r: -DSPEC_LP64
731.ascenc_r: -DSPEC_LP64
736.ocio_r: -DSPEC_LP64
737.gmsh_r: -DSPEC_LP64 -fno-associative-math
748.flightdm_r: -DSPEC_LP64
749.fotonik3d_r: -DSPEC_LP64
765.roms_r: -DSPEC_LP64
766.femflow_r: -DSPEC_LP64
767.nest_r: -DSPEC_LP64
772.marian_r: -DSPEC_LP64
782.lbm_r: -DSPEC_LP64

```

Base Optimization Flags

C benchmarks:

```

-m64 -std=c18 -Wl,-z,muldefs -xCORE-AVX512 -O3 -ffp-model=fast
-flto -mfpmath=sse -funroll-loops -qopt-mem-layout-trans=4
-L/usr/local/jemalloc-5.3.0/lib -ljemalloc

```

C++ benchmarks:

```

-m64 -std=c++17 -Wl,-z,muldefs -xCORE-AVX512 -O3 -ffp-model=fast
-flto -mfpmath=sse -funroll-loops -qopt-mem-layout-trans=4
-L/usr/local/jemalloc-5.3.0/lib -ljemalloc

```

Fortran benchmarks:

```

-m64 -stand f18 -Wl,-z,muldefs -xCORE-AVX512 -O3 -ffp-model=fast
-flto -mfpmath=sse -funroll-loops -qopt-mem-layout-trans=4
-nostandard-realloc-lhs -align array32byte -auto
-L/usr/local/jemalloc-5.3.0/lib -ljemalloc

```

Benchmarks using both C and C++:

```

-m64 -std=c++17 -std=c18 -Wl,-z,muldefs -xCORE-AVX512 -O3
-ffp-model=fast -flto -mfpmath=sse -funroll-loops
-qopt-mem-layout-trans=4 -L/usr/local/jemalloc-5.3.0/lib -ljemalloc

```

Peak Optimization Flags

C benchmarks:

782.lbm_r: basepeak = yes

(Continued on next page)



SPEC CPU®2026 Floating Point Rate Result

Copyright 2026 Standard Performance Evaluation Corporation

Hewlett Packard Enterprise

(Test Sponsor: HPE)

ProLiant Compute DL380 Gen12

(2.00 GHz, Intel Xeon 6787P)

SPECrate®2026_fp_base = 637

SPECrate®2026_fp_peak = 637

CPU2026 License: 3

Test Sponsor: HPE

Tested by: HPE

Test Date: Feb-2026

Hardware Availability: Mar-2025

Software Availability: Jan-2026

Peak Optimization Flags (Continued)

C++ benchmarks:

731.ascenc_r: basepeak = yes

736.ocio_r: basepeak = yes

748.flightdm_r: basepeak = yes

766.femflow_r: basepeak = yes

767.nest_r: basepeak = yes

772.marian_r: basepeak = yes

Fortran benchmarks:

722.palm_r: basepeak = yes

749.fotonik3d_r: basepeak = yes

765.roms_r: basepeak = yes

Benchmarks using both C and C++:

709.cactus_r: basepeak = yes

737.gmsh_r: basepeak = yes

The flags files that were used to format this result can be browsed at

<http://www.spec.org/cpu2026/results/flags/HPE-Platform-Flags-Intel-GNR-rev1.4.html>

<http://www.spec.org/cpu2026/results/flags/Intel-ic2025-official-linux64-cpu2026-0.902.html>

You can also download the XML flags sources by saving the following links:

<http://www.spec.org/cpu2026/results/flags/HPE-Platform-Flags-Intel-GNR-rev1.4.xml>

<http://www.spec.org/cpu2026/results/flags/Intel-ic2025-official-linux64-cpu2026-0.902.xml>

SPEC CPU and SPECrate are registered trademarks of the Standard Performance Evaluation Corporation. All other brand and product names appearing in this result are trademarks or registered trademarks of their respective holders.

For questions about this result, please contact the tester. For other inquiries, please contact info@spec.org.

Tested with SPEC CPU®2026 v0.902.0 on 2026-02-03 20:30:20-0500.

Report generated on 2026-05-11 16:37:42 by CPU2026 PDF formatter (unknown).

Originally published on 2026-05-05.