



SPEC CPU®2026 Floating Point Rate Result

Copyright 2026 Standard Performance Evaluation Corporation

IEIT Systems Co., Ltd.

SPECrate®2026_fp_base = 746

meta brain NF5280G8 (Intel Xeon 6787P)

SPECrate®2026_fp_peak = 761

CPU2026 License: 3358

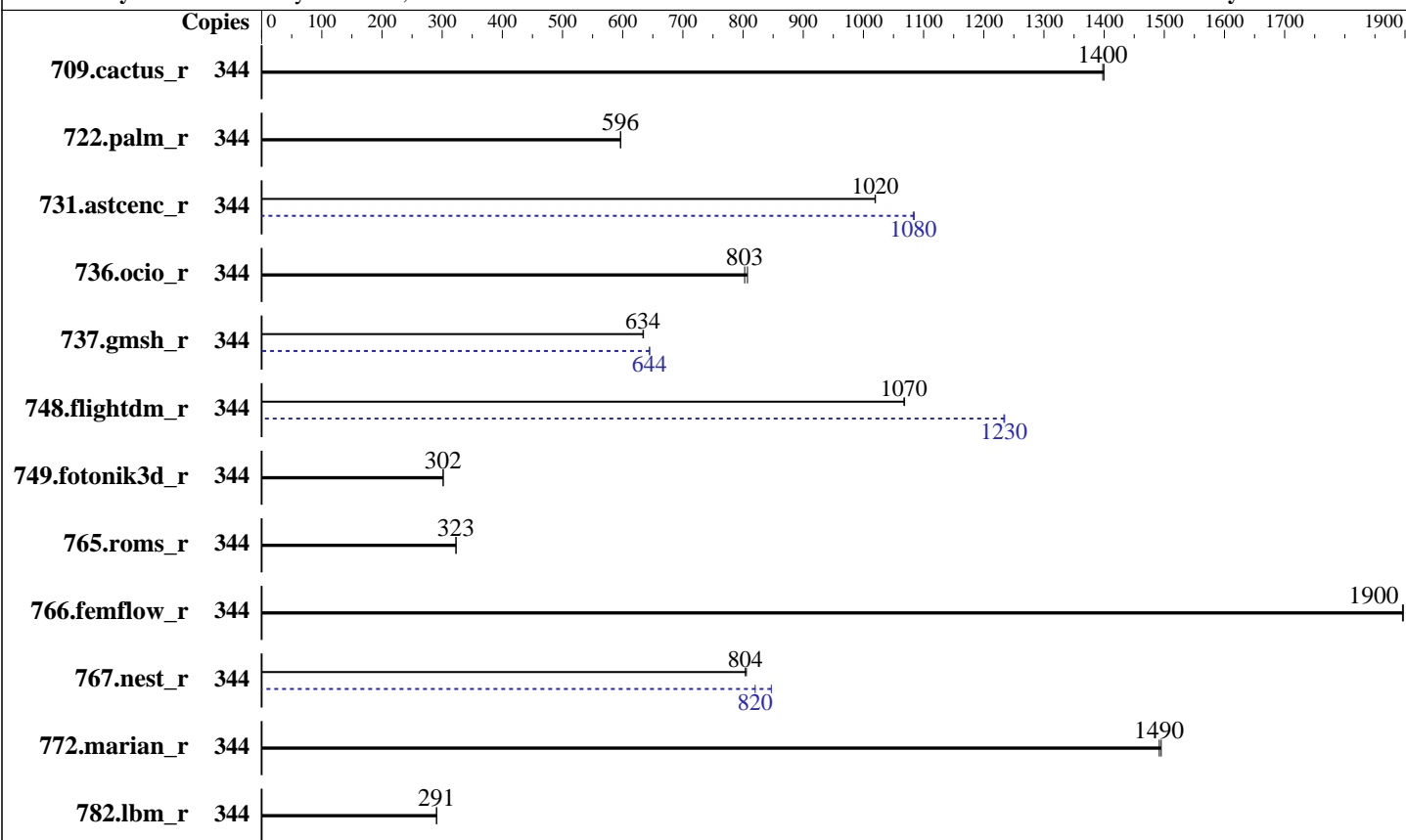
Test Date: May-2026

Test Sponsor: IEIT Systems Co., Ltd.

Hardware Availability: Apr-2025

Tested by: IEIT Systems Co., Ltd.

Software Availability: Mar-2026



Hardware

CPU Name: Intel Xeon 6787P
 Max MHz: 3800
 Nominal: 2000
 Enabled: 172 cores, 2 chips, 2 threads/core
 Orderable: 1,2 chips
 Cache L1: 64 KB I + 48 KB D on chip per core
 L2: 2 MB I+D on chip per core
 L3: 336 MB I+D on chip per chip
 Other: None
 Memory: 1 TB (16 x 64 GB 2Rx4 PC5-88/64B-H, running at 8000)
 Storage: 1 x 1 TB NVME SSD
 Cooling: Air
 Other: None

Software

OS: SUSE Linux Enterprise Server 15.7
 6.4.0-150700.51-default
 Compiler: C/C++: Version 2026.0 of Intel oneAPI DPC++/C++
 Compiler for Linux;
 Fortran: Version 2026.0 of Intel Fortran
 Compiler for Linux
 Compiler Category: Vendor
 Firmware: Version 04.01.00 released Dec-2025
 File System: xfs
 System State: Run level 3 (multi-user)
 Base Pointers: 64-bit
 Peak Pointers: 64-bit
 Other: jemalloc memory allocator v5.3
 Power Management: BIOS and OS set to prefer performance at the cost
 of additional power usage.



SPEC CPU®2026 Floating Point Rate Result

Copyright 2026 Standard Performance Evaluation Corporation

IEIT Systems Co., Ltd.

SPECrate®2026_fp_base = 746

meta brain NF5280G8 (Intel Xeon 6787P)

SPECrate®2026_fp_peak = 761

CPU2026 License: 3358

Test Sponsor: IEIT Systems Co., Ltd.

Tested by: IEIT Systems Co., Ltd.

Test Date: May-2026

Hardware Availability: Apr-2025

Software Availability: Mar-2026

Results Table

Benchmark	Base							Peak						
	Copies	Seconds	Ratio	Seconds	Ratio	Seconds	Ratio	Copies	Seconds	Ratio	Seconds	Ratio	Seconds	Ratio
709.cactus_r	344	<u>211</u>	<u>1400</u>	211	1400			344	<u>211</u>	<u>1400</u>	211	1400		
722.palm_r	344	<u>762</u>	<u>596</u>	761	597			344	<u>762</u>	<u>596</u>	761	597		
731.ascenc_r	344	283	1020	<u>283</u>	<u>1020</u>			344	266	1080	<u>267</u>	<u>1080</u>		
736.ocio_r	344	<u>375</u>	<u>803</u>	373	807			344	<u>375</u>	<u>803</u>	373	807		
737.gmsh_r	344	249	635	<u>249</u>	<u>634</u>			344	<u>245</u>	<u>644</u>	245	645		
748.flightdm_r	344	231	1070	<u>231</u>	<u>1070</u>			344	<u>200</u>	<u>1230</u>	199	1230		
749.fotonik3d_r	344	<u>1318</u>	<u>302</u>	1318	302			344	<u>1318</u>	<u>302</u>	1318	302		
765.roms_r	344	1677	323	<u>1678</u>	<u>323</u>			344	1677	323	<u>1678</u>	<u>323</u>		
766.femflow_r	344	<u>266</u>	<u>1900</u>	266	1900			344	<u>266</u>	<u>1900</u>	266	1900		
767.nest_r	344	<u>339</u>	<u>804</u>	339	806			344	<u>333</u>	<u>820</u>	322	847		
772.marian_r	344	<u>364</u>	<u>1490</u>	363	1490			344	<u>364</u>	<u>1490</u>	363	1490		
782.lbm_r	344	<u>678</u>	<u>291</u>	678	291			344	<u>678</u>	<u>291</u>	678	291		

SPECrate®2026_fp_base = **746**

SPECrate®2026_fp_peak = **761**

Results appear in the order in which they were run. Bold underlined text indicates a median measurement.

Submit Notes

The numactl mechanism was used to bind copies to processors. The config file option 'submit' was used to generate numactl commands to bind each copy to a specific processor. For details, please see the config file.

Operating System Notes

Stack size set to unlimited using "ulimit -s unlimited"

Environment Variables Notes

Environment variables set by runcpu before the start of the run:
LD_LIBRARY_PATH = "/home/cpu2026/lib"
MALLOC_CONF = "retain:true"

General Notes

Binaries compiled on a system with 2x Intel Xeon Platinum 8280M CPU + 384GB RAM memory using CentOS Stream 9.
Transparent Huge Pages enabled by default
Prior to runcpu invocation
Filesystem page cache synced and cleared with:
sync; echo 3> /proc/sys/vm/drop_caches

(Continued on next page)



SPEC CPU®2026 Floating Point Rate Result

Copyright 2026 Standard Performance Evaluation Corporation

IEIT Systems Co., Ltd.

SPECrate®2026_fp_base = 746

meta brain NF5280G8 (Intel Xeon 6787P)

SPECrate®2026_fp_peak = 761

CPU2026 License: 3358

Test Sponsor: IEIT Systems Co., Ltd.

Tested by: IEIT Systems Co., Ltd.

Test Date: May-2026

Hardware Availability: Apr-2025

Software Availability: Mar-2026

General Notes (Continued)

runcpu command invoked through numactl i.e.:

```
numactl --interleave=all runcpu <etc>
jemalloc, a general purpose malloc implementation
built with the CentOS Stream 9, and the system compiler gcc 11.5.0
sources available from jemalloc.net or https://github.com/jemalloc/jemalloc/releases
```

Platform Notes

BIOS configuration:
ENERGY_PERF_BIAS_CFG mode set to Performance
SNC set to Enabled
VT Support set to Disable
Hardware P-states set to Disable
OS configuration:
Tuned-adm was set to throughput-performance using `~tuned-adm profile throughput-performance`

Sysinfo program /home/cpu2026/bin/sysinfo
Rev: 779ab21020787073335a329f3a45e2cd
running on localhost Thu May 21 04:30:32 2026

SUT (System Under Test) info as seen by some common utilities.

Table of contents

1. `uname -srvm`
2. `w`
3. Username
4. `ulimit -a`
5. `sysinfo process ancestry`
6. `/proc/cpuinfo`
7. `lscpu`
8. `numactl --hardware`
9. `/proc/meminfo`
10. `who -r`
11. Systemd service manager version: `systemd 254 (254.24+suse.148.g83b9060b6e)`
12. Services, from `systemctl list-unit-files`
13. Linux kernel boot-time arguments, from `/proc/cmdline`
14. `cpupower frequency-info`
15. `tuned-adm active`
16. `sysctl`
17. `/sys/kernel/mm/transparent_hugepage`
18. `/sys/kernel/mm/transparent_hugepage/khugepaged`
19. OS release
20. Disk information
21. `/sys/devices/virtual/dmi/id`

(Continued on next page)



SPEC CPU®2026 Floating Point Rate Result

Copyright 2026 Standard Performance Evaluation Corporation

IEIT Systems Co., Ltd.

SPECrate®2026_fp_base = 746

meta brain NF5280G8 (Intel Xeon 6787P)

SPECrate®2026_fp_peak = 761

CPU2026 License: 3358

Test Sponsor: IEIT Systems Co., Ltd.

Tested by: IEIT Systems Co., Ltd.

Test Date: May-2026

Hardware Availability: Apr-2025

Software Availability: Mar-2026

Platform Notes (Continued)

22. dmidecode

23. BIOS

1. uname -srvm

```
Linux 6.4.0-150700.51-default #1 SMP PREEMPT_DYNAMIC Wed Apr 30 21:35:43 UTC 2025 (6930611) x86_64
```

2. w

```
04:30:32 up 6:35, 1 user, load average: 132.70, 280.07, 310.95
USER      TTY      FROM          LOGIN@      IDLE        JCPU      PCPU WHAT
root      tty1    -             06May25    4:30m     1.39s    0.01s sh
reportable-ic2026.0-lin-sapphirerapids-rate-smt-on-20260429.sh
```

3. Username

```
From environment variable $USER: root
```

4. ulimit -a

```
core file size          (blocks, -c) unlimited
data seg size           (kbytes, -d) unlimited
scheduling priority     (-e) 0
file size                (blocks, -f) unlimited
pending signals         (-i) 4123784
max locked memory       (kbytes, -l) 8192
max memory size         (kbytes, -m) unlimited
open files              (-n) 1024
pipe size                (512 bytes, -p) 8
POSIX message queues    (bytes, -q) 819200
real-time priority      (-r) 0
stack size               (kbytes, -s) unlimited
cpu time                 (seconds, -t) unlimited
max user processes      (-u) 4123784
virtual memory          (kbytes, -v) unlimited
file locks               (-x) unlimited
```

5. sysinfo process ancestry

```
/usr/lib/systemd/systemd --switched-root --system --deserialize=31
login -- root
-bash
sh reportable-ic2026.0-lin-sapphirerapids-rate-smt-on-20260429.sh
runcpu --nobuild --reportable --action validate --define default-platform-flags --copies 344 -c
ic2026.0-sapphirerapids-cpu2026-1.0.1-rate-20260429.cfg --define smt-on --define cores=172 --define
physicalfirst --define invoke_with_interleave --define drop_caches --tune base,peak -o all fprate
```

(Continued on next page)



SPEC CPU®2026 Floating Point Rate Result

Copyright 2026 Standard Performance Evaluation Corporation

IEIT Systems Co., Ltd.

SPECrate®2026_fp_base = 746

meta brain NF5280G8 (Intel Xeon 6787P)

SPECrate®2026_fp_peak = 761

CPU2026 License: 3358

Test Date: May-2026

Test Sponsor: IEIT Systems Co., Ltd.

Hardware Availability: Apr-2025

Tested by: IEIT Systems Co., Ltd.

Software Availability: Mar-2026

Platform Notes (Continued)

```

runccpu --nobuild --reportable --action validate --define default-platform-flags --copies 344 --configfile
ic2026.0-sapphirerapids-cpu2026-1.0.1-rate-20260429.cfg --define smt-on --define cores=172 --define
physicalfirst --define invoke_with_interleave --define drop_caches --tune base,peak --output_format all
--nopower --runmode rate --tune base:peak --size refrate fprate --nopreenv --note-preenv --logfile
$SPEC/tmp/CPU2026.003/templogs/preenv.fprate.003.0.log --lognum 003.0 --from_runccpu 2
specperl $SPEC/bin/sysinfo
$SPEC = /home/cpu2026

```

6. /proc/cpuinfo

```

model name      : Intel(R) Xeon(R) 6787P
vendor_id      : GenuineIntel
cpu family     : 6
model          : 173
stepping       : 1
microcode      : 0x10003d0
bugs           : spectre_v1 spectre_v2 spec_store_bypass swapgs bhi
cpu cores      : 86
siblings       : 172
2 physical ids (chips)
344 processors (hardware threads)
physical id 0: core ids 0-42,64-106
physical id 1: core ids 0-42,64-106
physical id 0: apicids 0-85,128-213
physical id 1: apicids 256-341,384-469

```

Caution: /proc/cpuinfo data regarding chips, cores, and threads is not necessarily reliable, especially for virtualized systems. Use the above data carefully.

7. lscpu

From lscpu from util-linux 2.40.4:

```

Architecture:          x86_64
CPU op-mode(s):        32-bit, 64-bit
Address sizes:          52 bits physical, 57 bits virtual
Byte Order:             Little Endian
CPU(s):                 344
On-line CPU(s) list:   0-343
Vendor ID:              GenuineIntel
Model name:             Intel(R) Xeon(R) 6787P
CPU family:             6
Model:                  173
Thread(s) per core:    2
Core(s) per socket:    86
Socket(s):              2
Stepping:               1
Frequency boost:        enabled

```

(Continued on next page)



SPEC CPU®2026 Floating Point Rate Result

Copyright 2026 Standard Performance Evaluation Corporation

IEIT Systems Co., Ltd.

SPECrate®2026_fp_base = 746

meta brain NF5280G8 (Intel Xeon 6787P)

SPECrate®2026_fp_peak = 761

CPU2026 License: 3358

Test Sponsor: IEIT Systems Co., Ltd.

Tested by: IEIT Systems Co., Ltd.

Test Date: May-2026

Hardware Availability: Apr-2025

Software Availability: Mar-2026

Platform Notes (Continued)

```

CPU(s) scaling MHz:          101%
CPU max MHz:                2001.0000
CPU min MHz:                 800.0000
BogoMIPS:                    4000.00
Flags:                        fpu vme de pse tsc msr pae mce cx8 apic sep mtrr pge mca cmov pat
                               pse36 clflush dts acpi mmx fxsr sse sse2 ss ht tm pbe syscall nx
                               pdpe1gb rdtscp lm constant_tsc art arch_perfmon pebs bts rep_good
                               nopl xtopology nonstop_tsc cpuid aperfmperf tsc_known_freq pni
                               pclmulqdq dtes64 ds_cpl smx est tm2 ssse3 sdbg fma cx16 xtpr pdcm
                               pcid dca sse4_1 sse4_2 x2apic movbe popcnt tsc_deadline_timer aes
                               xsave avx f16c rdrand lahf_lm abm 3dnowprefetch cpuid_fault epb
                               cat_l3 cat_l2 cdp_l3 intel_ppin cdp_l2 ssbd mba ibrs ibpb stibp
                               ibrs_enhanced fsgsbase tsc_adjust bmi1 avx2 smep bmi2 erms invpcid
                               cqm rdt_a avx512f avx512dq rdseed adx smap avx512ifma clflushopt clwb
                               intel_pt avx512cd sha_ni avx512bw avx512vl xsaveopt xsavec xgetbv1
                               xsaves cqm_llc cqm_occup_llc cqm_mbm_total cqm_mbm_local
                               split_lock_detect user_shstk avx_vnni avx512_bf16 wbnoinvd dtherm ida
                               arat pln pts avx512vbmi umip pku ospke waitpkg avx512_vbmi2 gfni vaes
                               vpclmulqdq avx512_vnni avx512_bitalg tme avx512_vpopcntdq la57 rdpid
                               bus_lock_detect cldemote movdiri movdir64b enqcmd fsrm md_clear
                               serialize tsxldtrk pconfig arch_lbr ibt amx_bf16 avx512_fp16 amx_tile
                               amx_int8 flush_lld arch_capabilities
L1d cache:                    8.1 MiB (172 instances)
L1i cache:                    10.8 MiB (172 instances)
L2 cache:                     344 MiB (172 instances)
L3 cache:                     672 MiB (2 instances)
NUMA node(s):                 4
NUMA node0 CPU(s):            0-42,172-214
NUMA node1 CPU(s):            43-85,215-257
NUMA node2 CPU(s):            86-128,258-300
NUMA node3 CPU(s):            129-171,301-343
Vulnerability Gather data sampling: Not affected
Vulnerability Itlb multihit:   Not affected
Vulnerability L1tf:            Not affected
Vulnerability Mds:             Not affected
Vulnerability Meltdown:        Not affected
Vulnerability Mmio stale data: Not affected
Vulnerability Reg file data sampling: Not affected
Vulnerability Retbleed:        Not affected
Vulnerability Spec rstack overflow: Not affected
Vulnerability Spec store bypass: Mitigation; Speculative Store Bypass disabled via prctl
Vulnerability Spectre v1:       Mitigation; usercopy/swaps barriers and __user pointer sanitization
Vulnerability Spectre v2:       Mitigation; Enhanced / Automatic IBRS; IBPB conditional; RSB filling;
                               PBRSE-eIBRS Not affected; BHI BHI_DIS_S
Vulnerability Srbds:           Not affected
Vulnerability Tsx async abort:  Not affected

```

(Continued on next page)



SPEC CPU®2026 Floating Point Rate Result

Copyright 2026 Standard Performance Evaluation Corporation

IEIT Systems Co., Ltd.

SPECrate®2026_fp_base = 746

meta brain NF5280G8 (Intel Xeon 6787P)

SPECrate®2026_fp_peak = 761

CPU2026 License: 3358

Test Date: May-2026

Test Sponsor: IEIT Systems Co., Ltd.

Hardware Availability: Apr-2025

Tested by: IEIT Systems Co., Ltd.

Software Availability: Mar-2026

Platform Notes (Continued)

From lscpu --cache:

NAME	ONE-SIZE	ALL-SIZE	WAYS	TYPE	LEVEL	SETS	PHY-LINE	COHERENCY-SIZE
L1d	48K	8.1M	12	Data	1	64	1	64
L1i	64K	10.8M	16	Instruction	1	64	1	64
L2	2M	344M	16	Unified	2	2048	1	64
L3	336M	672M	16	Unified	3	344064	1	64

8. numactl --hardware

NOTE: a numactl 'node' might or might not correspond to a physical chip.

```

available: 4 nodes (0-3)
node 0 cpus: 0-42,172-214
node 0 size: 257398 MB
node 0 free: 237409 MB
node 1 cpus: 43-85,215-257
node 1 size: 258025 MB
node 1 free: 238438 MB
node 2 cpus: 86-128,258-300
node 2 size: 257986 MB
node 2 free: 238400 MB
node 3 cpus: 129-171,301-343
node 3 size: 257562 MB
node 3 free: 238026 MB
node distances:
node  0  1  2  3
 0:  10 12 21 21
 1:  12 10 21 21
 2:  21 21 10 12
 3:  21 21 12 10

```

9. /proc/meminfo

MemTotal: 1055715876 kB

10. who -r

run-level 3 May 6 13:57

11. Systemd service manager version: systemd 254 (254.24+suse.148.g83b9060b6e)

```

Default Target Status
multi-user      running

```

12. Services, from systemctl list-unit-files

```

STATE UNIT FILES
enabled  armor auditd cron getty@ irqbalance issue-generator kbdsettings kdump kdump-early

```

(Continued on next page)



SPEC CPU®2026 Floating Point Rate Result

Copyright 2026 Standard Performance Evaluation Corporation

IEIT Systems Co., Ltd.

SPECrate®2026_fp_base = 746

meta brain NF5280G8 (Intel Xeon 6787P)

SPECrate®2026_fp_peak = 761

CPU2026 License: 3358

Test Date: May-2026

Test Sponsor: IEIT Systems Co., Ltd.

Hardware Availability: Apr-2025

Tested by: IEIT Systems Co., Ltd.

Software Availability: Mar-2026

Platform Notes (Continued)

```

kdump-notify nvme-fc-boot-connections nvme-autoconnect postfix purge-kernels rollback
systemd-pstore wicked wickedd-auto4 wickedd-dhcp4 wickedd-dhcp6 wickedd-nanny
enabled-runtime systemd-remount-fs
disabled boot-sysctl ca-certificates chrony-wait chronyd console-getty debug-shell
exchange-bmc-os-info fsidd grub2-once haveged ipmievd issue-add-ssh-keys kexec-load
lunmask nfs nfs-blkmap rpcbind rpmconfigcheck serial-getty@ systemd-boot-check-no-failures
systemd-confext systemd-network-generator systemd-sysext systemd-time-wait-sync
systemd-timesyncd tuned
indirect systemd-userdbd wickedd

```

13. Linux kernel boot-time arguments, from /proc/cmdline

```

BOOT_IMAGE=/boot/vmlinuz-6.4.0-150700.51-default
root=UUID=abf2f043-1a11-4e74-925a-2d92d4c037b3
splash=silent
mitigations=auto
quiet
security=apparmor
crashkernel=382M,high
crashkernel=72M,low

```

14. cpupower frequency-info

```

analyzing CPU 93:
  current policy: frequency should be within 800 MHz and 2.00 GHz.
                  The governor "performance" may decide which speed to use
                  within this range.

  boost state support:
    Supported: yes
    Active: yes

```

15. tuned-adm active

Current active profile: throughput-performance

16. sysctl

```

kernel.numa_balancing          1
kernel.randomize_va_space      2
vm.compaction_proactiveness    20
vm.dirty_background_bytes      0
vm.dirty_background_ratio      10
vm.dirty_bytes                 0
vm.dirty_expire_centisecs      3000
vm.dirty_ratio                 40
vm.dirty_writeback_centisecs   500
vm.dirtytime_expire_seconds    43200

```

(Continued on next page)



SPEC CPU®2026 Floating Point Rate Result

Copyright 2026 Standard Performance Evaluation Corporation

IEIT Systems Co., Ltd.

SPECrate®2026_fp_base = 746

meta brain NF5280G8 (Intel Xeon 6787P)

SPECrate®2026_fp_peak = 761

CPU2026 License: 3358

Test Sponsor: IEIT Systems Co., Ltd.

Tested by: IEIT Systems Co., Ltd.

Test Date: May-2026

Hardware Availability: Apr-2025

Software Availability: Mar-2026

Platform Notes (Continued)

```

vm.extfrag_threshold          500
vm.min_unmapped_ratio        1
vm.nr_hugepages               0
vm.nr_hugepages_mempolicy    0
vm.nr_overcommit_hugepages   0
vm.swappiness                 10
vm.watermark_boost_factor    15000
vm.watermark_scale_factor     10
vm.zone_reclaim_mode         0

```

```

-----
17. /sys/kernel/mm/transparent_hugepage
defrag          always defer defer+madvice [madvice] never
enabled         [always] madvice never
hpage_pmd_size 2097152
shmem_enabled   always within_size advise [never] deny force

```

```

-----
18. /sys/kernel/mm/transparent_hugepage/khugepaged
alloc_sleep_millisecs  60000
defrag                 1
max_ptes_none          511
max_ptes_shared        256
max_ptes_swap          64
pages_to_scan          4096
scan_sleep_millisecs  10000

```

```

-----
19. OS release
From /etc/*-release /etc/*-version
os-release SUSE Linux Enterprise Server 15 SP7

```

```

-----
20. Disk information
SPEC is set to: /home/cpu2026
Filesystem      Type  Size  Used Avail Use% Mounted on
/dev/nvme0n1p2  xfs   931G  113G  818G  13% /

```

```

-----
21. /sys/devices/virtual/dmi/id
Vendor:          IEIT SYSTEMS
Product:         NF5280-M8-A0-R0-00
Product Family: Not specified
Serial:          000000000

```

```

-----
22. dmidecode

```

(Continued on next page)



SPEC CPU®2026 Floating Point Rate Result

Copyright 2026 Standard Performance Evaluation Corporation

IEIT Systems Co., Ltd.

SPECrate®2026_fp_base = 746

meta brain NF5280G8 (Intel Xeon 6787P)

SPECrate®2026_fp_peak = 761

CPU2026 License: 3358

Test Sponsor: IEIT Systems Co., Ltd.

Tested by: IEIT Systems Co., Ltd.

Test Date: May-2026

Hardware Availability: Apr-2025

Software Availability: Mar-2026

Platform Notes (Continued)

Additional information from dmidecode 3.6 follows. WARNING: Use caution when you interpret this section. The 'dmidecode' program reads system data which is "intended to allow hardware to be accurately determined", but the intent may not be met, as there are frequent changes to hardware, firmware, and the "DMTF SMBIOS" standard.

Memory:

4x Hynix HMCG94BDJHA380N 64 GB 1 rank 12800, configured at 8000
4x Hynix HMCG94BDJHA383N 64 GB 1 rank 12800, configured at 8000
5x Hynix HMCG94BDJHA462N 64 GB 1 rank 12800, configured at 8000
3x Hynix HMCG94BDJHA464N 64 GB 1 rank 12800, configured at 8000

23. BIOS

(This section combines info from /sys/devices and dmidecode.)

BIOS Vendor: American Megatrends International, LLC.
BIOS Version: 04.01.00
BIOS Date: 12/17/2025

Compiler Version Notes

=====
C | 782.lbm_r(base, peak)
=====

Intel(R) oneAPI DPC++/C++ Compiler for applications running on Intel(R) 64,
Version 2026.0.0 Build 20260331
Copyright (C) 1985-2026 Intel Corporation. All rights reserved.
=====

=====
C++ | 731.astcenc_r(base, peak) 736.ocio_r(base, peak)
| 748.flightdm_r(base, peak) 766.femflow_r(base, peak)
| 767.nest_r(base, peak) 772.marian_r(base, peak)
=====

Intel(R) oneAPI DPC++/C++ Compiler for applications running on Intel(R) 64,
Version 2026.0.0 Build 20260331
Copyright (C) 1985-2026 Intel Corporation. All rights reserved.
=====

=====
C++, C | 709.cactus_r(base, peak) 737.gmsh_r(base, peak)
=====

Intel(R) oneAPI DPC++/C++ Compiler for applications running on Intel(R) 64,
Version 2026.0.0 Build 20260331
Copyright (C) 1985-2026 Intel Corporation. All rights reserved.
=====

(Continued on next page)



SPEC CPU®2026 Floating Point Rate Result

Copyright 2026 Standard Performance Evaluation Corporation

IEIT Systems Co., Ltd.

SPECrate®2026_fp_base = 746

meta brain NF5280G8 (Intel Xeon 6787P)

SPECrate®2026_fp_peak = 761

CPU2026 License: 3358

Test Date: May-2026

Test Sponsor: IEIT Systems Co., Ltd.

Hardware Availability: Apr-2025

Tested by: IEIT Systems Co., Ltd.

Software Availability: Mar-2026

Compiler Version Notes (Continued)

```

=====
Fortran | 722.palm_r(base, peak) 749.fotonik3d_r(base, peak) 765.roms_r(base,
| peak)
=====

```

Intel(R) Fortran Compiler for applications running on Intel(R) 64, Version

2026.0.0 Build 20260331

Copyright (C) 1985-2026 Intel Corporation. All rights reserved.

Base Compiler Invocation

C benchmarks:

icx

C++ benchmarks:

icpx

Fortran benchmarks:

ifx

Benchmarks using both C and C++:

icpx icx

Base Portability Flags

737.gmsh_r: -fno-associative-math

Base Optimization Flags

C benchmarks:

```

-m64 -std=c18 -Wl,-z,muldefs -Wl,-plugin-opt=-inline-threshold=1500
-xsapphirerapids -mprefer-vector-width=512 -O3 -ffp-model=fast -flto
-mfpmath=sse -funroll-loops -qopt-mem-layout-trans=4
-L/usr/local/jemalloc-5.3.0/lib -ljemalloc

```

C++ benchmarks:

```

-m64 -std=c++17 -Wl,-z,muldefs -Wl,-plugin-opt=-inline-threshold=1500
-xsapphirerapids -mprefer-vector-width=512 -O3 -ffp-model=fast -flto
-mfpmath=sse -funroll-loops -qopt-mem-layout-trans=4
-L/usr/local/jemalloc-5.3.0/lib -ljemalloc

```

(Continued on next page)



SPEC CPU®2026 Floating Point Rate Result

Copyright 2026 Standard Performance Evaluation Corporation

IEIT Systems Co., Ltd.

SPECrate®2026_fp_base = 746

meta brain NF5280G8 (Intel Xeon 6787P)

SPECrate®2026_fp_peak = 761

CPU2026 License: 3358

Test Sponsor: IEIT Systems Co., Ltd.

Tested by: IEIT Systems Co., Ltd.

Test Date: May-2026

Hardware Availability: Apr-2025

Software Availability: Mar-2026

Base Optimization Flags (Continued)

Fortran benchmarks:

```
-m64 -stand f18 -Wl,-z,muldefs -Wl,-plugin-opt=-inline-threshold=1500
-xsaphirerapids -mprefer-vector-width=512 -O3 -ffp-model=fast -flto
-mfpmath=sse -funroll-loops -qopt-mem-layout-trans=4
-nostandard-realloc-lhs -align array32byte -auto
-L/usr/local/jemalloc-5.3.0/lib -ljemalloc
```

Benchmarks using both C and C++:

```
-m64 -std=c++17 -std=c18 -Wl,-z,muldefs
-Wl,-plugin-opt=-inline-threshold=1500 -xsaphirerapids
-mprefer-vector-width=512 -O3 -ffp-model=fast -flto -mfpmath=sse
-funroll-loops -qopt-mem-layout-trans=4 -L/usr/local/jemalloc-5.3.0/lib
-ljemalloc
```

Peak Compiler Invocation

C benchmarks:

```
icx
```

C++ benchmarks:

```
icpx
```

Fortran benchmarks:

```
ifx
```

Benchmarks using both C and C++:

```
icpx icx
```

Peak Portability Flags

```
737.gmsh_r: -fno-associative-math
```

Peak Optimization Flags

C benchmarks:

```
782.lbm_r: basepeak = yes
```

C++ benchmarks:

(Continued on next page)



SPEC CPU®2026 Floating Point Rate Result

Copyright 2026 Standard Performance Evaluation Corporation

IEIT Systems Co., Ltd.

SPECrate®2026_fp_base = 746

meta brain NF5280G8 (Intel Xeon 6787P)

SPECrate®2026_fp_peak = 761

CPU2026 License: 3358

Test Sponsor: IEIT Systems Co., Ltd.

Tested by: IEIT Systems Co., Ltd.

Test Date: May-2026

Hardware Availability: Apr-2025

Software Availability: Mar-2026

Peak Optimization Flags (Continued)

```
731.astcenc_r: -m64 -std=c++17 -Wl,-z,muldefs
-Wl,-plugin-opt=-inline-threshold=1500
-fprofile-generate(pass 1)
-fprofile-use=default.profddata(pass 2) -xHost(pass 1)
-ffp-model=fast -xsaphirerapids(pass 2) -flto
-mprefer-vector-width=512 -qopt-mem-layout-trans=4 -O3
-mfpmath=sse -funroll-loops
-L/usr/local/jemalloc-5.3.0/lib -ljemalloc
```

736.ocio_r: basepeak = yes

748.flightdm_r: Same as 731.astcenc_r

766.femflow_r: basepeak = yes

767.nest_r: Same as 731.astcenc_r

772.marian_r: basepeak = yes

Fortran benchmarks:

722.palm_r: basepeak = yes

749.fotonik3d_r: basepeak = yes

765.roms_r: basepeak = yes

Benchmarks using both C and C++:

709.cactus_r: basepeak = yes

```
737.gmsh_r: -m64 -std=c++17 -std=c18 -Wl,-z,muldefs
-Wl,-plugin-opt=-inline-threshold=1500
-fprofile-generate(pass 1)
-fprofile-use=default.profddata(pass 2) -xHost(pass 1)
-ffp-model=fast -xsaphirerapids(pass 2) -flto
-mprefer-vector-width=512 -qopt-mem-layout-trans=4 -O3
-mfpmath=sse -funroll-loops
-L/usr/local/jemalloc-5.3.0/lib -ljemalloc
```

The flags files that were used to format this result can be browsed at

<http://www.spec.org/cpu2026/results/flags/Intel-ic2026-official-linux64-v1.1.html>

<http://www.spec.org/cpu2026/results/flags/IEIT-Platform-Settings-intel-V2.0.html>



SPEC CPU®2026 Floating Point Rate Result

Copyright 2026 Standard Performance Evaluation Corporation

IEIT Systems Co., Ltd.

SPECrate®2026_fp_base = 746

meta brain NF5280G8 (Intel Xeon 6787P)

SPECrate®2026_fp_peak = 761

CPU2026 License: 3358

Test Sponsor: IEIT Systems Co., Ltd.

Tested by: IEIT Systems Co., Ltd.

Test Date: May-2026

Hardware Availability: Apr-2025

Software Availability: Mar-2026

You can also download the XML flags sources by saving the following links:

<http://www.spec.org/cpu2026/results/flags/Intel-ic2026-official-linux64-v1.1.xml>

<http://www.spec.org/cpu2026/results/flags/IEIT-Platform-Settings-intel-V2.0.xml>

SPEC CPU and SPECrate are registered trademarks of the Standard Performance Evaluation Corporation. All other brand and product names appearing in this result are trademarks or registered trademarks of their respective holders.

For questions about this result, please contact the tester. For other inquiries, please contact info@spec.org.

Tested with SPEC CPU®2026 v1.0.1 on 2026-05-21 04:30:32-0400.

Report generated on 2026-06-16 17:18:57 by CPU2026 PDF formatter (unknown).

Originally published on 2026-06-16.