



SPEC CPU®2026 Floating Point Rate Result

Copyright 2026 Standard Performance Evaluation Corporation

Lenovo Global Technology

SPECrate®2026_fp_base = 507

ThinkSystem SR650 V3
(1.90 GHz, Intel Xeon Platinum 8592+)

SPECrate®2026_fp_peak = Not Run

CPU2026 License: 9017

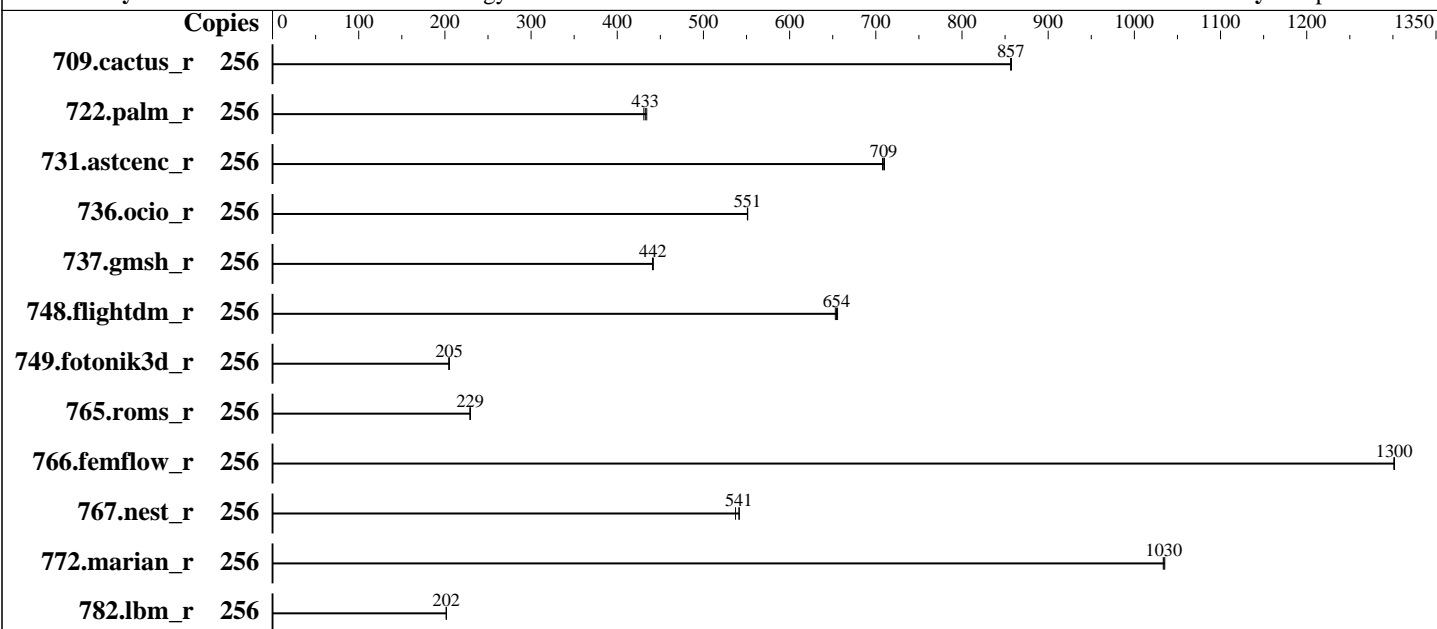
Test Date: May-2026

Test Sponsor: Lenovo Global Technology

Hardware Availability: Feb-2024

Tested by: Lenovo Global Technology

Software Availability: Apr-2026



Hardware

CPU Name: Intel Xeon Platinum 8592+
 Max MHz: 3900
 Nominal: 1900
 Enabled: 128 cores, 2 chips, 2 threads/core
 Orderable: 1,2 chips
 Cache L1: 32 KB I + 48 KB D on chip per core
 L2: 2 MB I+D on chip per core
 L3: 320 MB I+D on chip per chip
 Other: None
 Memory: 512 GB (16 x 32 GB 2Rx8 PC5-5600B-R)
 Storage: 1 x 480 GB SATA SSD
 Cooling: Air
 Other: None

Software

OS: SUSE Linux Enterprise Server 16.0
 Kernel 6.12.0-160000.5-default
 Compiler: C/C++: Version 2026.0 of Intel oneAPI DPC++/C++ Compiler for Linux;
 Fortran: Version 2026.0 of Intel Fortran Compiler for Linux
 Compiler Category: Vendor
 Firmware: Lenovo BIOS Version ESE139E 3.90 released May-2026
 File System: btrfs
 System State: Run level 3 (multi-user)
 Base Pointers: 64-bit
 Peak Pointers: Not Applicable
 Other: tcmalloc memory allocator v2.18.1
 Power Management: BIOS and OS set to prefer performance at the cost of additional power usage



SPEC CPU®2026 Floating Point Rate Result

Copyright 2026 Standard Performance Evaluation Corporation

Lenovo Global Technology

SPECrate®2026_fp_base = 507

ThinkSystem SR650 V3
(1.90 GHz, Intel Xeon Platinum 8592+)

SPECrate®2026_fp_peak = Not Run

CPU2026 License: 9017
Test Sponsor: Lenovo Global Technology
Tested by: Lenovo Global Technology

Test Date: May-2026
Hardware Availability: Feb-2024
Software Availability: Apr-2026

Results Table

Benchmark	Base							Peak						
	Copies	Seconds	Ratio	Seconds	Ratio	Seconds	Ratio	Copies	Seconds	Ratio	Seconds	Ratio	Seconds	Ratio
709.cactus_r	256	256	857	256	857	256	857							
722.palm_r	256	784	431	781	433	778	434							
731.ascenc_r	256	303	710	303	709	304	708							
736.ocio_r	256	407	551	406	551	406	551							
737.gmsh_r	256	266	442	266	442	267	441							
748.flightdm_r	256	280	654	281	653	280	656							
749.fotonik3d_r	256	1444	205	1447	205	1443	205							
765.roms_r	256	1756	230	1759	229	1759	229							
766.femflow_r	256	288	1300	289	1300	289	1300							
767.nest_r	256	375	541	375	542	378	537							
772.marian_r	256	391	1030	390	1040	391	1030							
782.lbm_r	256	728	202	727	202	727	202							

SPECrate®2026_fp_base = 507

SPECrate®2026_fp_peak = Not Run

Results appear in the order in which they were run. Bold underlined text indicates a median measurement.

Submit Notes

The numactl mechanism was used to bind copies to processors. The config file option 'submit' was used to generate numactl commands to bind each copy to a specific processor. For details, please see the config file.

Operating System Notes

Stack size set to unlimited using "ulimit -s unlimited"

Environment Variables Notes

Environment variables set by runcpu before the start of the run:
LD_LIBRARY_PATH = "/home/cpu2026-1.0.1-ic2026.0-rate/lib"

General Notes

Binaries compiled on a system with 2x Intel Xeon Platinum 8280M CPU + 384GB RAM memory using CentOS Stream 9.
Transparent Huge Pages enabled by default
Prior to runcpu invocation
Filesystem page cache synced and cleared with:
sync; echo 3> /proc/sys/vm/drop_caches
runcpu command invoked through numactl i.e.:

(Continued on next page)



SPEC CPU®2026 Floating Point Rate Result

Copyright 2026 Standard Performance Evaluation Corporation

Lenovo Global Technology

SPECrate®2026_fp_base = 507

ThinkSystem SR650 V3
(1.90 GHz, Intel Xeon Platinum 8592+)

SPECrate®2026_fp_peak = Not Run

CPU2026 License: 9017

Test Date: May-2026

Test Sponsor: Lenovo Global Technology

Hardware Availability: Feb-2024

Tested by: Lenovo Global Technology

Software Availability: Apr-2026

General Notes (Continued)

numactl --interleave=all runcpu <etc>

NA: The test sponsor attests, as of date of publication, that CVE-2017-5754 (Meltdown) is mitigated in the system as tested and documented.

Yes: The test sponsor attests, as of date of publication, that CVE-2017-5753 (Spectre variant 1) is mitigated in the system as tested and documented.

Yes: The test sponsor attests, as of date of publication, that CVE-2017-5715 (Spectre variant 2) is mitigated in the system as tested and documented.

tcmalloc, a fast, multithreaded malloc implementation

built with the CentOS Stream 9, and the system compiler gcc 11.5.0

sources available from github.com/gperftools/gperftools

Platform Notes

BIOS configuration:

Choose Operating Mode set to Maximum Performance and then set it to Custom Mode

SNC set to SNC2

Misc set to Option4

sysinfo program /home/cpu2026-1.0.1-ic2026.0-rate/bin/sysinfo

Rev: 779ab21020787073335a329f3a45e2cd

running on localhost Wed May 27 20:51:01 2026

SUT (System Under Test) info as seen by some common utilities.

Table of contents

1. uname -srvm
2. w
3. Username
4. ulimit -a
5. sysinfo process ancestry
6. /proc/cpuinfo
7. lscpu
8. numactl --hardware
9. /proc/meminfo
10. Systemd service manager version: systemd 257 (257.7+suse.19.ga0dfd5de4c)
11. Services, from systemctl list-unit-files
12. Linux kernel boot-time arguments, from /proc/cmdline
13. cpupower frequency-info
14. sysctl
15. /sys/kernel/mm/transparent_hugepage
16. /sys/kernel/mm/transparent_hugepage/khugepaged
17. OS release
18. Disk information
19. /sys/devices/virtual/dmi/id

(Continued on next page)



SPEC CPU®2026 Floating Point Rate Result

Copyright 2026 Standard Performance Evaluation Corporation

Lenovo Global Technology

SPECrate®2026_fp_base = 507

ThinkSystem SR650 V3
(1.90 GHz, Intel Xeon Platinum 8592+)

SPECrate®2026_fp_peak = Not Run

CPU2026 License: 9017

Test Date: May-2026

Test Sponsor: Lenovo Global Technology

Hardware Availability: Feb-2024

Tested by: Lenovo Global Technology

Software Availability: Apr-2026

Platform Notes (Continued)

20. dmidecode
21. BIOS

1. uname -srvm
Linux 6.12.0-160000.5-default #1 SMP PREEMPT_DYNAMIC Wed Sep 10 15:26:25 UTC 2025 (3545bbd) x86_64

2. w
20:51:01 up 9 min, 1 user, load average: 0.19, 0.33, 0.23
USER TTY FROM LOGIN@ IDLE JCPU PCPU WHAT
root 172.30.81.13 20:50 0.00s 0.03s sshd-session: root [priv]

3. Username
From environment variable \$USER: root

4. ulimit -a
real-time non-blocking time (microseconds, -R) unlimited
core file size (blocks, -c) unlimited
data seg size (kbytes, -d) unlimited
scheduling priority (-e) 0
file size (blocks, -f) unlimited
pending signals (-i) 2061253
max locked memory (kbytes, -l) 8192
max memory size (kbytes, -m) unlimited
open files (-n) 1024
pipe size (512 bytes, -p) 8
POSIX message queues (bytes, -q) 819200
real-time priority (-r) 0
stack size (kbytes, -s) unlimited
cpu time (seconds, -t) unlimited
max user processes (-u) 2061253
virtual memory (kbytes, -v) unlimited
file locks (-x) unlimited

5. sysinfo process ancestry
/usr/lib/systemd/systemd --switched-root --system --deserialize=47
sshd: /usr/sbin/sshd -D [listener] 0 of 10-100 startups
sshd-session: root [priv]
sshd-session: root@notty
/bin/bash ./02.remote_local_SPECcpu_1.02.sh
sh Run503-compliant-ic2026.0-lin-sapphirerapids-ratefp-base-smt-on-20260429_revB.sh
runcpu --nobuild --iterations=3 --reportable --action validate --define default-platform-flags --copies 256

(Continued on next page)



SPEC CPU®2026 Floating Point Rate Result

Copyright 2026 Standard Performance Evaluation Corporation

Lenovo Global Technology

SPECrate®2026_fp_base = 507

ThinkSystem SR650 V3
(1.90 GHz, Intel Xeon Platinum 8592+)

SPECrate®2026_fp_peak = Not Run

CPU2026 License: 9017

Test Date: May-2026

Test Sponsor: Lenovo Global Technology

Hardware Availability: Feb-2024

Tested by: Lenovo Global Technology

Software Availability: Apr-2026

Platform Notes (Continued)

```
-c ic2026.0-sapphirerapids-cpu2026-1.0.1-rate-20260429_revB.cfg --define smt-on --define cores=128
--define physicalfirst --define invoke_with_interleave --define drop_caches --tune base -o all fprate
runcpu --nobuild --iterations 3 --reportable --action validate --define default-platform-flags --copies 256
--configfile ic2026.0-sapphirerapids-cpu2026-1.0.1-rate-20260429_revB.cfg --define smt-on --define
cores=128 --define physicalfirst --define invoke_with_interleave --define drop_caches --tune base
--output_format all --nopower --runmode rate --tune base --size refrate fprate --nopreenv --note-preenv
--logfile $SPEC/tmp/CPU2026.002/templogs/preenv.fprate.002.0.log --lognum 002.0 --from_runcpu 2
specperl $SPEC/bin/sysinfo
$SPEC = /home/cpu2026-1.0.1-ic2026.0-rate
```

6. /proc/cpuinfo

```
model name      : INTEL(R) XEON(R) PLATINUM 8592+
vendor_id      : GenuineIntel
cpu family     : 6
model          : 207
stepping       : 2
microcode      : 0x210002d3
bugs           : spectre_v1 spectre_v2 spec_store_bypass swapgs eibrs_pbrsb bhi spectre_v2_user
cpu cores      : 64
siblings       : 128
2 physical ids (chips)
256 processors (hardware threads)
physical id 0: core ids 0-63
physical id 1: core ids 0-63
physical id 0: apicids 0-127
physical id 1: apicids 128-255
```

Caution: /proc/cpuinfo data regarding chips, cores, and threads is not necessarily reliable, especially for virtualized systems. Use the above data carefully.

7. lscpu

From lscpu from util-linux 2.41.1:

```
Architecture:          x86_64
CPU op-mode(s):        32-bit, 64-bit
Address sizes:         46 bits physical, 57 bits virtual
Byte Order:            Little Endian
CPU(s):                256
On-line CPU(s) list:   0-255
Vendor ID:             GenuineIntel
Model name:            INTEL(R) XEON(R) PLATINUM 8592+
CPU family:            6
Model:                 207
Thread(s) per core:    2
Core(s) per socket:    64
Socket(s):             2
```

(Continued on next page)



SPEC CPU®2026 Floating Point Rate Result

Copyright 2026 Standard Performance Evaluation Corporation

Lenovo Global Technology

SPECrate®2026_fp_base = 507

ThinkSystem SR650 V3
(1.90 GHz, Intel Xeon Platinum 8592+)

SPECrate®2026_fp_peak = Not Run

CPU2026 License: 9017

Test Date: May-2026

Test Sponsor: Lenovo Global Technology

Hardware Availability: Feb-2024

Tested by: Lenovo Global Technology

Software Availability: Apr-2026

Platform Notes (Continued)

```

Stepping:                2
CPU(s) scaling MHz:     21%
CPU max MHz:            3900.0000
CPU min MHz:            800.0000
BogoMIPS:               3800.00
Flags:                   fpu vme de pse tsc msr pae mce cx8 apic sep mtrr pge mca cmov pat
                        pse36 clflush dts acpi mmx fxsr sse sse2 ss ht tm pbe syscall nx
                        pdpegb rdtscp lm constant_tsc art arch_perfmon pebs bts rep_good
                        nopl xtopology nonstop_tsc cpuid aperfmperf tsc_known_freq pni
                        pclmulqdq dtes64 ds_cpl smx est tm2 ssse3 sdbg fma cx16 xtpr pdcm
                        pcid dca sse4_1 sse4_2 x2apic movbe popcnt tsc_deadline_timer aes
                        xsave avx f16c rdrand lahf_lm abm 3dnowprefetch cpuid_fault epb
                        cat_l3 cat_l2 cdp_l3 intel_ppin cdp_l2 ssbd mba ibrs ibpb stibp
                        ibrs_enhanced fsgsbase tsc_adjust bmi1 avx2 smep bmi2 erms invpcid
                        cqm rdt_a avx512f avx512dq rdseed adx smap avx512ifma clflushopt
                        clwb intel_pt avx512cd sha_ni avx512bw avx512vl xsaveopt xsavec
                        xgetbv1 xsaves cqm_llc cqm_occup_llc cqm_mbm_total cqm_mbm_local
                        split_lock_detect user_shstk avx_vnni avx512_bf16 wbnoinvd dtherm
                        ida arat pln pts avx512vbmi umip pku ospke waitpkg avx512_vbmi2
                        gfni vaes vpclmulqdq avx512_vnni avx512_bitalg avx512_vpopcntdq
                        la57 rdpid bus_lock_detect cldemote movdiri movdir64b enqcmd fsrm
                        md_clear serialize tsxldtrk pconfig arch_lbr ibt amx_bf16
                        avx512_fp16 amx_tile amx_int8 flush_l1d arch_capabilities

L1d cache:              6 MiB (128 instances)
L1i cache:              4 MiB (128 instances)
L2 cache:               256 MiB (128 instances)
L3 cache:               640 MiB (2 instances)
NUMA node(s):          4
NUMA node0 CPU(s):     0-31,128-159
NUMA node1 CPU(s):     32-63,160-191
NUMA node2 CPU(s):     64-95,192-223
NUMA node3 CPU(s):     96-127,224-255
Vulnerability Gather data sampling: Not affected
Vulnerability Indirect target selection: Not affected
Vulnerability Itlb multihit: Not affected
Vulnerability L1tf: Not affected
Vulnerability Mds: Not affected
Vulnerability Meltdown: Not affected
Vulnerability Mmio stale data: Not affected
Vulnerability Reg file data sampling: Not affected
Vulnerability Retbleed: Not affected
Vulnerability Spec rstack overflow: Not affected
Vulnerability Spec store bypass: Mitigation; Speculative Store Bypass disabled via prctl
Vulnerability Spectre v1: Mitigation; usercopy/swaps barriers and __user pointer
                        sanitization
Vulnerability Spectre v2: Mitigation; Enhanced / Automatic IBRS; IBPB conditional;
                        PBR SB-eIBRS SW sequence; BHI BHI_DIS_S

```

(Continued on next page)



SPEC CPU®2026 Floating Point Rate Result

Copyright 2026 Standard Performance Evaluation Corporation

Lenovo Global Technology

SPECrate®2026_fp_base = 507

ThinkSystem SR650 V3
(1.90 GHz, Intel Xeon Platinum 8592+)

SPECrate®2026_fp_peak = Not Run

CPU2026 License: 9017

Test Date: May-2026

Test Sponsor: Lenovo Global Technology

Hardware Availability: Feb-2024

Tested by: Lenovo Global Technology

Software Availability: Apr-2026

Platform Notes (Continued)

Vulnerability Srbds:	Not affected
Vulnerability Tsa:	Not affected
Vulnerability Tsx async abort:	Not affected

From lscpu --cache:

NAME	ONE-SIZE	ALL-SIZE	WAYS	TYPE	LEVEL	SETS	PHY-LINE	COHERENCY-SIZE
L1d	48K	6M	12	Data	1	64	1	64
L1i	32K	4M	8	Instruction	1	64	1	64
L2	2M	256M	16	Unified	2	2048	1	64
L3	320M	640M	20	Unified	3	262144	1	64

8. numactl --hardware

NOTE: a numactl 'node' might or might not correspond to a physical chip.

```

available: 4 nodes (0-3)
node 0 cpus: 0-31,128-159
node 0 size: 128664 MB
node 0 free: 127979 MB
node 1 cpus: 32-63,160-191
node 1 size: 129000 MB
node 1 free: 128053 MB
node 2 cpus: 64-95,192-223
node 2 size: 128959 MB
node 2 free: 128288 MB
node 3 cpus: 96-127,224-255
node 3 size: 128923 MB
node 3 free: 128322 MB
node distances:
node    0    1    2    3
  0:   10   12   21   21
  1:   12   10   21   21
  2:   21   21   10   12
  3:   21   21   12   10

```

9. /proc/meminfo

MemTotal: 527920928 kB

'who -r' did not return a run level

10. Systemd service manager version: systemd 257 (257.7+suse.19.ga0dfd5de4c)

Default Target	Status
graphical	running

11. Services, from systemctl list-unit-files

(Continued on next page)



SPEC CPU®2026 Floating Point Rate Result

Copyright 2026 Standard Performance Evaluation Corporation

Lenovo Global Technology

SPECrate®2026_fp_base = 507

ThinkSystem SR650 V3
(1.90 GHz, Intel Xeon Platinum 8592+)

SPECrate®2026_fp_peak = Not Run

CPU2026 License: 9017

Test Date: May-2026

Test Sponsor: Lenovo Global Technology

Hardware Availability: Feb-2024

Tested by: Lenovo Global Technology

Software Availability: Apr-2026

Platform Notes (Continued)

STATE	UNIT FILES
enabled	NetworkManager NetworkManager-dispatcher NetworkManager-wait-online audit-rules auditd chronyd dbus-broker firewalld getty@ irqbalance issue-generator kbdsettings klog lvm2-monitor rollback rsyslog smartd soft-reboot-cleanup sshd systemd-pstore wpa_supplicant wtmpdb-update-boot
enabled-runtime	systemd-remount-fs
disabled	blk-availability boot-sysctl ca-certificates ca-certificates-setup chrony-wait console-getty debug-shell dnsmasq exchange-bmc-os-info gpm grub2-once ipmiev issue-add-ssh-keys kernel-sysctl kexec-load lastlog2-import lunmask lvm-devices-import man-db-create multipathd nftables nis-domainname rpmconfigcheck rsyncd serial-getty@ setup-systemd-proxy-env smartd_generate_opts snmpd snmptrapd systemd-boot-check-no-failures systemd-confext systemd-network-generator systemd-sysext systemd-time-wait-sync systemd-timesyncd systemd-udev-load-credentials udisks2 wpa_supplicant@
indirect	systemd-userdbd

12. Linux kernel boot-time arguments, from /proc/cmdline

```
BOOT_IMAGE=/boot/vmlinuz-6.12.0-160000.5-default
root=UUID=947e53e0-d208-4ab7-9188-9ca936e60a3f
mitigations=auto
quiet
security=selinux
selinux=1
```

13. cpupower frequency-info

```
analyzing CPU 162:
  current policy: frequency should be within 800 MHz and 3.90 GHz.
                  The governor "performance" may decide which speed to use
                  within this range.

boost state support:
  Supported: yes
  Active: yes
```

14. sysctl

kernel.numa_balancing	1
kernel.randomize_va_space	2
vm.compaction_proactiveness	20
vm.dirty_background_bytes	0
vm.dirty_background_ratio	10
vm.dirty_bytes	0
vm.dirty_expire_centisecs	3000
vm.dirty_ratio	20
vm.dirty_writeback_centisecs	500
vm.dirtytime_expire_seconds	43200

(Continued on next page)



SPEC CPU®2026 Floating Point Rate Result

Copyright 2026 Standard Performance Evaluation Corporation

Lenovo Global Technology

SPECrate®2026_fp_base = 507

ThinkSystem SR650 V3
(1.90 GHz, Intel Xeon Platinum 8592+)

SPECrate®2026_fp_peak = Not Run

CPU2026 License: 9017

Test Date: May-2026

Test Sponsor: Lenovo Global Technology

Hardware Availability: Feb-2024

Tested by: Lenovo Global Technology

Software Availability: Apr-2026

Platform Notes (Continued)

```

vm.extfrag_threshold          500
vm.min_unmapped_ratio        1
vm.nr_hugepages               0
vm.nr_hugepages_mempolicy    0
vm.nr_overcommit_hugepages   0
vm.swappiness                 60
vm.watermark_boost_factor    15000
vm.watermark_scale_factor    10
vm.zone_reclaim_mode         0

```

```

-----
15. /sys/kernel/mm/transparent_hugepage
defrag          always defer defer+madvice [madvice] never
enabled         [always] madvice never
hpage_pmd_size 2097152
shmem_enabled   always within_size advise [never] deny force

```

```

-----
16. /sys/kernel/mm/transparent_hugepage/khugepaged
alloc_sleep_millisecs  60000
defrag                 1
max_ptes_none          511
max_ptes_shared        256
max_ptes_swap          64
pages_to_scan          4096
scan_sleep_millisecs   10000

```

```

-----
17. OS release
From /etc/*-release /etc/*-version
os-release SUSE Linux Enterprise Server 16.0

```

```

-----
18. Disk information
SPEC is set to: /home/cpu2026-1.0.1-ic2026.0-rate
Filesystem      Type  Size  Used Avail Use% Mounted on
/dev/sda2       btrfs 445G  170G  276G  39% /home

```

```

-----
19. /sys/devices/virtual/dmi/id
Vendor:          Lenovo
Product:         ThinkSystem SR650 V3 MB,EGS,DDR5,SH,2U
Product Family: ThinkSystem
Serial:          1234567890

```

```

-----
20. dmidecode

```

(Continued on next page)



SPEC CPU®2026 Floating Point Rate Result

Copyright 2026 Standard Performance Evaluation Corporation

Lenovo Global Technology

ThinkSystem SR650 V3
(1.90 GHz, Intel Xeon Platinum 8592+)

SPECrate®2026_fp_base = 507

SPECrate®2026_fp_peak = Not Run

CPU2026 License: 9017
Test Sponsor: Lenovo Global Technology
Tested by: Lenovo Global Technology

Test Date: May-2026
Hardware Availability: Feb-2024
Software Availability: Apr-2026

Platform Notes (Continued)

Additional information from dmidecode 3.6 follows. **WARNING:** Use caution when you interpret this section. The 'dmidecode' program reads system data which is "intended to allow hardware to be accurately determined", but the intent may not be met, as there are frequent changes to hardware, firmware, and the "DMTF SMBIOS" standard.

Memory:

16x Samsung M321R4GA3PB0-CWMXH 32 GB 2 rank 5600

21. BIOS

(This section combines info from /sys/devices and dmidecode.)

BIOS Vendor: Lenovo
BIOS Version: ESE139E-3.90
BIOS Date: 05/07/2026
BIOS Revision: 3.90
Firmware Revision: 8.10

Compiler Version Notes

=====
C | 782.lbm_r(base)

Intel(R) oneAPI DPC++/C++ Compiler for applications running on Intel(R) 64,
Version 2026.0.0 Build 20260331
Copyright (C) 1985-2026 Intel Corporation. All rights reserved.

=====
C++ | 731.astcenc_r(base) 736.ocio_r(base) 748.flightdm_r(base)
766.femflow_r(base) 767.nest_r(base) 772.marian_r(base)

Intel(R) oneAPI DPC++/C++ Compiler for applications running on Intel(R) 64,
Version 2026.0.0 Build 20260331
Copyright (C) 1985-2026 Intel Corporation. All rights reserved.

=====
C++, C | 709.cactus_r(base) 737.gmsh_r(base)

Intel(R) oneAPI DPC++/C++ Compiler for applications running on Intel(R) 64,
Version 2026.0.0 Build 20260331
Copyright (C) 1985-2026 Intel Corporation. All rights reserved.

=====
Fortran | 722.palm_r(base) 749.fotonik3d_r(base) 765.roms_r(base)

(Continued on next page)



SPEC CPU®2026 Floating Point Rate Result

Copyright 2026 Standard Performance Evaluation Corporation

Lenovo Global Technology

SPECrate®2026_fp_base = 507

ThinkSystem SR650 V3
(1.90 GHz, Intel Xeon Platinum 8592+)

SPECrate®2026_fp_peak = Not Run

CPU2026 License: 9017

Test Date: May-2026

Test Sponsor: Lenovo Global Technology

Hardware Availability: Feb-2024

Tested by: Lenovo Global Technology

Software Availability: Apr-2026

Compiler Version Notes (Continued)

Intel(R) Fortran Compiler for applications running on Intel(R) 64, Version
2026.0.0 Build 20260331

Copyright (C) 1985-2026 Intel Corporation. All rights reserved.

Base Compiler Invocation

C benchmarks:

icx

C++ benchmarks:

icpx

Fortran benchmarks:

ifx

Benchmarks using both C and C++:

icpx icx

Base Portability Flags

737.gmsh_r: -fno-associative-math

Base Optimization Flags

C benchmarks:

-m64 -std=c18 -Wl,-z,muldefs -Wl,-plugin-opt=-inline-threshold=1500
-xsapphirerapids -mprefer-vector-width=512 -O3 -ffp-model=fast -flto
-mfpmath=sse -funroll-loops -qopt-mem-layout-trans=4
-L/usr/local/tcmalloc-2.18.1/lib -ltcmalloc_minimal

C++ benchmarks:

-m64 -std=c++17 -Wl,-z,muldefs -Wl,-plugin-opt=-inline-threshold=1500
-xsapphirerapids -mprefer-vector-width=512 -O3 -ffp-model=fast -flto
-mfpmath=sse -funroll-loops -qopt-mem-layout-trans=4
-L/usr/local/tcmalloc-2.18.1/lib -ltcmalloc_minimal

Fortran benchmarks:

-m64 -stand f18 -Wl,-z,muldefs -Wl,-plugin-opt=-inline-threshold=1500
-xsapphirerapids -mprefer-vector-width=512 -O3 -ffp-model=fast -flto

(Continued on next page)



SPEC CPU®2026 Floating Point Rate Result

Copyright 2026 Standard Performance Evaluation Corporation

Lenovo Global Technology

SPECrate®2026_fp_base = 507

ThinkSystem SR650 V3
(1.90 GHz, Intel Xeon Platinum 8592+)

SPECrate®2026_fp_peak = Not Run

CPU2026 License: 9017

Test Date: May-2026

Test Sponsor: Lenovo Global Technology

Hardware Availability: Feb-2024

Tested by: Lenovo Global Technology

Software Availability: Apr-2026

Base Optimization Flags (Continued)

Fortran benchmarks (continued):

```
-mfpmath=sse -funroll-loops -qopt-mem-layout-trans=4
-nostandard-realloc-lhs -align array32byte -auto
-L/usr/local/tcmalloc-2.18.1/lib -ltcmalloc_minimal
```

Benchmarks using both C and C++:

```
-m64 -std=c++17 -std=c18 -Wl,-z,muldefs
-Wl,-plugin-opt=-inline-threshold=1500 -xsapphirerapids
-mprefer-vector-width=512 -O3 -ffp-model=fast -flto -mfpmath=sse
-funroll-loops -qopt-mem-layout-trans=4
-L/usr/local/tcmalloc-2.18.1/lib -ltcmalloc_minimal
```

The flags files that were used to format this result can be browsed at

<http://www.spec.org/cpu2026/results/flags/Lenovo-Platform-SPECcpu2026-Flags-V1.2-Eaglestream-AD.html>
<http://www.spec.org/cpu2026/results/flags/Intel-ic2026-official-linux64-v1.1.html>

You can also download the XML flags sources by saving the following links:

<http://www.spec.org/cpu2026/results/flags/Lenovo-Platform-SPECcpu2026-Flags-V1.2-Eaglestream-AD.xml>
<http://www.spec.org/cpu2026/results/flags/Intel-ic2026-official-linux64-v1.1.xml>

SPEC CPU and SPECrate are registered trademarks of the Standard Performance Evaluation Corporation. All other brand and product names appearing in this result are trademarks or registered trademarks of their respective holders.

For questions about this result, please contact the tester. For other inquiries, please contact info@spec.org.

Tested with SPEC CPU®2026 v1.0.1 on 2026-05-27 08:51:00-0400.

Report generated on 2026-06-16 17:18:51 by CPU2026 PDF formatter (unknown).

Originally published on 2026-06-16.