



# SPEC CPU®2026 Floating Point Rate Result

Copyright 2026 Standard Performance Evaluation Corporation

**Fsas Technologies Inc.**

(Test Sponsor: Fujitsu)

**PRIMERGY RX1330 M6,  
Intel Xeon 6369P, 3.3 GHz**

**SPECrate®2026\_fp\_base = 49.5**

**SPECrate®2026\_fp\_peak = Not Run**

**CPU2026 License:** 19

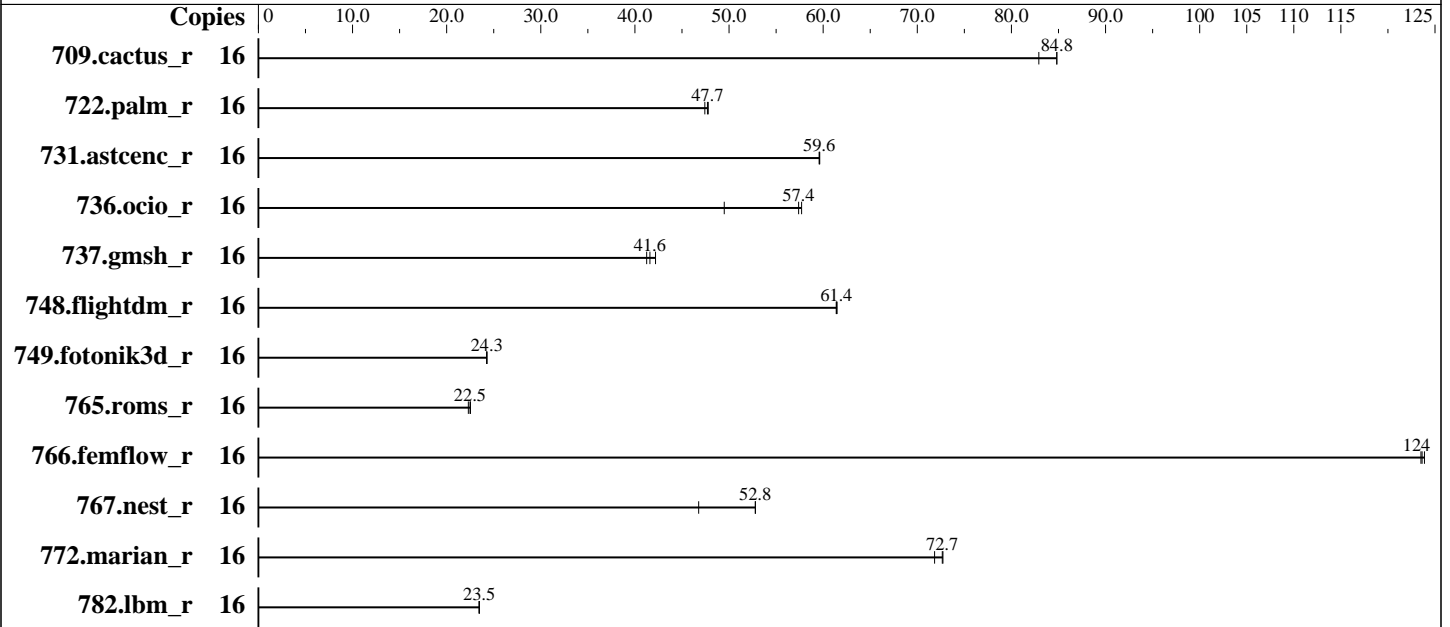
**Test Sponsor:** Fujitsu

**Tested by:** Fsas Technologies Inc.

**Test Date:** May-2026

**Hardware Availability:** Apr-2025

**Software Availability:** Apr-2026



## Hardware

CPU Name: Xeon 6369P  
 Max MHz: 5700  
 Nominal: 3300  
 Enabled: 8 cores, 1 chip, 2 threads/core  
 Orderable: 1 chip  
 Cache L1: 32 KB I + 48 KB D on chip per core  
 L2: 2 MB I+D on chip per core  
 L3: 24 MB I+D on chip per chip  
 Other: None  
 Memory: 64 GB (2 x 32 GB 2Rx8 PC5-4800B-E, running at 4400)  
 Storage: 1 x SATA M.2 SSD, 960 GB  
 Cooling: Air  
 Other: None

## Software

OS: SUSE Linux Enterprise Server 15 SP6  
 6.4.0-150600.21-default  
 Compiler: C/C++: Version 2026.0 of Intel oneAPI DPC++/C++ Compiler for Linux;  
 Fortran: Version 2026.0 of Intel Fortran Compiler for Linux  
 Compiler Category: Vendor  
 Firmware: Fujitsu BIOS Version V5.0.0.32 R2.6.0 for D4133-A1x. Released Jun-2026  
 File System: xfs  
 System State: Run level 3 (multi-user)  
 Base Pointers: 64-bit  
 Peak Pointers: Not Applicable  
 Other: jemalloc memory allocator v5.3  
 Power Management: BIOS set to prefer performance at the cost of additional power usage



# SPEC CPU®2026 Floating Point Rate Result

Copyright 2026 Standard Performance Evaluation Corporation

Fsas Technologies Inc.

(Test Sponsor: Fujitsu)

PRIMERGY RX1330 M6,  
Intel Xeon 6369P, 3.3 GHz

SPECrate®2026\_fp\_base = 49.5

SPECrate®2026\_fp\_peak = Not Run

CPU2026 License: 19

Test Sponsor: Fujitsu

Tested by: Fsas Technologies Inc.

Test Date: May-2026

Hardware Availability: Apr-2025

Software Availability: Apr-2026

## Results Table

Benchmark	Base							Peak						
	Copies	Seconds	Ratio	Seconds	Ratio	Seconds	Ratio	Copies	Seconds	Ratio	Seconds	Ratio	Seconds	Ratio
709.cactus_r	16	<b>162</b>	<b>84.8</b>	162	84.8	166	82.9							
722.palm_r	16	<b>443</b>	<b>47.7</b>	445	47.4	442	47.8							
731.ascenc_r	16	<b>226</b>	<b>59.6</b>	225	59.6	226	59.6							
736.ocio_r	16	283	49.5	243	57.7	<b>244</b>	<b>57.4</b>							
737.gmsh_r	16	174	42.2	<b>177</b>	<b>41.6</b>	178	41.2							
748.flightdm_r	16	<b>187</b>	<b>61.4</b>	186	61.5	187	61.4							
749.fotonik3d_r	16	762	24.3	763	24.3	<b>762</b>	<b>24.3</b>							
765.roms_r	16	1130	22.3	<b>1121</b>	<b>22.5</b>	1119	22.5							
766.femflow_r	16	190	124	189	124	<b>190</b>	<b>124</b>							
767.nest_r	16	271	46.8	<b>240</b>	<b>52.8</b>	240	52.8							
772.marian_r	16	347	72.7	352	71.8	<b>348</b>	<b>72.7</b>							
782.lbm_r	16	391	23.5	391	23.5	<b>391</b>	<b>23.5</b>							

SPECrate®2026\_fp\_base = 49.5

SPECrate®2026\_fp\_peak = Not Run

Results appear in the order in which they were run. Bold underlined text indicates a median measurement.

## Submit Notes

The taskset mechanism was used to bind copies to processors. The config file option 'submit' was used to generate taskset commands to bind each copy to a specific processor. For details, please see the config file.

## Operating System Notes

Stack size set to unlimited using "ulimit -s unlimited"

## Environment Variables Notes

Environment variables set by runcpu before the start of the run:

LD\_LIBRARY\_PATH = "/home/benchmark/cpu2026/lib"

MALLOC\_CONF = "retain:true"

## General Notes

Binaries compiled on a system with 2x Intel Xeon Platinum 8280M CPU + 384GB RAM memory using CentOS Stream 9.

Transparent Huge Pages enabled by default

Prior to runcpu invocation

Filesystem page cache synced and cleared with:

```
sync; echo 3> /proc/sys/vm/drop_caches
```

(Continued on next page)



# SPEC CPU®2026 Floating Point Rate Result

Copyright 2026 Standard Performance Evaluation Corporation

**Fsas Technologies Inc.**

(Test Sponsor: Fujitsu)

**PRIMERGY RX1330 M6,  
Intel Xeon 6369P, 3.3 GHz**

SPECrate®2026\_fp\_base = 49.5

SPECrate®2026\_fp\_peak = Not Run

**CPU2026 License:** 19

**Test Sponsor:** Fujitsu

**Tested by:** Fsas Technologies Inc.

**Test Date:** May-2026

**Hardware Availability:** Apr-2025

**Software Availability:** Apr-2026

## General Notes (Continued)

jemalloc, a general purpose malloc implementation  
built with the CentOS Stream 9, and the system compiler gcc 11.5.0  
sources available from jemalloc.net or <https://github.com/jemalloc/jemalloc/releases>

## Platform Notes

BIOS Settings:

Fan Control = Full

Total Memory Encryption = Disabled

Sysinfo program /home/benchmark/cpu2026/bin/sysinfo

Rev: 779ab21020787073335a329f3a45e2cd

running on localhost Thu May 28 02:26:37 2026

SUT (System Under Test) info as seen by some common utilities.

-----  
Table of contents  
-----

1. uname -srvm
2. w
3. Username
4. ulimit -a
5. sysinfo process ancestry
6. /proc/cpuinfo
7. lscpu
8. numactl --hardware
9. /proc/meminfo
10. who -r
11. Systemd service manager version: systemd 254 (254.10+suse.84.ge8d77af424)
12. Services, from systemctl list-unit-files
13. Linux kernel boot-time arguments, from /proc/cmdline
14. cpupower frequency-info
15. sysctl
16. /sys/kernel/mm/transparent\_hugepage
17. /sys/kernel/mm/transparent\_hugepage/khugepaged
18. OS release
19. Disk information
20. /sys/devices/virtual/dmi/id
21. dmidecode
22. BIOS

-----  
1. uname -srvm  
Linux 6.4.0-150600.21-default #1 SMP PREEMPT\_DYNAMIC Thu May 16 11:09:22 UTC 2024 (36c1e09) x86\_64

(Continued on next page)



# SPEC CPU®2026 Floating Point Rate Result

Copyright 2026 Standard Performance Evaluation Corporation

**Fsas Technologies Inc.**

(Test Sponsor: Fujitsu)

**PRIMERGY RX1330 M6,  
Intel Xeon 6369P, 3.3 GHz**

**SPECrate®2026\_fp\_base = 49.5**

**SPECrate®2026\_fp\_peak = Not Run**

**CPU2026 License:** 19

**Test Sponsor:** Fujitsu

**Tested by:** Fsas Technologies Inc.

**Test Date:** May-2026

**Hardware Availability:** Apr-2025

**Software Availability:** Apr-2026

## Platform Notes (Continued)

2. w

```

02:26:37 up 9:06, 2 users, load average: 4.29, 12.18, 14.46
USER      TTY      FROM          LOGIN@      IDLE        JCPU      PCPU      WHAT
root      tty1    -              17:23      9:01m      1.03s    0.13s    -bash
root      pts/0   192.168.10.106 17:24      9:01m      0.04s    0.04s    -bash

```

3. Username

From environment variable \$USER: root

4. ulimit -a

```

core file size          (blocks, -c) unlimited
data seg size           (kbytes, -d) unlimited
scheduling priority     (-e) 0
file size               (blocks, -f) unlimited
pending signals         (-i) 254378
max locked memory       (kbytes, -l) 8192
max memory size         (kbytes, -m) unlimited
open files              (-n) 1024
pipe size               (512 bytes, -p) 8
POSIX message queues    (bytes, -q) 819200
real-time priority      (-r) 0
stack size              (kbytes, -s) unlimited
cpu time                (seconds, -t) unlimited
max user processes      (-u) 254378
virtual memory          (kbytes, -v) unlimited
file locks              (-x) unlimited

```

5. sysinfo process ancestry

```

/usr/lib/systemd/systemd --switched-root --system --deserialize=42
login -- root
-bash
-bash
runcpu --nobuild --action validate --define default-platform-flags --copies 16 -c
ic2026.0-core-avx2-cpu2026-1.0.1-rate-20260429.cfg --define smt-on --define cores=8 --define
physicallogical --define no-numa --tune base -o all --define drop_caches -n 3 fprate
runcpu --nobuild --action validate --define default-platform-flags --copies 16 --configfile
ic2026.0-core-avx2-cpu2026-1.0.1-rate-20260429.cfg --define smt-on --define cores=8 --define
physicallogical --define no-numa --tune base --output_format all --define drop_caches --iterations 3
--nopower --runmode rate --tune base --size refrate fprate --nopreenv --note-preenv --logfile
$SPEC/tmp/CPU2026.001/templogs/preenv.fprate.001.0.log --lognum 001.0 --from_runcpu 2
specperl $SPEC/bin/sysinfo
$SPEC = /home/benchmark/cpu2026

```

(Continued on next page)



# SPEC CPU®2026 Floating Point Rate Result

Copyright 2026 Standard Performance Evaluation Corporation

**Fsas Technologies Inc.**

(Test Sponsor: Fujitsu)

**PRIMERGY RX1330 M6,  
Intel Xeon 6369P, 3.3 GHz**

**SPECrate®2026\_fp\_base = 49.5**

**SPECrate®2026\_fp\_peak = Not Run**

**CPU2026 License:** 19

**Test Sponsor:** Fujitsu

**Tested by:** Fsas Technologies Inc.

**Test Date:** May-2026

**Hardware Availability:** Apr-2025

**Software Availability:** Apr-2026

## Platform Notes (Continued)

```

-----
6. /proc/cpuinfo
   model name      : Intel(R) Xeon(R) 6369P
   vendor_id       : GenuineIntel
   cpu family      : 6
   model           : 183
   stepping        : 1
   microcode       : 0x133
   bugs            : spectre_v1 spectre_v2 spec_store_bypass swapgs eibrs_pbrsb bhi
   cpu cores       : 8
   siblings        : 16
   1 physical ids (chips)
   16 processors (hardware threads)
   physical id 0: core ids 0-7
   physical id 0: apicids 0-15

```

Caution: /proc/cpuinfo data regarding chips, cores, and threads is not necessarily reliable, especially for virtualized systems. Use the above data carefully.

7. lscpu

From lscpu from util-linux 2.39.3:

```

Architecture:          x86_64
CPU op-mode(s):        32-bit, 64-bit
Address sizes:         46 bits physical, 48 bits virtual
Byte Order:            Little Endian
CPU(s):                16
On-line CPU(s) list:   0-15
Vendor ID:             GenuineIntel
BIOS Vendor ID:       Intel(R) Corporation
Model name:            Intel(R) Xeon(R) 6369P
BIOS Model name:       Intel(R) Xeon(R) 6369P   CPU @ 5.2GHz
BIOS CPU family:       179
CPU family:            6
Model:                 183
Thread(s) per core:    2
Core(s) per socket:    8
Socket(s):             1
Stepping:              1
CPU(s) scaling MHz:    36%
CPU max MHz:           5700.0000
CPU min MHz:           800.0000
BogoMIPS:              6604.80

```

```

Flags:                  fpu vme de pse tsc msr pae mce cx8 apic sep mtrr pge mca cmov pat
                        pse36 clflush dts acpi mmx fxsr sse sse2 ss ht tm pbe syscall nx
                        pdpe1gb rdtscp lm constant_tsc art arch_perfmon pebs bts rep_good

```

(Continued on next page)



# SPEC CPU®2026 Floating Point Rate Result

Copyright 2026 Standard Performance Evaluation Corporation

**Fsas Technologies Inc.**

(Test Sponsor: Fujitsu)

**PRIMERGY RX1330 M6,  
Intel Xeon 6369P, 3.3 GHz**

**SPECrate®2026\_fp\_base = 49.5**

**SPECrate®2026\_fp\_peak = Not Run**

**CPU2026 License:** 19

**Test Sponsor:** Fujitsu

**Tested by:** Fsas Technologies Inc.

**Test Date:** May-2026

**Hardware Availability:** Apr-2025

**Software Availability:** Apr-2026

## Platform Notes (Continued)

```

nopl xtopology nonstop_tsc cpuid aperfmperf tsc_known_freq pni
pclmulqdq dtes64 monitor ds_cpl vmx smx est tm2 ssse3 sdbg fma cx16
xtpr pdc_m sse4_1 sse4_2 x2apic movbe popcnt tsc_deadline_timer aes
xsave avx f16c rdrand lahf_lm abm 3dnowprefetch cpuid_fault epb ssbd
ibrs ibpb stibp ibrs_enhanced tpr_shadow flexpriority ept vpid ept_ad
fsgsbase tsc_adjust bmi1 avx2 smep bmi2 erms invpcid rdseed adx smap
clflushopt clwb intel_pt sha_ni xsaveopt xsavec xgetbv1 xsaves
split_lock_detect user_shstk avx_vnni dtherm ida arat pln pts hwp
hwp_notify hwp_act_window hwp_epp hwp_pkg_req hfi vnmi umip pku ospke
waitpkg gfni vaes vpclmulqdq tme rdpid movdiri movdir64b fsrm
md_clear serialize pconfig arch_lbr ibt flush_l1d arch_capabilities

```

```

Virtualization: VT-x
L1d cache: 384 KiB (8 instances)
L1i cache: 256 KiB (8 instances)
L2 cache: 16 MiB (8 instances)
L3 cache: 24 MiB (1 instance)
NUMA node(s): 1
NUMA node0 CPU(s): 0-15
Vulnerability Gather data sampling: Not affected
Vulnerability Itlb multihit: Not affected
Vulnerability L1tf: Not affected
Vulnerability Mds: Not affected
Vulnerability Meltdown: Not affected
Vulnerability Mmio stale data: Not affected
Vulnerability Reg file data sampling: Not affected
Vulnerability Retbleed: Not affected
Vulnerability Spec rstack overflow: Not affected
Vulnerability Spec store bypass: Mitigation; Speculative Store Bypass disabled via prctl
Vulnerability Spectre v1: Mitigation; usercopy/swaps barriers and __user pointer sanitization
Vulnerability Spectre v2: Mitigation; Enhanced / Automatic IBRS; IBPB conditional; RSB filling;
PBR SB-eIBRS SW sequence; BHI BHI_DIS_S
Vulnerability Srbds: Not affected
Vulnerability Tsx async abort: Not affected

```

From `lscpu --cache:`

NAME	ONE-SIZE	ALL-SIZE	WAYS	TYPE	LEVEL	SETS	PHY-LINE	COHERENCY-SIZE
L1d	48K	384K	12	Data	1	64	1	64
L1i	32K	256K	8	Instruction	1	64	1	64
L2	2M	16M	16	Unified	2	2048	1	64
L3	24M	24M	12	Unified	3	32768	1	64

8. `numactl --hardware`

NOTE: a `numactl 'node'` might or might not correspond to a physical chip.

```

available: 1 nodes (0)
node 0 cpus: 0-15
node 0 size: 63620 MB

```

(Continued on next page)



# SPEC CPU®2026 Floating Point Rate Result

Copyright 2026 Standard Performance Evaluation Corporation

**Fsas Technologies Inc.**

(Test Sponsor: Fujitsu)

**PRIMERGY RX1330 M6,  
Intel Xeon 6369P, 3.3 GHz**

**SPECrate®2026\_fp\_base = 49.5**

**SPECrate®2026\_fp\_peak = Not Run**

**CPU2026 License:** 19

**Test Sponsor:** Fujitsu

**Tested by:** Fsas Technologies Inc.

**Test Date:** May-2026

**Hardware Availability:** Apr-2025

**Software Availability:** Apr-2026

## Platform Notes (Continued)

```
node 0 free: 62849 MB
node distances:
node 0
0: 10
```

```
-----
9. /proc/meminfo
MemTotal: 65147472 kB
```

```
-----
10. who -r
run-level 3 May 27 17:20
```

```
-----
11. Systemd service manager version: systemd 254 (254.10+suse.84.ge8d77af424)
Default Target Status
multi-user running
```

```
-----
12. Services, from systemctl list-unit-files
STATE UNIT FILES
enabled apparmor auditd cron getty@ irqbalance issue-generator kbdsettings lvm2-monitor postfix
purge-kernels rollback sep5 sshd systemd-pstore wicked wickedd-auto4 wickedd-dhcp4
wickedd-dhcp6 wickedd-nanny
enabled-runtime systemd-remount-fs
disabled YaST2-Firstboot YaST2-Second-Stage autofsd autoyast-initscripts blk-availability
boot-sysctl ca-certificates chrony-wait chronyd console-getty cups cups-browsed
debug-shell display-manager ebttables exchange-bmc-os-info firewallld fsidd gpm grub2-once
haveged ipmi ipmievld issue-add-ssh-keys kdump kdump-early kdump-notify kexec-load klog
lunmask man-db-create multipathd nfs nfs-blkmap nscd rpcbind rpmconfigcheck rsyncd rsyslog
serial-getty@ smartd smartd_generate_opts snmpd snmptrapd systemd-boot-check-no-failures
systemd-confext systemd-network-generator systemd-sysextd systemd-time-wait-sync
systemd-timesyncd vncserver@
indirect systemd-userdbd wickedd
```

```
-----
13. Linux kernel boot-time arguments, from /proc/cmdline
BOOT_IMAGE=/boot/vmlinuz-6.4.0-150600.21-default
root=UUID=69cd5337-d082-4cee-8e02-ec4054c30a5a
splash=silent
resume=/dev/disk/by-uuid/a5855c9d-a4a0-4b74-baec-bd075bde416b
quiet
security=apparmor
crashkernel=347M,high
crashkernel=72M,low
mitigations=auto
```

(Continued on next page)



# SPEC CPU®2026 Floating Point Rate Result

Copyright 2026 Standard Performance Evaluation Corporation

**Fsas Technologies Inc.**

(Test Sponsor: Fujitsu)

**PRIMERGY RX1330 M6,  
Intel Xeon 6369P, 3.3 GHz**

**SPECrate®2026\_fp\_base = 49.5**

**SPECrate®2026\_fp\_peak = Not Run**

**CPU2026 License:** 19

**Test Sponsor:** Fujitsu

**Tested by:** Fsas Technologies Inc.

**Test Date:** May-2026

**Hardware Availability:** Apr-2025

**Software Availability:** Apr-2026

## Platform Notes (Continued)

### 14. cpupower frequency-info

analyzing CPU 6:

current policy: frequency should be within 800 MHz and 5.50 GHz.

The governor "powersave" may decide which speed to use within this range.

boost state support:

Supported: yes

Active: yes

### 15. sysctl

```

kernel.numa_balancing          0
kernel.randomize_va_space     2
vm.compaction_proactiveness    20
vm.dirty_background_bytes      0
vm.dirty_background_ratio      10
vm.dirty_bytes                 0
vm.dirty_expire_centisecs     3000
vm.dirty_ratio                 20
vm.dirty_writeback_centisecs   500
vm.dirtytime_expire_seconds    43200
vm.extfrag_threshold           500
vm.min_unmapped_ratio          1
vm.nr_hugepages                0
vm.nr_hugepages_mempolicy      0
vm.nr_overcommit_hugepages     0
vm.swappiness                   60
vm.watermark_boost_factor      15000
vm.watermark_scale_factor      10
vm.zone_reclaim_mode           0

```

### 16. /sys/kernel/mm/transparent\_hugepage

```

defrag          always defer defer+madvise [madvise] never
enabled         [always] madvise never
hpage_pmd_size 2097152
shmem_enabled   always within_size advise [never] deny force

```

### 17. /sys/kernel/mm/transparent\_hugepage/khugepaged

```

alloc_sleep_millisecs  60000
defrag                  1
max_ptes_none           511
max_ptes_shared         256
max_ptes_swap           64
pages_to_scan           4096

```

(Continued on next page)



# SPEC CPU®2026 Floating Point Rate Result

Copyright 2026 Standard Performance Evaluation Corporation

**Fsas Technologies Inc.**

(Test Sponsor: Fujitsu)

**PRIMERGY RX1330 M6,  
Intel Xeon 6369P, 3.3 GHz**

SPECrate®2026\_fp\_base = 49.5

SPECrate®2026\_fp\_peak = Not Run

**CPU2026 License:** 19

**Test Sponsor:** Fujitsu

**Tested by:** Fsas Technologies Inc.

**Test Date:** May-2026

**Hardware Availability:** Apr-2025

**Software Availability:** Apr-2026

## Platform Notes (Continued)

scan\_sleep\_millisecs 10000

### 18. OS release

From /etc/\*-release /etc/\*-version

os-release SUSE Linux Enterprise Server 15 SP6

### 19. Disk information

SPEC is set to: /home/benchmark/cpu2026

Filesystem	Type	Size	Used	Avail	Use%	Mounted on
/dev/sda5	xfs	751G	71G	681G	10%	/home

### 20. /sys/devices/virtual/dmi/id

Vendor: FUJITSU  
 Product: PRIMERGY RX1330 M6  
 Product Family: SERVER  
 Serial: xxxxxxxxxxxx

### 21. dmidecode

Additional information from dmidecode 3.4 follows. WARNING: Use caution when you interpret this section. The 'dmidecode' program reads system data which is "intended to allow hardware to be accurately determined", but the intent may not be met, as there are frequent changes to hardware, firmware, and the "DMTF SMBIOS" standard.

Memory:

2x Samsung M324R4GA3BB0-CQKOL 32 GB 2 rank 4800, configured at 4400

### 22. BIOS

(This section combines info from /sys/devices and dmidecode.)

BIOS Vendor: FUJITSU // American Megatrends International, LLC.  
 BIOS Version: V5.0.0.32 R2.6.0 for D4133-Alx  
 BIOS Date: 04/23/2026  
 BIOS Revision: 2.6

## Compiler Version Notes

C | 782.lbm\_r(base)

Intel(R) oneAPI DPC++/C++ Compiler for applications running on Intel(R) 64,  
Version 2026.0.0 Build 20260331  
Copyright (C) 1985-2026 Intel Corporation. All rights reserved.

(Continued on next page)



# SPEC CPU®2026 Floating Point Rate Result

Copyright 2026 Standard Performance Evaluation Corporation

**Fsas Technologies Inc.**

(Test Sponsor: Fujitsu)

**PRIMERGY RX1330 M6,  
Intel Xeon 6369P, 3.3 GHz**

**SPECrate®2026\_fp\_base = 49.5**

**SPECrate®2026\_fp\_peak = Not Run**

**CPU2026 License:** 19

**Test Sponsor:** Fujitsu

**Tested by:** Fsas Technologies Inc.

**Test Date:** May-2026

**Hardware Availability:** Apr-2025

**Software Availability:** Apr-2026

## Compiler Version Notes (Continued)

```

=====
C++      | 731.astcenc_r(base) 736.ocio_r(base) 748.flightdm_r(base)
         | 766.femflow_r(base) 767.nest_r(base) 772.marian_r(base)
=====

```

```

Intel(R) oneAPI DPC++/C++ Compiler for applications running on Intel(R) 64,
Version 2026.0.0 Build 20260331
Copyright (C) 1985-2026 Intel Corporation. All rights reserved.
=====

```

```

=====
C++, C   | 709.cactus_r(base) 737.gmsh_r(base)
=====

```

```

Intel(R) oneAPI DPC++/C++ Compiler for applications running on Intel(R) 64,
Version 2026.0.0 Build 20260331
Copyright (C) 1985-2026 Intel Corporation. All rights reserved.
=====

```

```

=====
Fortran  | 722.palm_r(base) 749.fotonik3d_r(base) 765.roms_r(base)
=====

```

```

Intel(R) Fortran Compiler for applications running on Intel(R) 64, Version
2026.0.0 Build 20260331
Copyright (C) 1985-2026 Intel Corporation. All rights reserved.
=====

```

## Base Compiler Invocation

C benchmarks:

icx

C++ benchmarks:

icpx

Fortran benchmarks:

ifx

Benchmarks using both C and C++:

icpx icx



# SPEC CPU®2026 Floating Point Rate Result

Copyright 2026 Standard Performance Evaluation Corporation

**Fsas Technologies Inc.**

(Test Sponsor: Fujitsu)

**PRIMERGY RX1330 M6,  
Intel Xeon 6369P, 3.3 GHz**

**SPECrate®2026\_fp\_base = 49.5**

**SPECrate®2026\_fp\_peak = Not Run**

**CPU2026 License:** 19

**Test Sponsor:** Fujitsu

**Tested by:** Fsas Technologies Inc.

**Test Date:** May-2026

**Hardware Availability:** Apr-2025

**Software Availability:** Apr-2026

## Base Portability Flags

737.gmsh\_r: -fno-associative-math

## Base Optimization Flags

C benchmarks:

```
-m64 -std=c18 -Wl,-z,muldefs -Wl,-plugin-opt=-inline-threshold=1500
-xCORE-AVX2 -O3 -ffp-model=fast -flto -mfpmath=sse -funroll-loops
-qopt-mem-layout-trans=4 -L/usr/local/jemalloc-5.3.0/lib -ljemalloc
```

C++ benchmarks:

```
-m64 -std=c++17 -Wl,-z,muldefs -Wl,-plugin-opt=-inline-threshold=1500
-xCORE-AVX2 -O3 -ffp-model=fast -flto -mfpmath=sse -funroll-loops
-qopt-mem-layout-trans=4 -L/usr/local/jemalloc-5.3.0/lib -ljemalloc
```

Fortran benchmarks:

```
-m64 -stand f18 -Wl,-z,muldefs -Wl,-plugin-opt=-inline-threshold=1500
-xCORE-AVX2 -O3 -ffp-model=fast -flto -mfpmath=sse -funroll-loops
-qopt-mem-layout-trans=4 -nostandard-realloc-lhs -align array32byte
-auto -L/usr/local/jemalloc-5.3.0/lib -ljemalloc
```

Benchmarks using both C and C++:

```
-m64 -std=c++17 -std=c18 -Wl,-z,muldefs
-Wl,-plugin-opt=-inline-threshold=1500 -xCORE-AVX2 -O3 -ffp-model=fast
-flto -mfpmath=sse -funroll-loops -qopt-mem-layout-trans=4
-L/usr/local/jemalloc-5.3.0/lib -ljemalloc
```

The flags files that were used to format this result can be browsed at

<http://www.spec.org/cpu2026/results/flags/Intel-ic2025-official-linux64.html>

<http://www.spec.org/cpu2026/results/flags/Fujitsu-Platform-Settings-V1.0-RPL-R-RevA.html>

You can also download the XML flags sources by saving the following links:

<http://www.spec.org/cpu2026/results/flags/Intel-ic2025-official-linux64.xml>

<http://www.spec.org/cpu2026/results/flags/Fujitsu-Platform-Settings-V1.0-RPL-R-RevA.xml>

SPEC CPU and SPECrate are registered trademarks of the Standard Performance Evaluation Corporation. All other brand and product names appearing in this result are trademarks or registered trademarks of their respective holders.

For questions about this result, please contact the tester. For other inquiries, please contact [info@spec.org](mailto:info@spec.org).

Tested with SPEC CPU®2026 v1.0.1 on 2026-05-27 13:26:36-0400.

Report generated on 2026-06-22 09:38:03 by CPU2026 PDF formatter (unknown).

Originally published on 2026-06-19.